

1. Supplementary Figures

A Fuzzy based Improved GWO clustering algorithm for predicting SARS-CoV-2 co-receptor protein

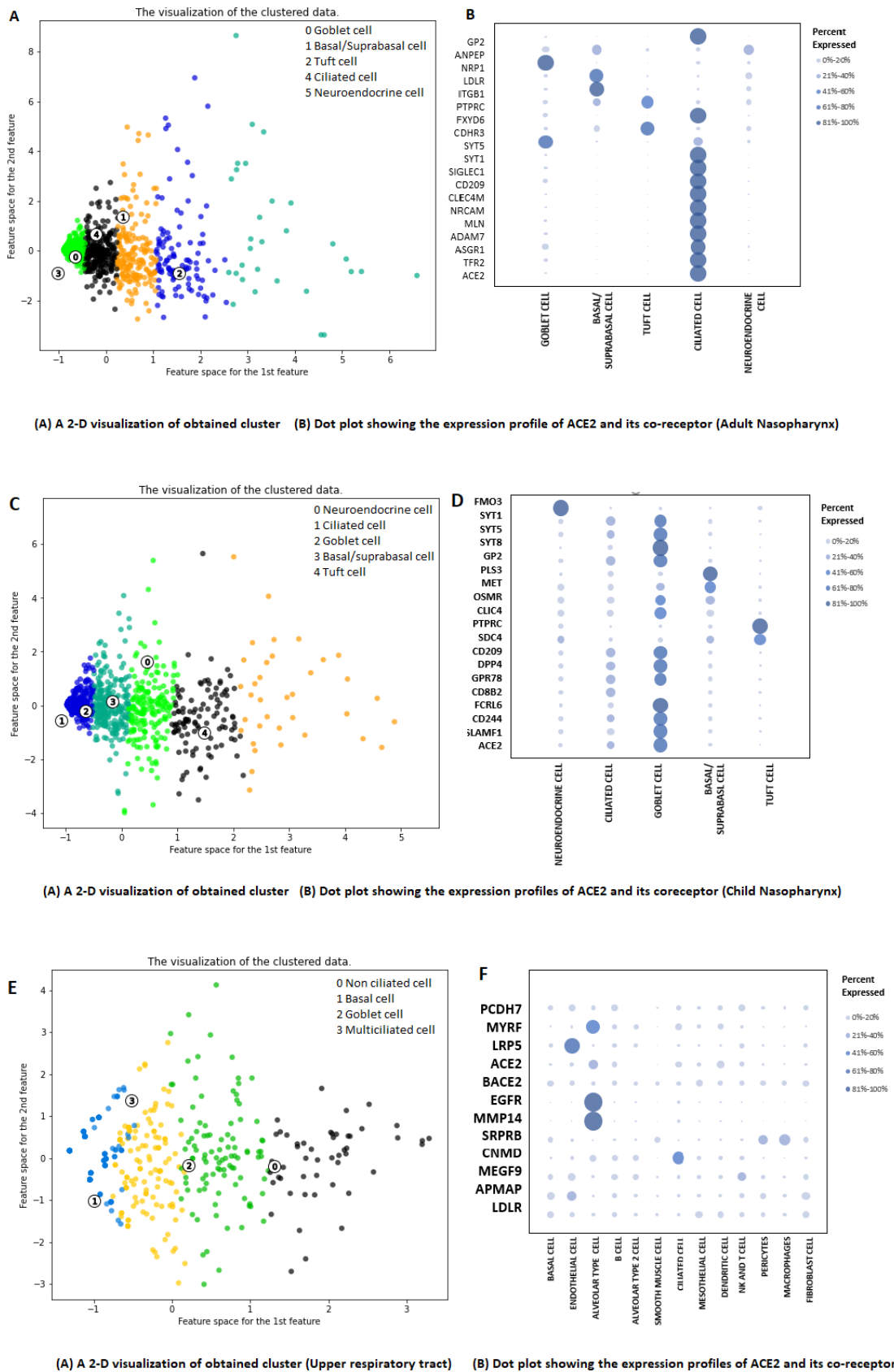


Fig. 1: Graphical visualization of clustering result obtained from the adult, child nasopharynx, upper respiratory tract and lung

A Fuzzy based Improved GWO clustering algorithm for predicting SARS-CoV-2 co-receptor protein

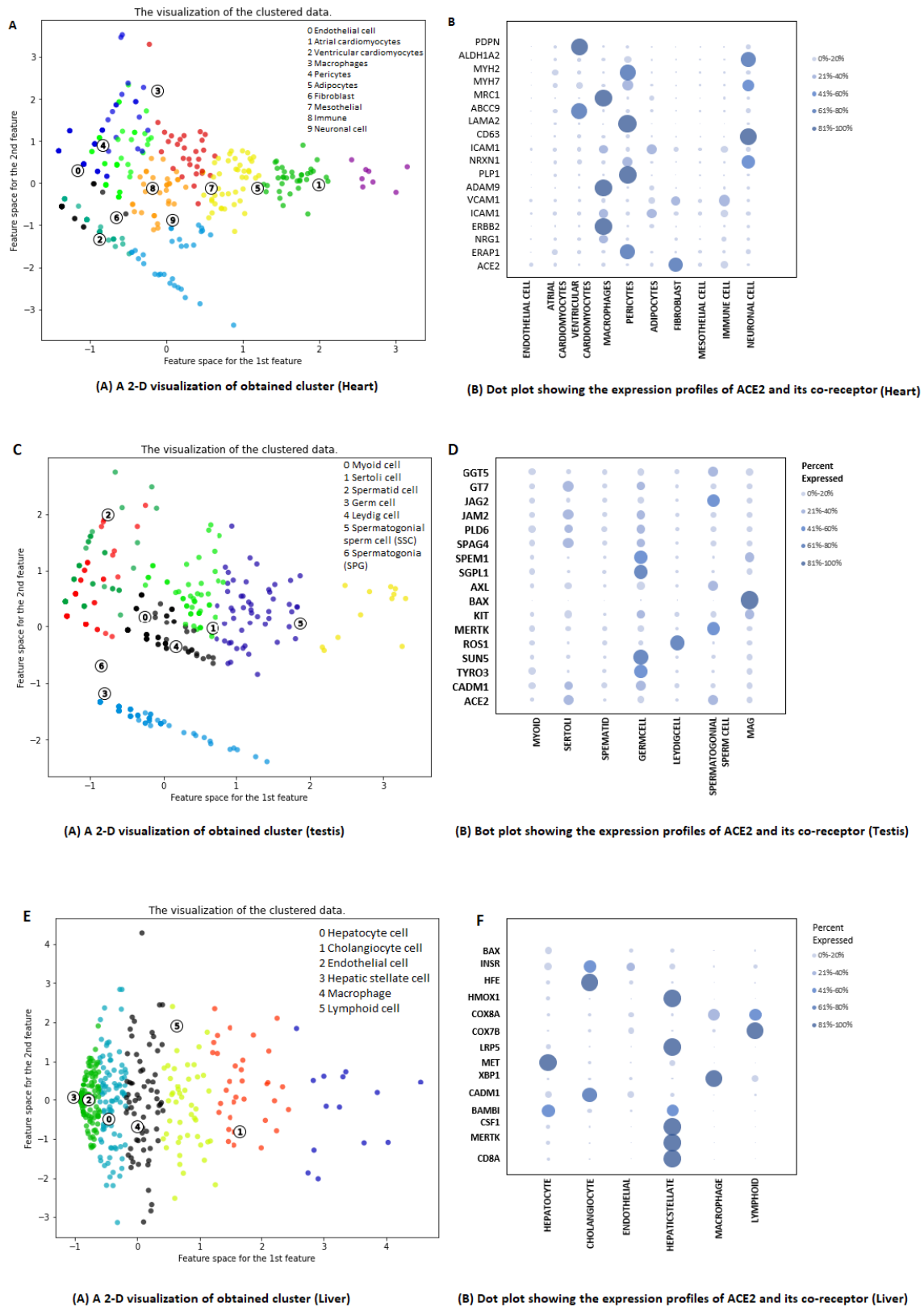


Fig. 2: Graphical visualization of clustering result obtained from the heart, testis and liver

A Fuzzy based Improved GWO clustering algorithm for predicting SARS-CoV-2 co-receptor protein

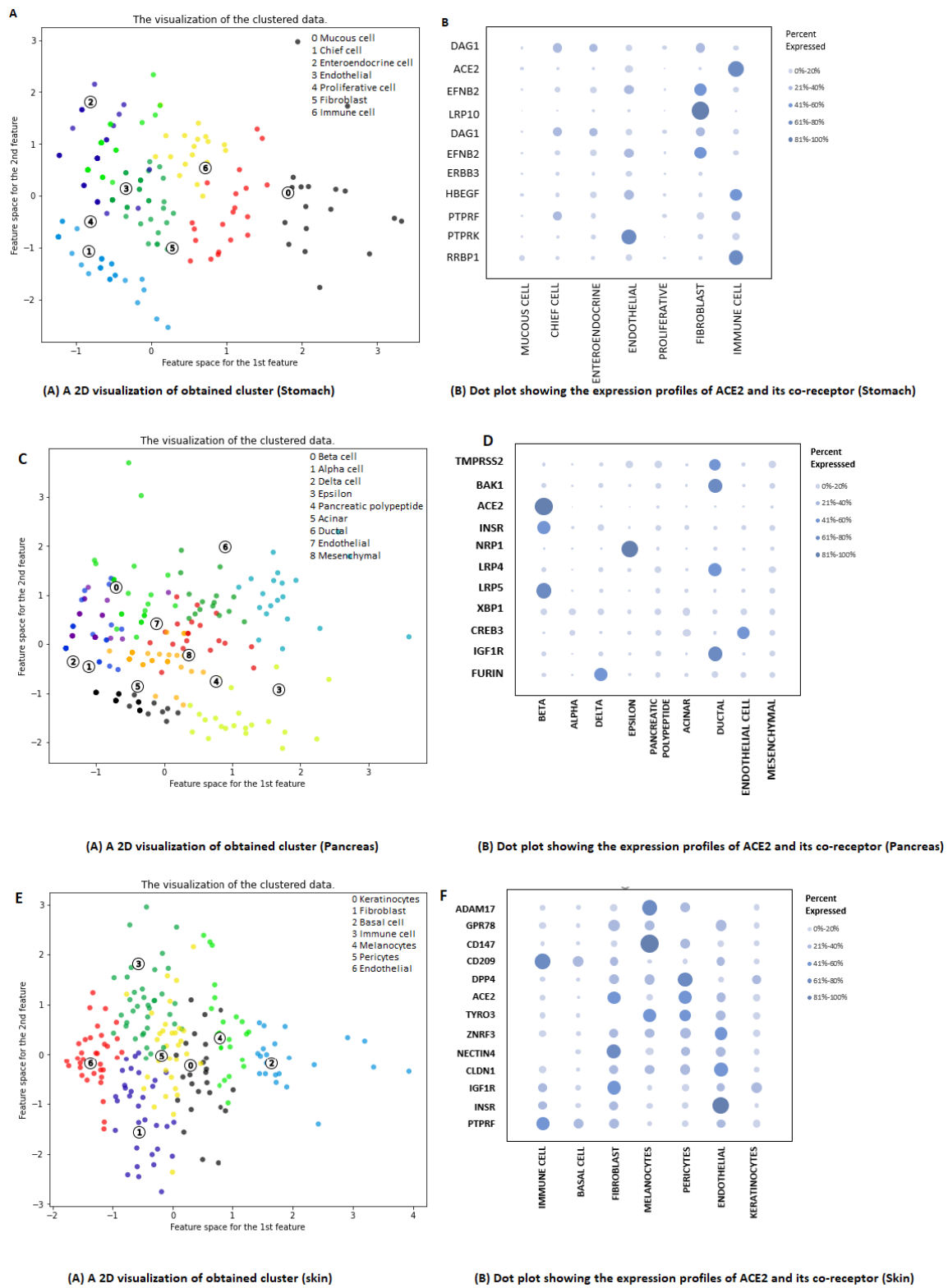


Fig. 3: Graphical visualization of clustering result obtained from stomach, pancreas and skin

A Fuzzy based Improved GWO clustering algorithm for predicting SARS-CoV-2 co-receptor protein

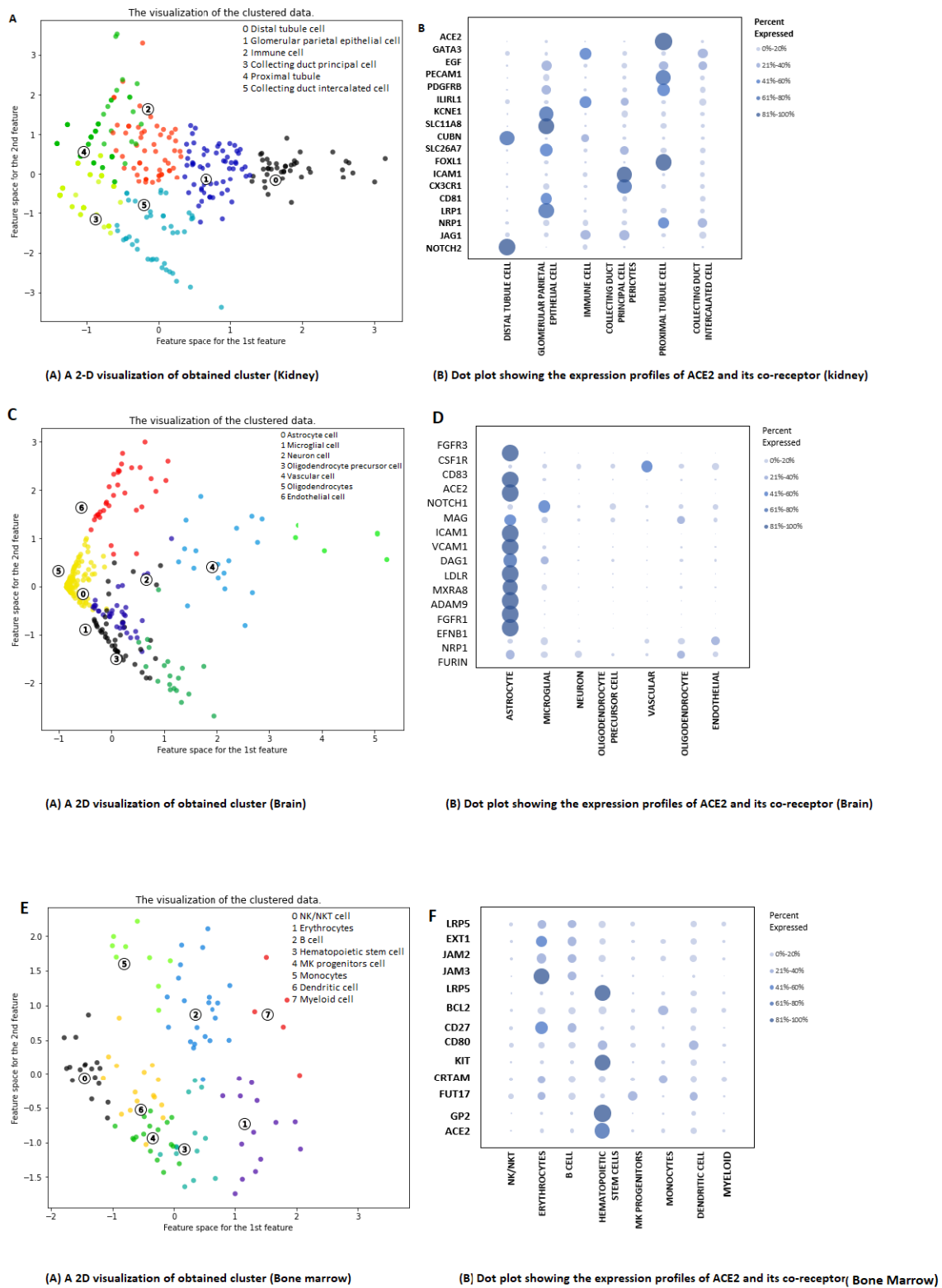


Fig. 4: Graphical visualization of clustering result obtained from kidney, brain and bonemarrow