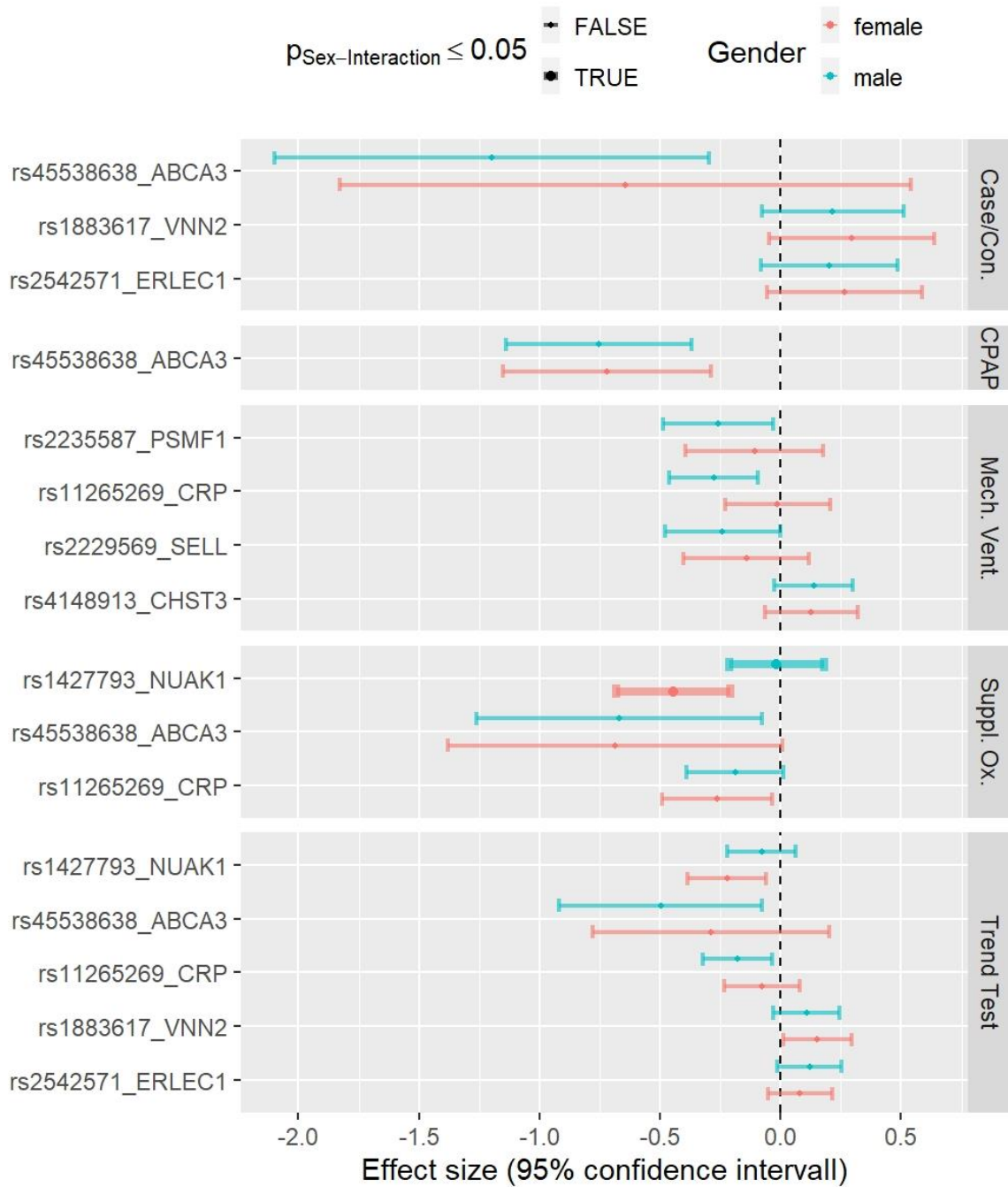


*Supplemental figure 1: Correlation between considered quantitative measures of respiratory support*

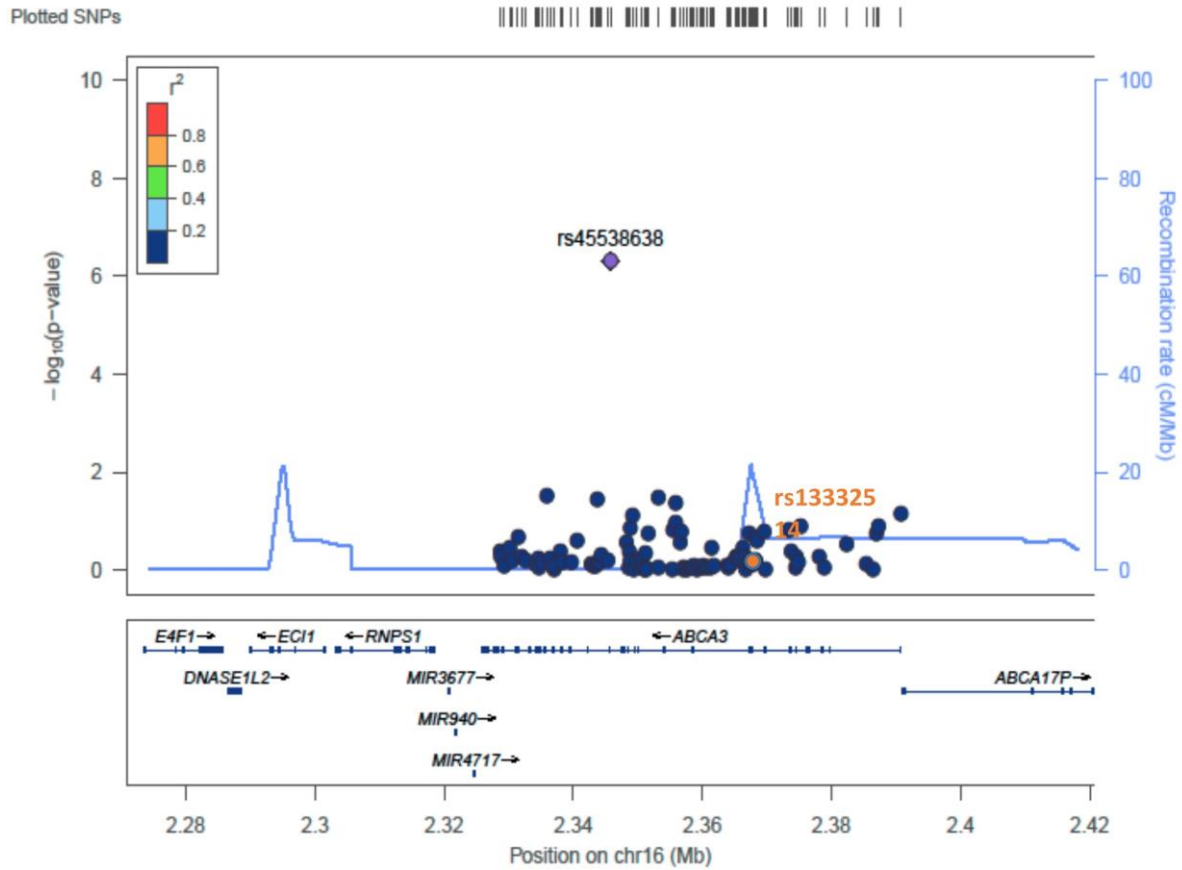
*This figure shows the correlation between each quantitative measures of respiratory support (supplemental oxygen, mechanical ventilation and CPAP). All measures are shown in days.*

*The lower triangle shows the value of the Spearman rank correlation rho.*



**Supplemental figure 2: Sex specificity of observed genetic associations**

We compared male-specific and female-specific effect sizes in an interactions test. We observed nominal significance for different effect sizes for the association of rs1427793-NUAK1 with the time of requirement of oxygen, where the effect was stronger pronounced in females ( $p$  interaction = 0.006).



**Supplemental figure 3: Regional plot for the association of ABCA3 with CPAP**

No variant in LD with rs45538638 was available in the imputation reference panel. Variant rs133325 was previously reported for association with BPD.