

Figure S4

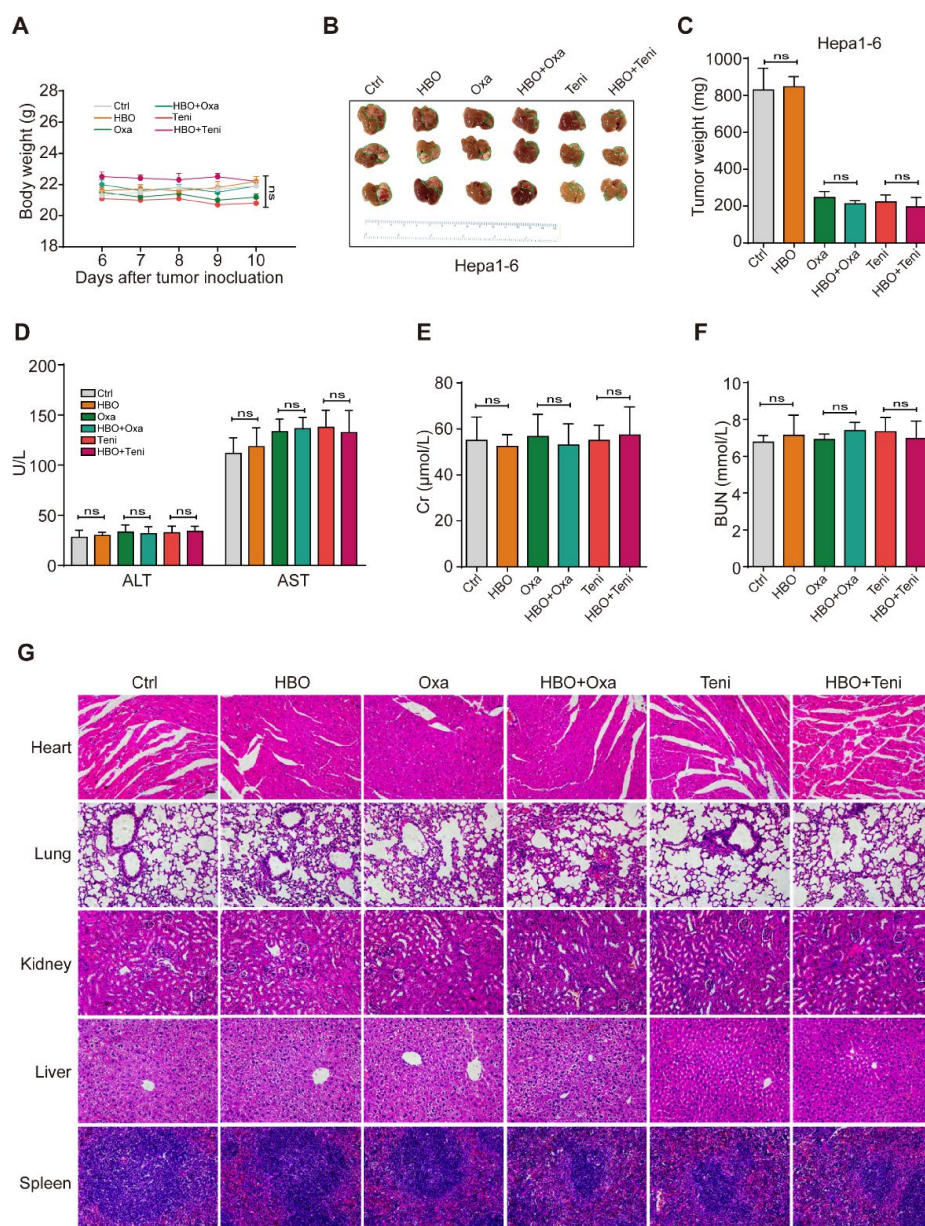


Figure S4. Safety evaluation of combined HBO therapy with oxaliplatin/teniposide chemotherapy.

(A) Body weight changes of hepatic tumor-bearing mice during the tumor microenvironment (TME) survey experiments. (B) Representative photos of Hepa1-6 tumor tissue at the end of TME survey experiments (circled by green lines). (C) Orthotopic tumors were resected from liver and weighted at the end of TME survey

experiments. **(D-F)** Serum levels of alanine transaminase (ALT), aspartate aminotransferase (AST) **(D)**, creatinine (Cr) **(E)**, and blood urea nitrogen (BUN) **(F)** in mice were measured at the end of TME survey experiments after treatments withdrawal. **(G)** H&E staining for heart, lung, kidney, liver and spleen from mice in each group at the end of TME survey experiments. Scale bar, 50 μm . *:P < 0.05, **:P < 0.01 and ***:P < 0.001. n.s. as not significant. (n=3 per group).