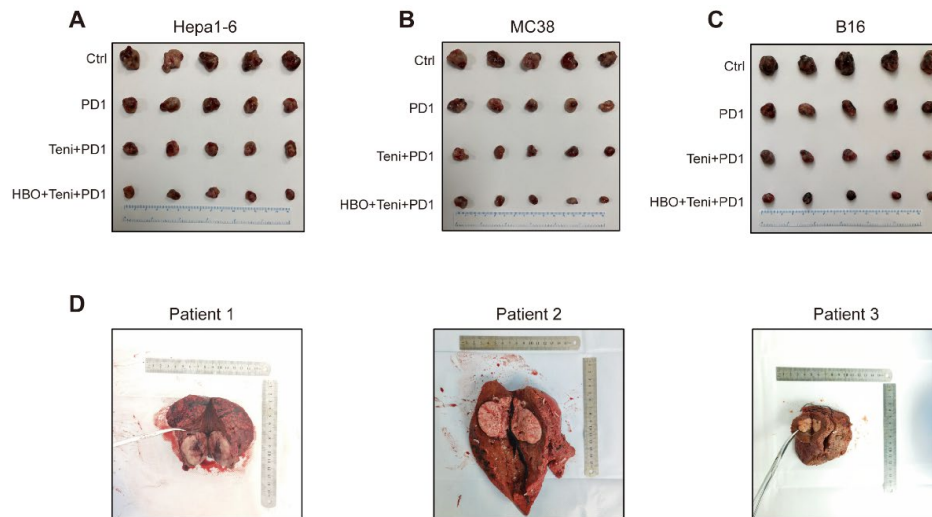


**Figure S6**

**Figure S6. Representative photos of mice subcutaneous tumor tissues and surgically resected human HCC tissues.**

(A-C) Representative photos of subcutaneous Hepa1-6 (A), MC38 (B), and B16 (C) tumor tissues at the end of anti-PD-1 sensitization experiments. (n=5 per group). (D) Clinical HCC tumor sample images of three different patients used in this study.