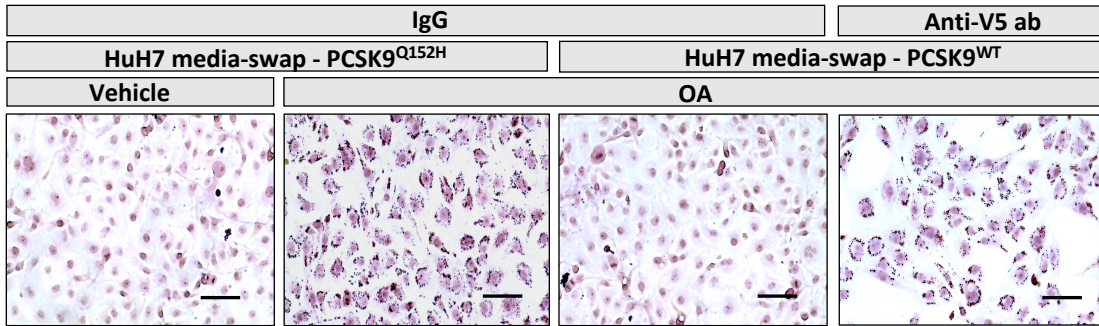
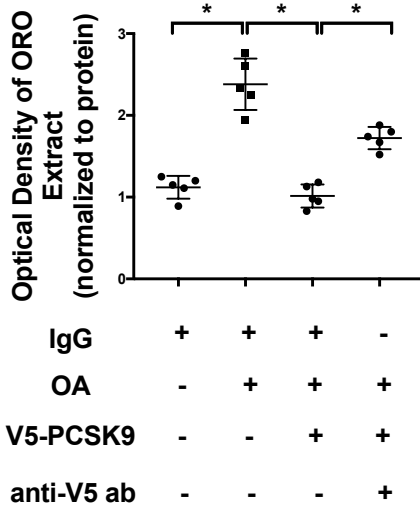


Supplementary Figure 1.

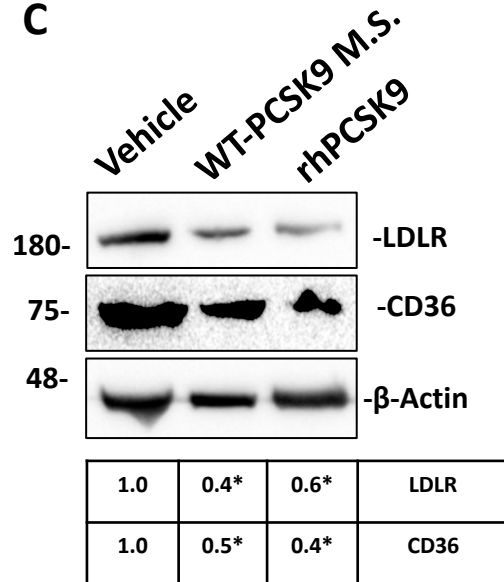
A



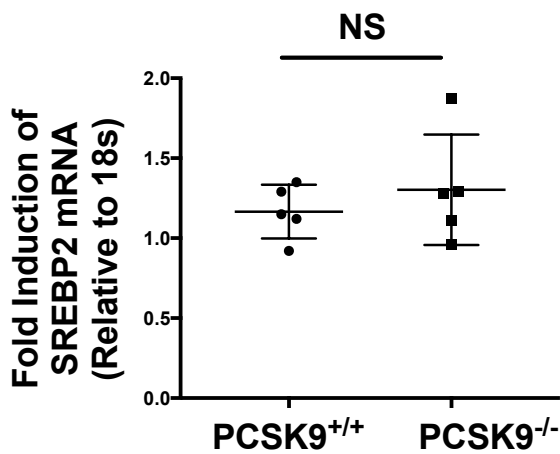
B



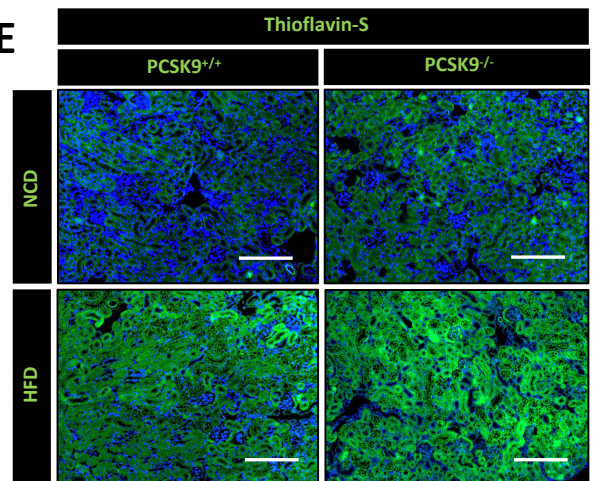
C



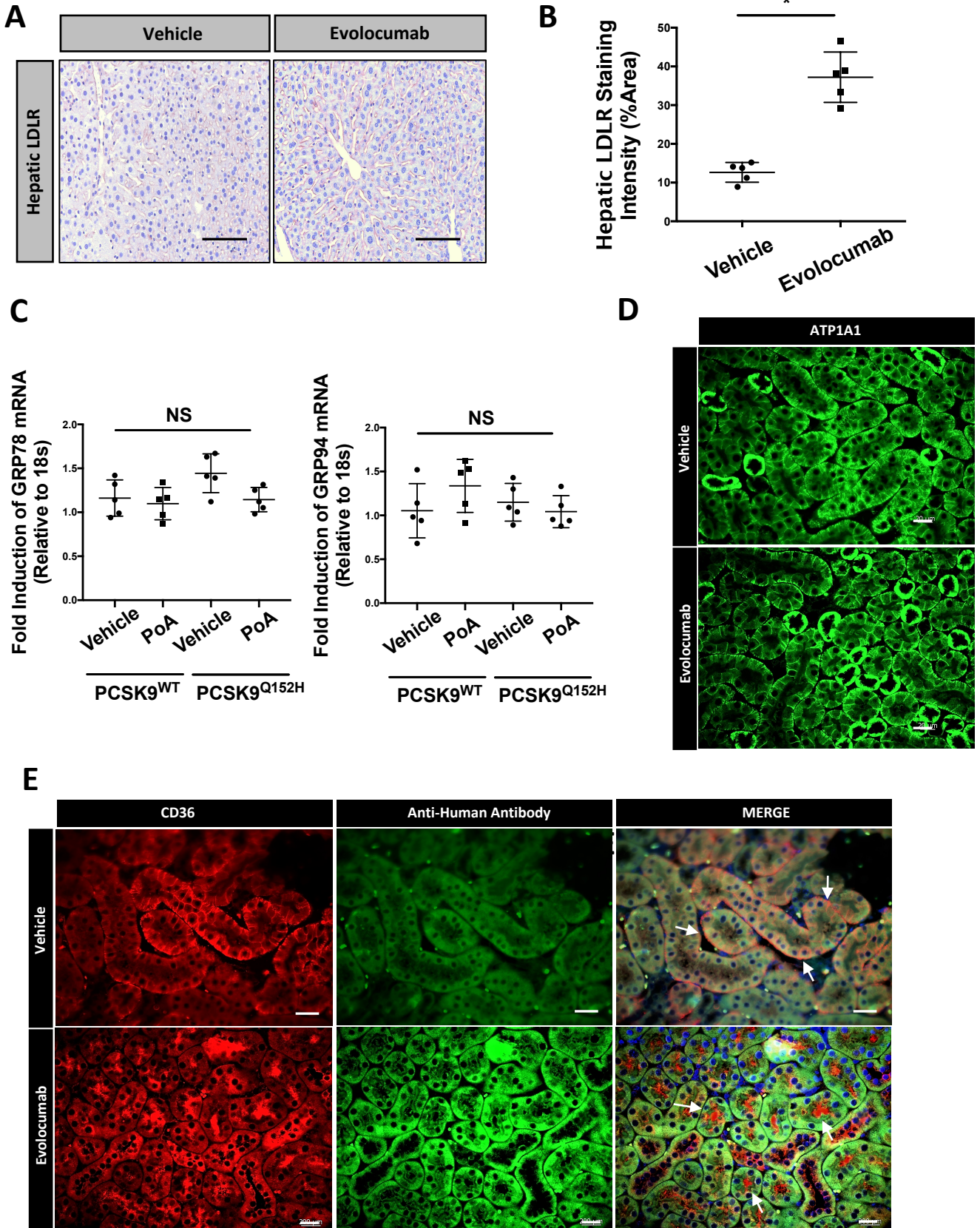
D



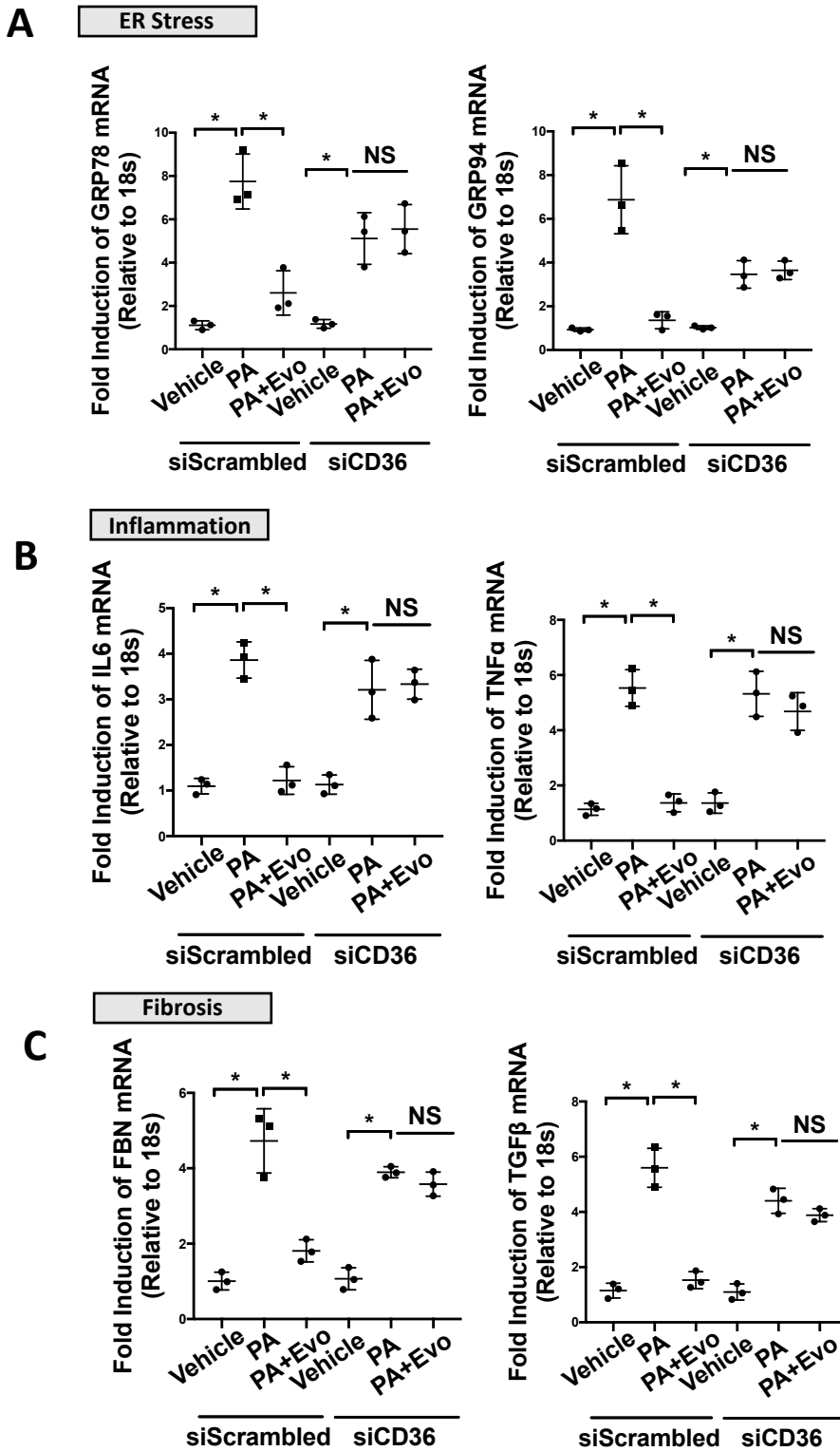
E



Supplementary Figure 2.



Supplementary Figure 3.



Supplementary Figure 4.

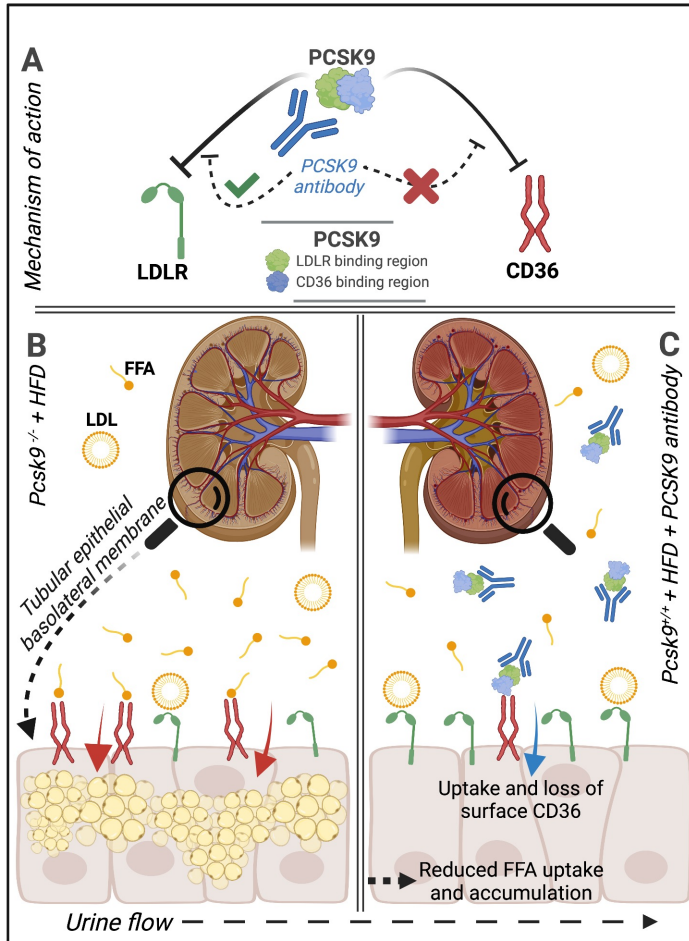


Table 1: Antibodies used for immunoblotting and immunohistochemical analysis

Antibody	Manufacturer	Application	Antibody Dilution
β -actin	Sigma-Aldrich	Immunoblot	1:5000
PCSK9	NB300-959, Novus Biologicals	Immunoblot	1:500
CD36	NB400-144, Novus Biologicals	IHC, Immunoblot	1:500, no retrieval/ 1:1000
V5	Sc-271944, Santa Cruz Biotechnology	Immunoblot	1:1000
ATF6	70B1413.1, Novus Biologicals	Immunoblot IF	1:1000
LDLR	AF2255, R&D Systems	Immunoblot	1:1000
PPAR α	Sc-398394, Santa Cruz Biotechnology	Immunoblot	1:1000
SREBP1	Ab28481, Abcam	Immunoblot	1:1000
FAS	Ab110021, Abcam	Immunoblot	1:1000
Perilipin	Ab3526, Abcam	IHC	1:100, HIER
p-PERK	Ab192591, Abcam	IHC	1:100, HIER
α -SMA	MA5-11547, Thermofisher Scientific	IHC	1:100, no retrieval
Fibronectin	Ab2413, Abcam	IHC	1:200, HIER
Anti-human Antibody	A10631, Invitrogen	IF	1:100, HIER
ATP1A1	55187-1-AP, Invitrogen	IF	1:200, HIER

Table 2: Primers used for quantitative real time PCR

Gene	Species	Forward	Reverse
GRP78	Human	CATCACGCCG TCCTATGTCG	CGTCAAAGAC CGTGTCTCG
GRP94	Human	GCTTCGGTCA GGGTATCTTT	AGGCTCTTCT TCCACCTTTG
PERK	Human	GTCCGGAACC AGACGATGAG	GGCTGGATGA CACCAAGGAA
IRE1 α	Human	GAAAAGGAA T CCCTGGATGG	TCAGAGGGCG TCTGGAGTC
SREBP2	Human	CTCCATTGACTCTGAGCCAGGA	GAATCCGTGAGCGGTCTACCAT
LDLR	Human	GAATCTACTGGTCTGACCTGTCC	GGTCCAGTAGATGTTGCTGTGG
18s	Human	GTAACCCGTTGAACCCATT	CCATCCAATCGGTAGTAGCG
ADRP	Mouse	TCTCAGGGGTGGTGATAAG	TCTACCAGCAGCTCCGACTT
DGAT1	Mouse	CTGATCCTGA GTAATGCAAG GTT	TGGATGCAAT AATCACGCAT GG
SREBP1	Mouse	GCCGGCGCCA TGGACGAGCT GGCC	CAGGAAGGCT TCCAGAGAGG AGGC
PPAR α	Mouse	GAAGGGCACA CGCGTGCGAG TTTGAG	CTGTGATGACAACGTCTTGTCCCGAACT
ACOX1	Mouse	CTCTGCTGGG CACGGTGCA	TCTACCAGCA GTCCGACTT
APOC2	Mouse	CTCTGCTGGG CACGGTGCA	GCCGCCGAGC TTTTGCTGTAC
GRP78	Mouse	GTCCTGCATC ATCAGCAAAG	GGTAGCCACA TACTGAACAC C
GRP94	Mouse	GATGGTCTGG CAACATGGAG	CGCCTTGGTG TCTGGTAGAA
IRE1 α	Mouse	TGAAACACCC CTTCTTCTG	CCTCCTTTTCT ATTCGGTCAC TT
PERK	Mouse	AAAAAGCAGT GGGG TTTGGA	CTGGAATATA CCGAAGTTCA AAG
ATF6	Mouse	GGACGAGGTG GTGTCAGAG	GACAGCTCTT CGCTTTGGAC
IL1 β	Mouse	CCTTCCAGGATGAGGACATGA	TGAGTCACAGAGGATGGGCTC
TNF α	Mouse	CATGAGCACAGAAAGCATGATCCG	AAGCAGGAATGAGAAGAGGCTGAG
FBN-1	Mouse	AGAAGAGGCGGCGGAGGACACGAT	TGCCAAGCCTTAGACAGCCAACCT
COL1A1	Mouse	GACGCCATCAAGGTCTACTG	ACGGGAATCCATCGGTCA
TGF- β	Mouse	CAACAATTCCTGGCGTTACCTTGG	GAAAGCCCTGTATTCCGTCTCCTT
CASP1	Mouse	TCCGCGTTGAATCCTTTTCAGA	ACCACAATTGCTGTGTGTGCGCA
CASP7	Mouse	GGACCGAGTGCCCACTTATC	TCGCTTTGTGCGAAGTTCTTGTT
CASP9	Mouse	AGGAGGGACGAACACGTCT	CAAAGAAGGTTGCCCAATCT
18s	Mouse	GGACCAGAGCGAAAGCATTTGCC	TCAATCTCGGGTGGCTGAACGC