

## **Crossing the blood-brain barrier with carbon dots: uptake mechanism and *in vivo* cargo delivery**

Elif S. Seven<sup>1</sup>, Yasin B. Seven<sup>2,3</sup>, Yiqun Zhou<sup>1</sup>, Sijan Poudel-Sharma<sup>4</sup>, Juan J. Diaz-Rucco<sup>1</sup>, Emel Kirbas Cilingir<sup>1</sup>, Gordon M. Mitchell<sup>2,3</sup>, J. David Van Dyken<sup>4</sup>, Roger M. Leblanc<sup>1\*</sup>

<sup>1</sup> *Department of Chemistry, University of Miami, 1301 Memorial Dr., Coral Gables, FL, USA 33146*

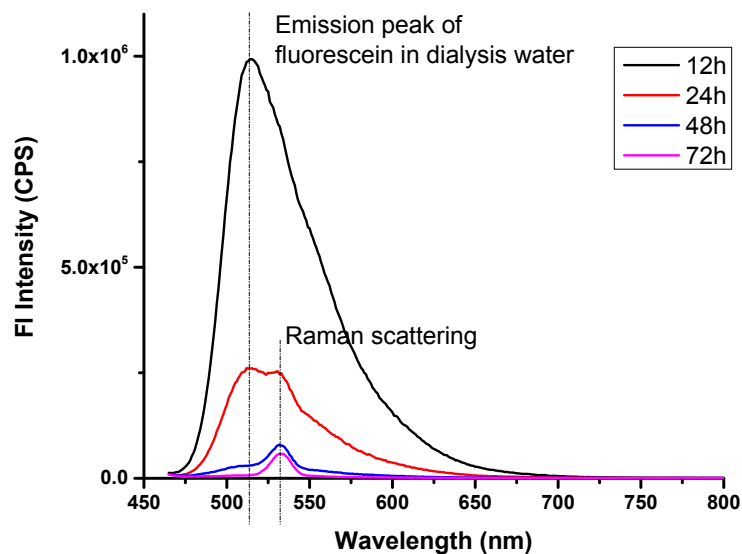
<sup>2</sup> *Department of Physical Therapy, University of Florida, 101 Newell Dr, Gainesville, FL, USA 32603*

<sup>3</sup> *McKnight Brain Institute, University of Florida, 1149 Newell Dr, Gainesville, FL, USA 32610*

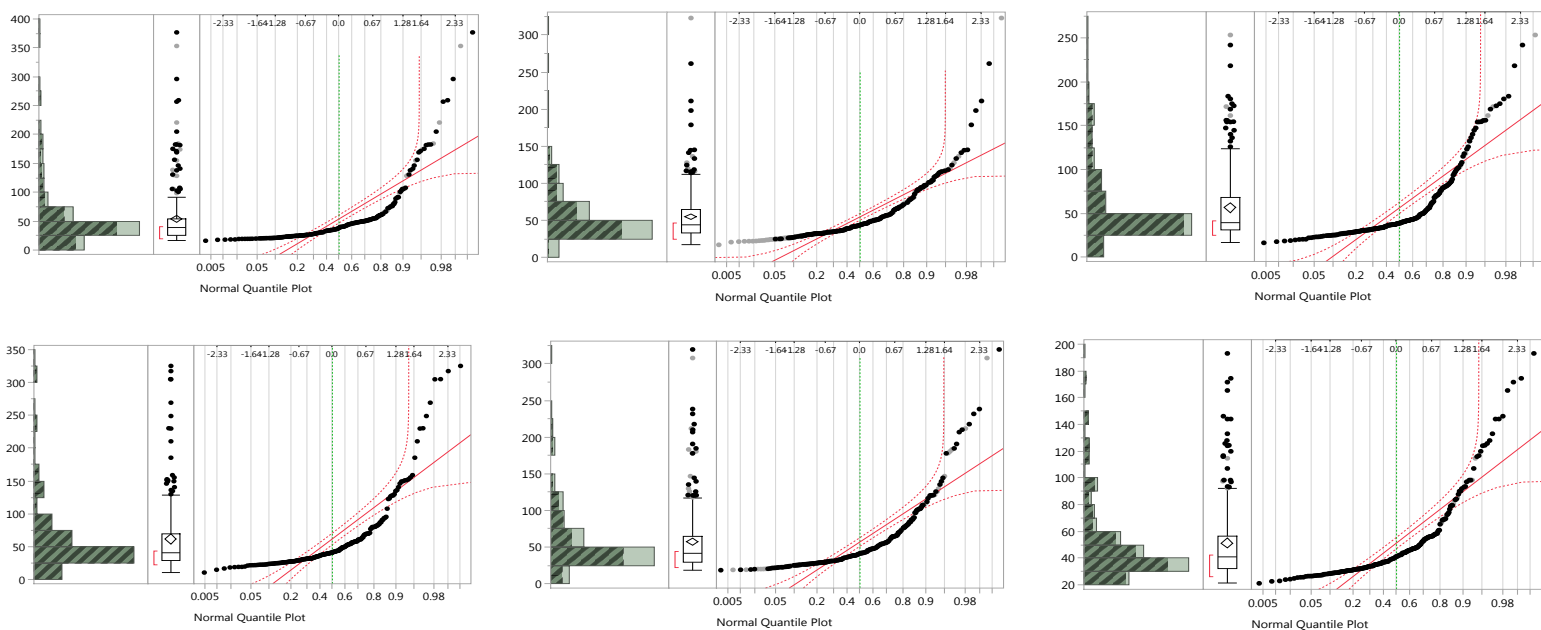
<sup>4</sup> *Department of Biology, University of Miami, 1301 Memorial Dr., Coral Gables, FL, USA 33146*

\*Corresponding Author

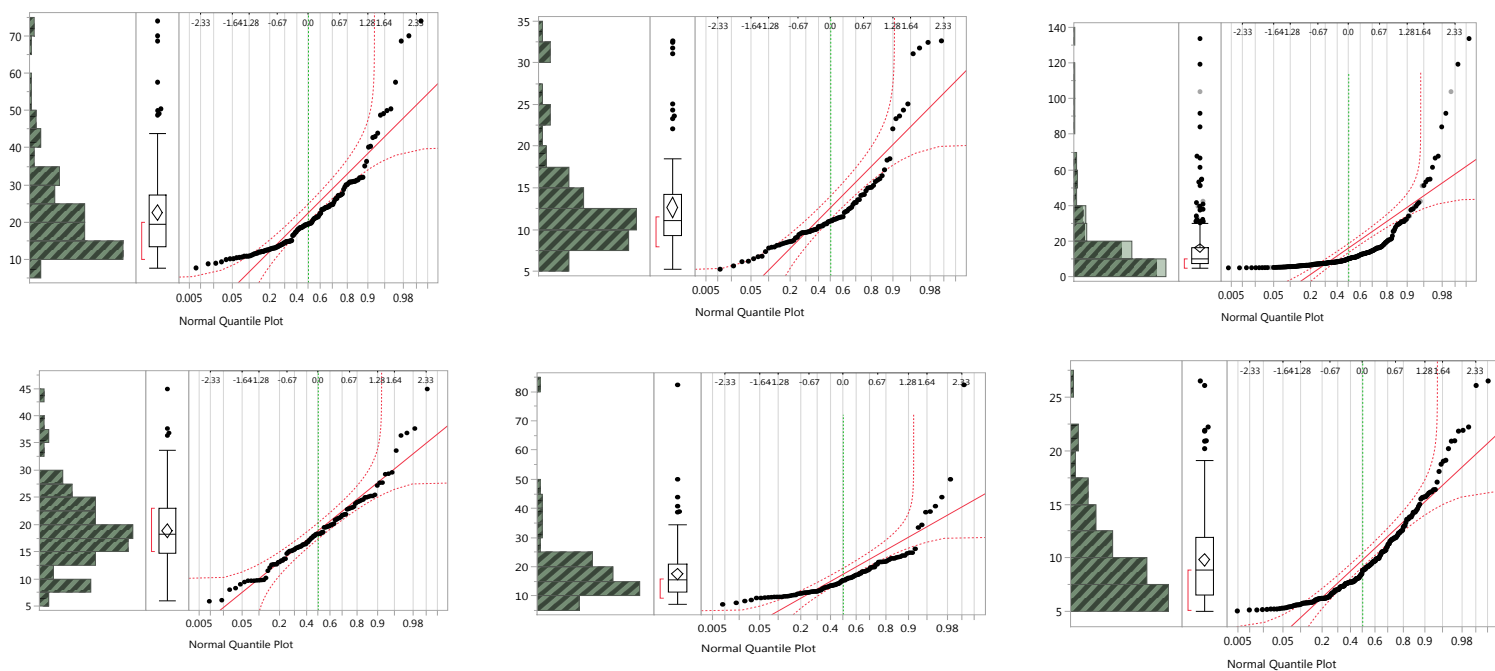
rml@miami.edu



**Figure S-1.** Intensity of the fluorescence emission peak of fluorescein present in dialysis water decreased during purification every time dialysis water changed. After 3 days of dialysis, there was no fluorescence emission peak in the dialysis water showing the elimination of the free fluorescein in the GluCD-F dispersed in water.



**Figure S-2.** Area distributions of EBY.VW 5000-C (Hex-) (top three, for three replicates) and EBY.VW 5000-T (Hex-) (bottom three, for three replicates)



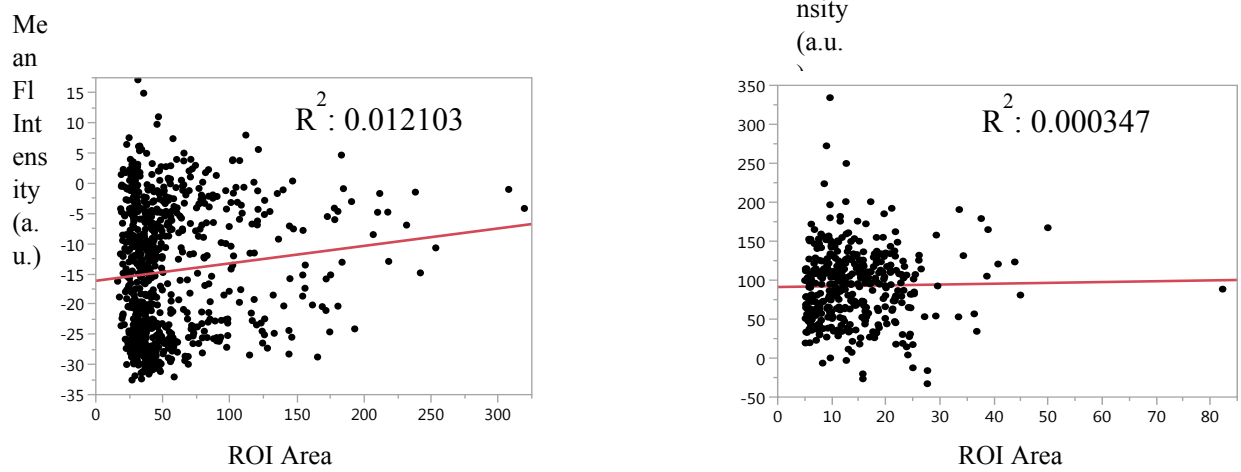
**Figure S-3.** Area distributions of BC- C (Hex+) (top three, for three replicates) and BC-T (Hex+) (bottom three, for three replicates)

**Table S-1.** The mean areas of ROIs for each group

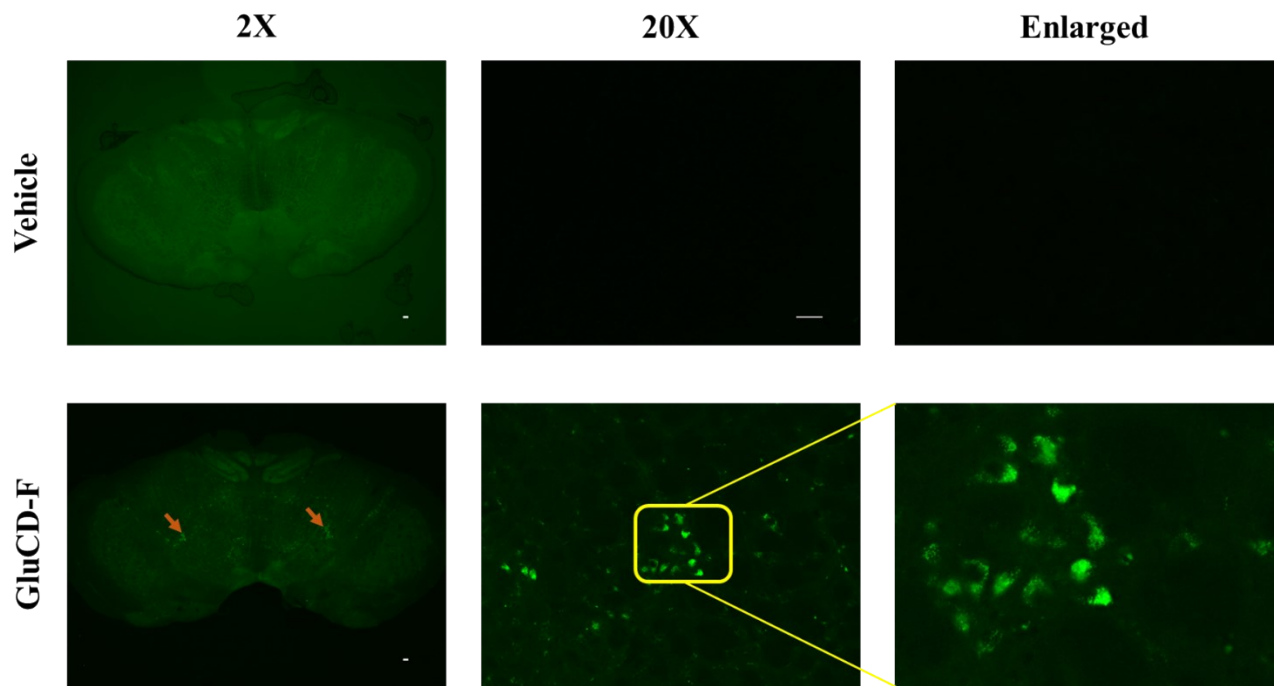
	<b>EBY.VW 5000</b>	<b>BC</b>
<b>Control 1</b>	62.05	22.55
<b>Control 2</b>	54.17	12.67
<b>Control 3</b>	54.78	16.20
<b>Treatment 1</b>	56.27	18.87
<b>Treatment 2</b>	51.36	17.48
<b>Treatment 3</b>	57.07	9.83

**Table S-2.** Comparison between the mean area of ROIs for each group

<b>Level</b>	<b>-Level</b>	<b>p-value</b>
EBY.VW 5000-C	BC-T	<0.0001*
EBY.VW 5000-C	BC-C	<0.0001*
EBY.VW 5000-T	BC-T	<0.0001*
EBY.VW 5000-T	BC-C	<0.0001*
EBY.VW 5000-C	EBY.VW 5000-T	0.5759
BC-C	BC-T	0.6408



**Figure S-4.** Bi-variate analysis of FI intensity vs ROI area for EB.VW 5000 (Hex-) (left) and BC (Hex+) (right) strains



**Figure S-5.** Representative brainstem fluorescence images from vehicle and glucose carbon dot-fluorescein conjugate (GluCD-F) treated rats. Scale bar (2X): 100  $\mu\text{m}$ , Scale bar (20X): 50  $\mu\text{m}$