

1 **Whole Genome Sequence of an High Temperature Edible**

2 **Mushroom *Pleurotus giganteus* (Zhudugu)**

3

4 Hailong Yu^{1†}, Meiyang Zhang^{1†}, Yating Sun^{1,2†}, Qiaozhen Li¹, Jianyu Liu¹, Chunyan Song¹, Xiaodong
5 Shang¹, Qi Tan¹, Lujun Zhang^{1*} and Hao Yu^{3*}

6

7 ¹National Engineering Research Center of Edible Fungi, institute of Edible Fungi, Shanghai Academy of
8 Agricultural Sciences, Shanghai, China, ²College of Horticulture, Shenyang Agricultural University,
9 Shenyang, Liaoning, China, ³Shandong Provincial Key Laboratory of Applied Mycology, School of Life
10 Sciences, Qingdao Agricultural University, Qingdao, Shandong, China

11

12

13

14

15 * Correspondence: zhanglujun@saas.sh.cn (L.J.Z.); yuhao@qau.edu.cn (H.Y.) Tel: +86-532-5895-7640
16 (H.Y.)

17 † These authors contributed equally to this work

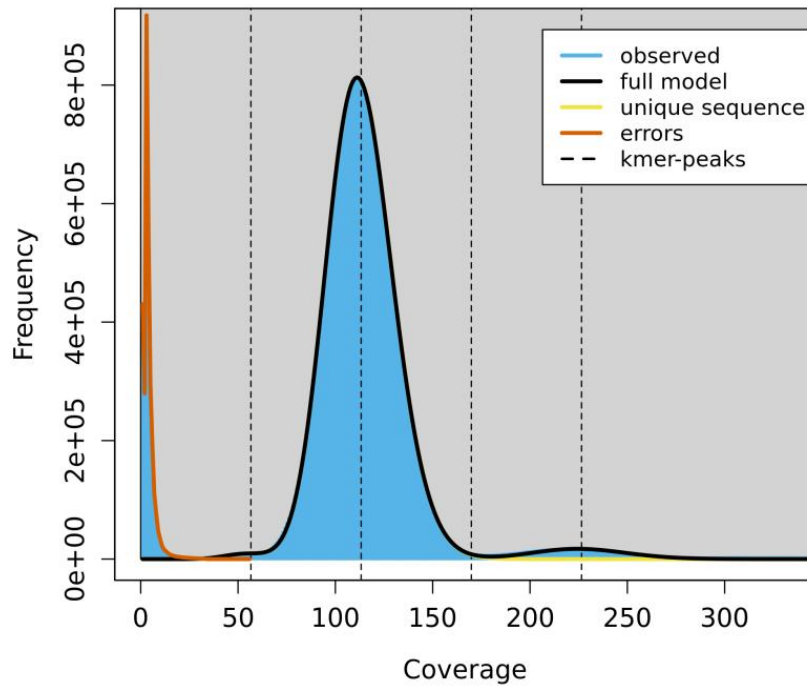
18 Mailing address: 700 Changcheng Road, Chengyang District, Qingdao, Shandong Province, People's
19 Republic of China

20 **Keywords:** *Pleurotus giganteus*; genome; edible mushroom; white-rot fungi; mating locus, CAZymes

21

22

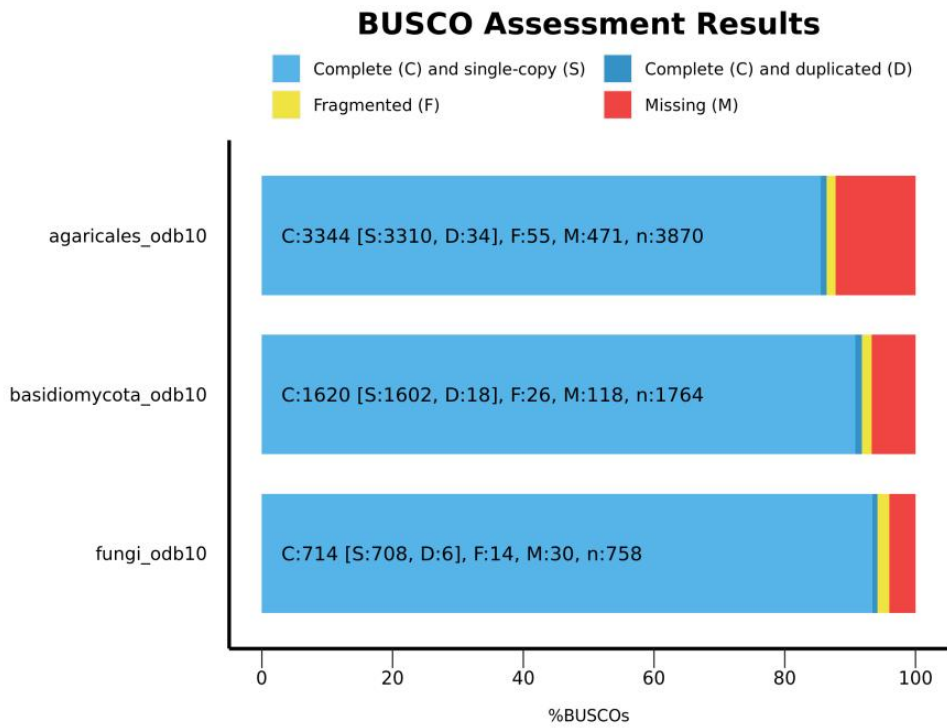
23



25

26 **Figure S1.** Histogram of the 19-mer depth distribution of the Illumina sequencing reads of *P. giganteus*
 27 plotted in GenomeScope. Blue areas indicate the observed k-mer frequencies and the black line
 28 indicates the fitted GenomeScope model ($p = 2$).

29



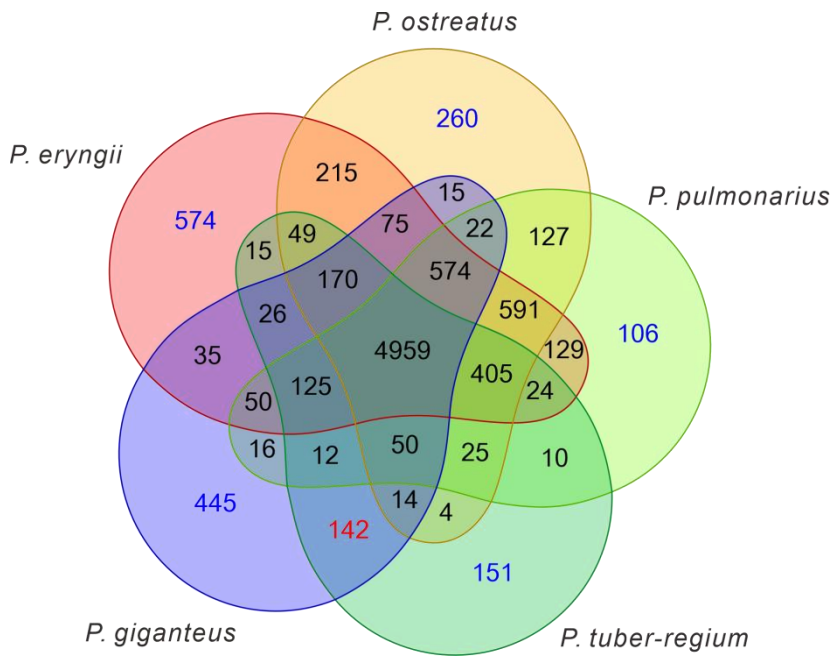
31

32 **Figure S2.** BUSCO assessment of the protein annotation completeness in *P. giganteus* with different
33 BUSCO databases.

34

35

36 **Figure S3**



41 **Table S1** Characteristics of the gene prediction of *P. giganteus*

42

Content	Number/length
Gene number	12628
Average gene length	1761.11 bp
Average protein length	586.04 aa
Total exon number	90508
Total exon/gene length	22239338 bp
Average exon length	245.72 bp
Average exon number per gene	7.17 bp
Total intron number	77880
Total intron length	23734624 bp
Average intron length	304.76 bp
Average intron number per gene	6.17 bp

43

44