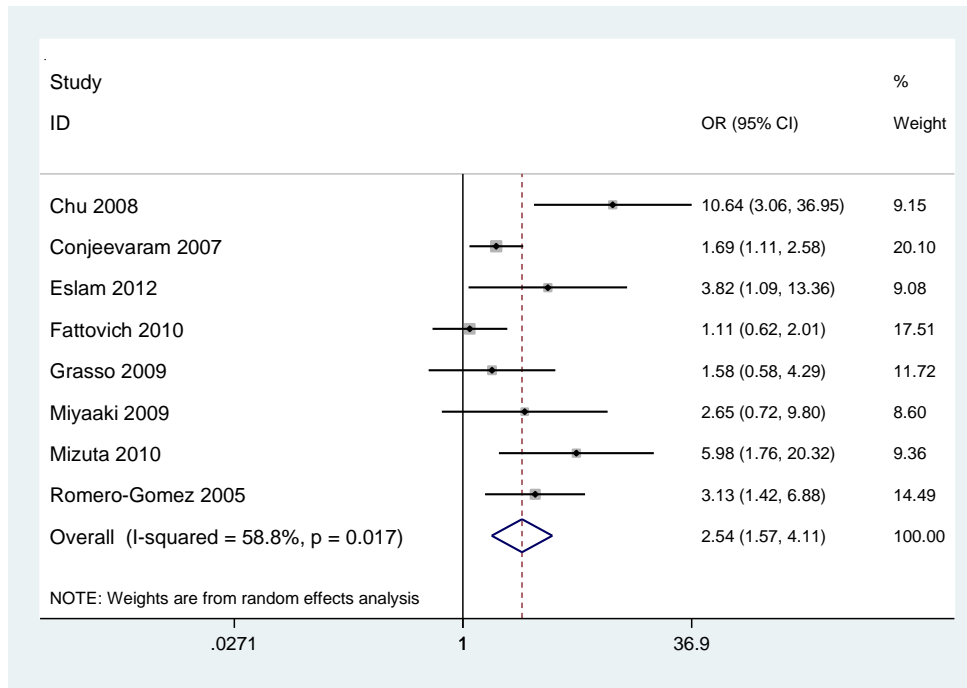
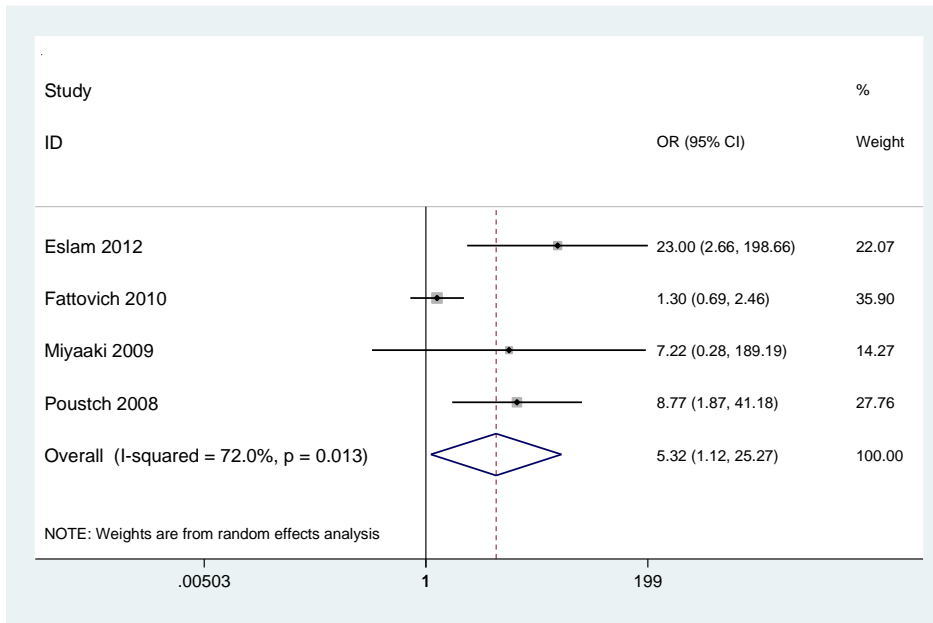


SUPPLEMENTARY DATA



Heterogeneity $Q=17.01$ (d.f.=7) $p=0.017$; $I^2=58.8\%$; $t^2=0.25$; Test of $OR=1$: $p=0.000$

FIGURE 6



Heterogeneity $Q=10.73$ (d.f.=3) $p=0.013$; $I^2=72\%$; $t^2=1.65$; Test of $OR=1$: $p=0.036$

FIGURE 7

LEGENDS

Figure 6. Odds-ratio for the association between IR and SVR in subjects with HCV

G1. Study analysis of HOMA-IR index cut-off > 2.

Figure 7. Odds-ratio for the association between IR and SVR in subjects with HCV

G2/G3. Study analysis of HOMA-IR index cut-off > 2