

## **SUPPLEMENTARY MATERIAL**

### **Genomic Landscape of Endometrial Carcinomas of No Specific Molecular Profile**

Momeni-Boroujeni et al.

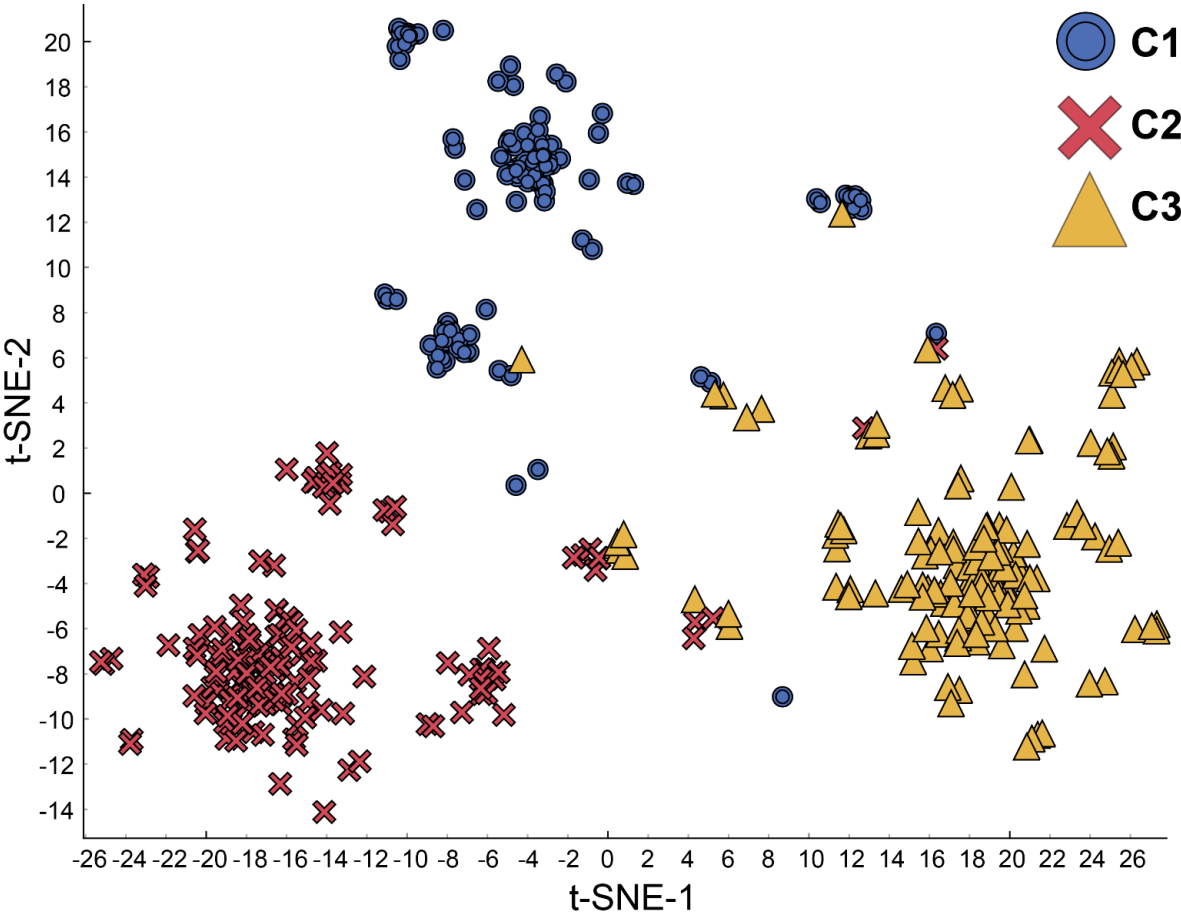
Supplementary Table S1

Supplementary Figures S1 – S7

**Supplementary Table S1 - Regression summaries of multivariate Cox regression disease-free and overall survival analysis of endometrial carcinomas of no special molecular profile (NSMP-EC).**

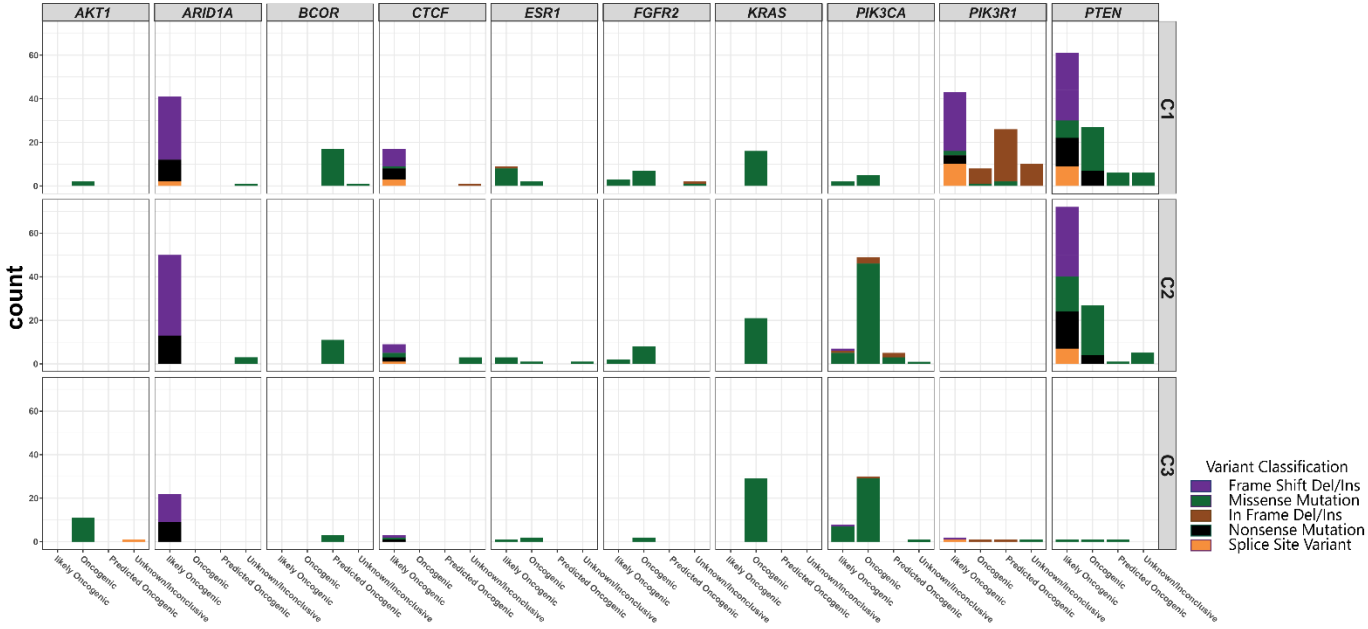
	<b>coef</b>	<b>exp(coef)</b>	<b>se(coef)</b>	<b>Z</b>	<b>P-Value</b>
<b>Disease-Free Survival</b>					
Tumor Morphologic Category: FIGO Grade 2	1.20740	3.34478	0.42980	2.80900	0.00497
Tumor Morphologic Category: FIGO Grade 3	2.34934	10.47867	0.44642	5.26300	0.00000
Tumor Morphologic Category: Non-endometrioid Morphology	2.55677	12.89411	0.47325	5.40300	0.00000
Genomic Cluster: Cluster 2	0.03201	1.03253	0.37084	0.08600	0.93121
Genomic Cluster: Cluster 3	0.40672	1.50189	0.34731	1.17100	0.24157
FIGO stage: Stage II	0.80296	2.23214	0.57435	1.39800	0.16210
FIGO stage: Stage III	0.44768	1.56467	0.35074	1.27600	0.20183
FIGO stage: Stage IV	1.21554	3.37212	0.33304	3.65000	0.00026
<b>Overall Survival</b>					
Tumor Morphologic Category: FIGO Grade 2	1.95280	7.04850	0.81600	2.39300	0.01671
Tumor Morphologic Category: FIGO Grade 3	2.97590	19.60810	0.82060	3.62600	0.00029
Tumor Morphologic Category: Non-endometrioid Morphology	3.42030	30.57870	0.81150	4.21500	0.00003
Genomic Cluster: Cluster 2	1.29690	3.65780	0.65760	1.97200	0.04861
Genomic Cluster: Cluster 3	1.39790	4.04650	0.65170	2.14500	0.03197
FIGO stage: Stage II	0.26020	1.29720	0.78020	0.33400	0.73875
FIGO stage: Stage III	0.68740	1.98860	0.44240	1.55400	0.12025
FIGO stage: Stage IV	1.55850	4.75170	0.41760	3.73200	0.00019

Supplementary Figure S1



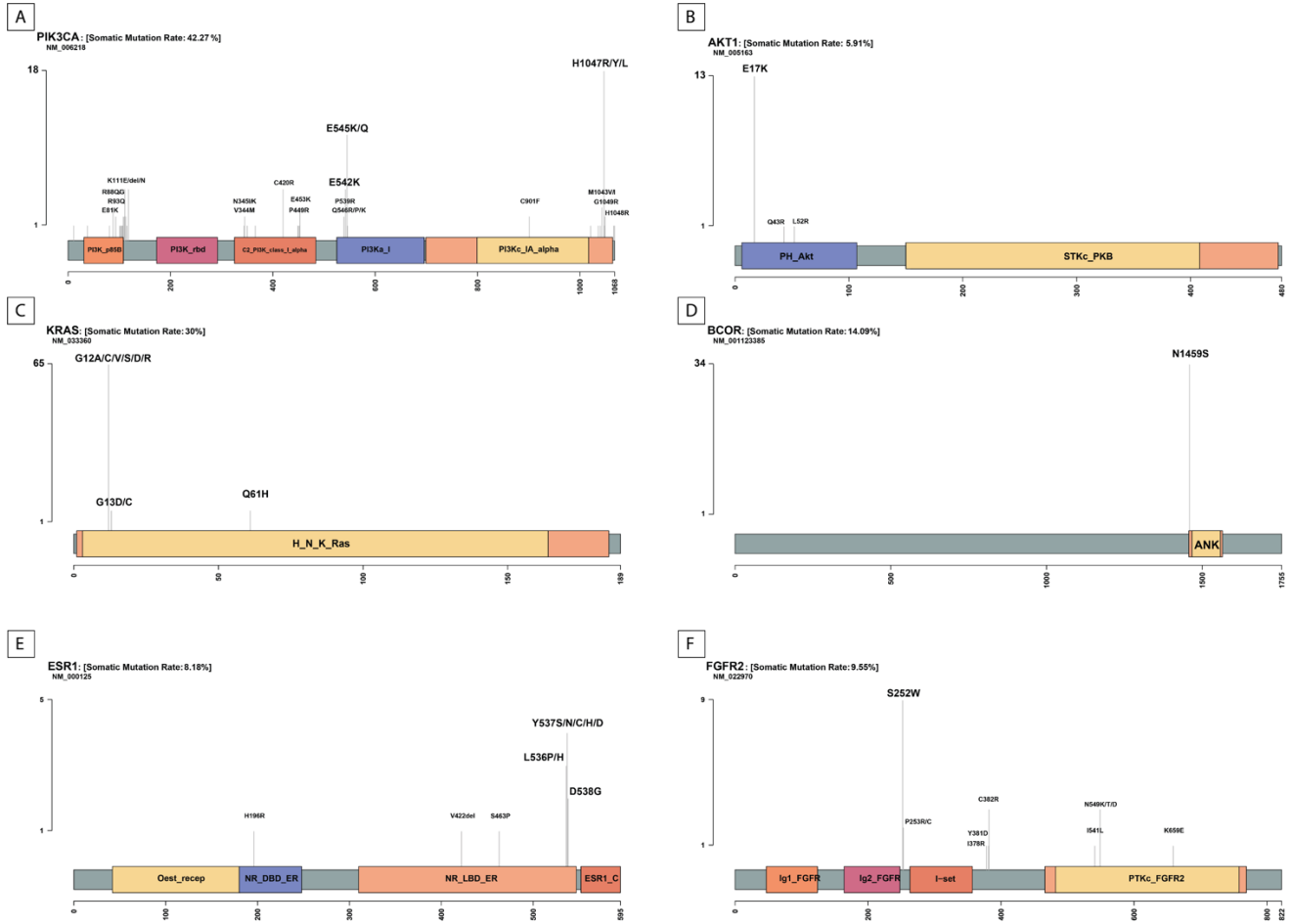
**Supplementary Figure S1.** Two-dimensional t-Distributed Stochastic Neighbor Embedding (t-SNE) map based on molecular features of endometrial carcinomas of no special molecular profile (NSMP-EC). HDBSCAN clustering shows the presence of 3 distinct molecular clusters among NSMP-EC tumors. C1, Cluster 1; C2, Cluster 2; C3, Cluster 3.

**Supplementary Figure S2**



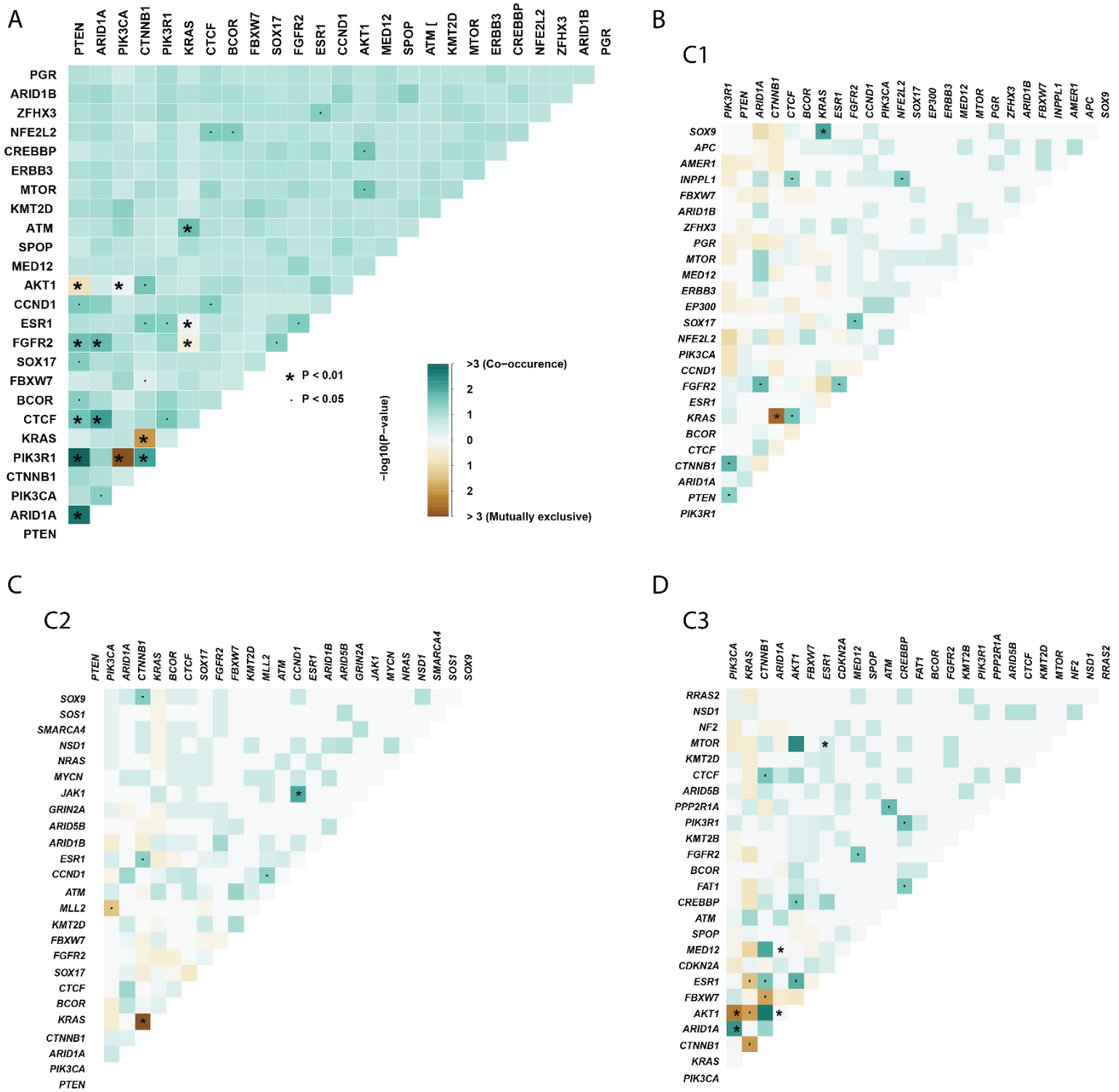
**Supplementary Figure S2.** Mutation function predictions of recurrently mutated genes in endometrial carcinomas of no special molecular profile (NSMP-EC). C1, Cluster 1; C2, Cluster 2; C3, Cluster 3.

## Supplementary Figure S3



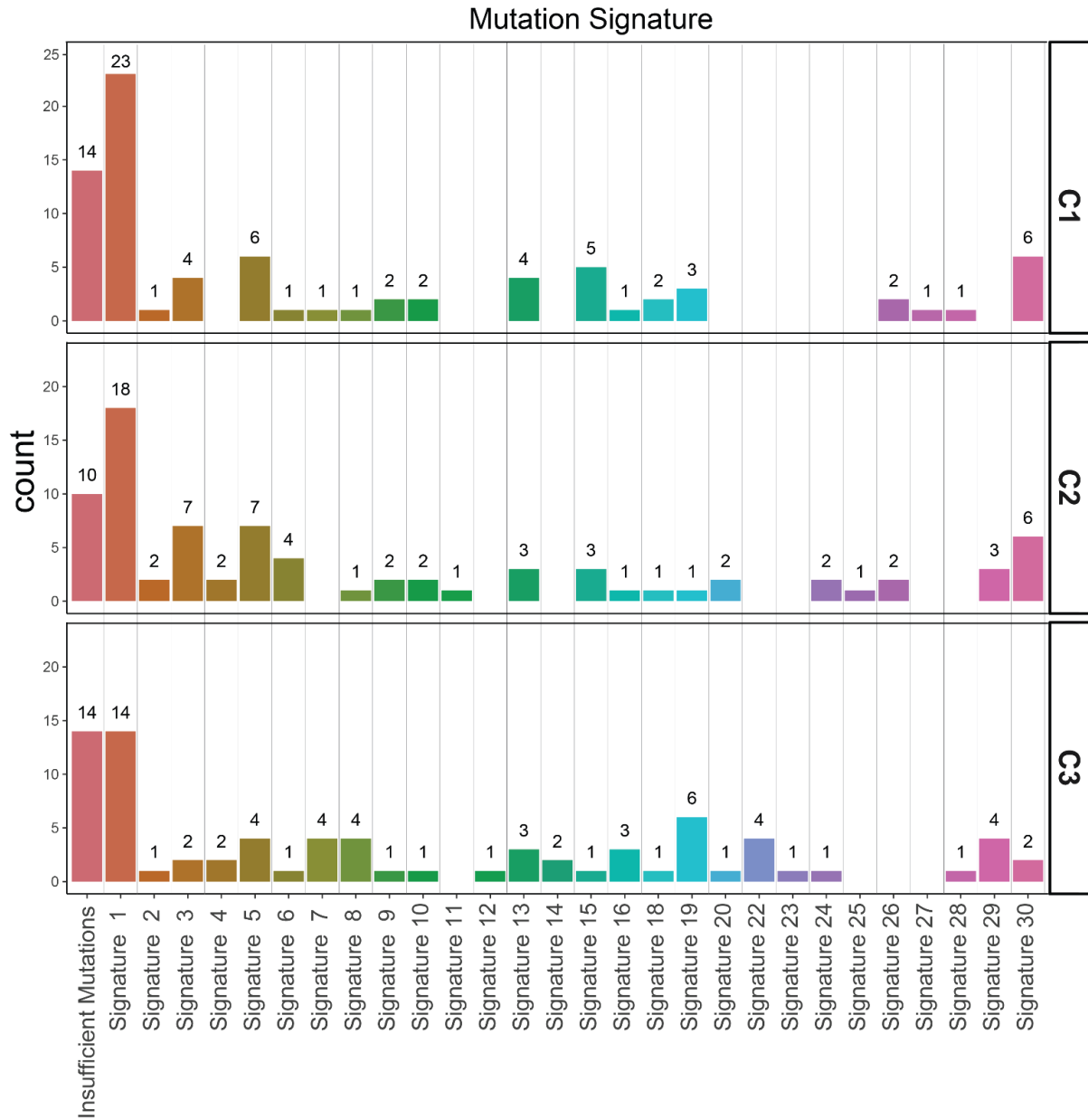
**Supplementary Figure S3.** Distribution of somatic *PIK3CA*, *AKT1*, *KRAS*, *BCOR*, *ESR1*, *FGFR2* mutations in endometrial carcinomas of no special molecular profile (NSMP-EC).

## Supplementary Figure S4



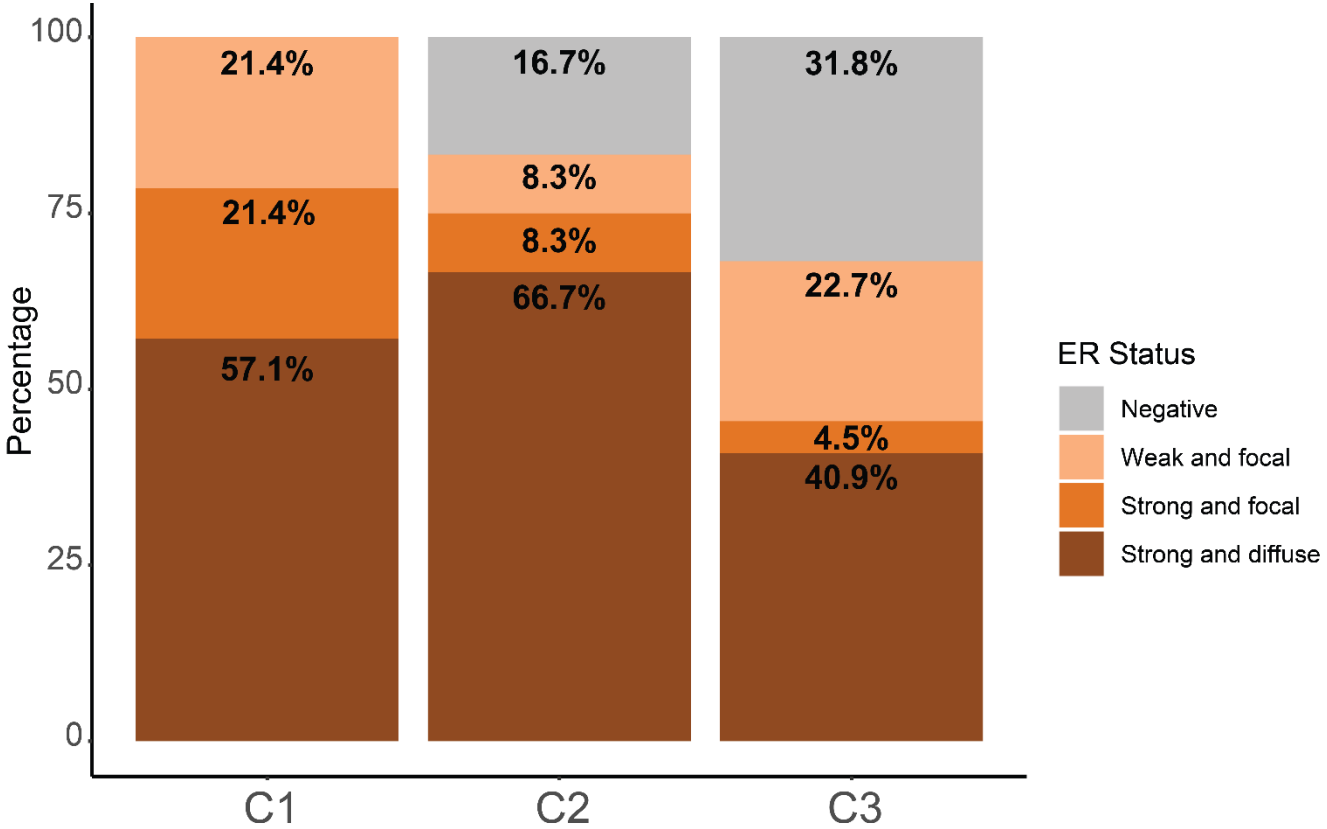
**Supplementary Figure S4.** Distance matrix showing the somatic interaction of commonly altered genes in endometrial carcinomas of no special molecular profile (NSMP-EC) (A) and among molecular clusters (B-D). Significant co-occurrences are marked in shades of green and the significant mutual exclusivity marked in shades of brown. The size of the \* depicts the p-value and the intensity of color shows the degree of association or exclusion. C1, Cluster 1; C2, Cluster 2; C3, Cluster 3.

Supplementary Figure S5



**Supplementary Figure S5.** Distribution of mutational signatures in endometrial carcinomas of no special molecular profile (NSMP-EC). C1, Cluster 1; C2, Cluster 2; C3, Cluster 3.

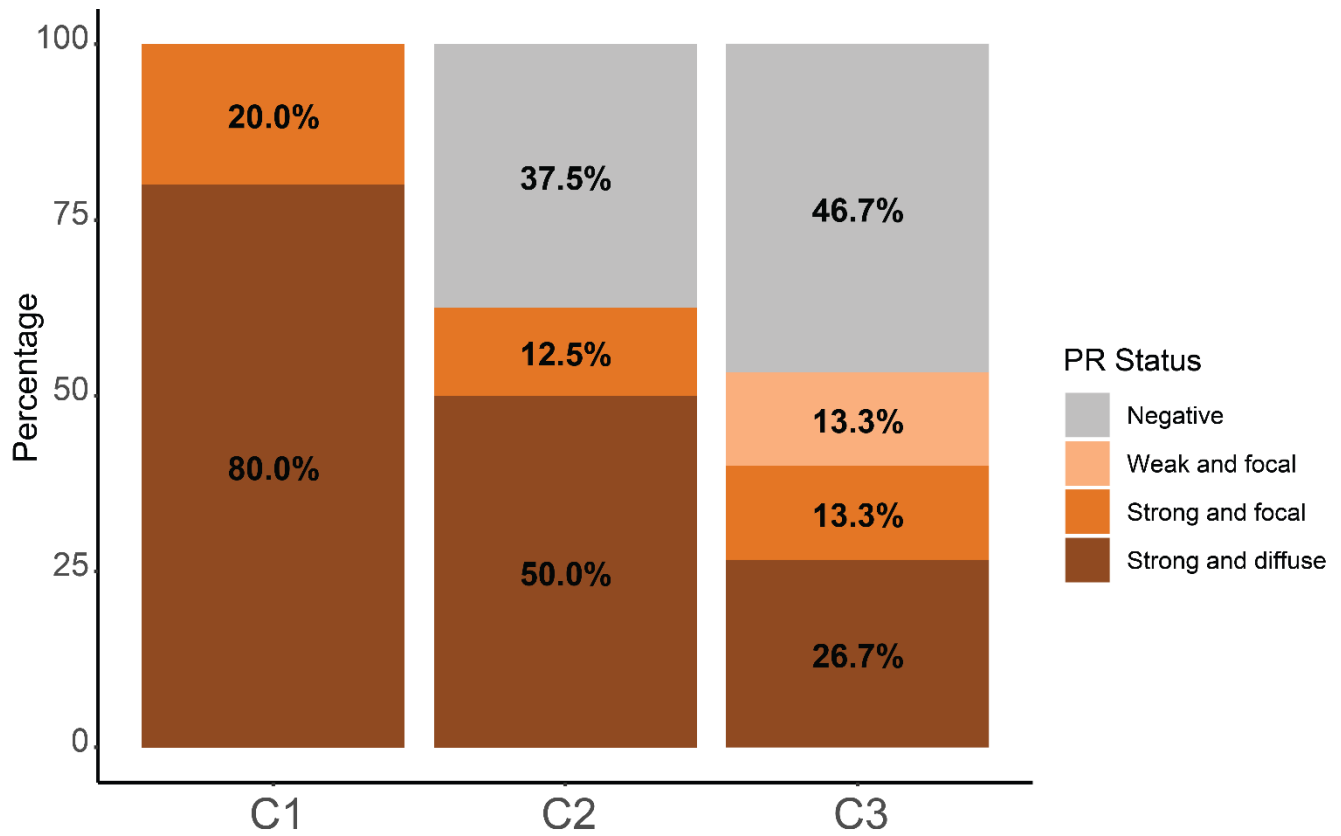
Supplementary Figure S6



Supplementary Figure S6. Distribution of estrogen receptor expression by immunohistochemistry among the molecular clusters of endometrial carcinomas of no special molecular profile (NSMP-EC). C1, Cluster 1; C2, Cluster 2; C3, Cluster 3.



**Supplementary Figure S7**



**Supplementary Figure S7.** Distribution of progesterone receptor expression by immunohistochemistry among the molecular clusters of endometrial carcinomas of no special molecular profile (NSMP-EC). C1, Cluster 1; C2, Cluster 2; C3, Cluster 3.