

COX-1 induction in prostate epithelial cells

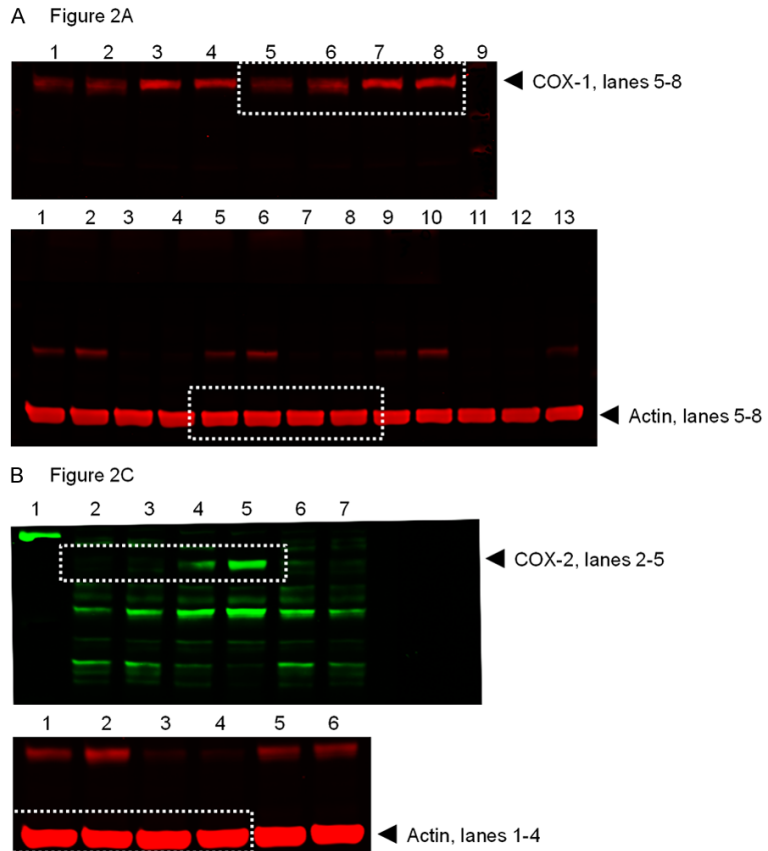


Figure S1. Original western blot images for **Figure 2A, 2C**. A. RWPE-1 cells separated onto nitrocellulose membrane and probed with COX-1 antibody, lanes 5-8 (top panel, red); and Actin antibody, lanes 5-8 (bottom panel, red) for **Figure 2A**. B. RWPE-1 cells probed with COX-2 antibody, lanes 2-5 (top panel, green); and Actin antibody, lanes 1-4 (bottom panel, red) for **Figure 2C**. Areas utilized in Figure images are outlined with white dashed boxes.

COX-1 induction in prostate epithelial cells

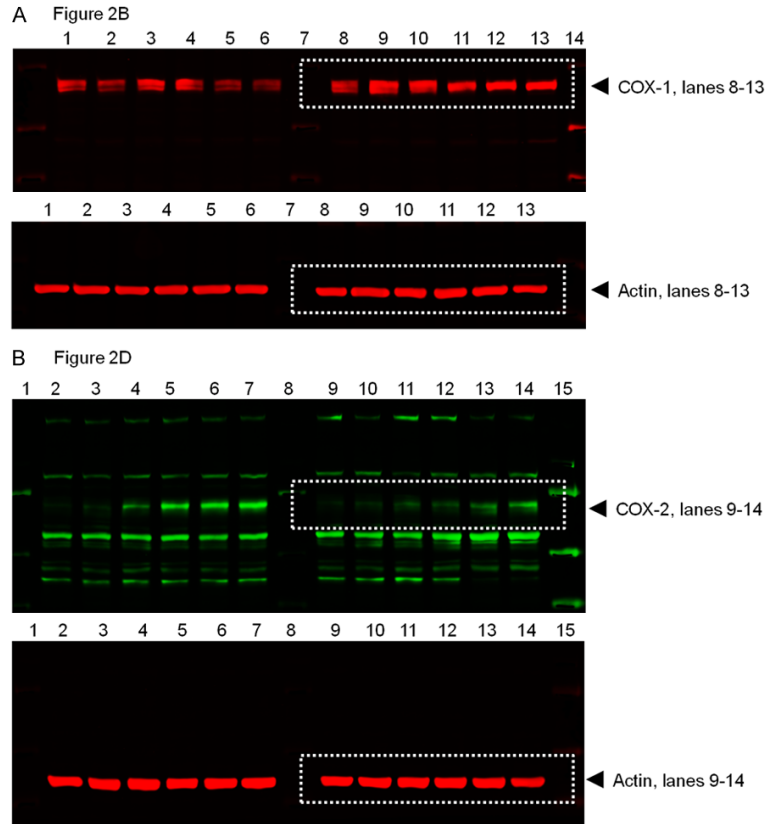


Figure S2. Original western blot images for **Figure 2B** and **2D**. A. BPH-1 cells separated onto nitrocellulose membrane and probed with COX-1 antibody, lanes 8-13 (top panel, red); and Actin antibody, lanes 8-13 (bottom panel, red) for **Figure 2B**. B. BPH-1 cells probed with COX-2 antibody, lanes 9-14 (top panel, green); and Actin antibody, lanes 9-14 (bottom panel, red) for **Figure 2D**. Areas utilized in Figure images are outlined with white dashed boxes.

COX-1 induction in prostate epithelial cells

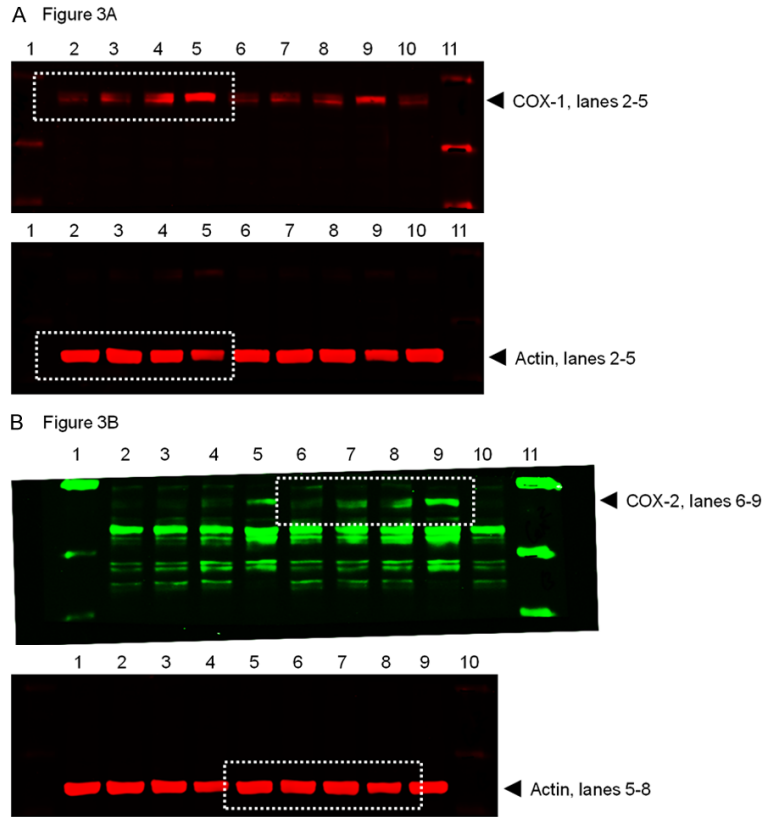


Figure S3. Original western blot images for **Figure 3A** and **3B**. A. RWPE-1 cells separated onto nitrocellulose membrane and probed with COX-1 antibody, lanes 2-5 (top panel, red); and Actin antibody, lanes 2-5 (bottom panel, red) for **Figure 3A**. B. BPH-1 cells probed with COX-2 antibody, lanes 6-9 (top panel, green); and Actin antibody, lanes 5-8 (bottom panel, red) for **Figure 3B**. Areas utilized in Figure images are outlined with white dashed boxes.

COX-1 induction in prostate epithelial cells

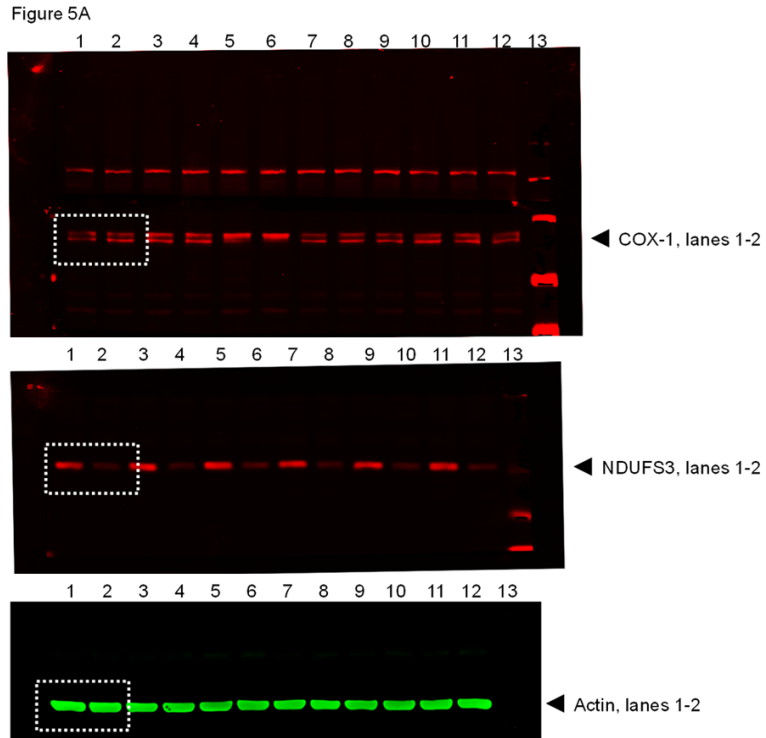


Figure S4. Original western blot images for **Figure 5A**. RWPE-1 cells separated onto nitrocellulose membrane and probed with COX-1 antibody, lanes 1-2 (top panel, red); NDUFS3 antibody, lanes 1-2 (center panel, red); and Actin antibody, lanes 1-2 (bottom panel, green) for **Figure 5A**. Areas utilized in Figure images are outlined with white dashed boxes.