

**Supplementary information**

---

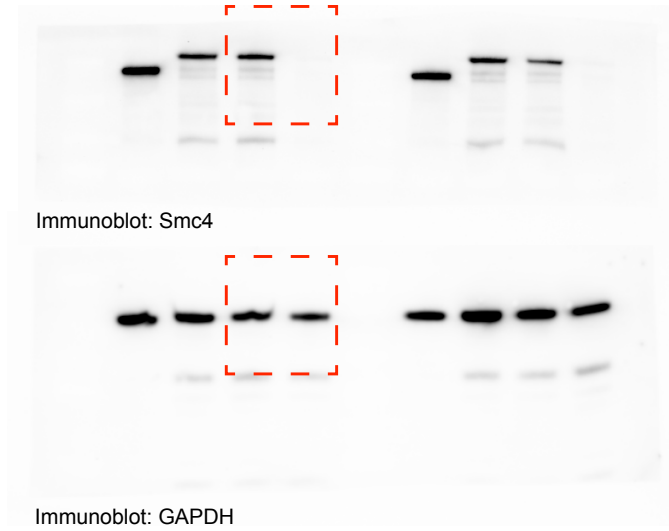
**A mitotic chromatin phase transition prevents perforation by microtubules**

---

In the format provided by the authors and unedited

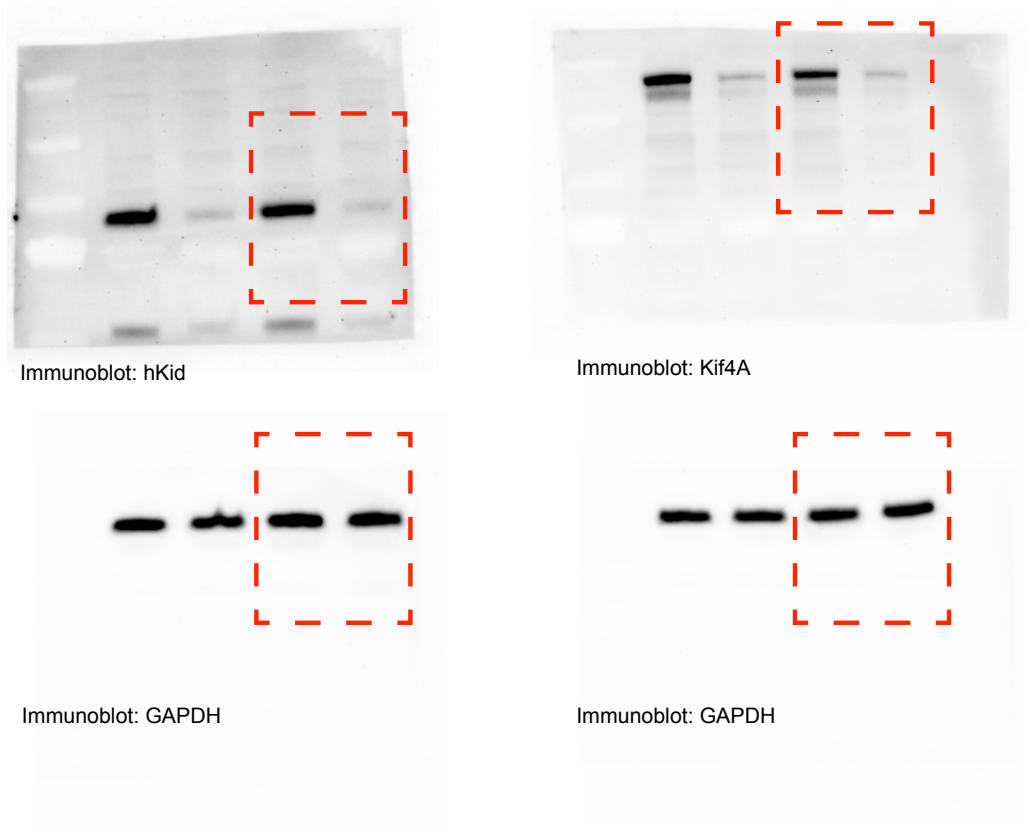
**a**

Extended Data Fig. 1c



**b**

Extended Data Fig. 10e



**Supplementary Figure 1** | Source gel data. The full gels correspond to the data shown in **a**, Extended Data Fig. 1c or **b**, Extended Data Fig. 10e. Red boxes indicate image regions displayed in the respective figures.