

---

**Supplementary information**

---

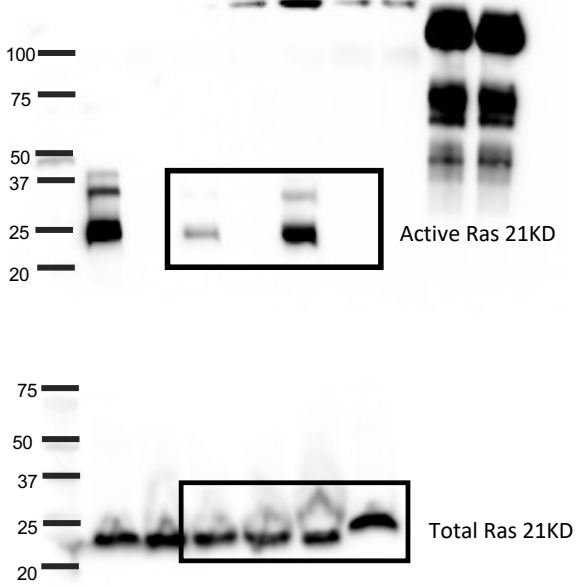
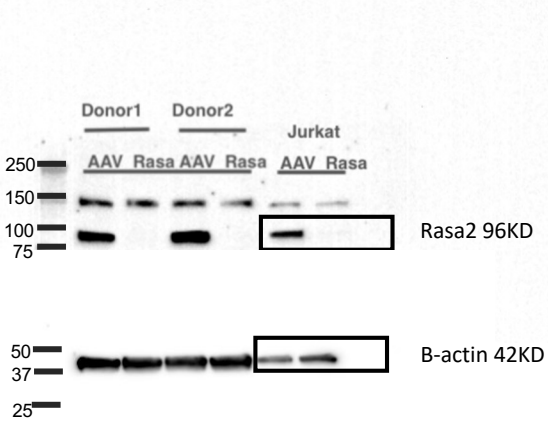
***RASA2* ablation in T cells boosts antigen sensitivity and long-term function**

---

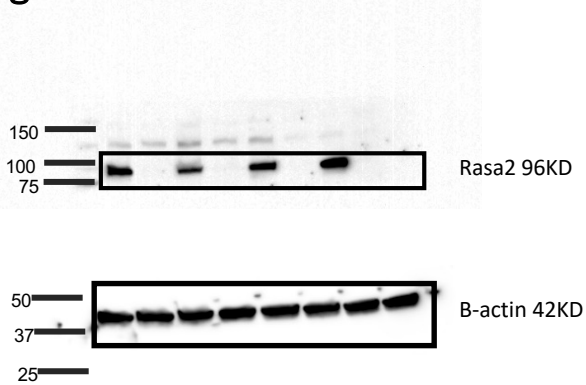
In the format provided by the authors and unedited

# Supplementary Fig. 1: Uncropped gel source data

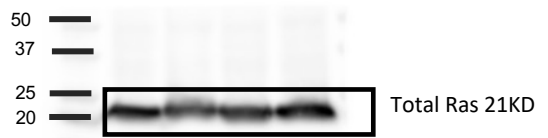
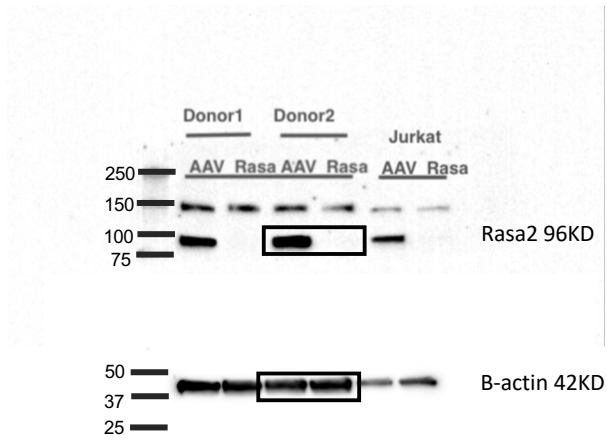
## Main Fig 2b



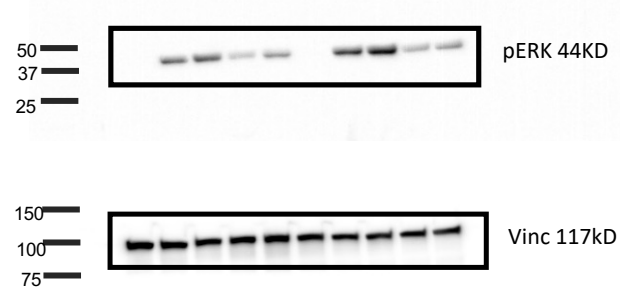
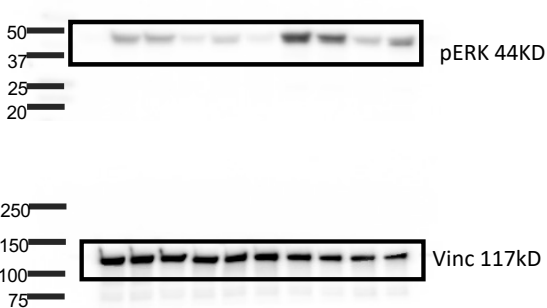
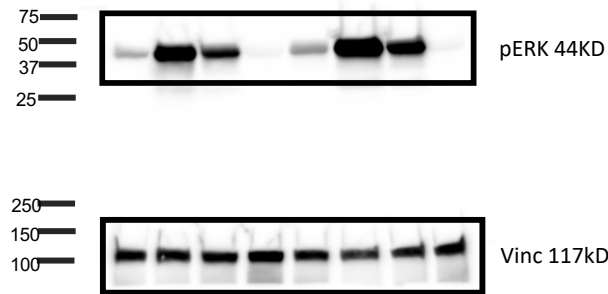
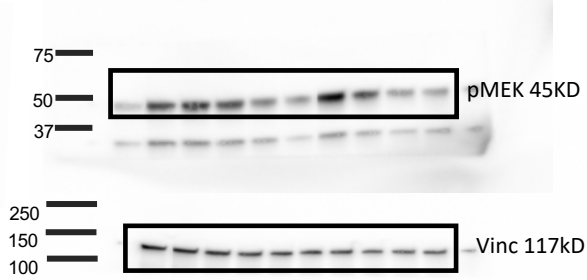
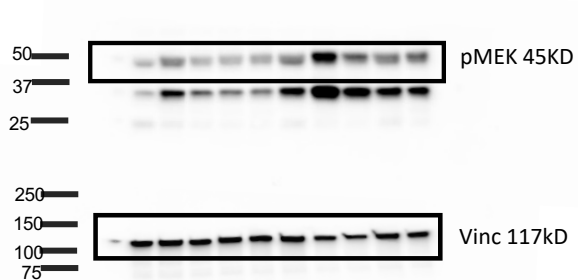
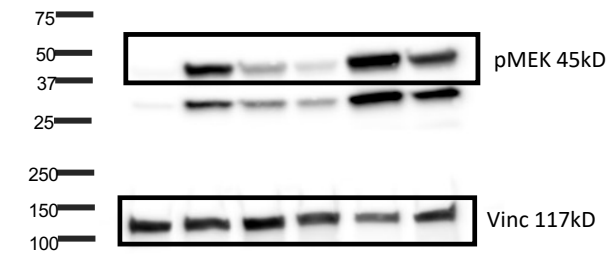
## Extended Fig 2



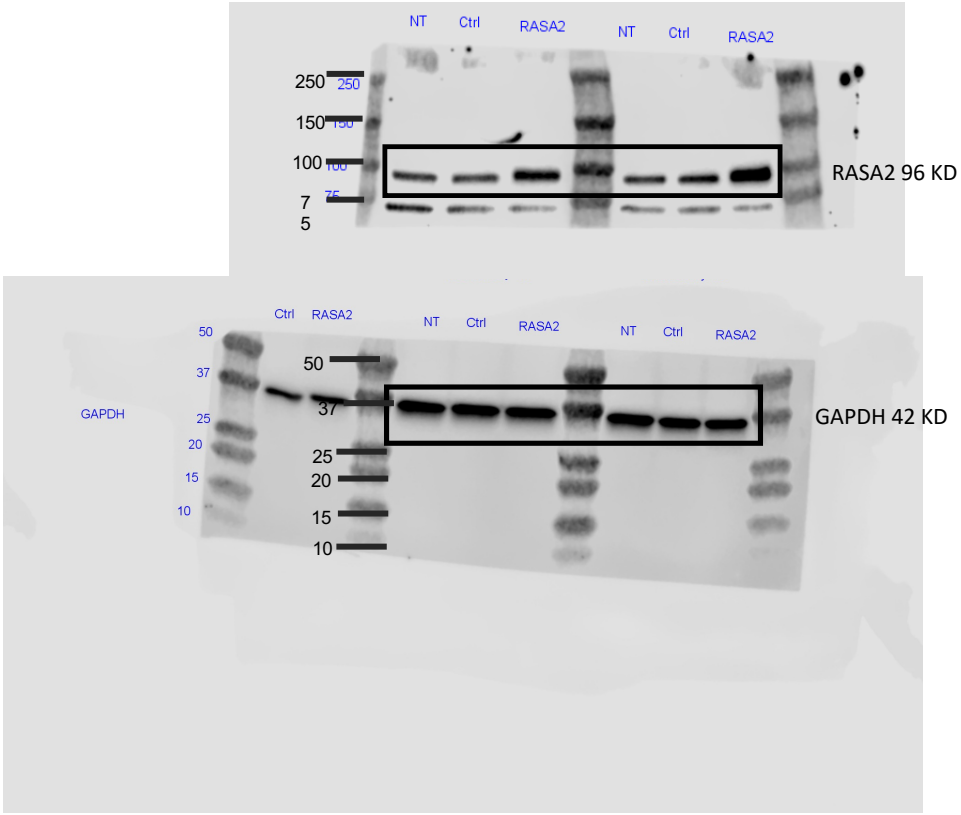
# Extended Fig 3a



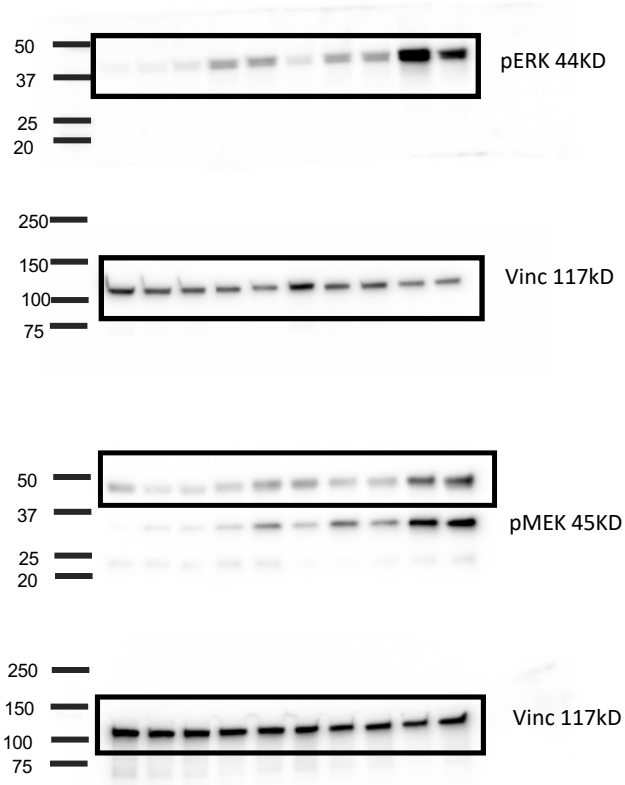
# Extended Fig 3C



Extended Figure 5k



Extended Figure 6f



# Extended Figure 10i

