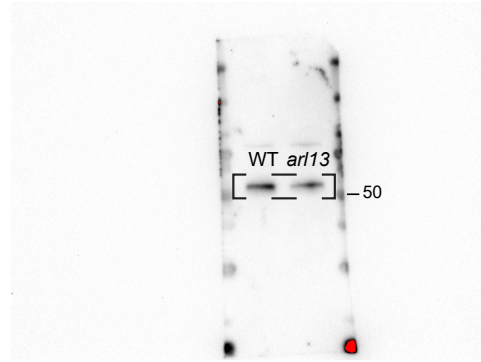
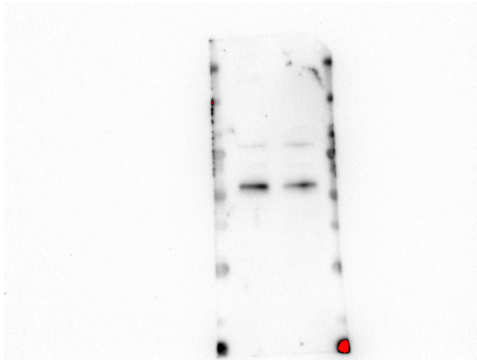


Figure 3A

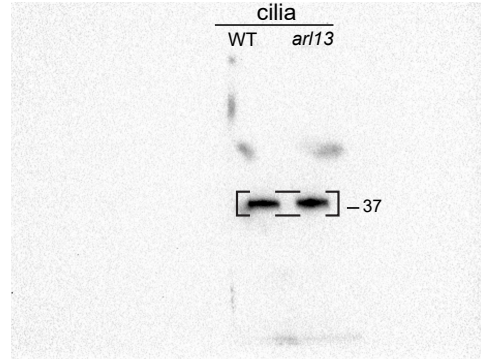
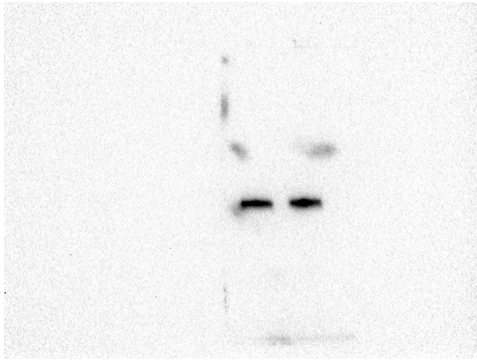
Loaded:
WT, *arl13*

	cilia		
	WT	<i>arl13</i>	kD
anti-BBS1 (1/1.79)			-50
anti-BBS3 1/1.44			-20
anti-BBS4 (1/1.07)			-37
anti-BBS5 (1/1.78)			-37
anti-IC2 (1/1)			-75

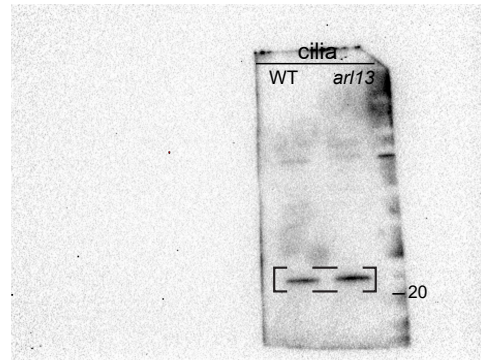
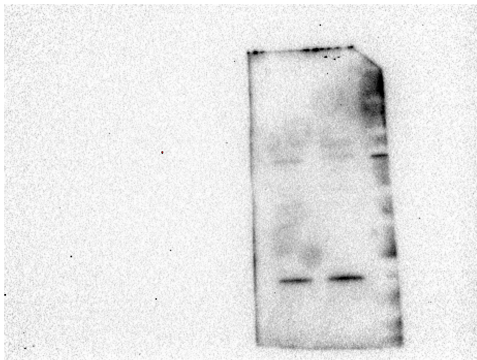
anti-BBS1



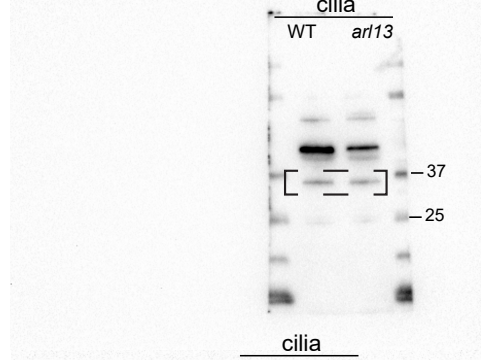
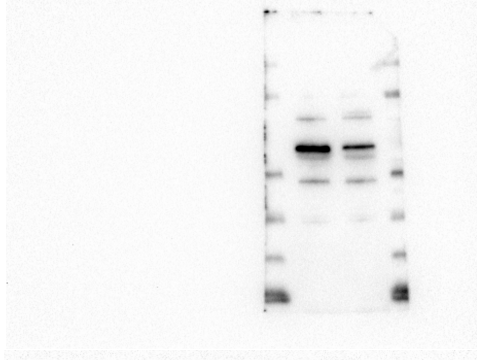
anti-BBS3



anti-BBS4



anti-BBS5



anti-IC2

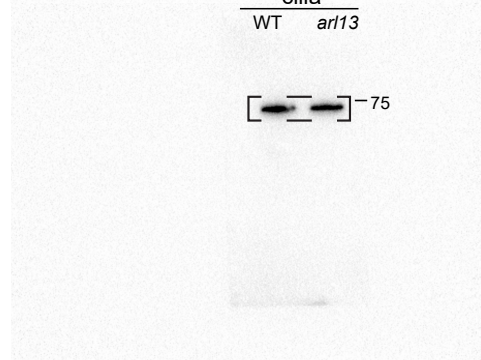
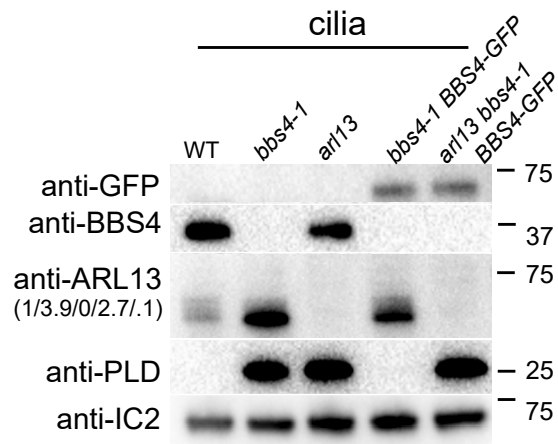


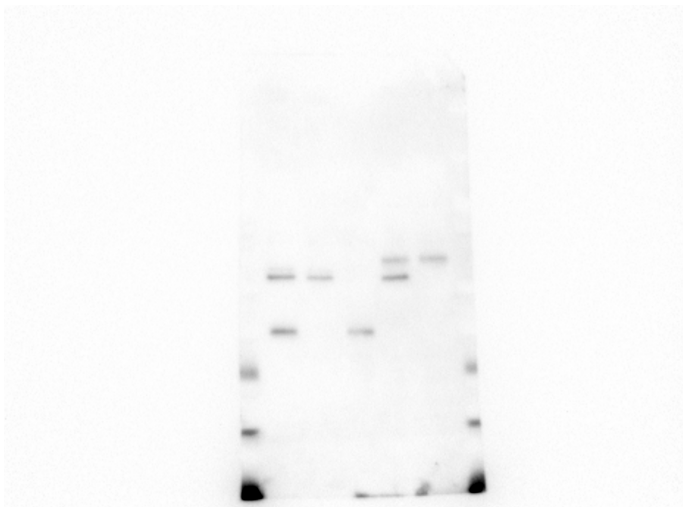
Figure 3B

Loaded:

WT, *bbs4-1*, *arl13*, *bbs4-1 BBS4-GFP*,
and *arl13 bbs4-1 BBS4-GFP*



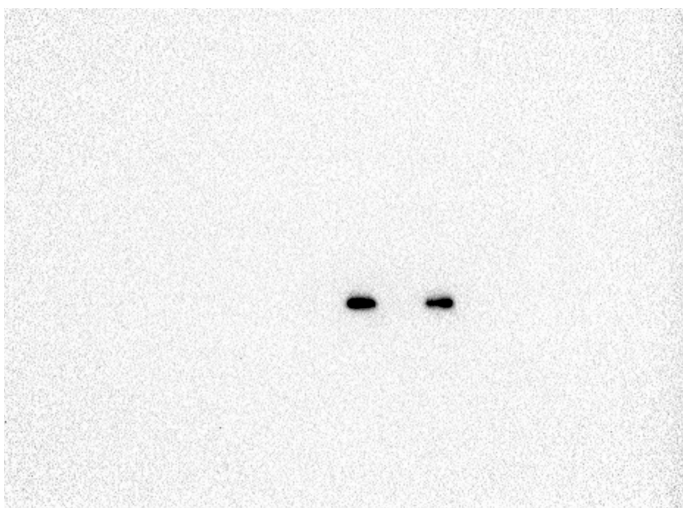
anti-GFP



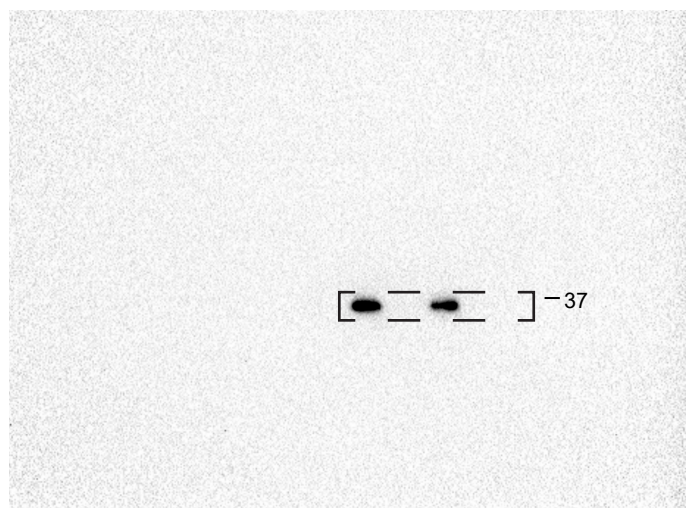
WT *bbs4-1* *arl13* *bbs4-1 BBS4-GFP* *arl13 bbs4-1 BBS4-GFP*
[- - -] - 75



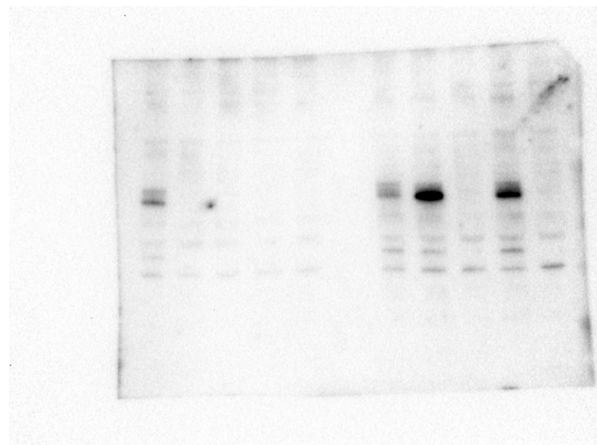
anti-BBS4



[- - -] - 37



anti-ARL13



[- - -] - 75

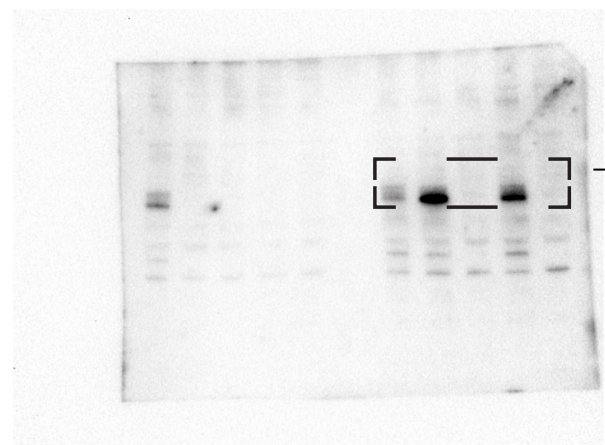
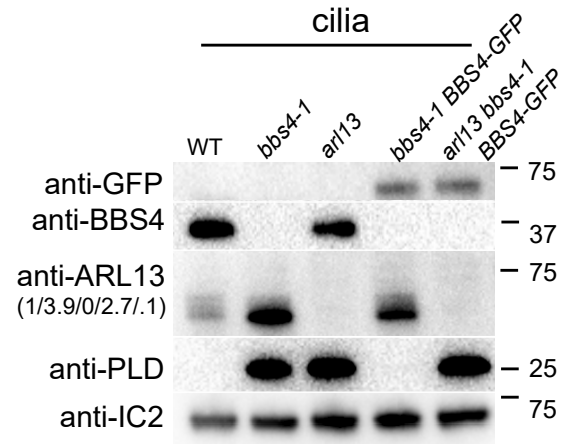


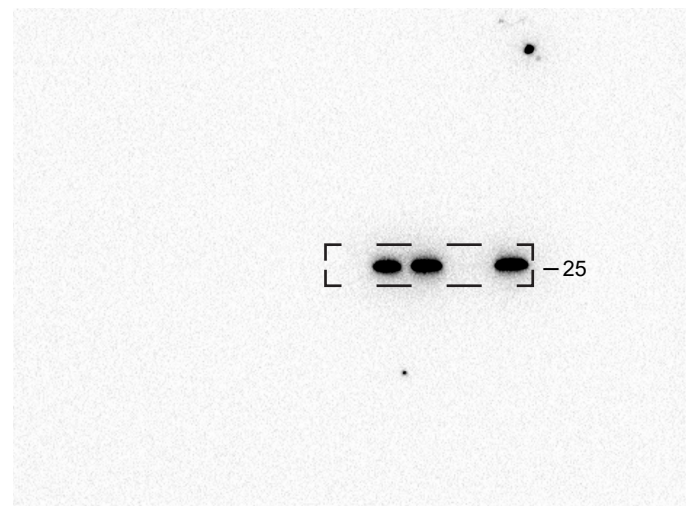
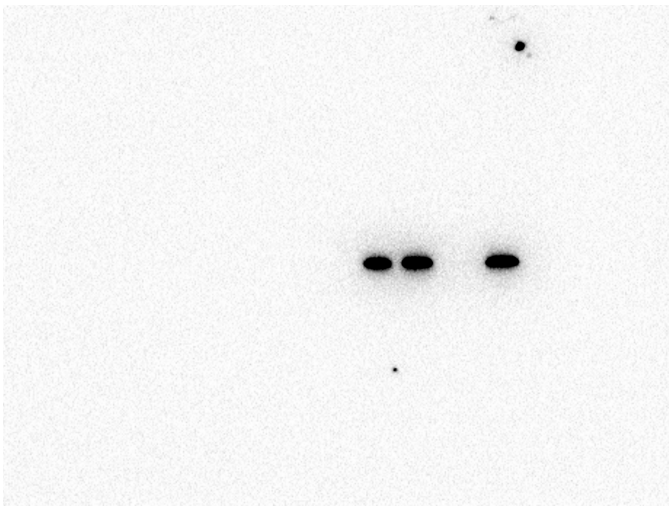
Figure 3B_continued

Loaded:

WT, *bbs4-1*, *arl13*, *bbs4-1 BBS4-GFP*,
and *arl13 bbs4-1 BBS4-GFP*



anti-PLD



anti-IC2

