

Figure 5A

A

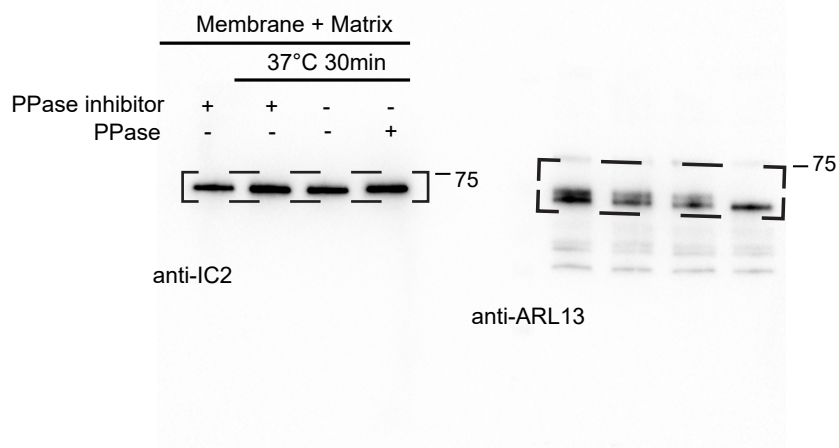
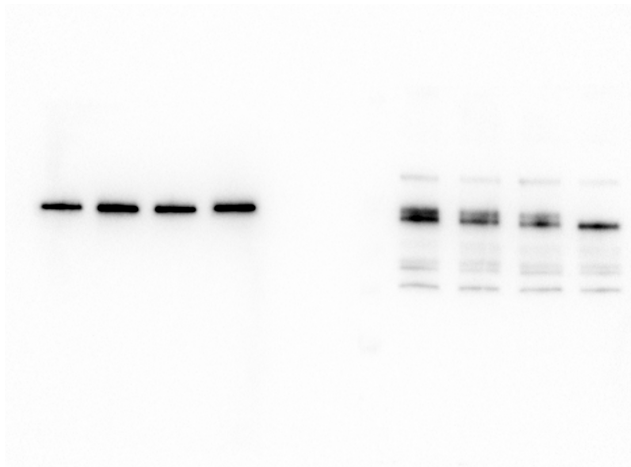
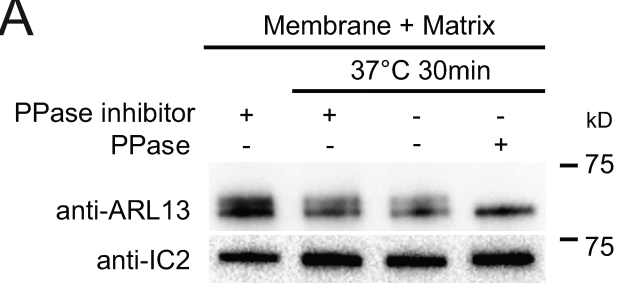
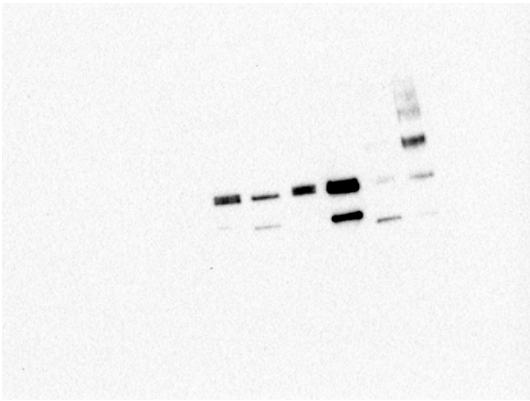
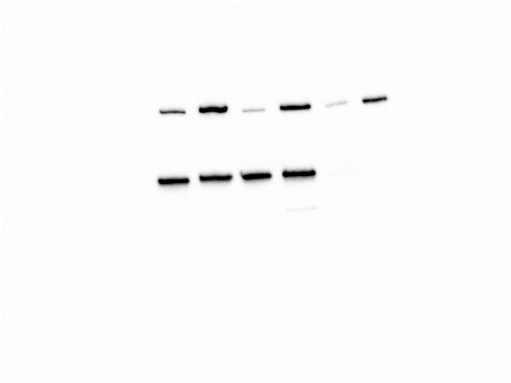


Fig. 5B – Source file

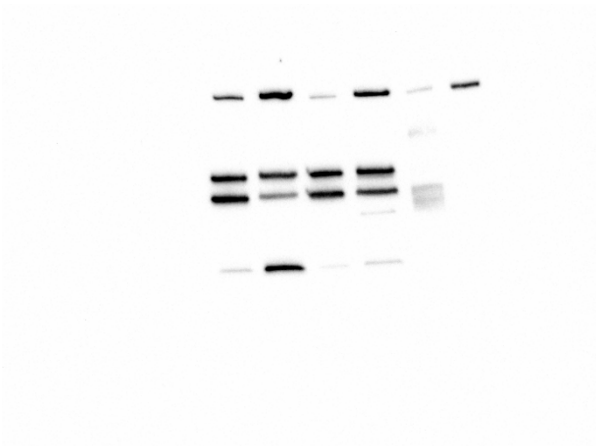
1st AB: anti-ARL13



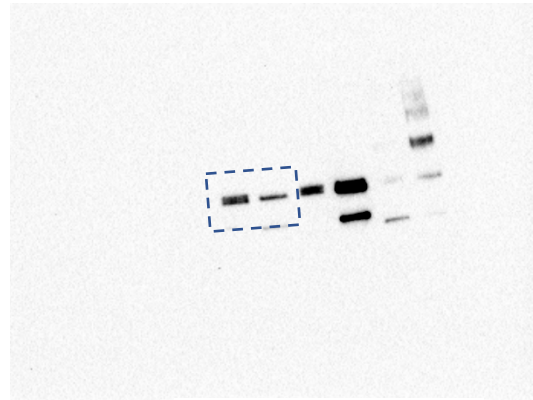
Anti-IC2 and anti-IFT172



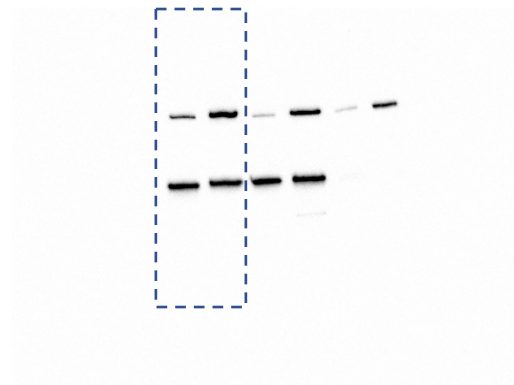
3rd Abs: Anti-FAP12 and anti-PLD



Exp1 Exp2
FL reg FL reg (x Y)



Exp1 Exp2
FL reg FL reg (x Y)



Exp1 Exp2
FL reg FL reg (x Y)

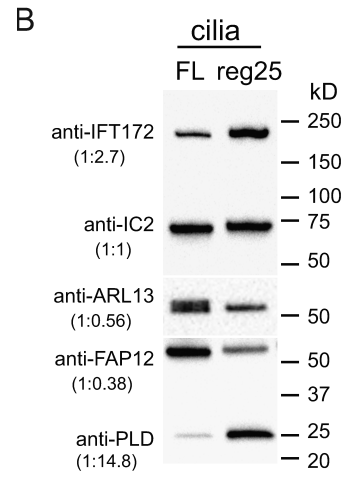
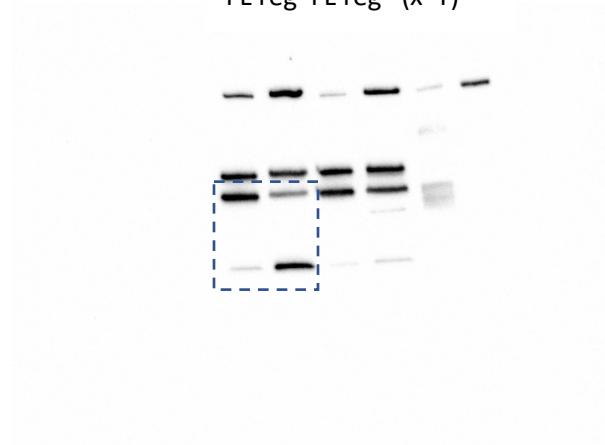
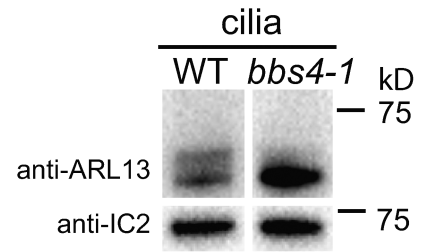
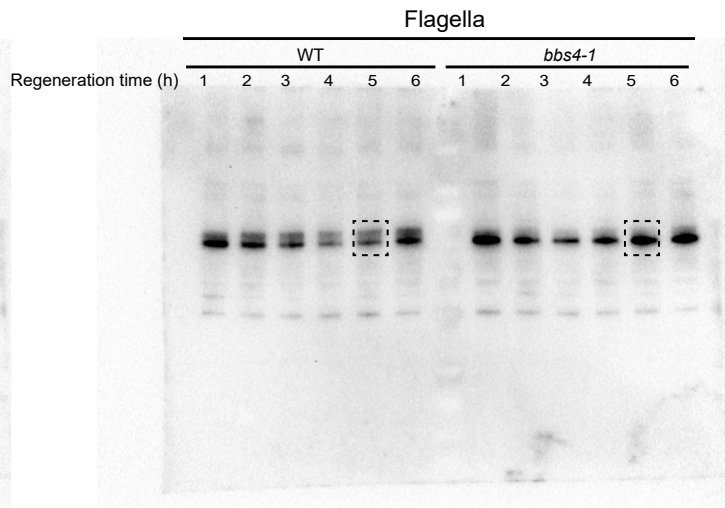
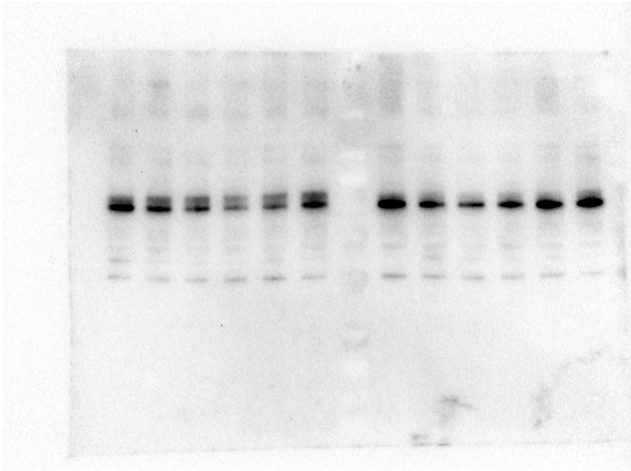


Fig. 5C (one membrane, 2 antibodies)



anti-ARL13



anti-IC2

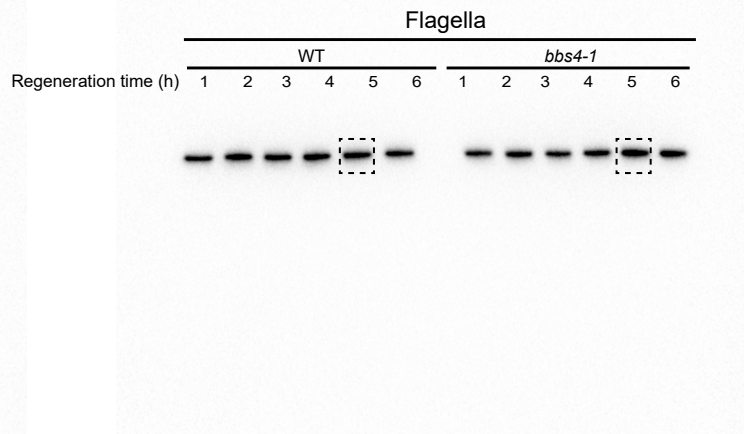
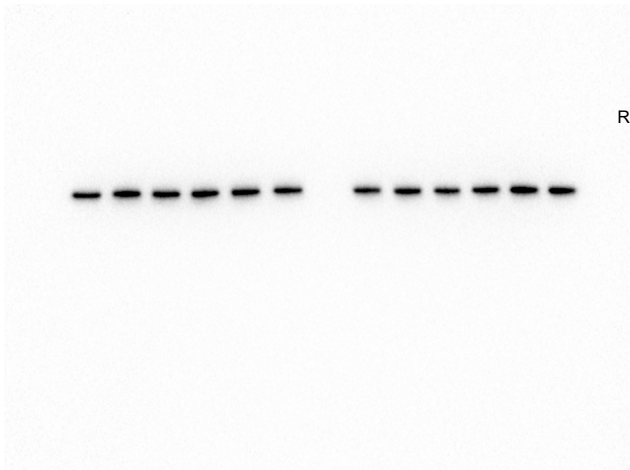


Figure 5D

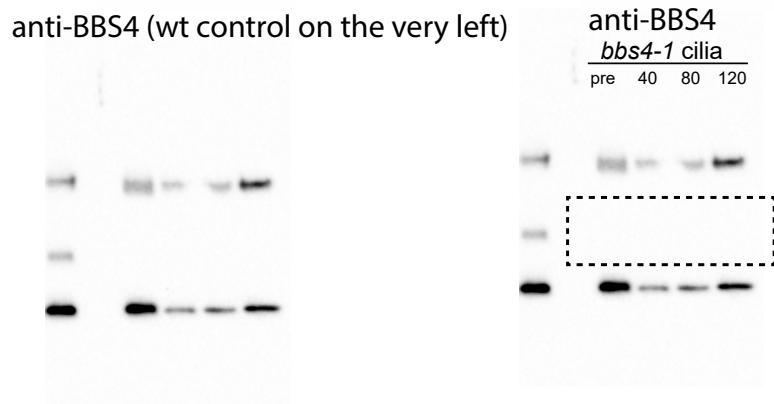
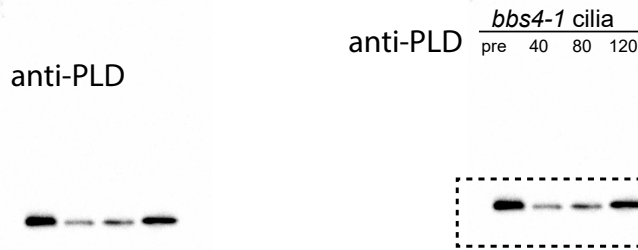
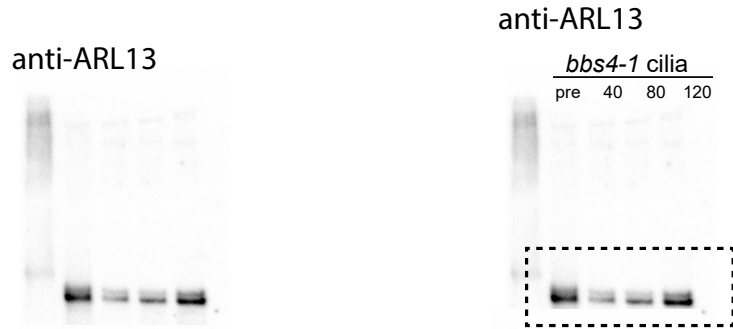
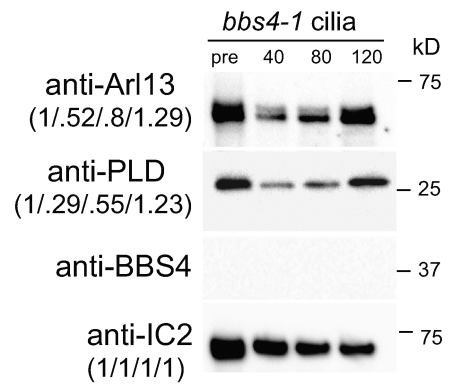
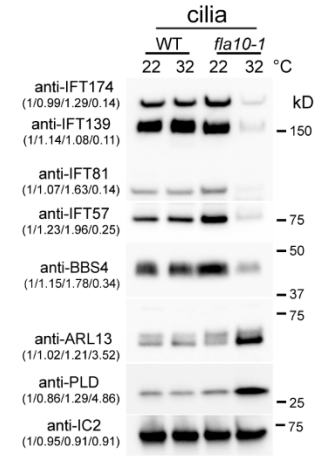
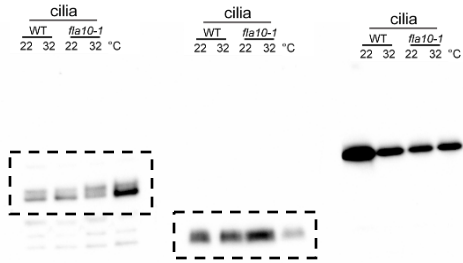
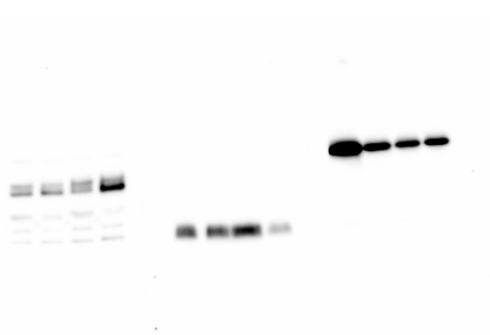


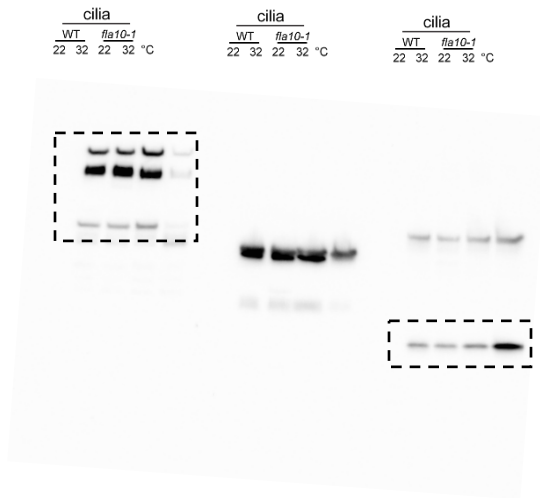
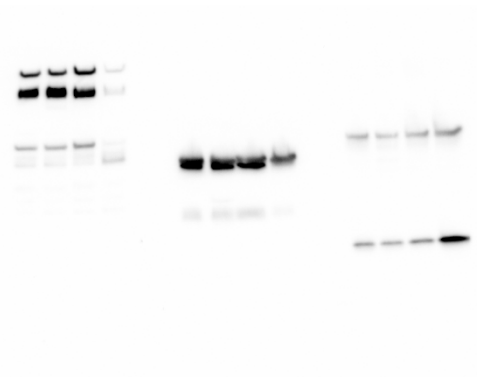
Fig 5E -Source file

(4 samples, 3 replica membranes)

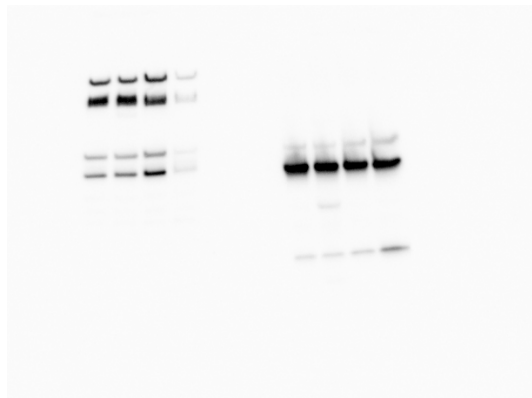
1st Abs: Anti-ARL13 (left) and anti-BBS4 (middle)



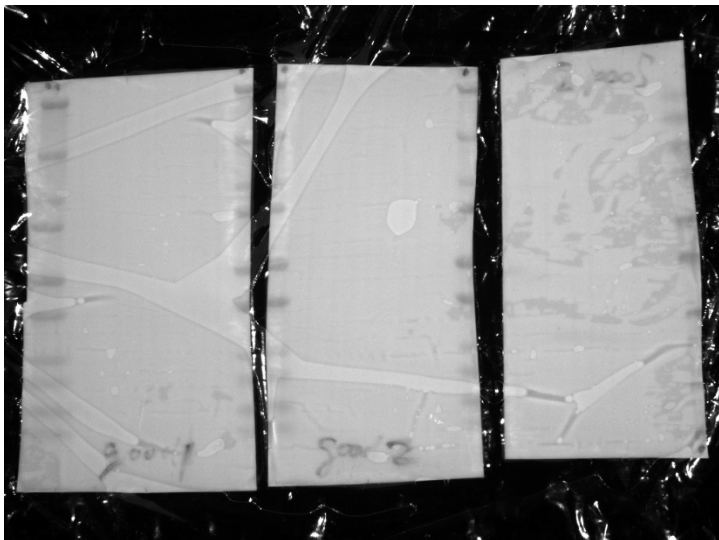
2ndABS: left: anti-IFT174 & anti-IFT139 & anti-IFT81
right: anti-PLD



left: anti-IFT57; right: anti-IC2



colorimetric



Colorimetric/blot overlay

Exp1 Exp2

FL reg FL reg (x Y)

