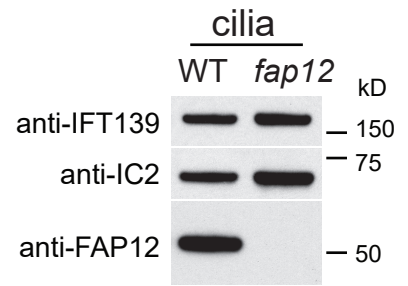


Figure S2C source file

loaded: cilia of control, control, *fap12*, *fap12*



anti-FAP12

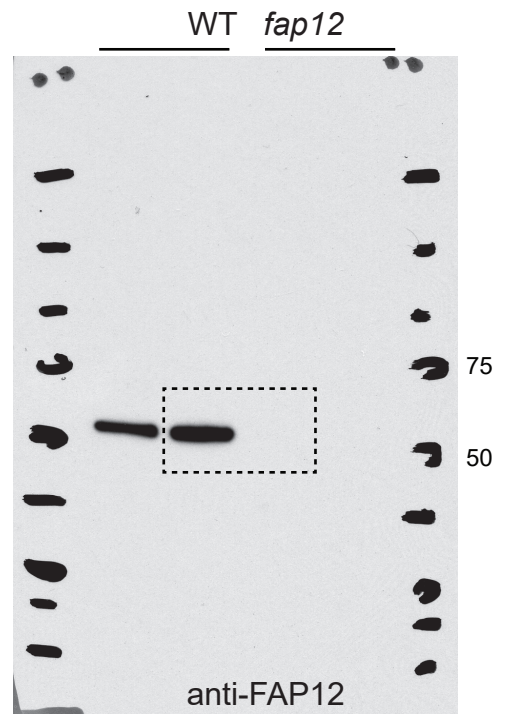
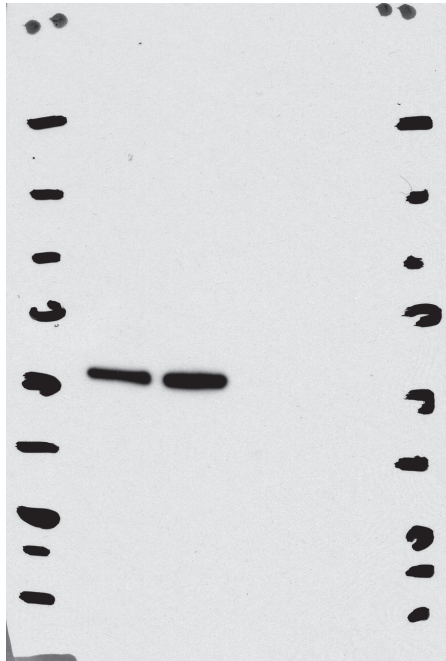


Figure S2E

Loaded:
WT, *arl13*, strain x, strain y

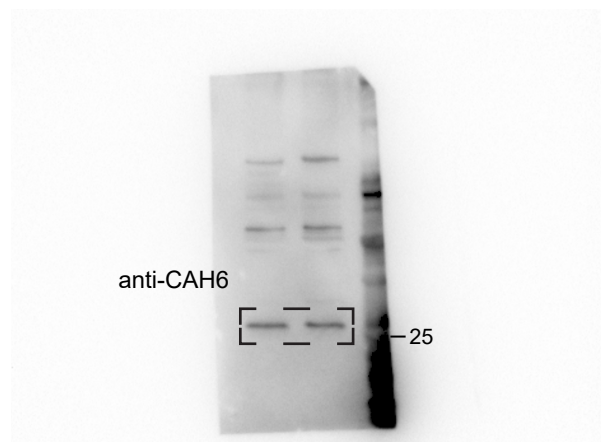
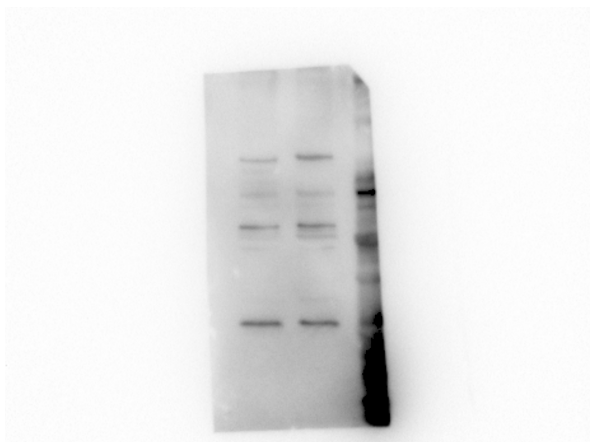
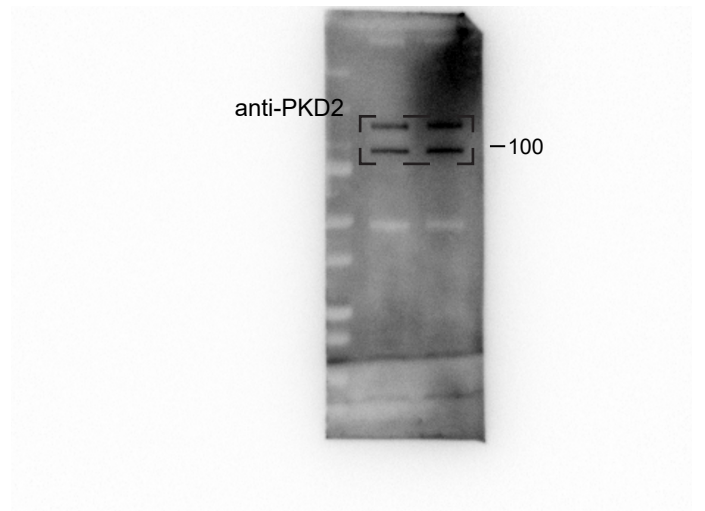
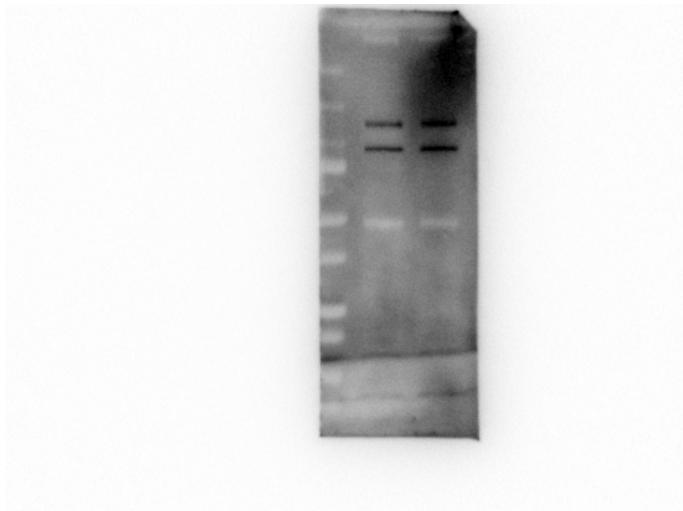
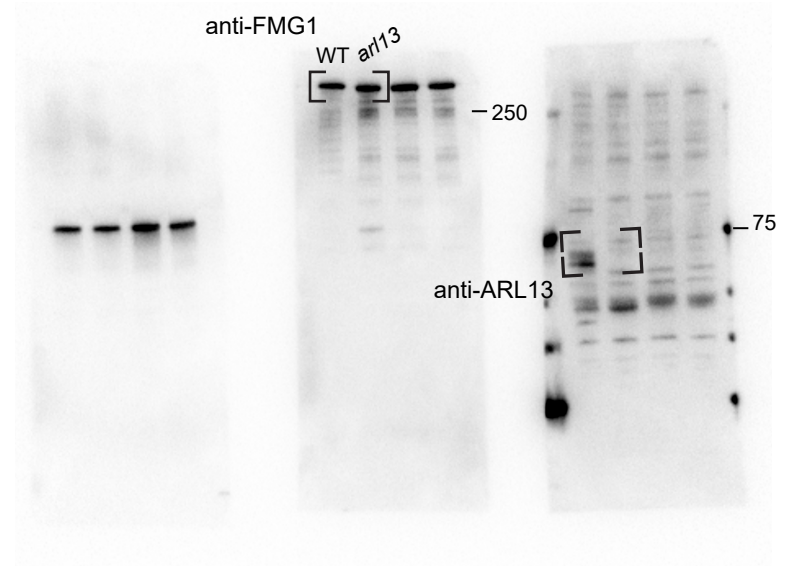
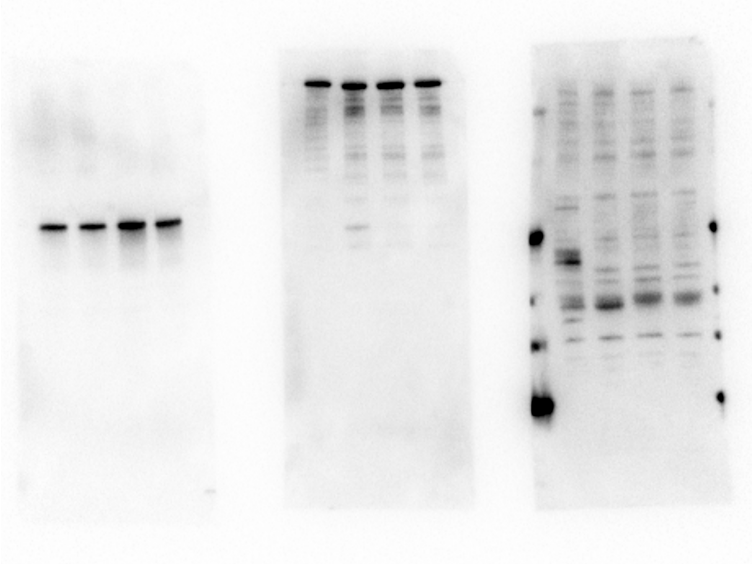
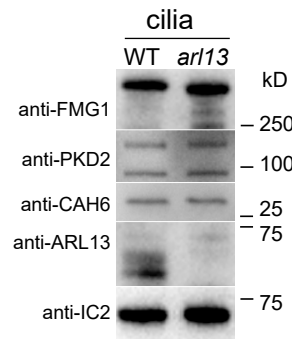


Figure S2E - part 2

Loaded:

WT, *arl13*, strain x, strain y

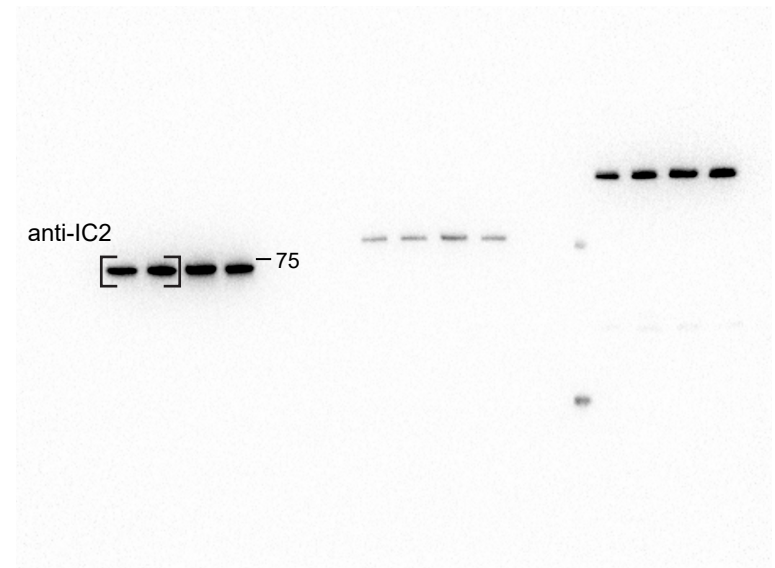
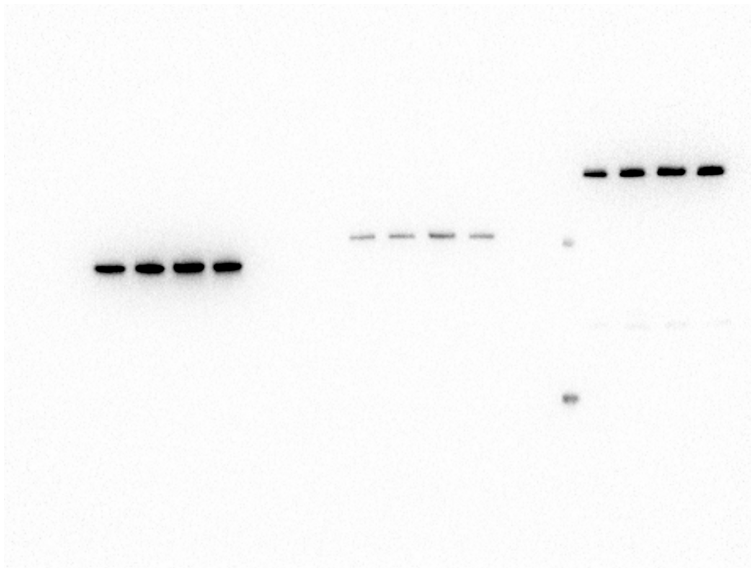
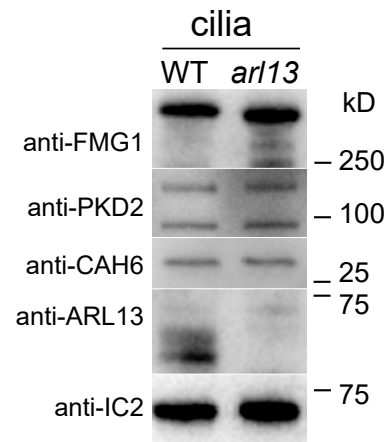


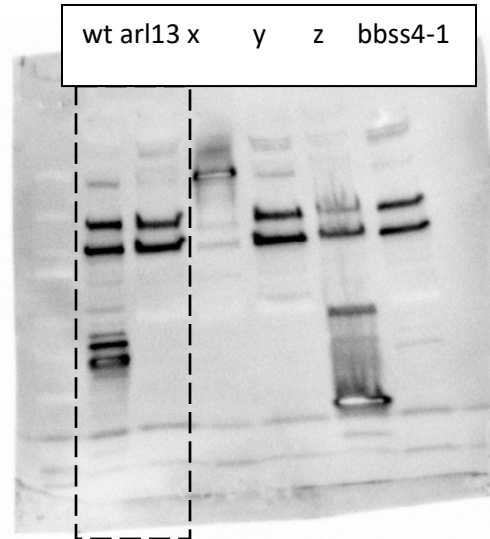
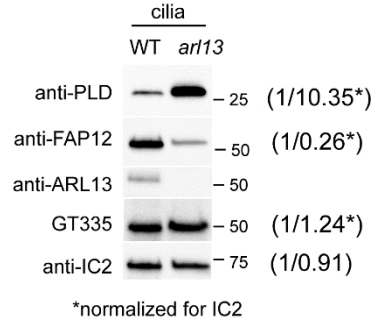
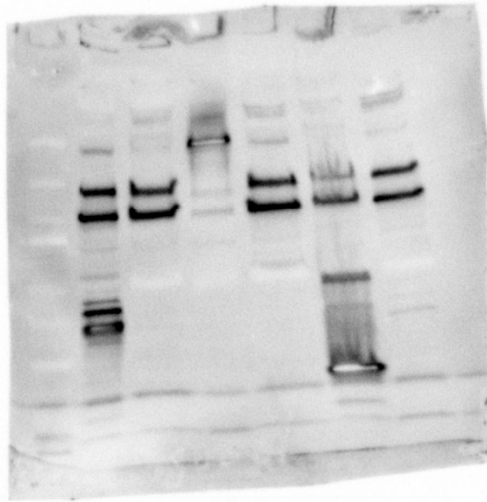
Figure S2F

Loaded:

WT, arl13, strain x, strain y, strain z, bbs4-1

Membrane 1

1st ab: anti-PKD2



2nd ab: anti-GT335

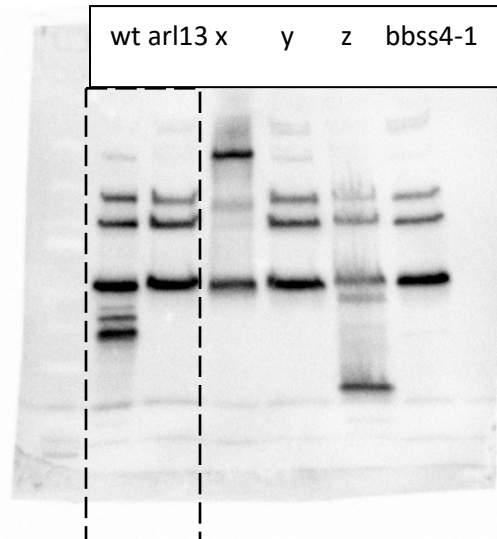
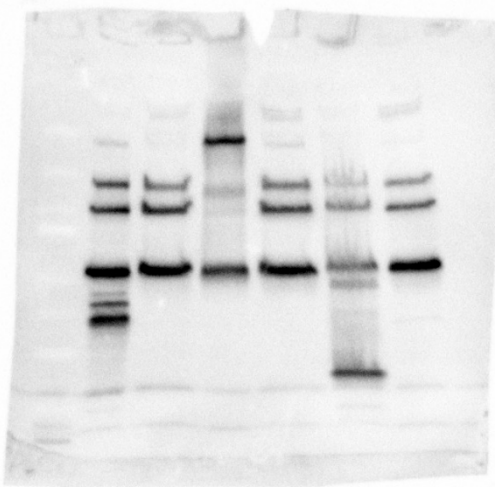
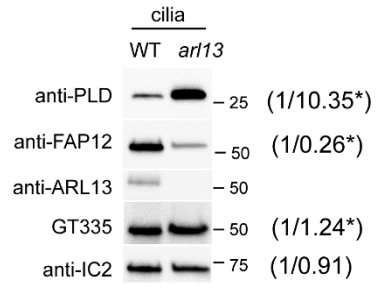


Figure S2F

Membrane 2

1st ab: anti-FAP12

2nd ab: Anti-IC2



*normalized for IC2

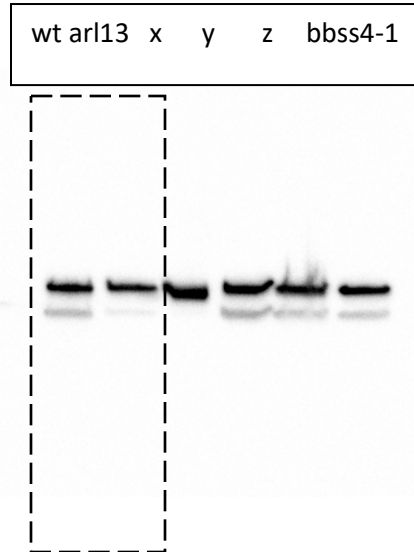
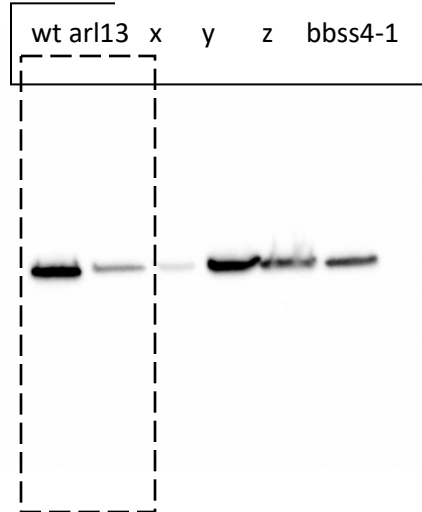
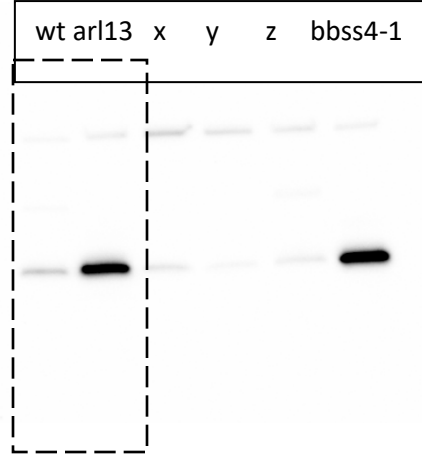
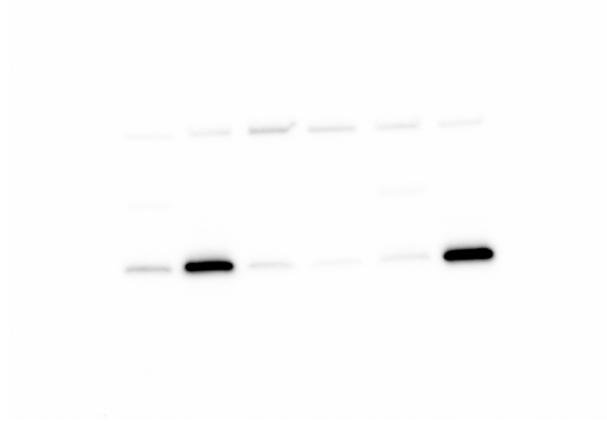
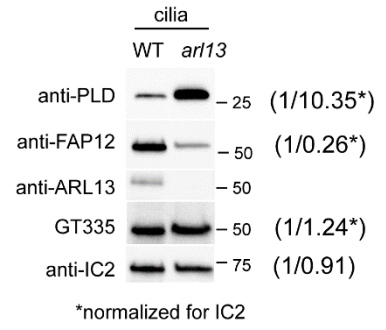


Fig. S2F

Membrane 3

2nd AB: anti-PLD

(1st AB: anti-IFT81 – not shown)



3rd AB: anti-ARL13

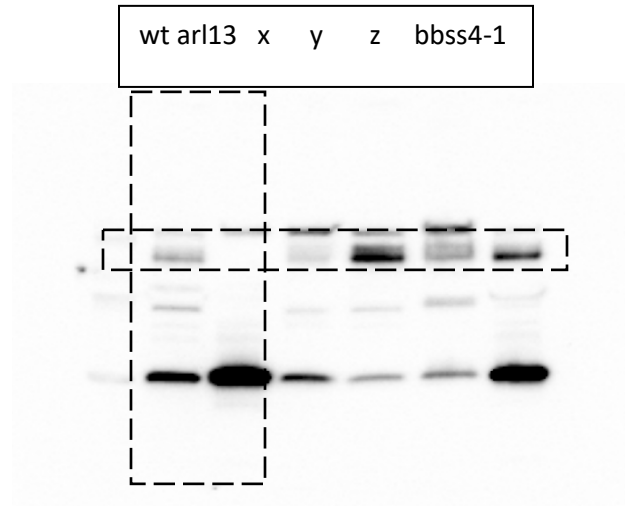
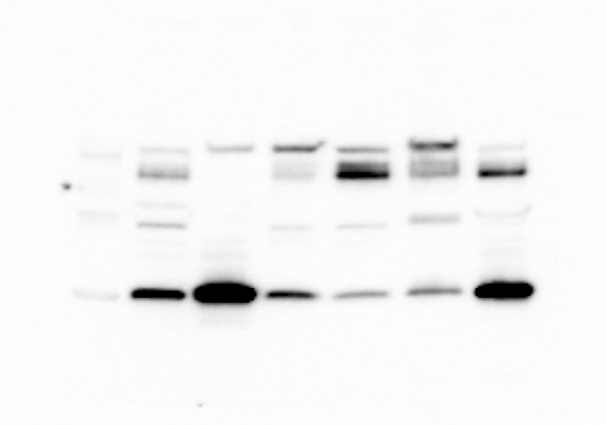


Figure S2G

Loaded:

WT, *arl13*, *bbs4-1*, strain x, strain y

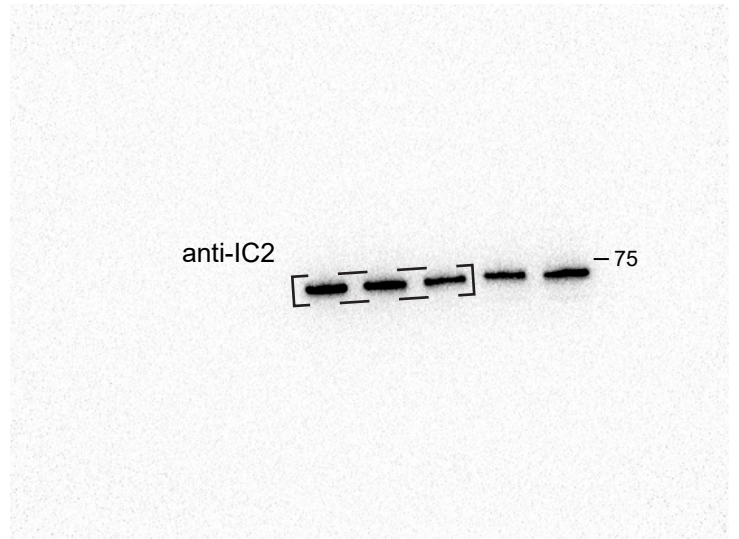
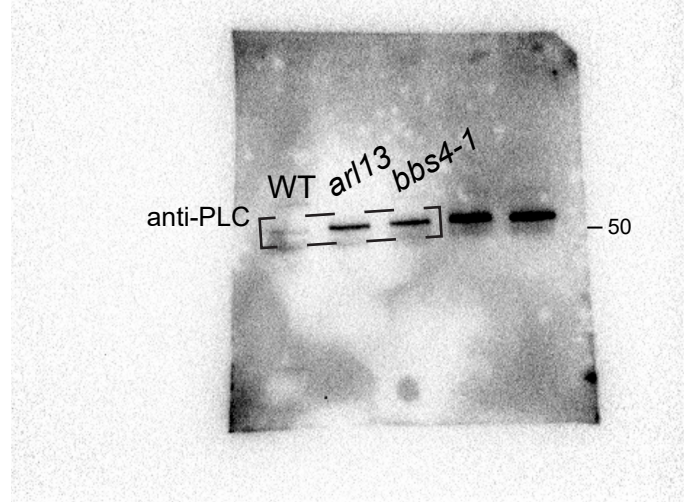
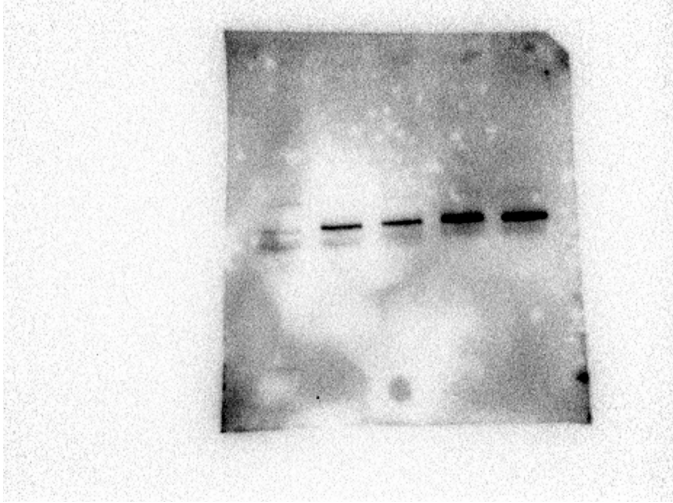
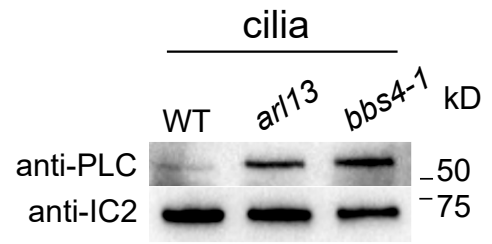


Figure S2H

Loaded:
WT, *arl13*

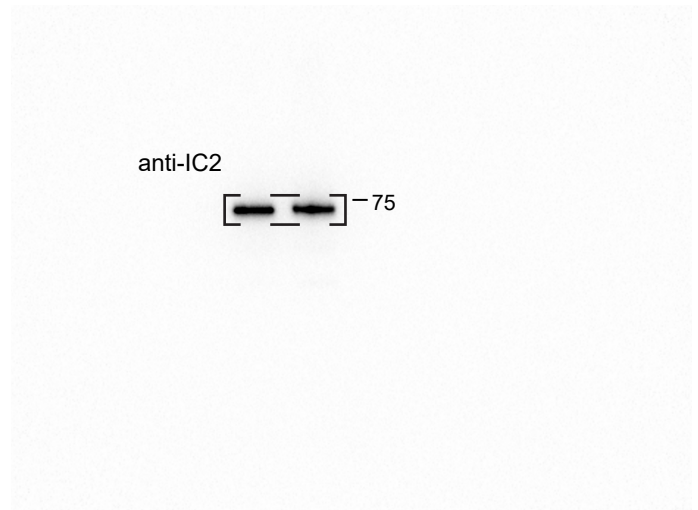
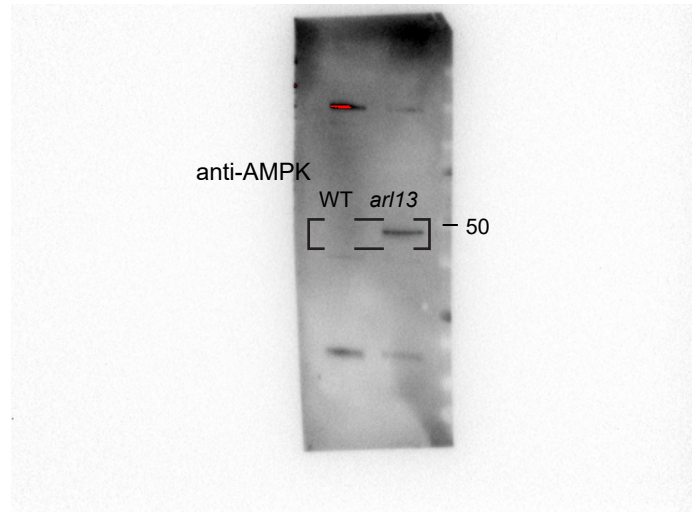
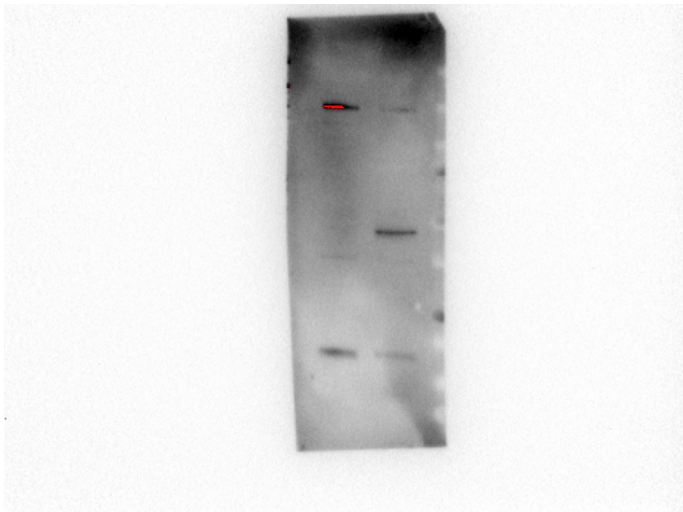
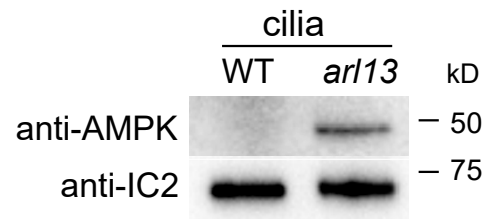


Figure S2I

Loaded:

WT, *bbs4-1 arl13*, *bbs4-1 arl13 ARL13-NG*, *arl13 ARL13-NG*, strain x

