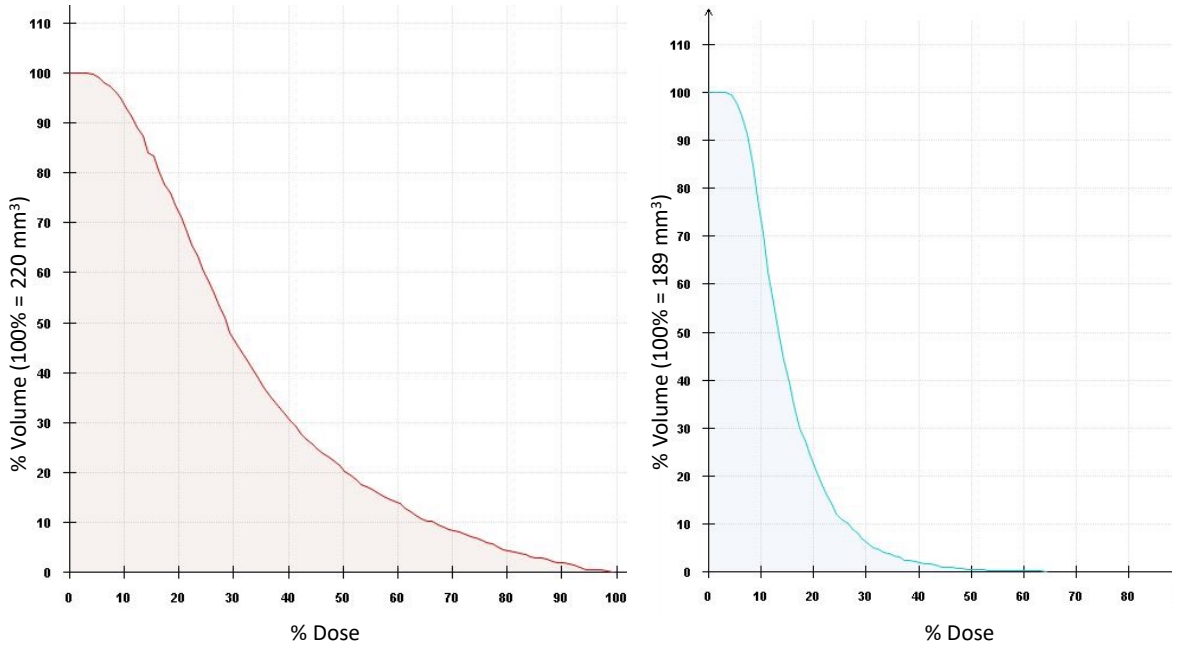
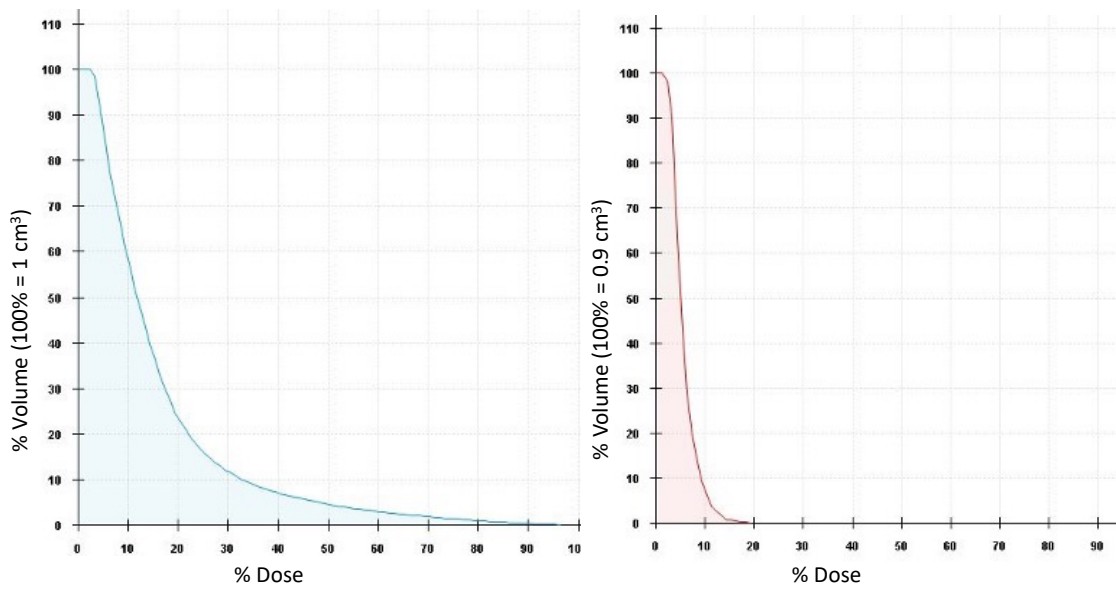


SUPPLEMENTAL FIGURES



Supplemental Figure S1. Dose-volume histograms of ipsilateral (left) and contralateral (right) hemispheres in mice. Maximum dose in the contralateral hemisphere is 65%.



Supplemental Figure S2. Dose-volume histograms of ipsilateral (left) and contralateral (right) hemispheres in rats. Maximum dose in the contralateral hemisphere is 32%.