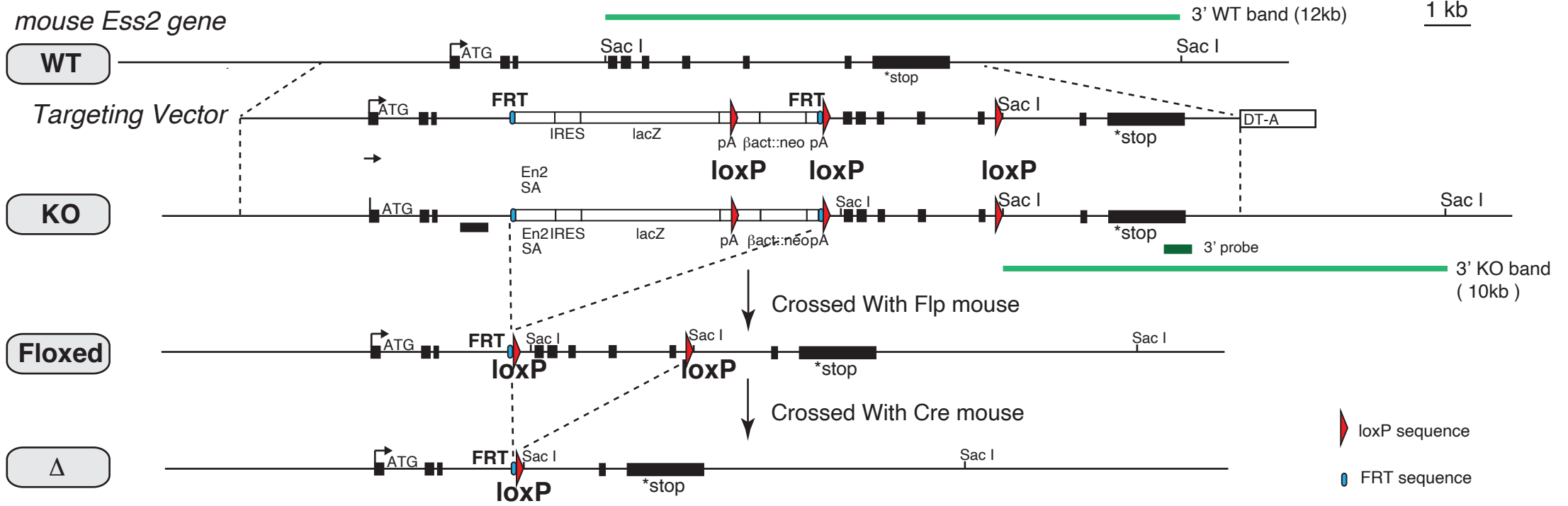
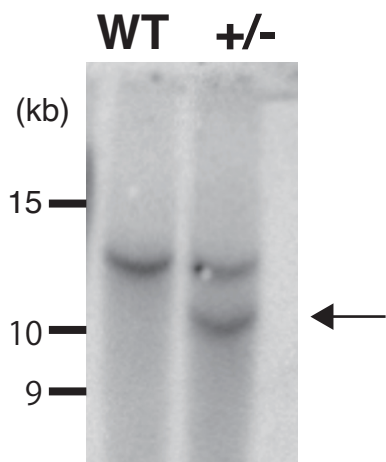


Figure S1

A



B



C

WT	+/-	-/-
9	23	0

Figure S1.

A, Map of the *Ess2* targeting vector and strategy for generating knockout and floxed mice on *Ess2*.

B, Southern blotting by *Ess2* 3' probe. 3' KO band is only shown in the *Ess2*^{+/-} mouse (arrow).

C, Result of mating between *Ess2*^{+/-} mice. No *Ess2*^{-/-} mice were born. Number of crosses is 6 and the average number of pups were 5.