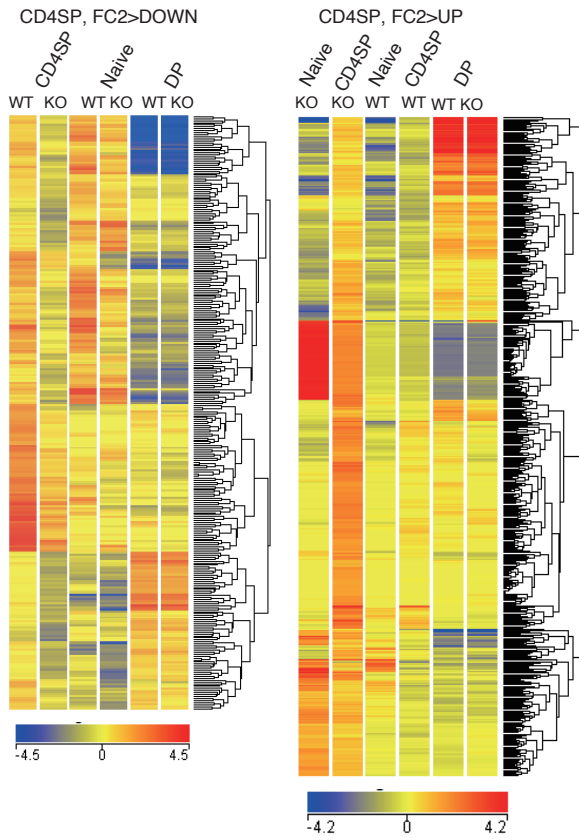


## Figure S4

**A**



**B**

Gene	Value		Fold_change (log2)	q_value
	<i>Ess2<sup>fl/fl</sup></i>	<i>Ess2<sup>ΔCD4/ΔCD4</sup></i>		
<i>CD4SP</i>				
<i>Cxcr3</i>	2.72	0.59	-2.19	0.020
<i>Cxcr6</i>	7.90	1.94	-2.02	8.E-03
<i>Ctla4</i>	19.41	11.07	-0.81	9.E-04
<i>Cd3g</i>	292.38	181.90	-0.68	9.E-04
<i>Il7r</i>	52.56	37.09	-0.50	9.E-04
<i>Ldha</i>	123.60	86.93	-0.51	9.E-04
<i>Naive</i>				
<i>Il7r</i>	25.95	19.50	-0.41	0.015
<i>Ahnak</i>	2.49	0.96	-1.37	5.E-05
<i>Ctla4</i>	5.73	2.75	-1.06	6.E-03
<i>Junb</i>	259.88	165.12	-0.65	6.E-04
<i>Cd3g</i>	87.82	56.03	-0.65	6.E-04
<i>Ikbkb</i>	10.00	7.59	-0.40	0.046

Figure S4.

A, Heatmap of genes with over a two-fold change (FC) expression in CD4SP thymocytes from *Ess2<sup>fl/fl</sup>* and *Ess2<sup>ΔCD4/ΔCD4</sup>* mice.

B, Representative scores of a cuffdiff analysis of CD4SP-thymocyte- and naïve-Tcell-related genes. 3 mice were used in each experiment.