

Supplementary Figures

Fig. S1

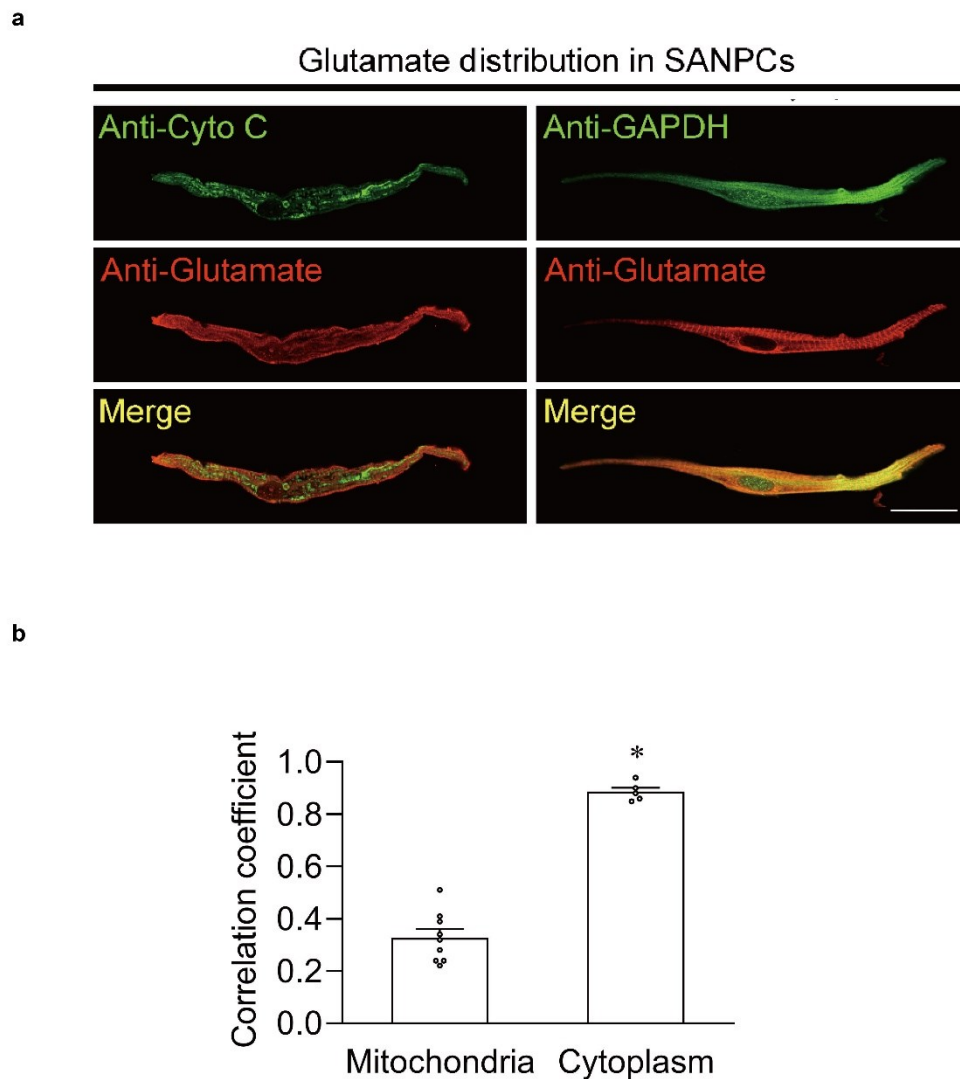


Fig. S1. Glutamate was more present in the cytoplasm than in the mitochondria in rat SANPCs.

a Immunofluorescence staining with anti-glutamate, anti-Cytochrome C (mitochondrial marker) and anti-GAPDH (cytoplasmic marker) antibodies in isolated SANPCs. Scale bar = 20 μm . **b** Quantification of the colocalization of glutamate with Cytochrome C or GAPDH (n = 5-9 per group; * $p < 0.05$, p values were calculated by unpaired Student's t -test). Cyto C, cytochrome C.