

Fig. S2

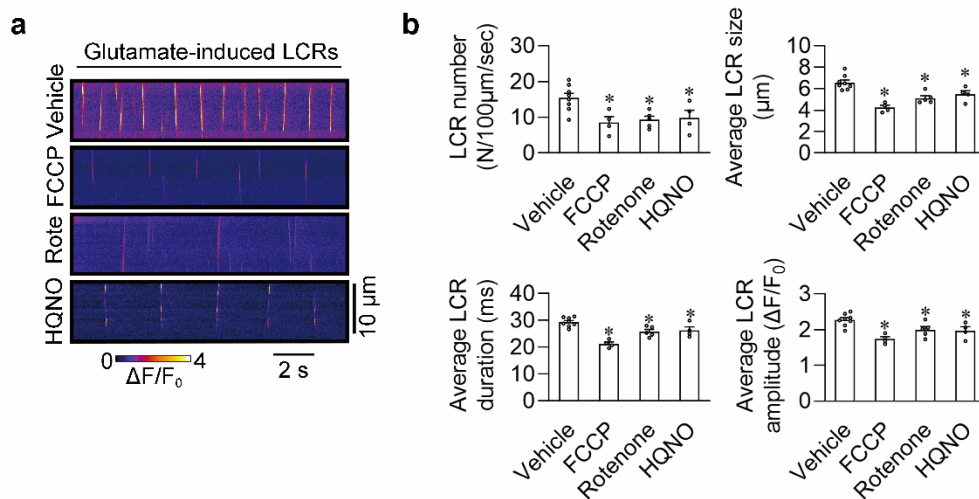


Fig. S2. Glutamate-induced mitochondrial ROS increase mediated the LCR enhancement in rat SANPCs.

a Representative confocal line-scan images of LCR events in 5 mM glutamate-treated, permeabilized SANPCs treated with vehicle or 10 μ M FCCP, 10 μ M Rotenone or 10 μ M HQNO. **b** Pooled data from **a** (n = 4-8 cells per group, cells were isolated from at least 4 rats; * $p < 0.05$, p values were calculated by one-way ANOVA with Dunnett post-hoc test). Rote, Rotenone.