

## Genetic mapping of QTLs for drought tolerance in chickpea (*Cicer arietinum* L.)

Ashutosh Kushwah<sup>1</sup>, Dharminder Bhatia<sup>1</sup>, Rutwik Barmukh<sup>2</sup>, Inderjit Singh<sup>1</sup>, Gurpreet Singh<sup>3</sup>, Shayla Bindra<sup>1</sup>, Suruchi Vij<sup>1</sup>, Bharadwaj Chellapilla<sup>4</sup>, Aditya Pratap<sup>5</sup>, Manish Roorkiwal<sup>2,#</sup>, Shiv Kumar<sup>6</sup>, Rajeev K. Varshney<sup>2,7\*</sup>, Sarvjeet Singh<sup>1\*</sup>

<sup>1</sup>Department of Plant Breeding & Genetics, Punjab Agricultural University, Ludhiana, Punjab, India-141004

<sup>2</sup>Center of Excellence in Genomics and Systems Biology, International Crops Research Institute for the Semi-Arid Tropics (ICRISAT), Hyderabad, India

<sup>3</sup>Regional Research Station, Punjab Agricultural University, Faridkot, India

<sup>4</sup>Division of Genetics, ICAR-Indian Agricultural Research Institute, New Delhi, India

<sup>5</sup>Crop Improvement Division, ICAR- Indian Institute of Pulses Research, Kanpur, India

<sup>6</sup>International Center for Agricultural Research in the Dry Areas (ICARDA), Rabat Office, Rabat, Morocco

<sup>7</sup>Murdoch's Centre for Crop & Food Innovation, State Agricultural Biotechnology Centre, Food Futures Institute, Murdoch University, Murdoch, Western Australia, Australia

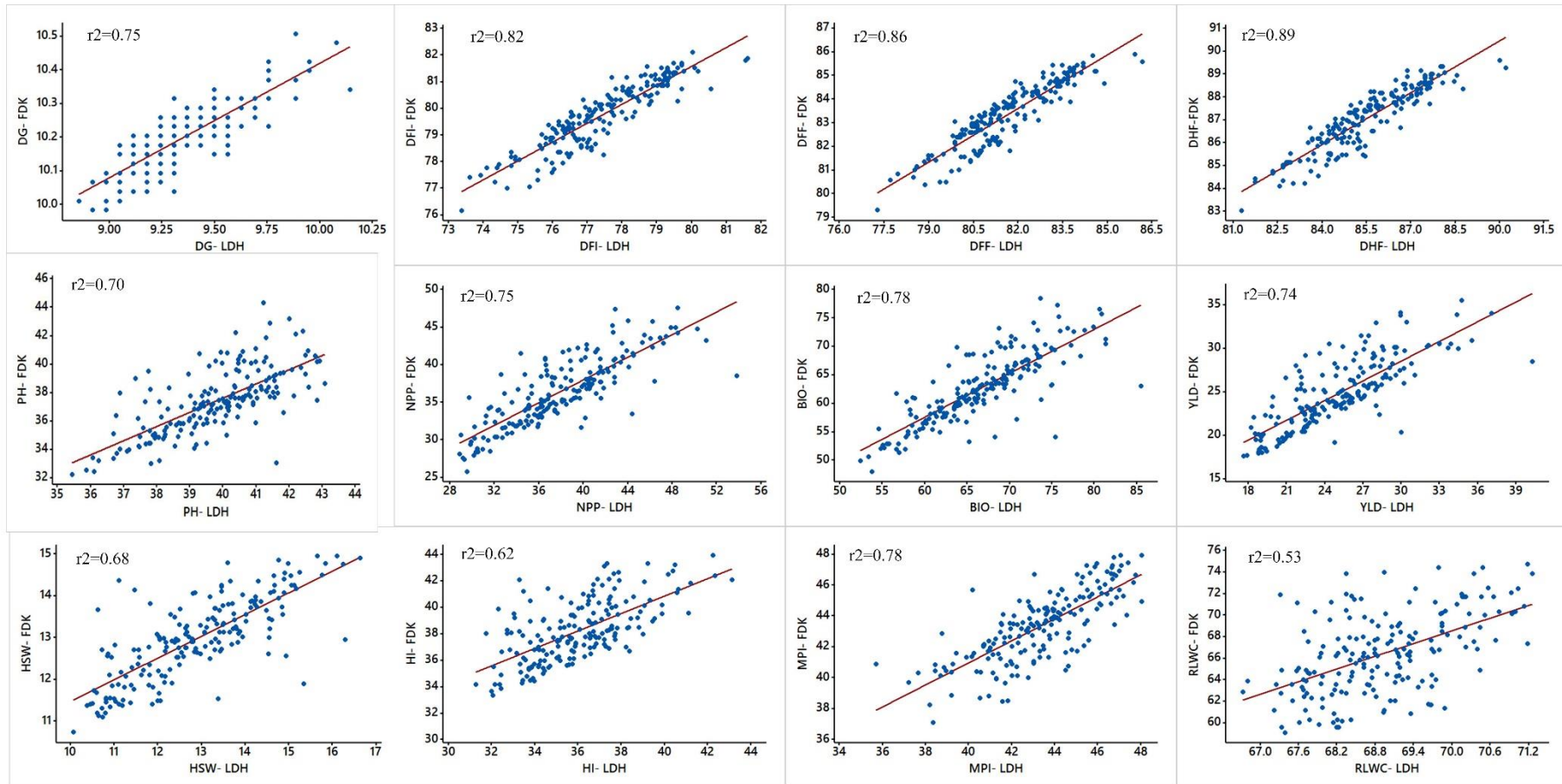
<sup>#</sup>Present address: Khalifa Center for Genetic Engineering and Biotechnology, United Arab Emirates University, Al-Ain, United Arab Emirates

\*Correspondence:

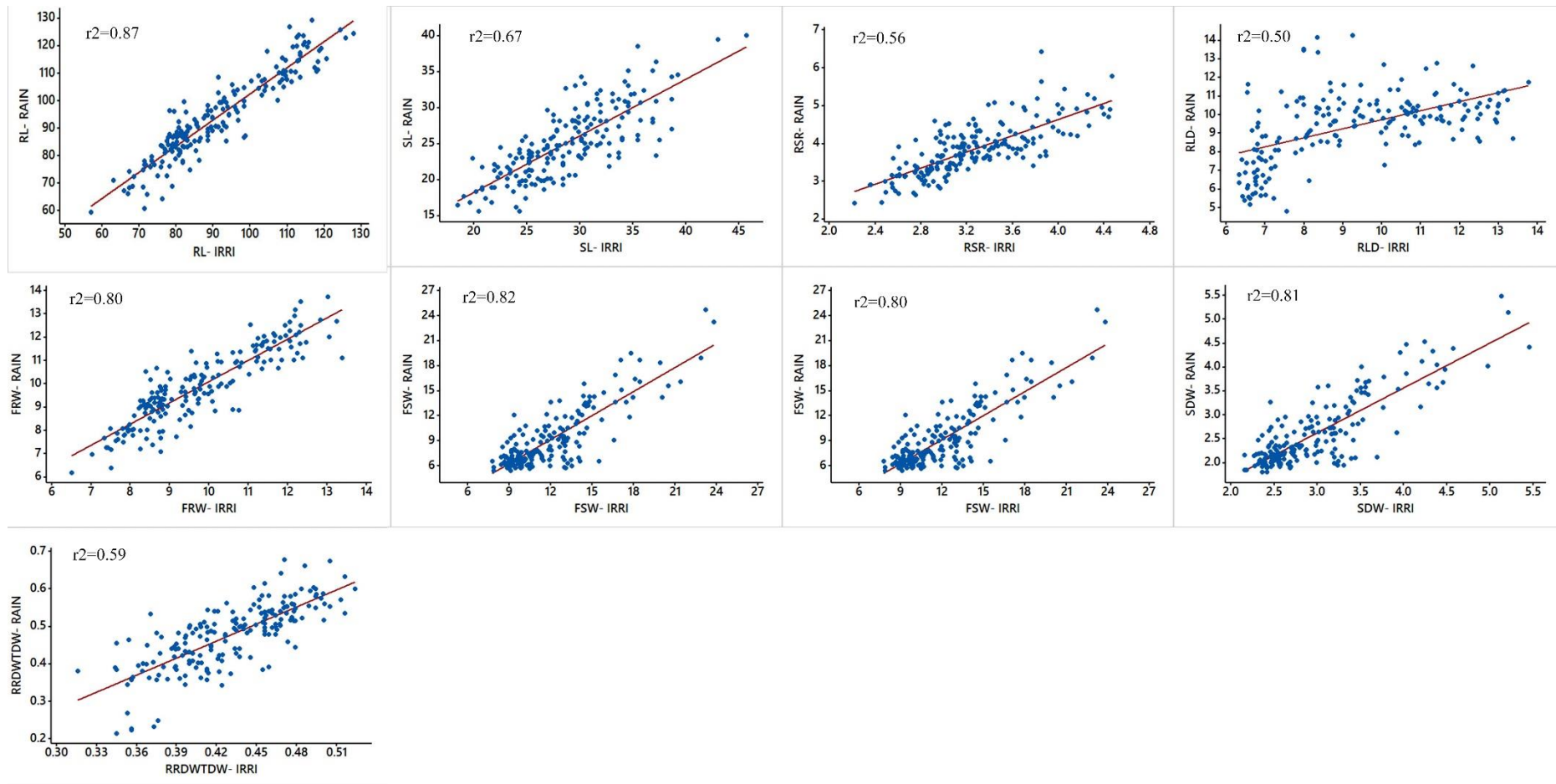
[rajeev.varshney@murdoch.edu.au](mailto:rajeev.varshney@murdoch.edu.au) (Rajeev K. Varshney);

[sarvjeet62@pau.edu](mailto:sarvjeet62@pau.edu) (Sarvjeet Singh)

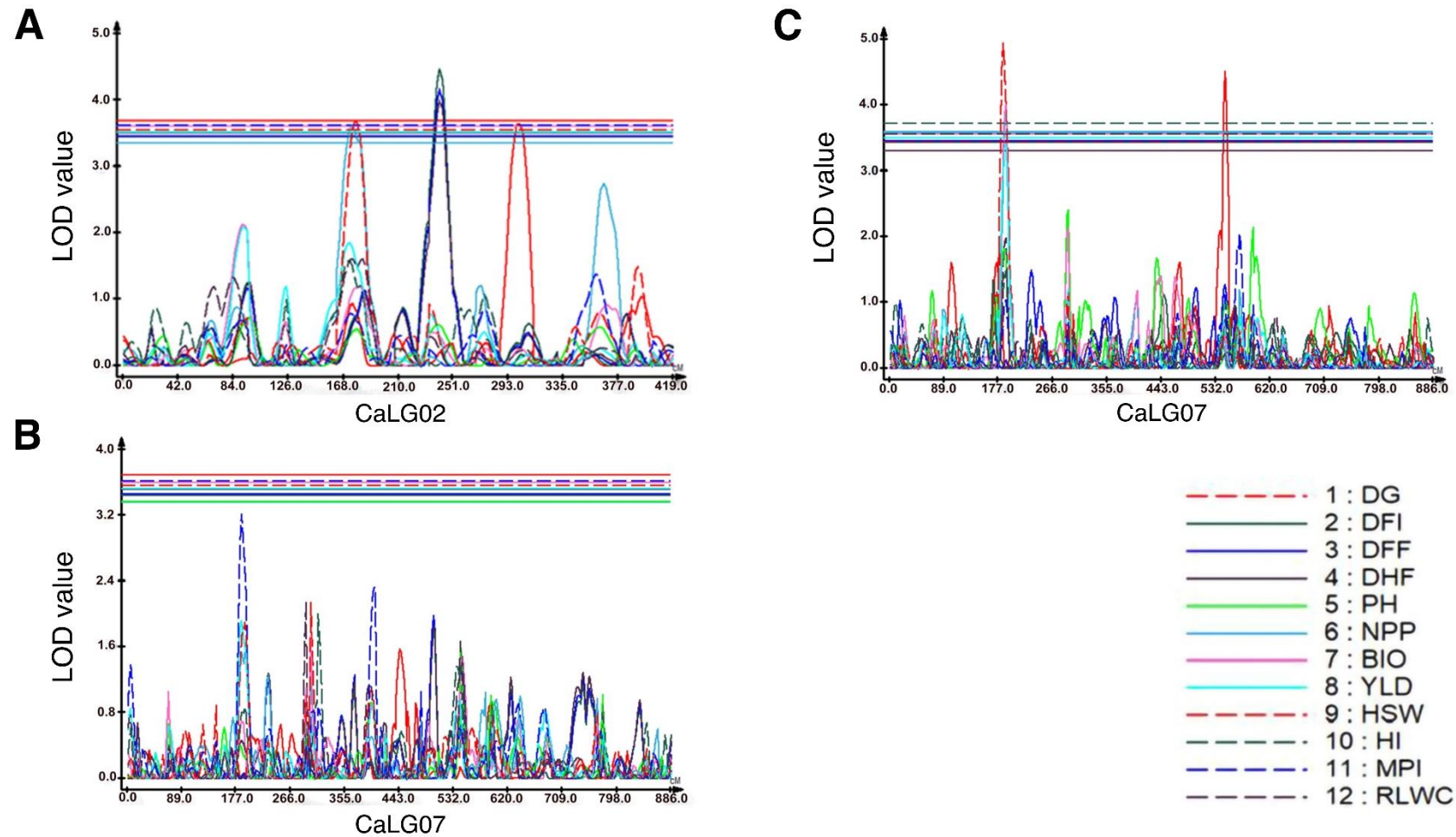
## Supplementary Figures



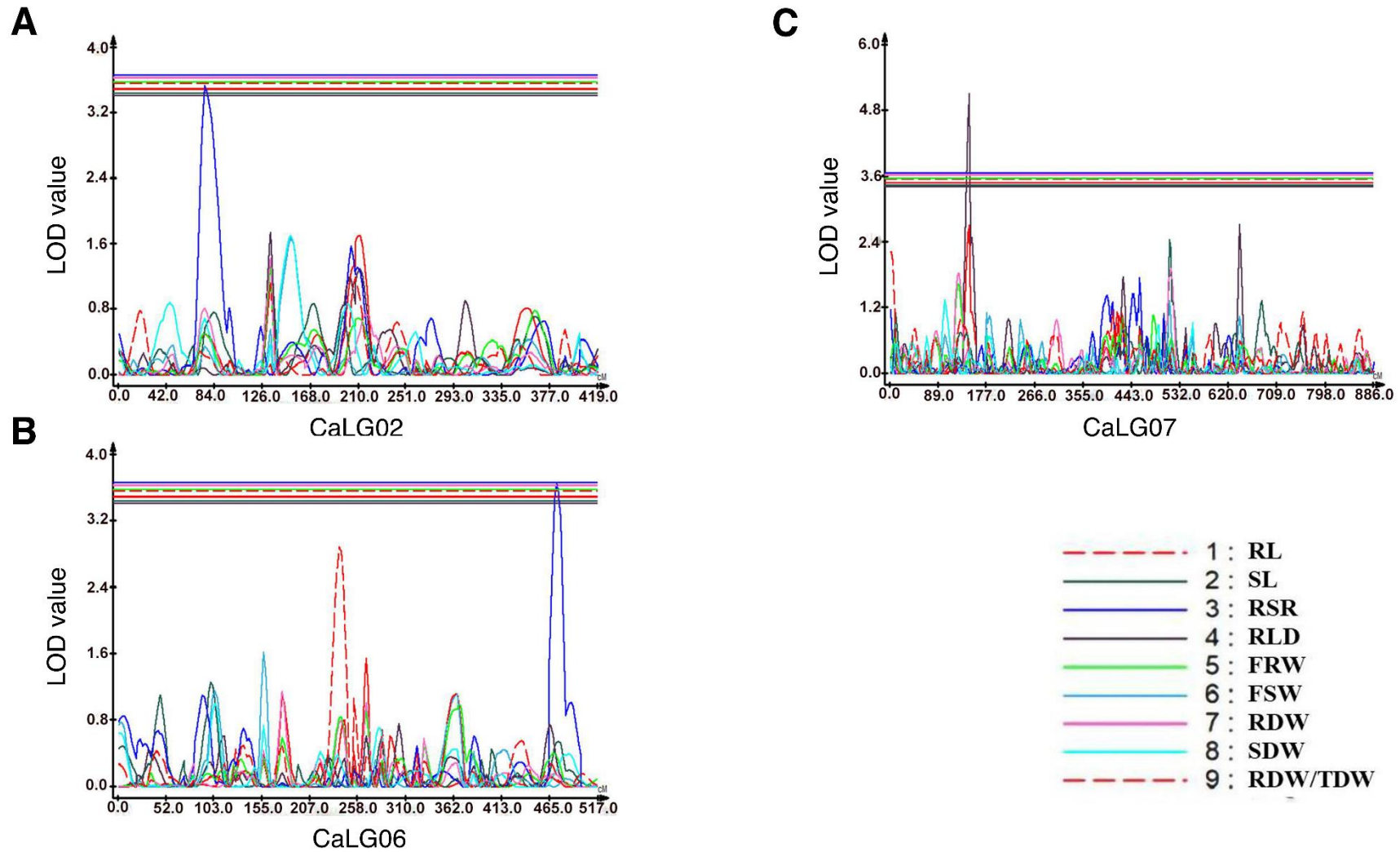
**Supplementary Figure S1:** The scatter plots of drought tolerance related traits showing relationship between Ludhiana and Faridkot locations. FDK, Faridkot; LDH, Ludhiana.



**Supplementary Figure S2:** The scatter plots of root-related traits showing relationship between Ludhiana and Faridkot locations. FDK, Faridkot; LDH, Ludhiana.



**Supplementary Figure S3:** Genomic regions with QTLs for morphological and physiological traits. For traits evaluated at Faridkot. (A) QTLs for days to germination (DG), days to flowering initiation (DFI), days to 50% flowering (DFF), days to 100% flowering (DHF), Number of pod per plant (NPP), and 100-seed weight (HSW) were mapped on CaLG02; while (B) QTL for membrane permeability index (MPI) was mapped on CaLG07. (C) QTLs for days to germination (DG), Number of pod per plant (NPP), biomass per plant (BIO), yield per plant (YLD), and 100-seed weight (HSW) were mapped on CaLG07 for Ludhiana.



**Supplementary Figure S4:** Genomic regions with QTLs for root-related traits. QTLs for root-shoot ratio (RSR) mapped on (A) CaLG02 and (B) CaLG06. (C) QTL for root length density (RLD) mapped on CaLG07.