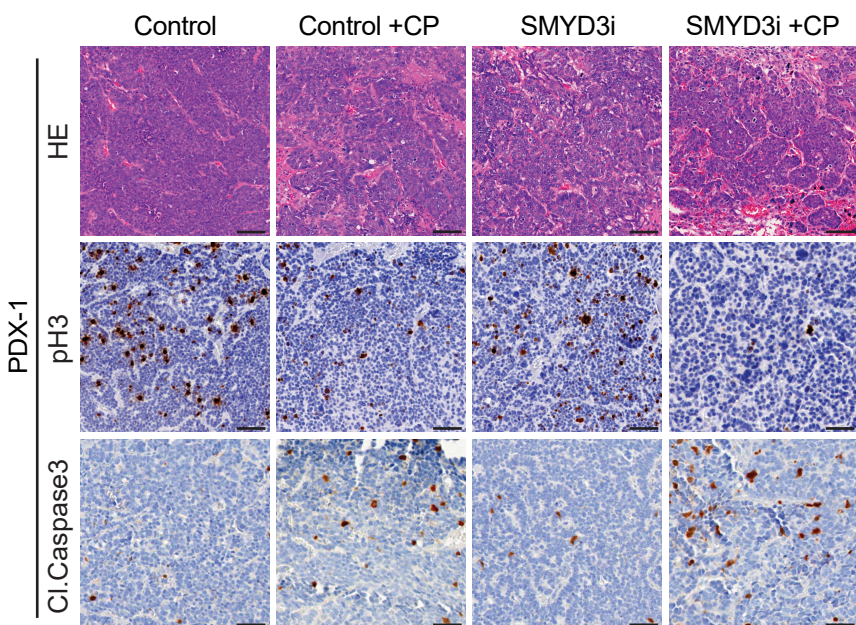
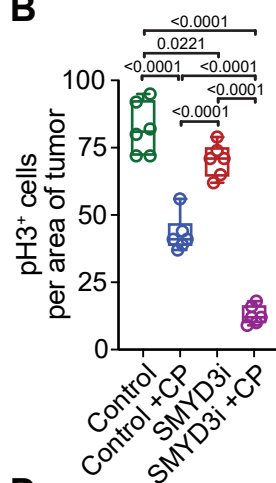


Supplementary Figure 8

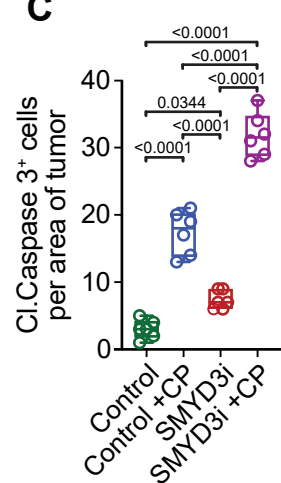
A



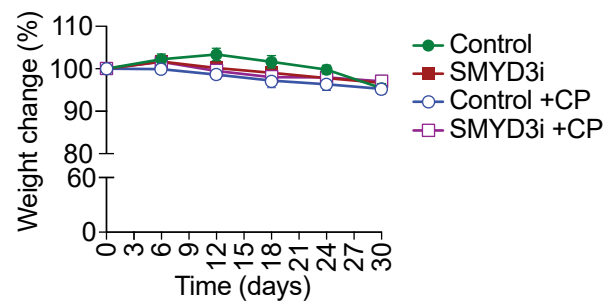
B



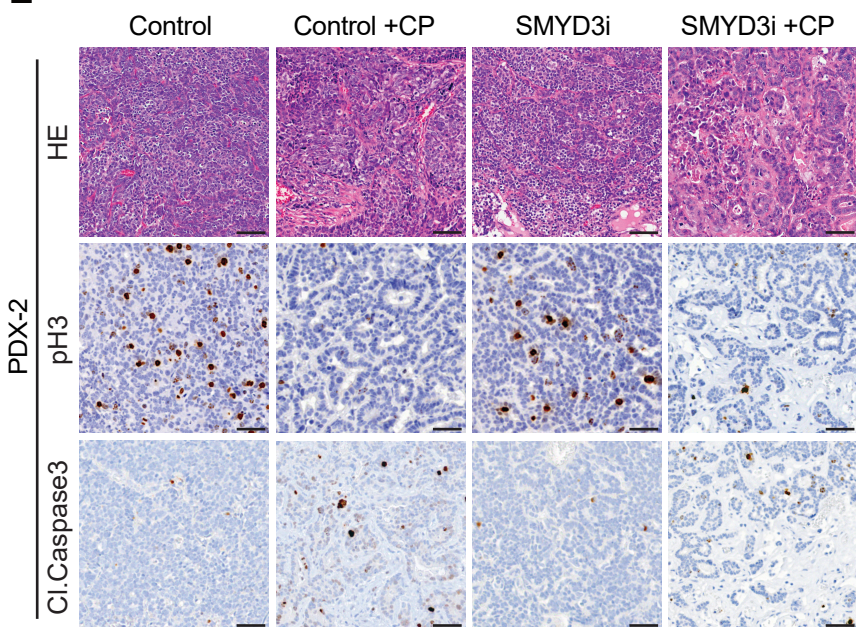
C



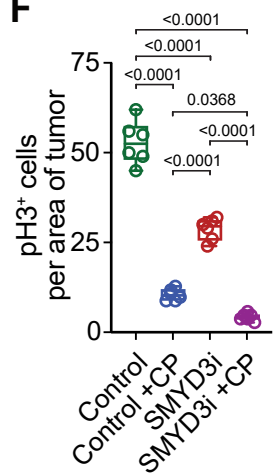
D



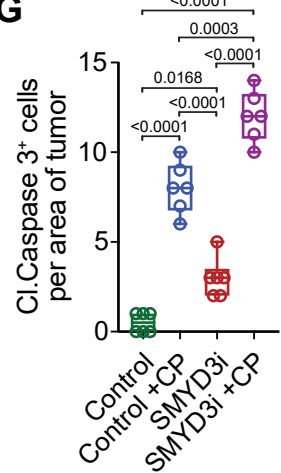
E



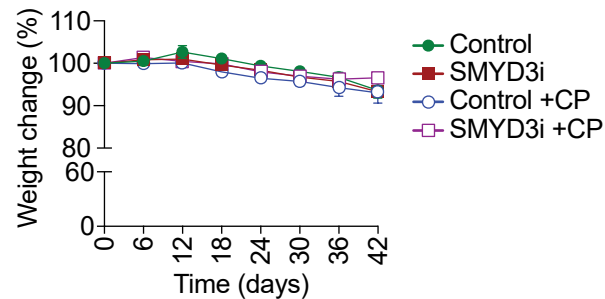
F



G



H



Supplementary Figure S8. SMYD3 inhibition sensitizes SCLC PDX to alkylating agents.

A, Representative H&E and IHC staining for cell proliferation marker phospho-histone 3 (pH3) and apoptosis maker cleaved Caspase 3 (cl. Caspase 3) in biopsies collected from therapy naïve SCLC patient derived xenografts (PDX-1) treated with SMYD3 inhibitor EPZ031686 (SMYD3i) and cyclophosphamide (CP). Representative of n = 6 mice for each experimental group. Scale bars, 50 µm. **B-C**, Quantification of phospho-Histone 3 (pH3) (B) and cleaved Caspase 3 (cl. Caspase 3) positive cells (C) in PDX samples as in (A). Boxes represent 25th to 75th percentile, whiskers: min. to max., center line: median; *P-value* were calculated by two-way ANOVA with Tukey's testing for multiple comparisons. **D**, Weight analysis over time of mouse groups from the PDX-1 study. **E**, Representative H&E and IHC staining for cell proliferation marker phospho-histone 3 (pH3) and apoptosis maker cleaved Caspase 3 (cl. Caspase 3) in biopsies collected from chemotherapy (Carboplatin and Etoposide) relapsed SCLC patient-derived xenografts (PDX-2) treated with SMYD3 inhibitor EPZ031686 (SMYD3i) and cyclophosphamide (CP). Representative of n = 6 mice for each experimental group. Scale bars, 50 µm. **F-G**, Quantification of phospho-Histone 3 (pH3) (F) and cleaved Caspase 3 (cl. Caspase 3) positive cells (G) in PDX samples as in (E). Boxes represent 25th to 75th percentile, whiskers: min. to max., center line: median; *P-value* were calculated by two-way ANOVA with Tukey's testing for multiple comparisons. **H**, Weight analysis over time of mouse groups from the PDX-2 study.