

Supplementary Table 1. Multivariable logistic regression model for 1-year all-cause death

Variables	P value	OR	95% CI
Age	<0.0001	1.058	1.026-1.092
SLEDAI > 10	0.639	1.323	0.411-4.262
Pulmonary hypertension	0.182	2.350	0.671-8.230
Platelet count <100X10 <sup>9</sup> /L	0.146	2.040	0.779-5.340
Serum creatinine > 104 µmol/L	0.059	2.693	0.962-7.536
<b>Infection</b>	<b>&lt;0.0001</b>	<b>22.083</b>	<b>6.752-72.228</b>

SLEDAI: Systemic Lupus Erythematosus Disease Activity Index.

Supplementary Table 2. Sites of infection and isolated microorganisms

Site	Number	Organism
<b>Definitive diagnosis</b>		
<b>Pulmonary</b>	<b>12</b>	<u>Organism isolated from BALF</u> : <i>Pneumocystis jirovecii</i> (3), <i>Aspergillus</i> (1), <i>Candida albicans</i> (1), <i>Nocardia</i> (1), <i>Staphylococcus</i> (1), <i>Enterococcus</i> + <i>Aspergillus</i> (1), <i>Staphylococcus</i> + <i>Candida albicans</i> (1), <i>Staphylococcus</i> + <i>Aspergillus</i> (1), <i>Streptococcus</i> + <i>Neisseria sicca</i> + <i>Aspergillus</i> (1), <i>Psuedomonas aeruginosa</i> + <i>Acinetobacter baumannii</i> + <i>Klebsiella pneumoniae</i> + <i>Enterobacter sp.</i> (1),
<b>Bacteraemia</b>	<b>6</b>	<i>Streptococcus</i> (2), <i>Staphylococcus</i> (1), <i>Enterococcus</i> (1), <i>Psuedomonas aeruginosa</i> + <i>Nocardia</i> (1), <i>Staphylococcus</i> + <i>Klebsiella pneumoniae</i> (1)
<b>Skin and soft-tissue</b>	<b>7</b>	<i>Herpes zoster</i> (7)
<b>Serous cavity</b>	<b>4</b>	<i>Mycobacterium tuberculosis</i> (2), <i>Nocardia</i> (1), <i>Klebsiella pneumoniae</i> (1)
<b>Systemic (viral)</b>	<b>2</b>	<i>Cytomegalovirus</i> (1), <i>Cytomegalovirus</i> + <i>Epstein-Barr virus</i> (1)
<b>Multiple infection</b>		
Bacteraemia+ Pulmonary	9	<i>Klebsiella pneumoniae</i> + <i>Enterococcus</i> + <i>Candida albicans</i> (BALF) (1), <i>Listeria monocytogenes</i> + <i>Candida glabrata</i> (sputum) (1), <i>Micrococcus luteus</i> + <i>Aspergillus</i> (sputum) (1), <i>Staphylococcus</i> + <i>Aspergillus</i> (BALF) (1), <i>Staphylococcus</i> + <i>Aspergillus</i> (sputum) (1), <i>Staphylococcus</i> + <i>Haemophilus influenzae</i> (BALF)+ <i>Candida albicans</i> (BALF) (1), <i>Staphylococcus</i> + <i>Aspergillus</i> (sputum)+ <i>Enterococcus faecium</i> (sputum) (1), <i>Staphylococcus</i> + <i>Psuedomonas aeruginosa</i> (sputum) (1), <i>Streptococcus</i> + <i>Streptococcus</i> (sputum) (1)
Bacteraemia+CNS	2	<i>Salmonella</i> + <i>Salmonella</i> (1), <i>Psuedomonas aeruginosa</i> + <i>Psuedomonas aeruginosa</i> (1)
Bacteraemia+Urinary	1	<i>Staphylococcus</i> + <i>Staphylococcus</i> (1)
Pulmonary+ Systemic (viral)	1	Unidentified + <i>Cytomegalovirus</i> (1)
<b>Clinical diagnosis</b>		
<b>Pulmonary</b>	<b>9</b>	Unidentified
	<b>15</b>	<u>Organism isolated from sputum</u> : <i>Aspergillus</i> (4), <i>Acinetobacter baumannii</i> (1), <i>Enterobacter sp.</i> (1), <i>Aspergillus</i> + <i>Candida albicans</i> (1), <i>Enterobacter sp.</i> + <i>Candida albicans</i> (1), <i>Klebsiella pneumoniae</i> + <i>Enterobacter sp.</i> (1), <i>Psuedomonas aeruginosa</i> + <i>Candida albicans</i> (1), <i>Streptococcus</i> + <i>Neisseria sicca</i> (1), <i>Acinetobacter baumannii</i> + <i>Enterobacter sp.</i> + <i>Aspergillus</i> (1), <i>Klebsiella pneumoniae</i> (2), <i>Acinetobacter baumannii</i> + <i>Klebsiella pneumoniae</i> (1),
<b>Urinary</b>	<b>1</b>	<i>Psuedomonas aeruginosa</i> (1)

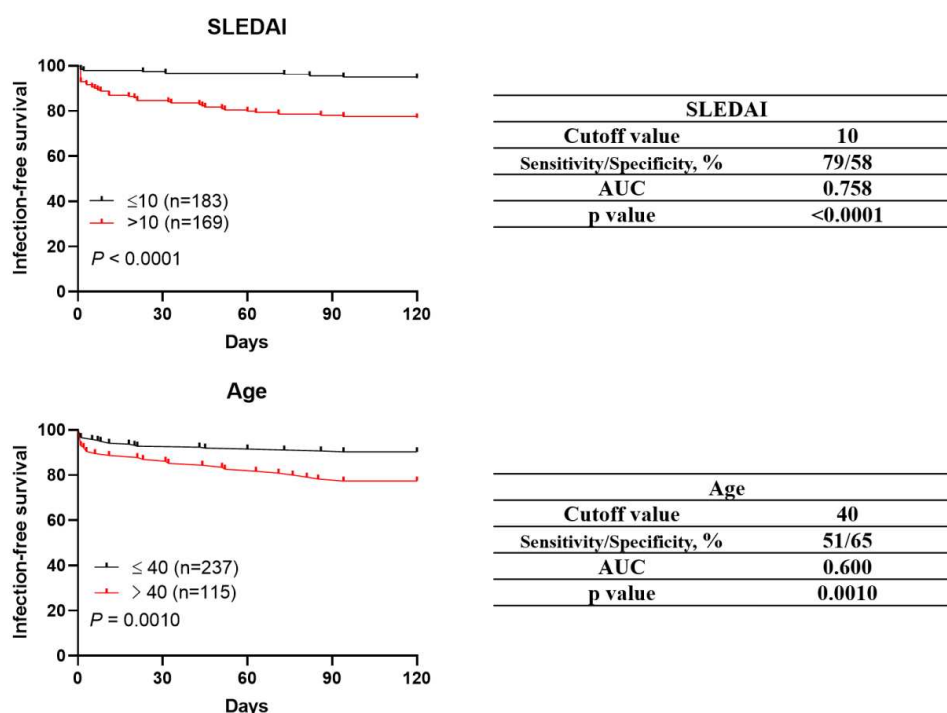
CNS: central nervous system; BALF: bronchoalveolar lavage fluid.

Supplementary Table 3. Associations of SLEDAI >10, peripheral lymphocyte count < 0.8X10<sup>9</sup>/L and serum creatinine >104 μmol/L with major infections in the first 4-month

Predictors for major infection within first 4 months	Adjusted for glucocorticoids received within 1 month of enrollment*	
	OR (95% CI)	P value
SLEDAI > 10	3.53 (1.50-8.28)	0.004
Lymphocyte count < 0.8X10 <sup>9</sup> /L	5.17 (2.41-11.04)	<0.0001
Serum creatinine > 104 μmol/L	8.15 (3.50-19.00)	<0.0001

SLEDAI: Systemic Lupus Erythematosus Disease Activity Index. \*Adjusted methylprednisolone pulses (≥500mg/d IV for 3 days) and cumulative prednisone equivalent dosages received within 1 month of enrollment.

Supplementary Figure 1. Cutoff values for SLEDAI and Age for predicting major infection within 4-month in patients with newly diagnosed SLE



AUC = area under the curve. Cutoff values were determined by the multivariable receiver operating characteristic curve. P value was determined by Kaplan-Meier analysis with the Breslow test. Infection-free survival curves were compared between patient groups stratified by the cut-off value of SLEDAI score and Age on admission. SLEDAI: Systemic Lupus Erythematosus Disease Activity Index.