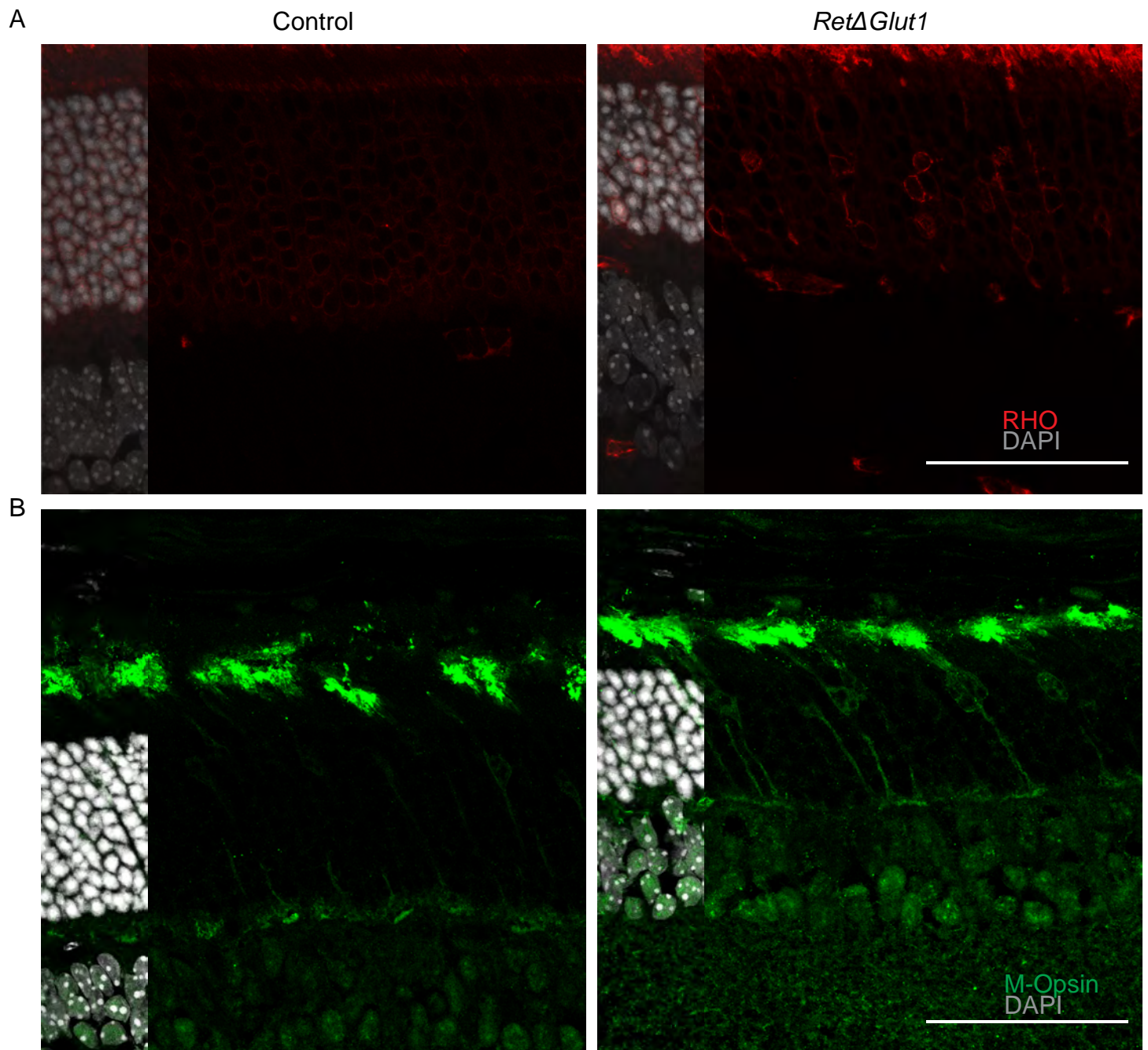


Supplementary Figure 1



Supplementary FIGURE 1 Reduced Opsin trafficking to the OS, with loss of *Slc2a1* in the retina

A) RHO immunofluorescence (Red) in retina cryosections from control and *RetΔGlut1* mice at 1 month of age, counterstained with DAPI (gray). Scale bar indicates 50 μm.

B) M-Opsin immunofluorescence (Green) in retina cryosections from control and *RetΔGlut1* mice at 1 month of age, counterstained with DAPI (gray). Scale bar indicates 50 μm.