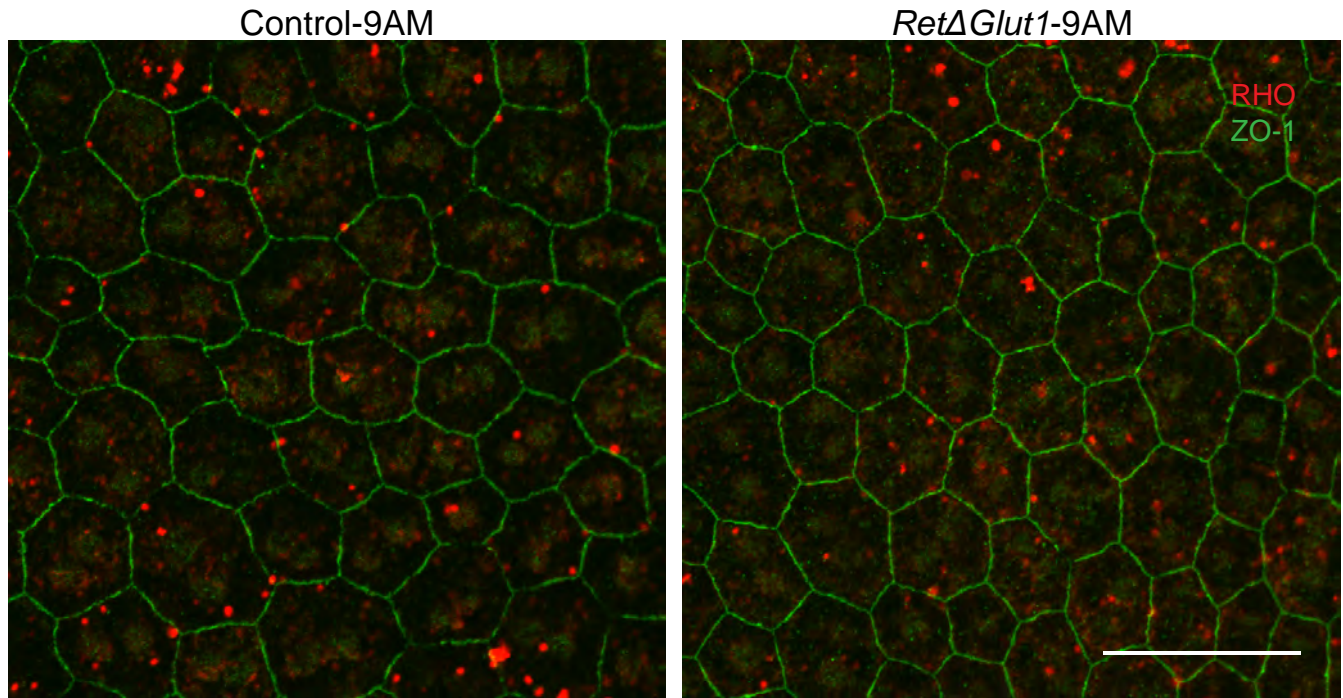


## Supplementary Figure 2



### Supplementary FIGURE 2 Normal uptake of rod OS by RPE in *RetΔGlut1*

RPE flat mounts stained with RHO (Red) and ZO-1 (Green) from mice sacrificed 2-3 hours after light onset from 1 month old mice. Scale bar indicates 50  $\mu$ m.