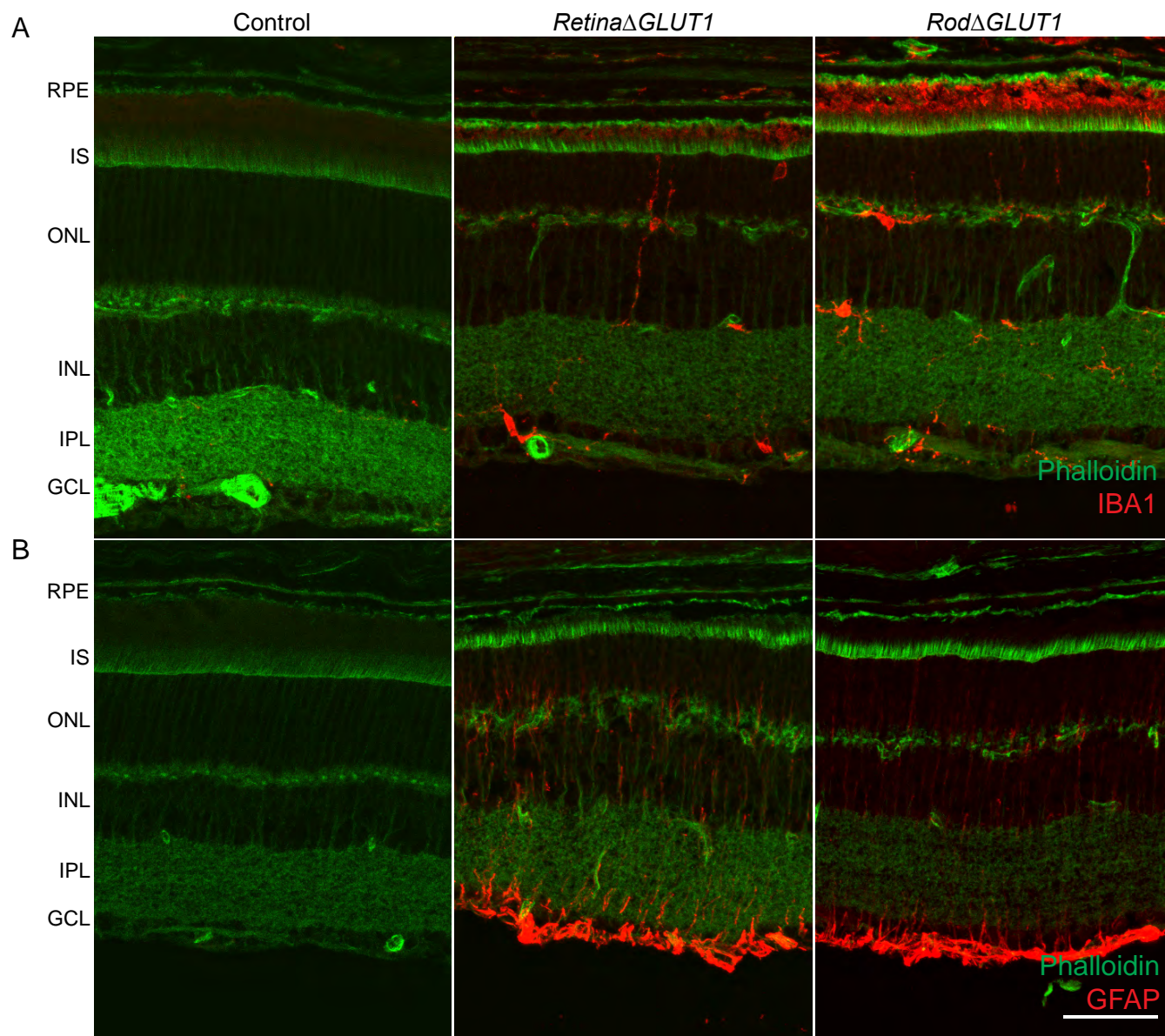


Supplementary Figure 4



Supplementary FIGURE 4 Immune cell activation and Müller gliosis

- A) Iba-1 immunofluorescence (red) in retina cryosections from 4-month-old control, 4-month-old *RetΔGlut1* and 4-month post-tamoxifen injected *RodΔGlut1* mice (N=2), counterstained with Phalloidin (green). Scale bar indicates 50 μm.
- B) GFAP immunofluorescence (red) in retina cryosections from 4-month-old control, 4-month-old *RetΔGlut1* and 4-month post-tamoxifen injected *RodΔGlut1* mice (N=2), counterstained with Phalloidin (green). Scale bar indicates 50 μm.