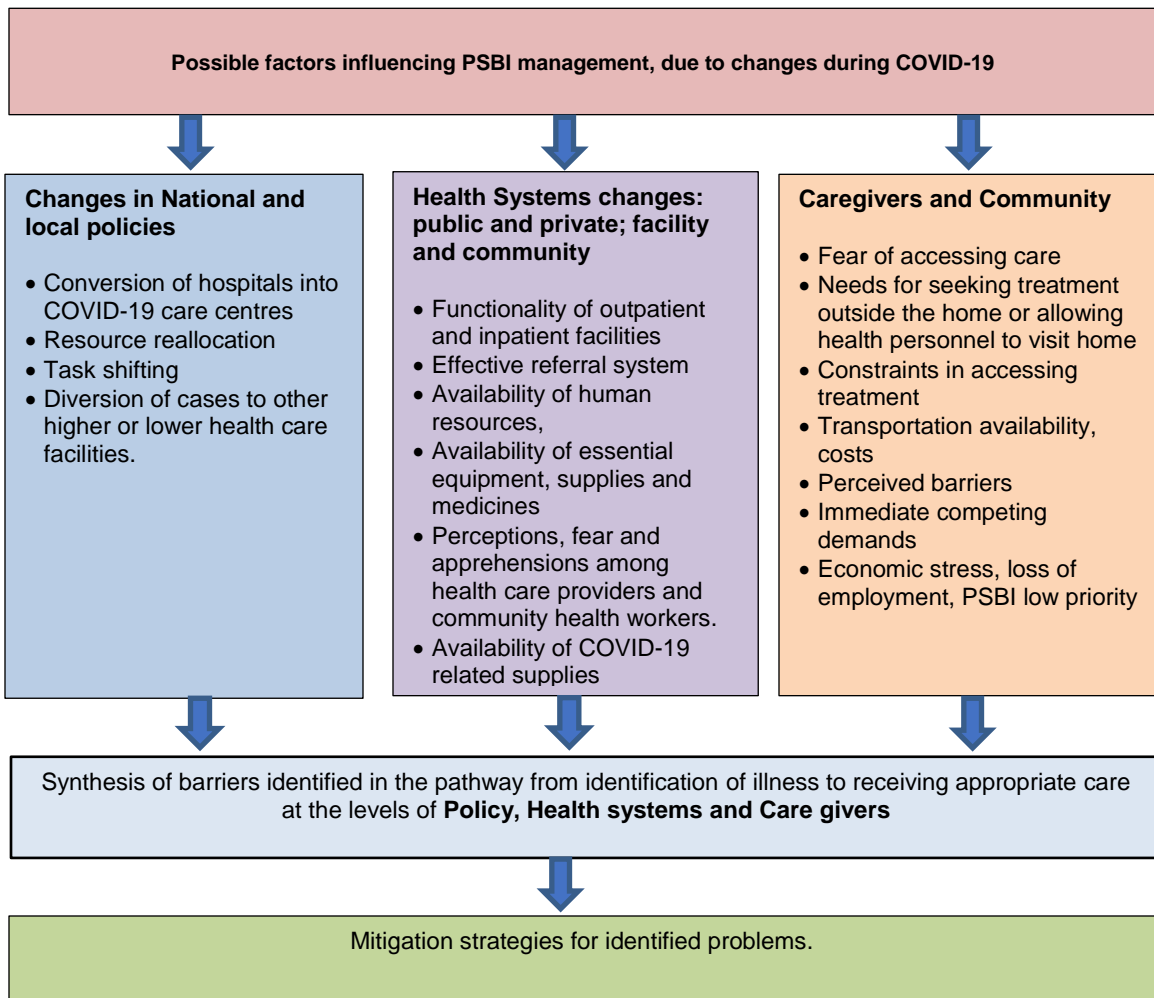


**Supplementary Figure S1. Conceptual framework of possible factors influencing PSBI management due to the COVID-19 pandemic**



**Supplementary Table S1. Site description**

Site	Bangladesh	Ethiopia	UP, India	HP, India	Nigeria	Pakistan
Study area in square kilometers	3452	625*	1100	2825	2629	2590
Population	~ 3,434,188	~ 1,270,472	~ 1,900,000	~ 579,942	~ 550,000	~ 4,980,527
Population type	Urban, rural	Urban, rural	Urban and rural	Peri-Urban	Peri-urban, Rural	Urban, rural
Number of study facilities	4	2	3	2	3	2
Level of study facilities	Two secondary level hospitals and two tertiary level hospitals	Two secondary level hospitals	One tertiary level and two secondary-level hospitals	One tertiary level and one secondary-level hospital	Three secondary level hospitals	One tertiary level and one secondary-level hospital
Number of total beds in study facilities	Secondary level hospitals: 50   Tertiary level hospitals: 500-1000	Secondary level hospital: 301   Tertiary hospital: 346	Secondary level hospitals: 50 – 100 beds/hospital   Tertiary level hospital: 1000	Tertiary level hospital: 250   Secondary level hospital: 100	Giwa General Hospital: 175   Hajiya Gambo Sawaba General Hospital: 200   Major Ibrahim Bello Abdullahi General Hospital: 75	Secondary level hospital: 122   Tertiary level hospital: 81
Number of paediatric beds in study facilities	Secondary level hospitals: not specified   Tertiary level hospital: 80	Secondary level hospitals: 83   Tertiary level hospitals: 116 beds	Secondary level hospitals: 19   Tertiary level hospital: 120	Tertiary level hospital: 35   Secondary level hospital: 21	Giwa General Hospital: 80   Hajiya Gambo Sawaba General Hospital: 25   Major Ibrahim Bello Abdullahi General Hospital: 0	Secondary level hospital: 110   Tertiary level hospital: 0
Neonatal intensive care units in study facilities	Secondary level hospitals: not available   Tertiary level hospital: available	Available in all hospitals	Available in all hospitals	Available in all hospitals	Not available at all hospitals	Secondary level hospital: not available   Tertiary level hospital: available

\* Only main towns were included to estimate the study area, rural catchment areas were not included