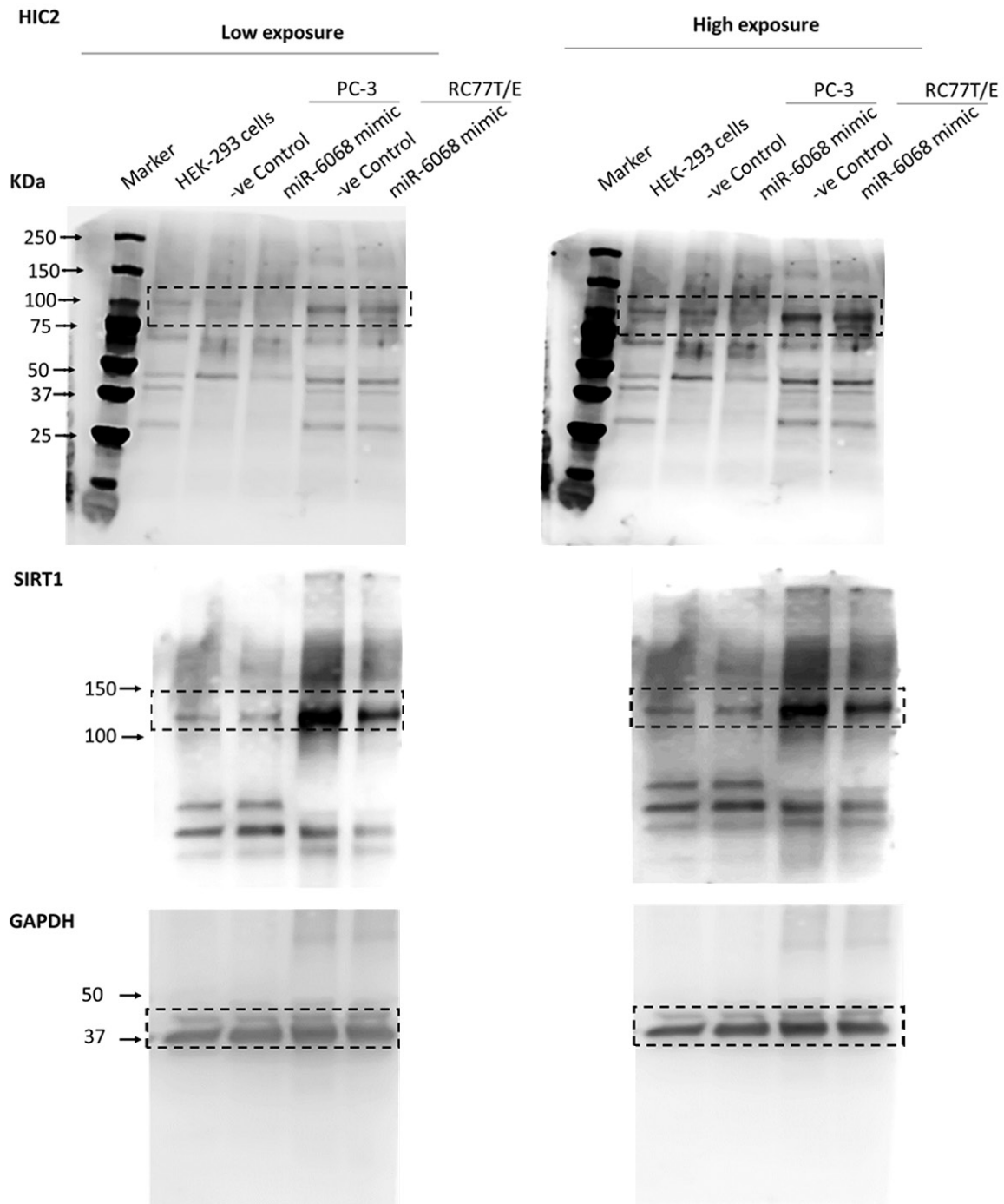


# sEV-associated miR-6068 promotes PCa aggressiveness

## Supplementary materials

The following supplementary materials are available online at the American Journal of Cancer Research.



**Supplementary Figure 1.** HIC2 protein expression in miR-6068 mimic-transfected PCa cells. Western blot analysis shows a decrease in HIC2 and SIRT1 after transfection of PCa cells with miR-6068 mimic.

sEV-associated miR-6068 promotes PCa aggressiveness

**Supplementary Table 1.** Clinical information of PCa samples and healthy individuals

Variable	Normal	PCa
Total number	30	50
Age (Mean $\pm$ SD)	67.5 $\pm$ 16.2	69.3 $\pm$ 7.2
Gleason score (n)		
GS<7		13
GS=7		6
GS>7		31
T-stage (n)		
I		1
II		29
III		13
IV		7
Lymph node involvement (n)		
Yes		6
No		44