

Supplementary

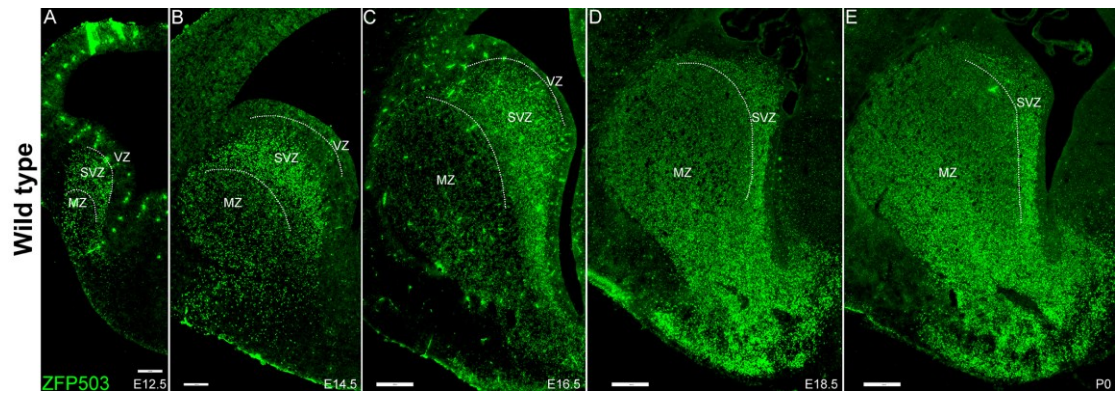


FIGURE S1. Ontogeny of Zfp503 protein expression in developing striatum.

(A-E) ZFP503 protein is selectively detected in the LGE (striatal primordia) at E12.5

(A), E14.5 (B), E16.5 (C), E18.5 (D) and P0 (E). Scale bar: 200 μm in A-E.

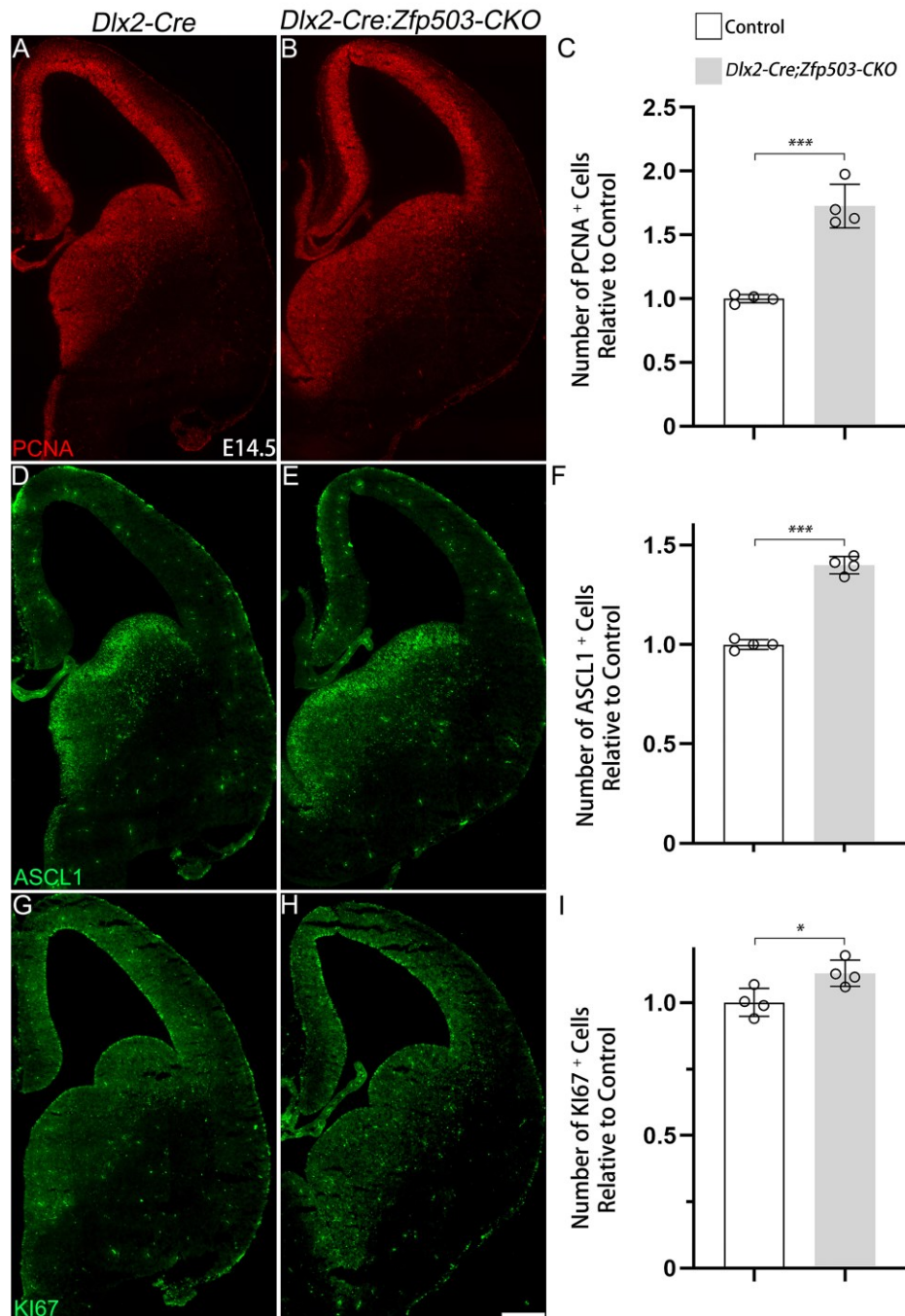


FIGURE S2. The differentiation of the progenitor cells was affected in the *Zfp503-DCKO* mice. (A-I) The number of the PCNA-, ASCL1- and KI67-positive cells was significantly reduced in the *Zfp503-DCKO* mice compared to the control mice. (unpaired two-tailed Student's t-test, * $P < 0.05$, *** $P < 0.001$, $n = 4$ mice per group, mean \pm SEM). Scale bar: 500 μm in H for A-H.