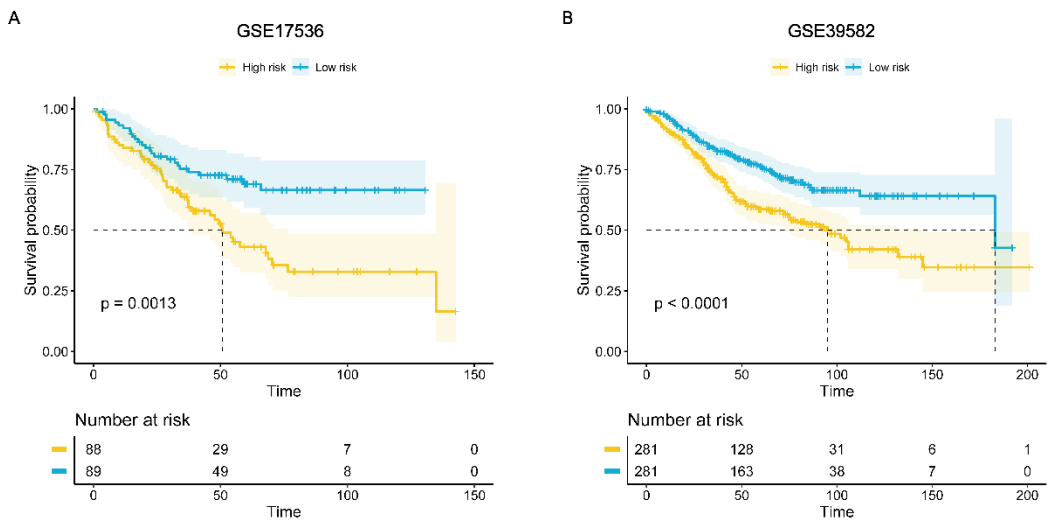
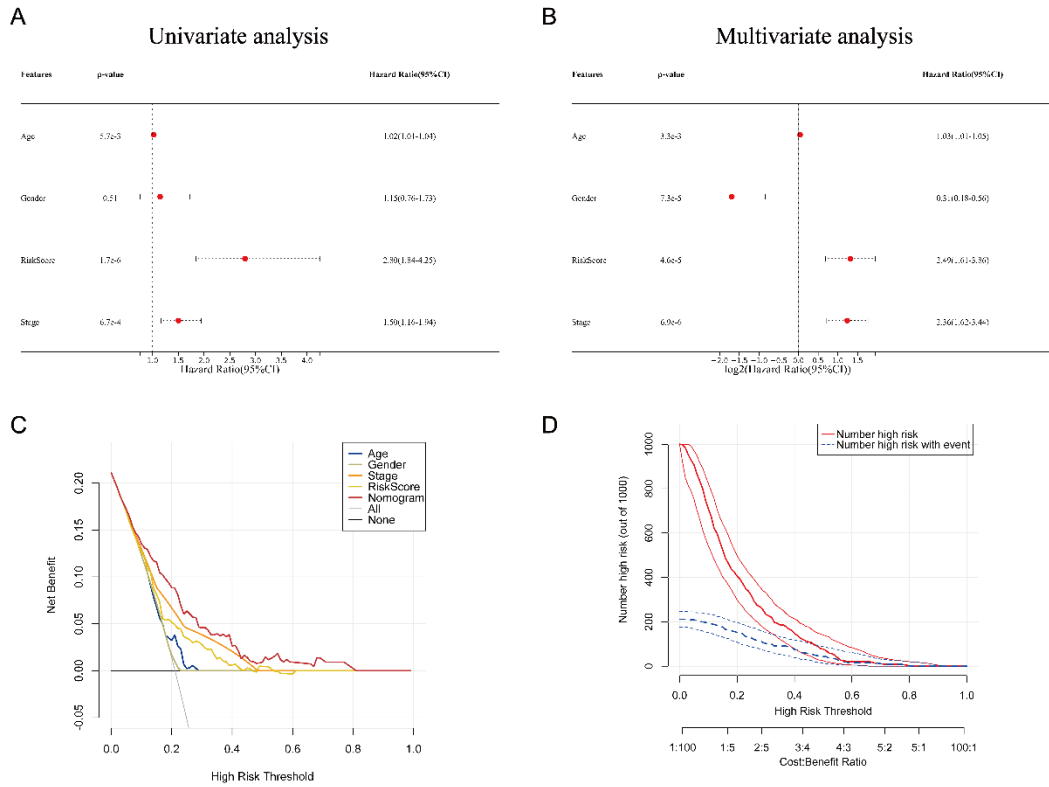


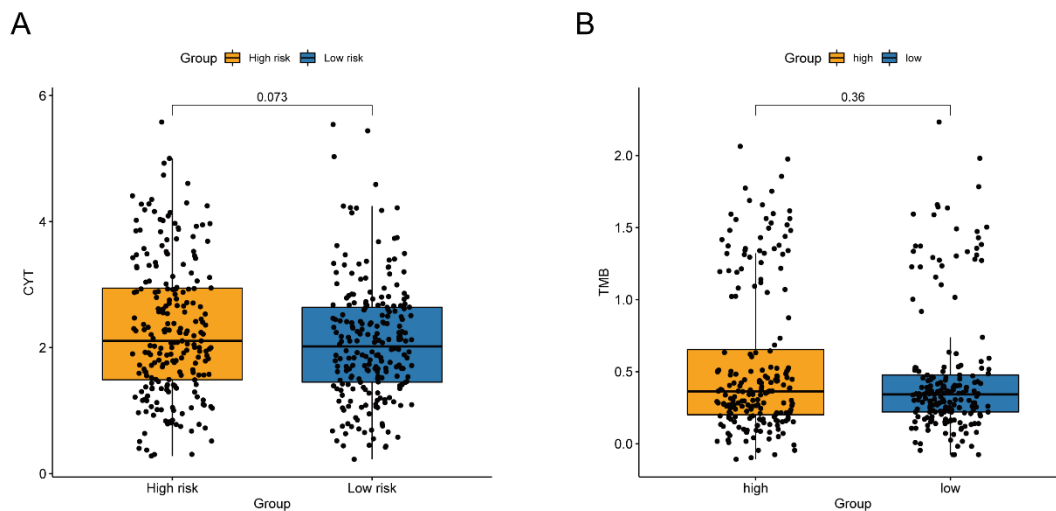
**Supplementary Figure S1 | KM survival curves of COAD patients stratified by age, gender, and stage.**



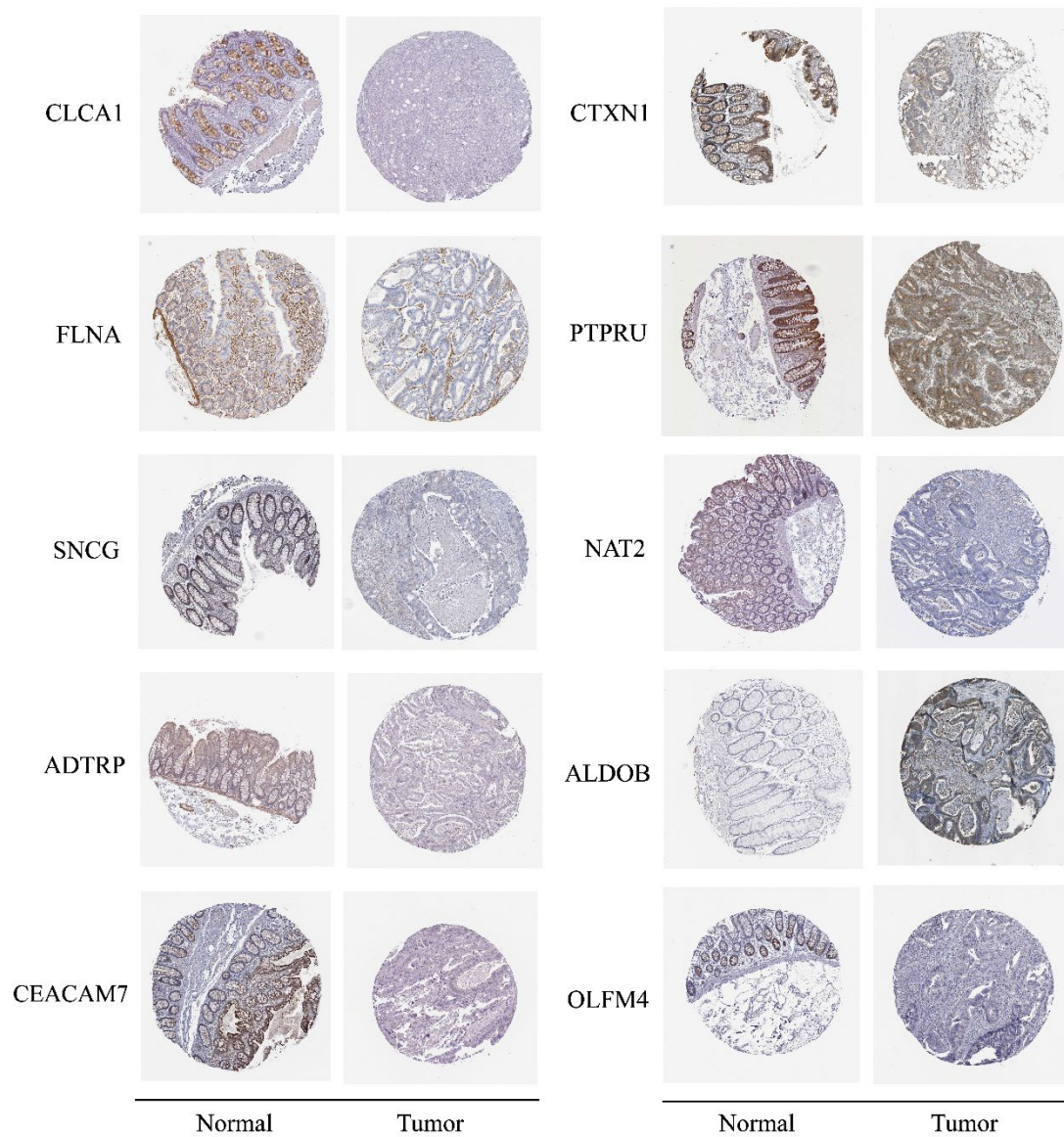
**Supplementary Figure S2 | Validation of the glycolysis- and lactate-related gene prognostic signature in GSE17536 (A) and GSE39582 (B).**



**Supplementary Figure S3 | (A, B)** An analysis of the glycolysis- and lactate-related gene prognostic signature using univariate **(A)** and multivariate **(B)** Cox regression. **(C, D)** DCA **(C)** and CIC **(D)** of the nomogram.



**Supplementary Figure S4 | (A)** Relationships between the glycolysis- and lactate-related gene prognostic signature and CYT activity score. **(B)** Relationships between the glycolysis- and lactate-related gene prognostic signature and the TMB.



**Supplementary Figure S5** | Representative immunohistochemistry images of glycolysis- and lactate-related genes from the Human Protein Atlas database.