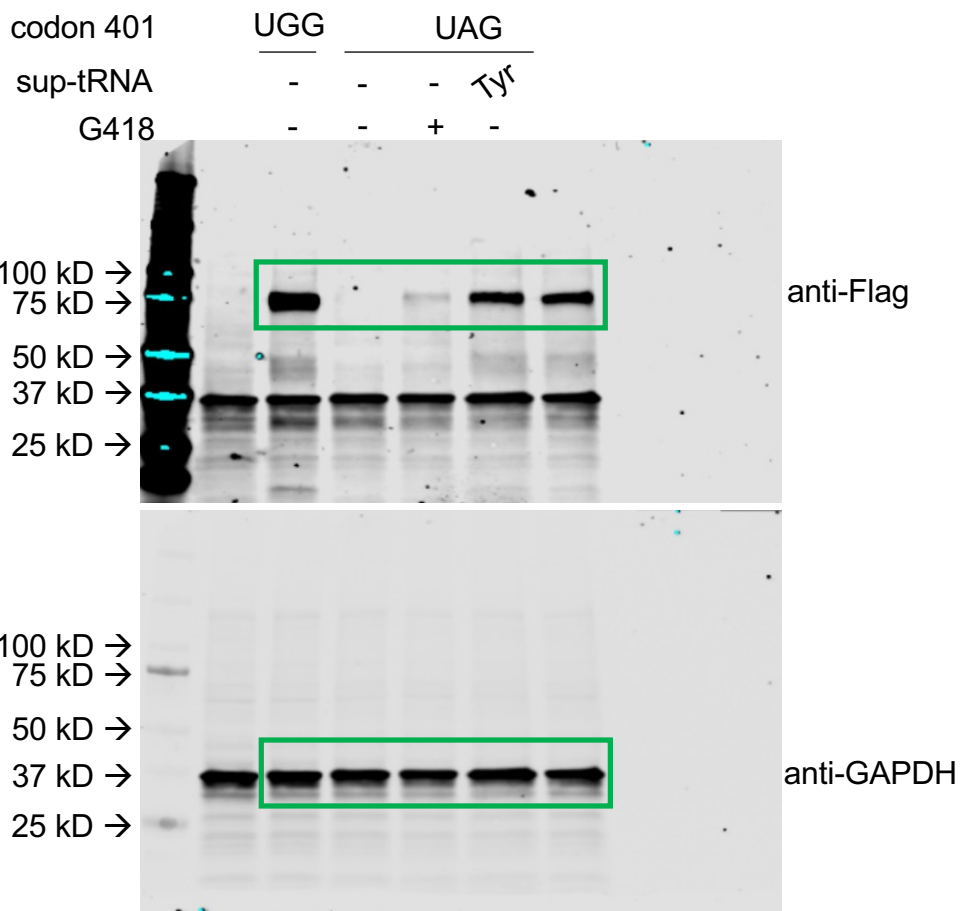
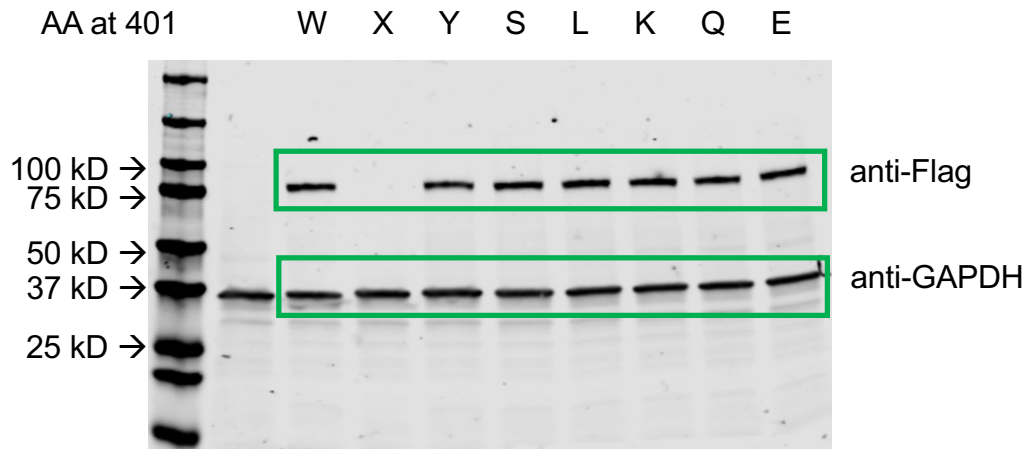




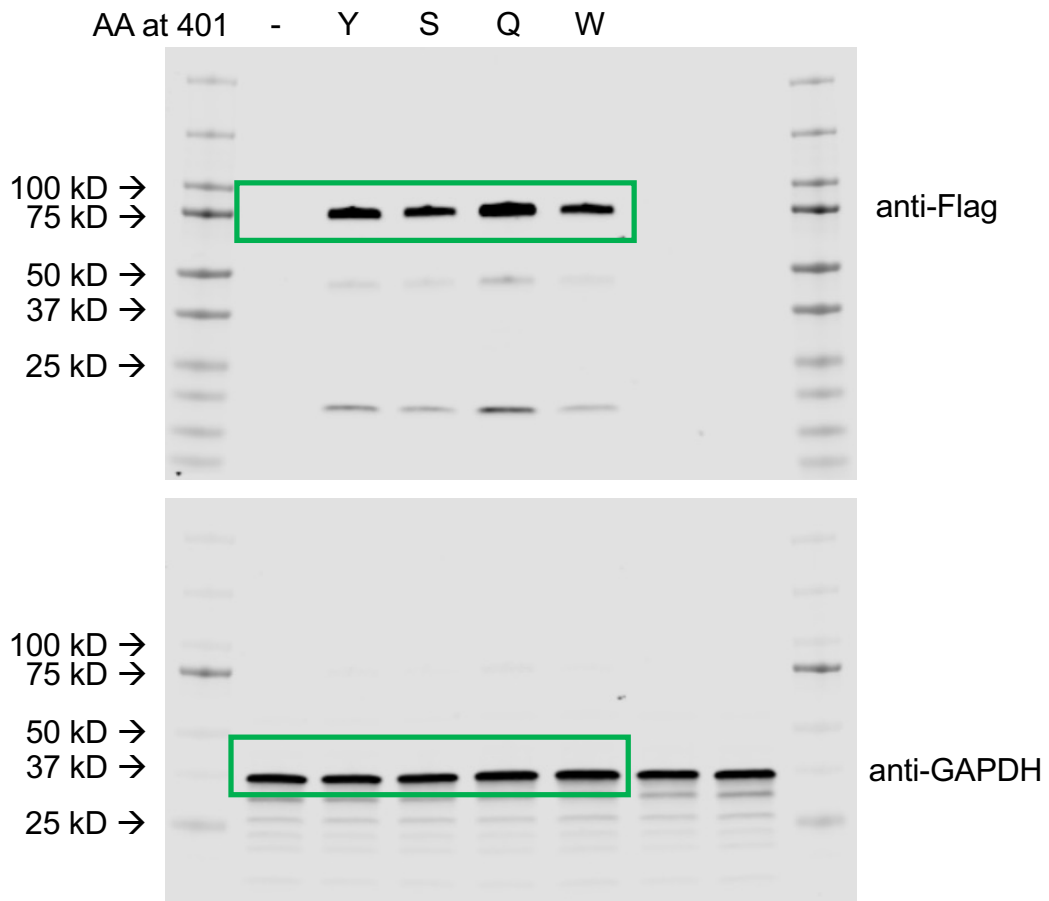
**Fig. 1e**



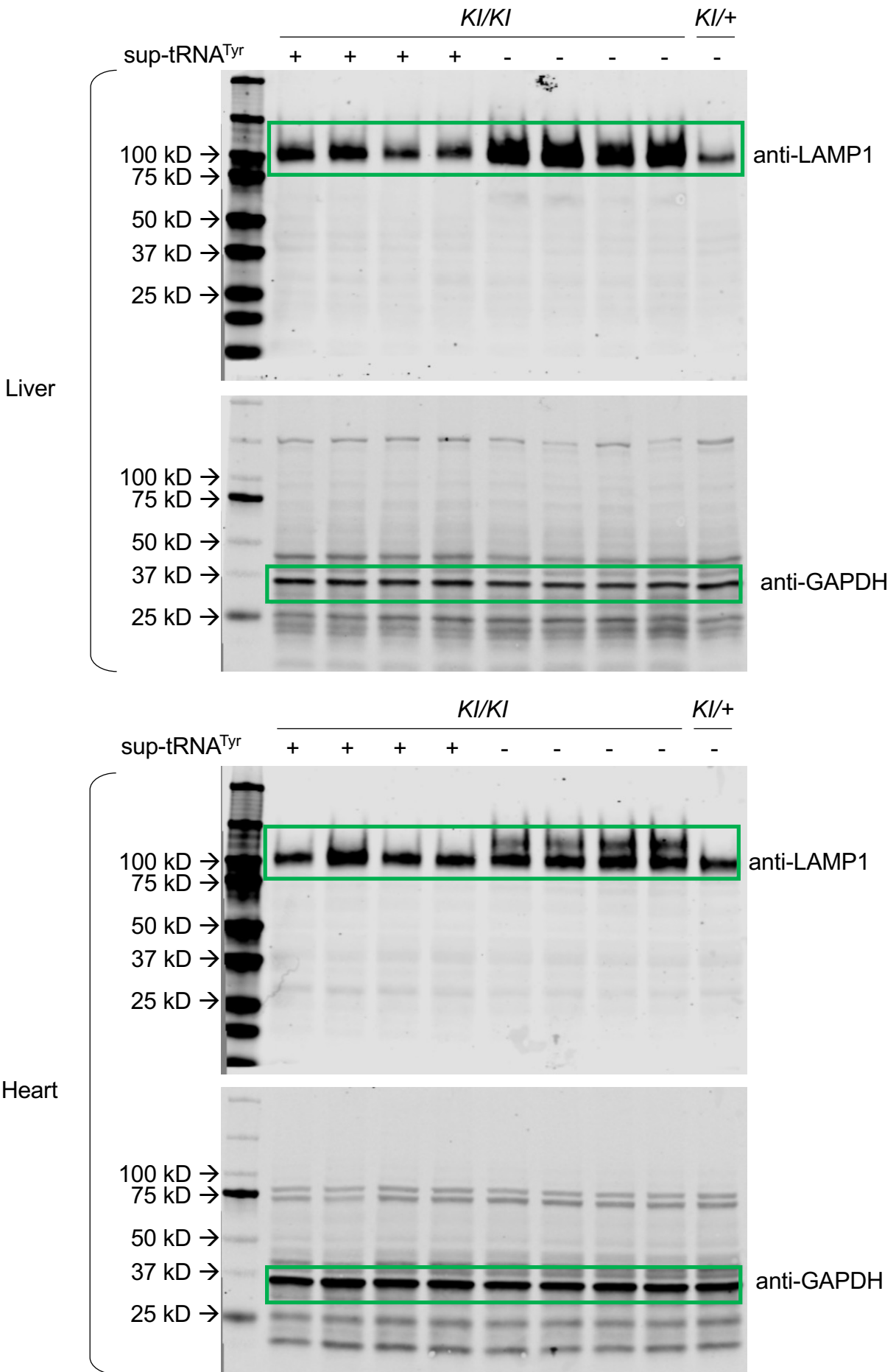
## Extended Data Fig. 1e



## Extended Data Fig. 2c



# Extended Data Fig. 5a



**Supplementary Figure 2. Gating strategy in flow cytometry.**  
 R1: Captured events; R2: live cells; R3: live single cells; R4: GFP positive cells; R5: mCherry positive cells. Representative flow cytometry plots were shown. The same gating settings were applied to all groups. SSC: side scatter; FSC: forward scatter; FSC-A: FSC area; FSC-H: FSC height.

Extended Data Fig. 1a

