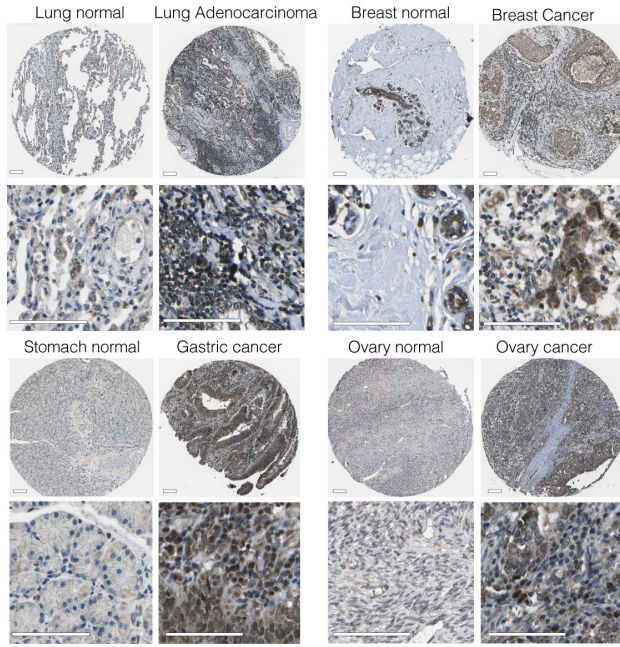


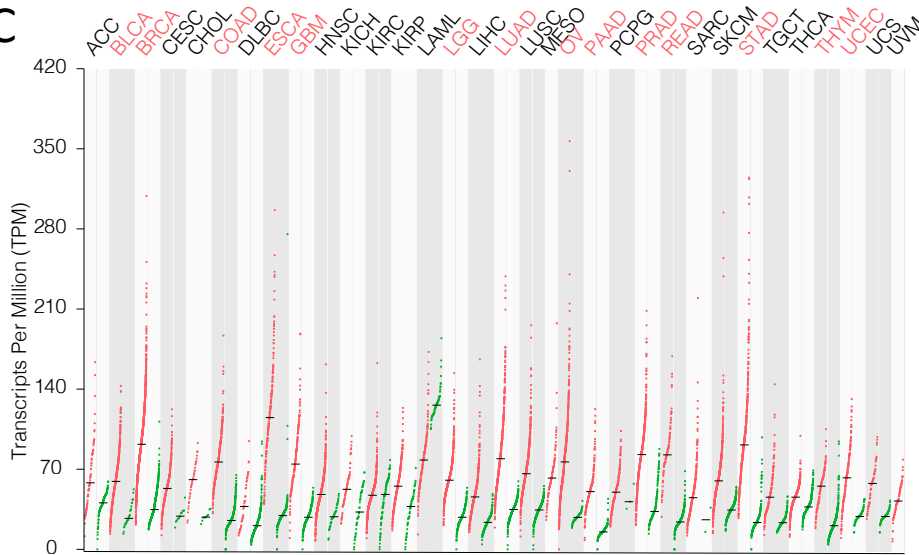
A



B

TCGA	Detail	n (tumor)	n (normal tissue)
ACC	Adrenocortical carcinoma	77	128
BLCA	Bladder Urothelial Carcinoma	404	28
BRCA	Breast invasive carcinoma	1085	291
CESC	Cervical squamous cell carcinoma and endocervical adenocarcinoma	306	13
CHOL	Cholangio carcinoma	36	9
COAD	Colon adenocarcinoma	275	349
DLBC	Lymphoid Neoplasm Diffuse Large B-cell Lymphoma	47	337
ESCA	Esophageal carcinoma	182	286
GBM	Glioblastoma multiforme	207	207
HNSC	Head and Neck squamous cell carcinoma	44	44
KICH	Kidney Chromophobe	53	53
KIRC	Kidney renal clear cell carcinoma	100	100
KIRP	Kidney renal papillary cell carcinoma	286	60
LAML	Acute Myeloid Leukemia	173	70
LGG	Brain Lower Grade Glioma	518	207
LIHC	Liver hepatocellular carcinoma	369	160
LUAD	Lung adenocarcinoma	483	347
LUSC	Lung squamous cell carcinoma	486	338
MESO	Mesothelioma	87	
OV	Ovarian serous cystadenocarcinoma	426	88
PAAD	Pancreatic adenocarcinoma	179	171
PCPG	Pheochromocytoma and Paraganglioma	182	3
PRAD	Prostate adenocarcinoma	492	152
READ	Rectum adenocarcinoma	92	318
SARC	Sarcoma	262	2
SKCM	Skin Cutaneous Melanoma	461	558
STAD	Stomach adenocarcinoma	408	211
TGCT	Testicular Germ Cell Tumors	137	165
THCA	Thyroid carcinoma	512	337
THYM	Thymoma	118	339
UCEC	Uterine Corpus Endometrial Carcinoma	174	91
UCS	Uterine Carcinosarcoma	57	78
UVM	Uveal Melanoma	79	

C



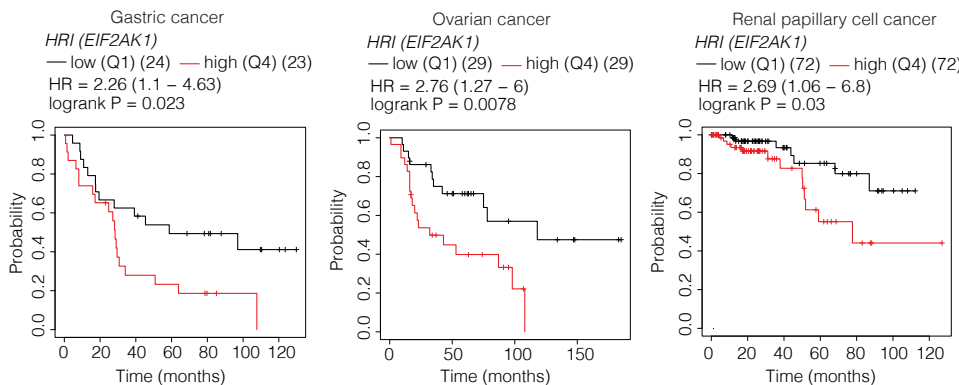
D



E



F



G

