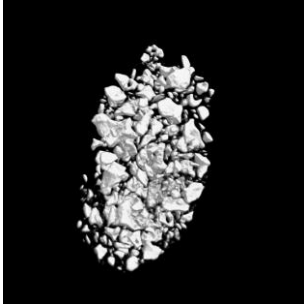
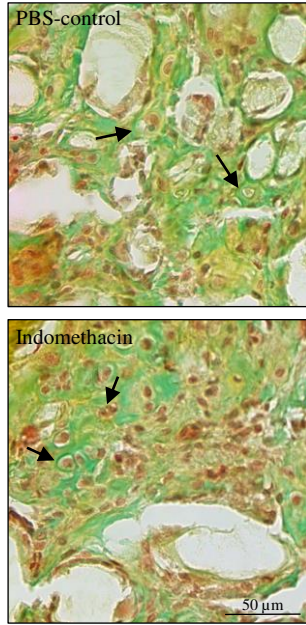


Supplemental Figure 4

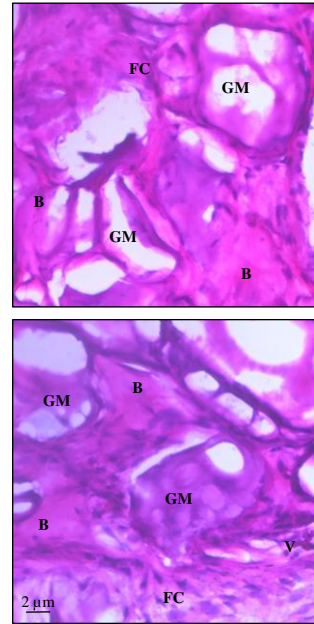
(A)



(B)



(C)



Supplemental Figure 4: In vivo human SSC bone formation proceeds at least in part through a cartilage intermediate. (A) Micro-CT image of 8-week-old control graft showing lack of mineralization between InterOss graft material. (B) Movat's Pentachrome staining of 4-week human SSC-derived grafts staining cartilage in blue. Arrows pointing at phenotypic chondrocyte. (C) Representative higher magnification H&E staining of sectioned 8-week grafts (B: Bone; FC: Fibrocartilage; V: Blood vessel; GM: Graft material).