

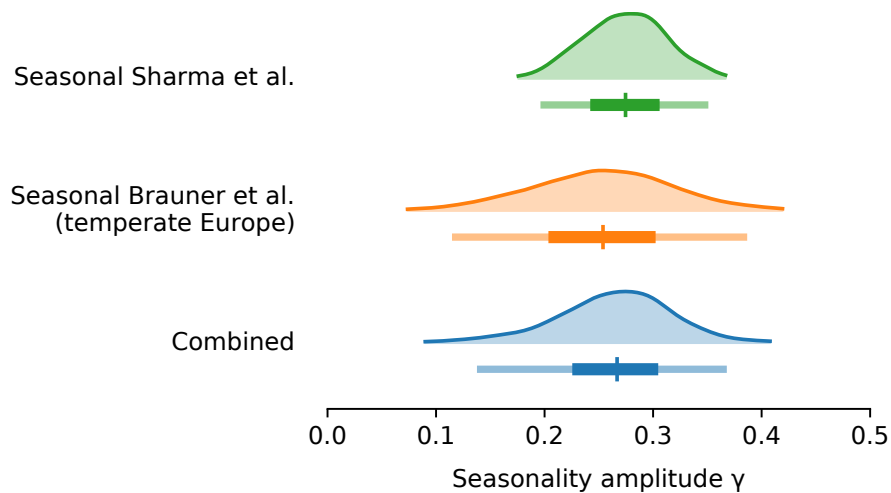
# 1 Detailed results

Model	Seasonal amplitude $\gamma$		
	Median	50% CI	95% CI
Seasonal Sharma <i>et al.</i>	0.275	0.248 – 0.300	0.200 – 0.348
Seasonal Brauner <i>et al.</i>	0.254	0.209 – 0.297	0.118 – 0.383
Combined	0.267	0.231 – 0.299	0.141 – 0.365

Model	Peak-to-trough $R$ reduction [%]		
	Median	50% CI	95% CI
Seasonal Sharma <i>et al.</i>	43.1	39.7 – 46.2	33.3 – 51.6
Seasonal Brauner <i>et al.</i>	40.5	34.6 – 45.8	21.1 – 55.4
Combined	42.1	37.5 – 46.1	24.7 – 53.4

**Table 1.** Inferred median values and credible intervals of the seasonal amplitude  $\gamma$  and the peak-to-trough seasonality  $R$  reduction for temperate Europe countries.



**Fig 1.** Posterior distributions the seasonal amplitude factor  $\gamma$  with 50% and 95% credible intervals.