

The Burden of Community-Acquired Pneumonia Requiring Admission to ICU in the United States

*Rodrigo Cavallazzi, MD; Stephen Furmanek, MS; Forest W. Arnold, DO;
Leslie A. Beavin, MD; Richard G. Wunderink, MD; Michael S. Niederman, MD; and
Julio A. Ramirez, MD*

CHEST 2020; 158(3):1008-1016

Online supplements are not copyedited prior to posting and the author(s) take full responsibility for the accuracy of all data.

© 2020 AMERICAN COLLEGE OF CHEST PHYSICIANS. Reproduction of this article is prohibited without written permission from the American College of Chest Physicians. See online for more details. DOI: 10.1016/j.chest.2020.03.051

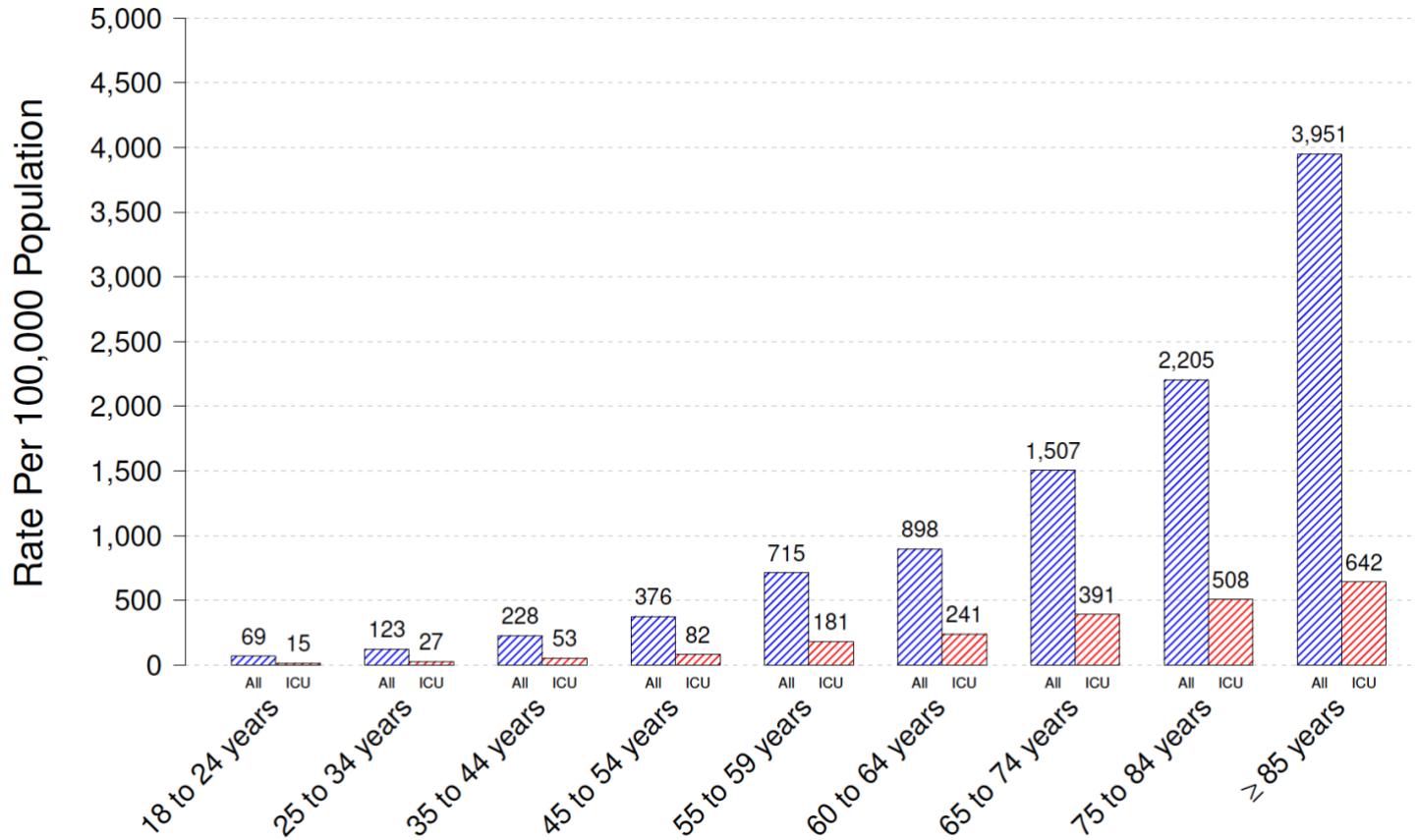
e-Table 1. Characteristics of Alive and Deceased Patients at 30 days

Total Study Population	Alive at 30 days	Deceased at 30 days	P
No.	1220	459	
Demographics and Hospitalization			
Age at hospitalization, Median[IQR]	65 [55, 75]	73 [63, 83]	<0.001
Male sex, Frequency(%)	613 (50)	253 (55)	0.641
Black race, Frequency(%)	254 (21)	74 (16)	0.349
Late ICU admission, Frequency(%)	287 (24)	140 (31)	0.044
Social and Medical History, Frequency(%)			
Chronic obstructive pulmonary disease	637 (52)	205 (45)	0.073
Renal disease	453 (37)	222 (48)	<0.001
Diabetes mellitus	465 (38)	160 (35)	>0.999
Congestive heart failure	441 (36)	184 (40)	>0.999
Obese	469 (38)	126 (28)	<0.001
Current smoker	484 (40)	107 (23)	<0.001
Stroke	176 (14)	64 (14)	>0.999
Neoplastic disease	119 (10)	107 (23)	<0.001
Chronic renal failure	118 (10)	49 (11)	>0.999
HIV disease	14 (1)	6 (1)	>0.999
Physical Exam Findings, Median[IQR]			
Altered mental status, Frequency (%)	405 (33)	203 (44)	0.002
Heart rate (Beats/Minute)	113 [98, 128]	112 [97, 131]	>0.999
Respiratory rate (Breaths/Minute)	28 [23, 33]	27 [23, 34]	>0.999
Systolic blood pressure (mmHg)	102 [87, 126]	97 [84, 116]	0.001
Diastolic blood pressure (mmHg)	51 [42, 61]	48 [39, 58]	<0.001
Temperature (Degrees Celsius)	37 [37, 38]	37 [37, 38]	0.008
Laboratory & Radiographic Findings, Median[IQR]			
Hematocrit (percent)	35 [30, 40]	34 [29, 38]	0.015
Serum bicarbonate (mEq/L)	26 [22, 30]	25 [20, 29]	0.117
Blood urea nitrogen (mg/dL)	23 [15, 35]	32 [21, 48]	<0.001
Serum glucose (mg/dl)	162 [126, 227]	159 [128, 218]	>0.999
Serum sodium (mEq/L)	137 [134, 140]	137 [133, 140]	>0.999
Pleural Effusion, Frequency (%)	454 (37)	203 (44)	0.316
Ventilatory Support and Vasopressors, Frequency(%)			
Invasive mechanical ventilatory support	292 (24)	111 (24)	>0.999
Non-invasive mechanical ventilatory support	247 (20)	98 (21)	>0.999
Vasopressors	105 (9)	82 (18)	<0.001
Severity of Disease, Frequency(%)			
PSI Risk Class IV/V	1007 (83)	425 (93)	<0.001
CURB-65 Score	282 (23)	189 (41)	<0.001

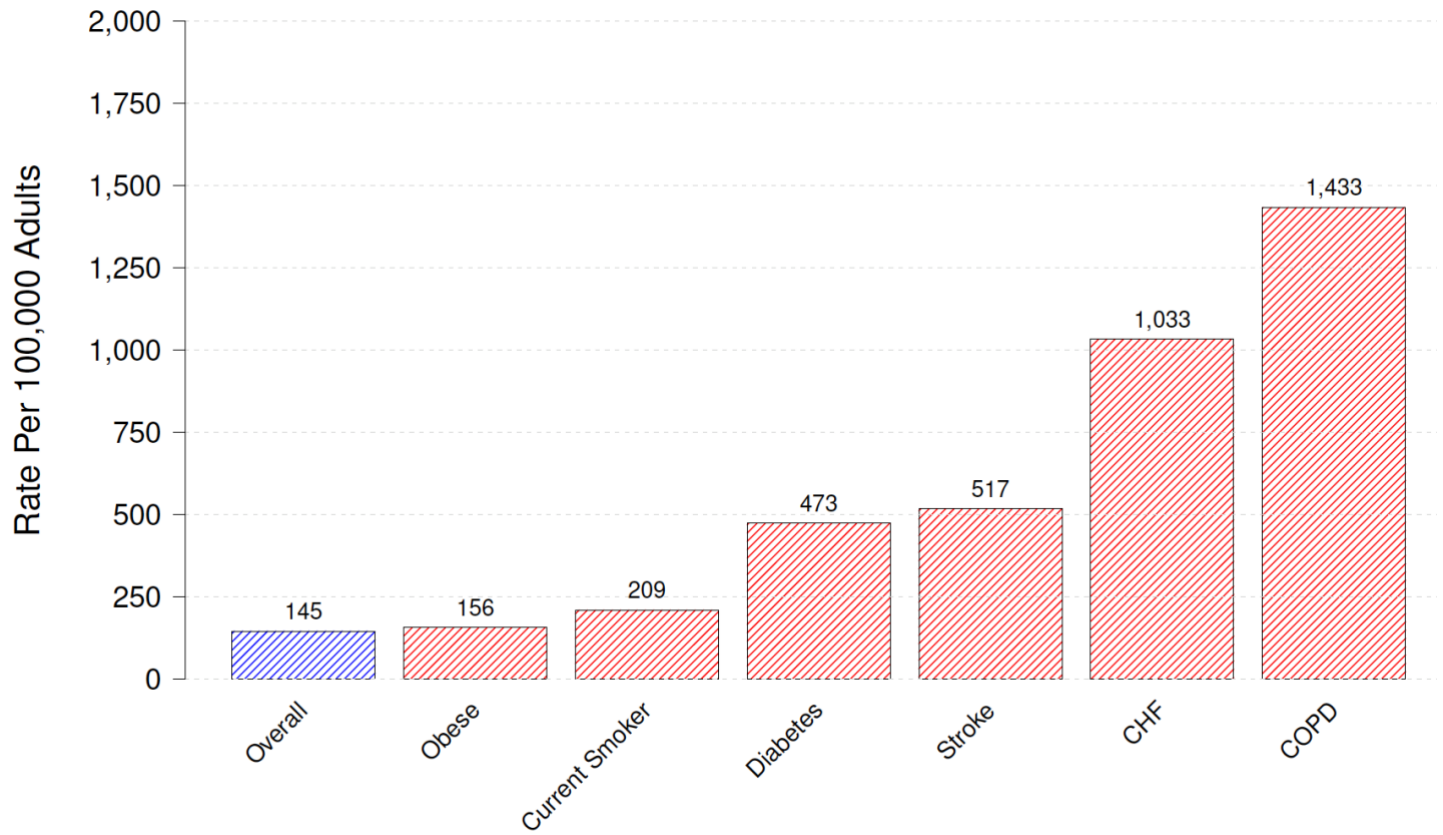
e-Table 2. Characteristics of Alive and Deceased Patients at 1 year

Total Study Population	Alive at 1 year	Deceased at 1 year	P
No.	890	779	
Demographics and Hospitalization			
Age at hospitalization, Median[IQR]*	62 [52, 73]	72 [62, 82]	<0.001
Male sex, Frequency(%)	432 (49)	429 (55)	0.001
Black race, Frequency(%)	186 (21)	140 (18)	>0.999
Late ICU admission, Frequency(%)	210 (24)	216 (28)	0.371
Social and Medical History, Frequency(%)			
Chronic obstructive pulmonary disease	441 (50)	394 (51)	>0.999
Renal disease	315 (35)	358 (46)	<0.001
Diabetes mellitus	318 (36)	301 (39)	>0.999
Congestive heart failure	289 (32)	329 (42)	<0.001
Obese	359 (40)	230 (30)	<0.001
Current smoker	387 (43)	203 (26)	<0.001
Stroke	123 (14)	115 (15)	>0.999
Neoplastic disease	53 (6)	169 (22)	<0.001
Chronic renal failure	68 (8)	98 (13)	<0.001
HIV disease	11 (1)	9 (1)	>0.999
Physical Exam Findings, Median[IQR]			
Altered mental status, Frequency (%)	290 (33)	313 (40)	0.002
Heart rate (Beats/Minute)	114 [98, 128]	112 [96, 130]	>0.999
Respiratory rate (Breaths/Minute)	28 [23, 33]	28 [23, 34]	>0.999
Systolic blood pressure (mmHg)	103 [87, 126]	99 [85, 120]	0.324
Diastolic blood pressure (mmHg)	51 [42, 62]	49 [40, 58]	0.035
Temperature (Degrees Celsius)	37 [37, 38]	37 [37, 38]	0.056
Laboratory & Radiographic Findings, Median[IQR]			
Hematocrit (percent)	36 [31, 41]	34 [29, 38]	<0.001
Serum bicarbonate (mEq/L)	25 [22, 29]	26 [21, 30]	>0.999
Blood urea nitrogen (mg/dL)	22 [14, 34]	29 [18, 45]	>0.999
Serum glucose (mg/dl)	162 [127, 229]	159 [126, 222]	>0.999
Serum sodium (mEq/L)	137 [134, 140]	137 [133, 140]	>0.999
Pleural Effusion, Frequency (%)	313 (35)	343 (44)	0.070
Ventilatory Support and Vasopressors, Frequency(%)			
Invasive mechanical ventilatory support	209 (23)	192 (25)	>0.999
Non-invasive mechanical ventilatory support	171 (19)	173 (22)	0.256
Vasopressors	78 (9)	107 (14)	0.015
Severity of Disease, Frequency(%)			
PSI Risk Class IV/V	699 (79)	723 (93)	<0.001
CURB-65 Score	176 (20)	290 (37)	<0.001

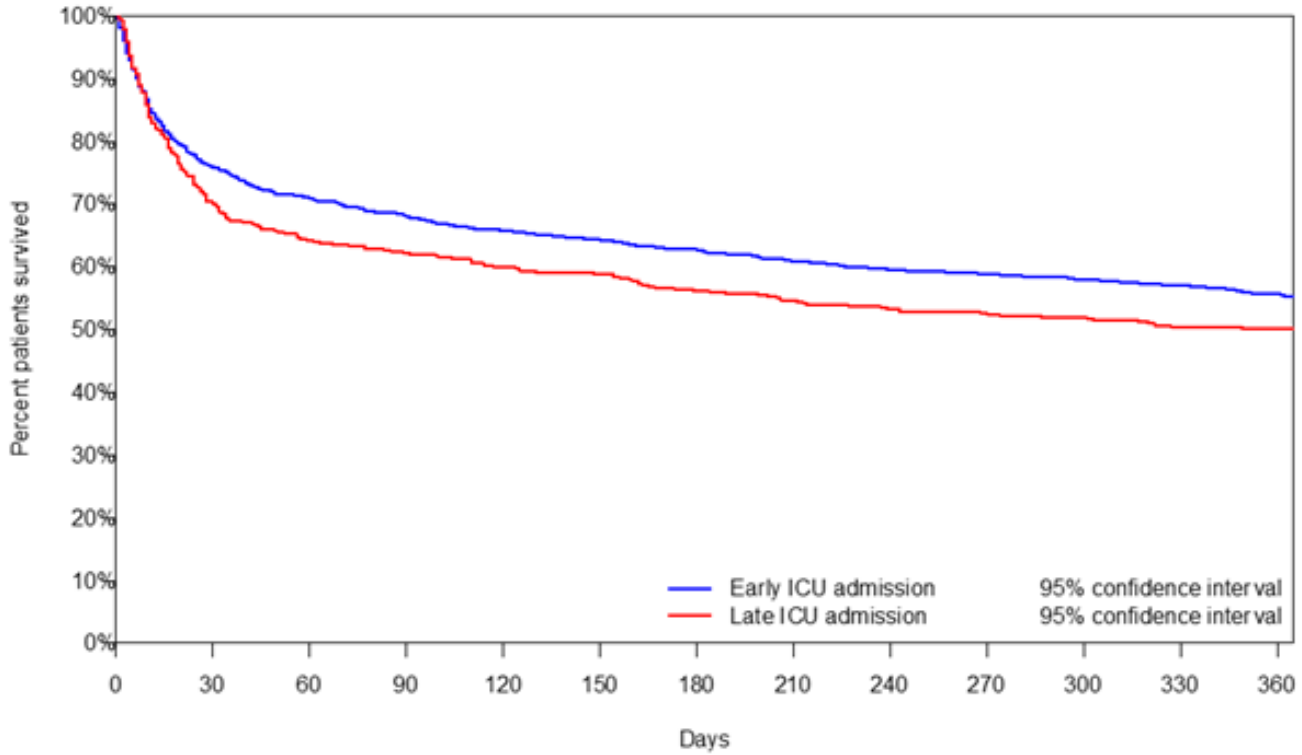
e-Figure 1. Incidence of community-acquired pneumonia requiring hospitalization (All) compared to the incidence of community-acquired pneumonia requiring admission to intensive care (ICU) according to age brackets.



e-Figure 2. Incidence of community-acquired pneumonia requiring admission to intensive care unit according to presence of co-morbidities.



e-Figure 3. Kaplan-Meier curves comparing early and late ICU admission for survival estimates up to one year.



e-Figure 4. Stratified, multivariable Cox proportional hazards regression analysis assessing the impact of demographics, risk factors and comorbidities on mortality.

