

Table S1. Sequence of primers in this study

Gene	Forward (5' to 3')	Reverse (5' to 3')
SAMHD1	ACTGCCATCATCTTGGAA TCCAA	GGGCAAACCTTAATAAAGC GCTTGT
MAP2K6	GAAGCATTGGAACAACC TCAGAC	CCTGGCTATTTACTGTGGC TC
KLF4	CCAGAGGAGCCCAAGCC AAAG	ATCCACAGCCGTCCCAGT C
GAPDH	GGGAAGGTGAAGGTCGG AGT	GGGGTCATTGATGGCAAC A
SAMHD1-151	CGGGGTACCCCGAAGGG CTCAACTGTC	CCCAAGCTTGGCTACACC TGGCGTCCG
SAMHD1-233	CGGGGTACCTGGCGGGA TTGATTTGAG	CCCAAGCTTGGCTACACC TGGCGTCCG
SAMHD1-285	CGGGGTACCTGCCCTCA GTTCTGCTTC	CCCAAGCTTGGCTACACC TGGCGTCCG
SAMHD1-399	CGGGGTACCAGGTGCGG CGGGTAGTGTA	CCCAAGCTTGGCTACACC TGGCGTCCG
SAMHD1-553	CGGGGTACCACTGTGGA ATGAAGACACCCTC	CCCAAGCTTGGCTACACC TGGCGTCCG
SAMHD1-667	CGGGGTACCTGGGAATG CAGTTGGGATG	CCCAAGCTTGGCTACACC TGGCGTCCG

SAMHD1-937	CGGGGTACCTAAGCTATT CCGCCTCAT	CCCAAGCTTGGCTACACC TGGCGTCCG
SAMHD1-1950	CGGGGTACCTGGAGTGC AACGGGAAGA	CCCAAGCTTGTTCTCGGG CTGTCATCG
SAMHD1-285	CTGCTTCTAGCCACGAA	ACGTGAACGCGAAATTC
mutant	ATTTCGCGTTCACGT	GTGGCTAGAAGCAG
SAMHD1-ChIP	GCTCTTTCCTCCCCCTTT CC	GCAGTCCAGTCGTCCTCA AA

Table S2. The information of primary antibodies in this study

Antibodies	Company	Cat.No	Concentration
Anti-SAMHD1	Proteintech	12586-1-AP	WB: 1:2000 IHC: 1:200
Anti-HA-tag	ABclonal	AE008	WB: 1:2000
Anti-MAP2K6	Proteintech	12745-1-AP	WB: 1:500
Anti-Phos-p38	Affinity	AF4001	WB: 1:500
Anti-p38	Affinity	AF6456	WB: 1:500
Anti-GAPDH	Affinity	AF7021	WB: 1:3000
Anti-KLF4	Proteintech	11880-1-AP	WB: 1:500 ChIP: 2 μ g

Fig.S1

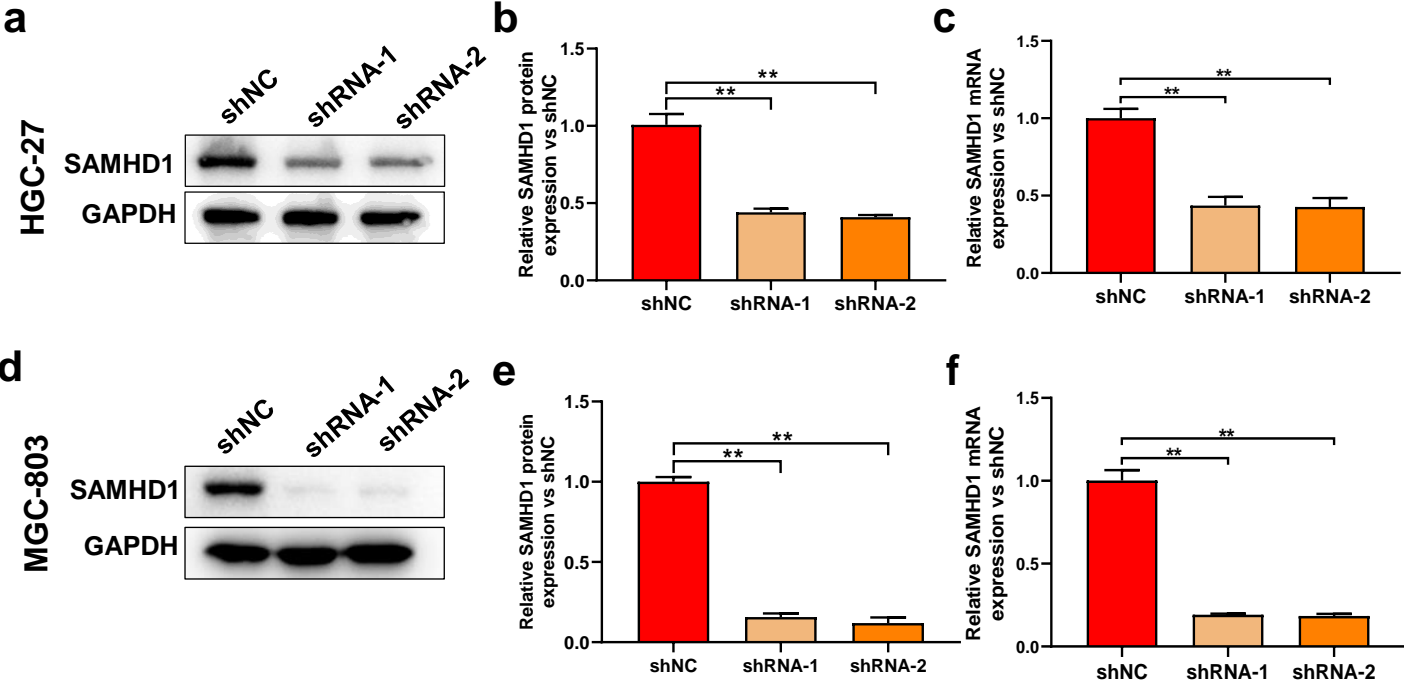


Fig.S1 Establishment of HGC-27 and MGC-803 cells with stable knockdown of SAMHD1. (a, b) Western blot was used to detect the expression levels of SAMHD1 protein in HGC-27 cells. (c) The expression levels of SAMHD1 mRNA in HGC-27 cells were detected using qRT-PCR. (d, e) Western blot was used to detect the expression levels of SAMHD1 protein in MGC-803 cells. (f) The expression levels of SAMHD1 mRNA in MGC-803 cells were detected using qRT-PCR.

Fig.S2

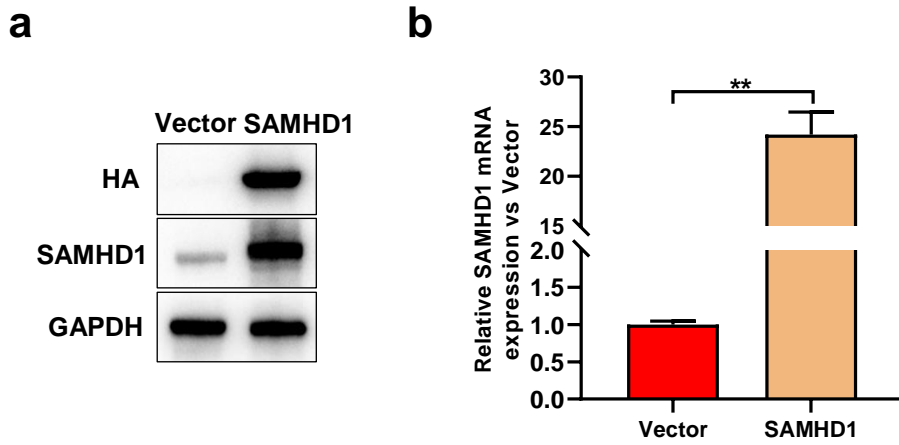


Fig.S2 Establishment of AGS cells with stable overexpression of SAMHD1. (a) Western blot was used to detect the expression levels of SAMHD1 protein in AGS cells. (b) The expression levels of SAMHD1 mRNA in AGS cells were detected using qRT-PCR.

Fig.S3

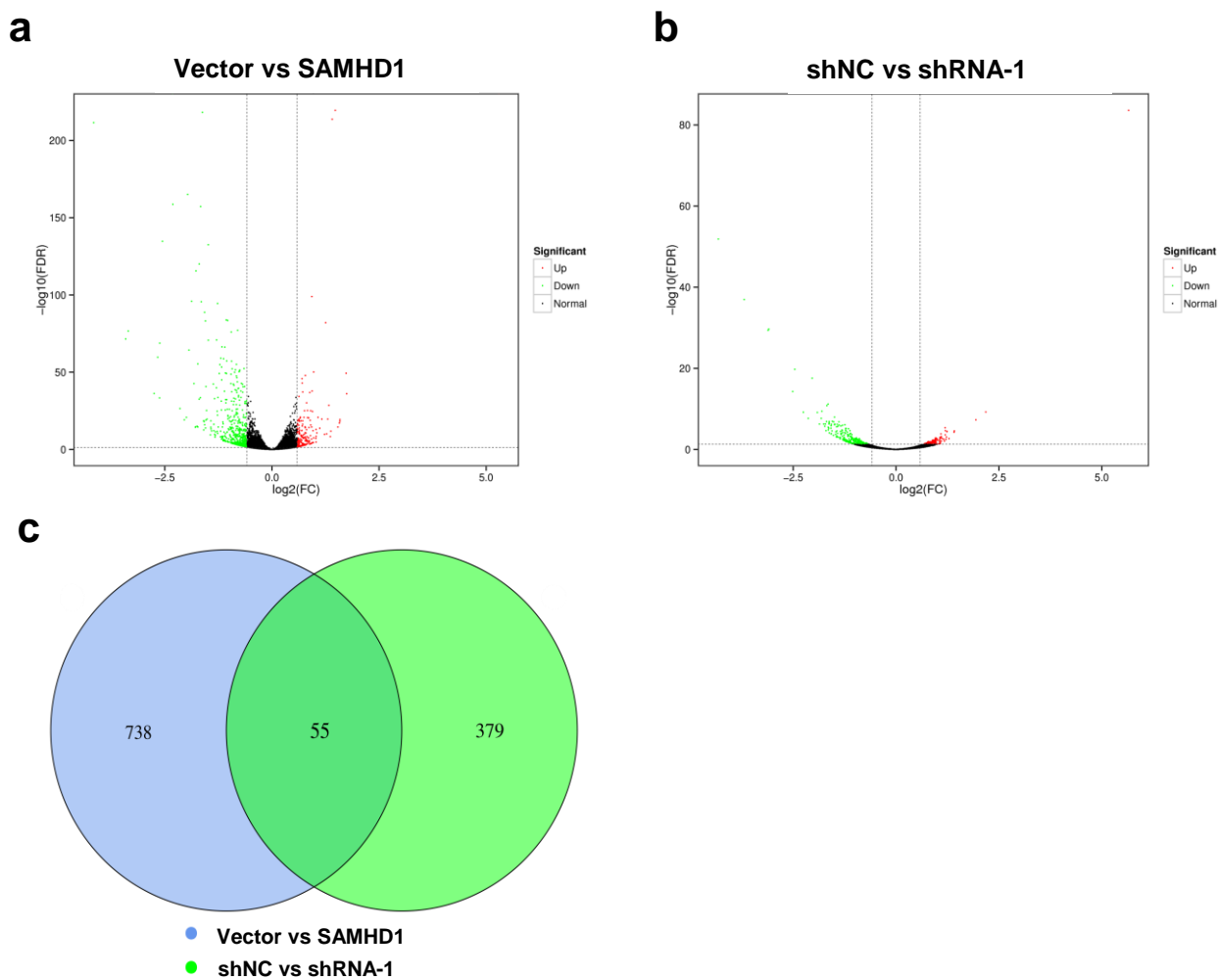


Fig.S3 Analysis of differentially expressed genes in AGS and HGC-27 cells. (a) The RNA seq was performed in AGS cells from SAMHD1 and Vector groups, and the Volcano plot is presented. **(b)** The RNA seq was performed in HGC-27 cells from shRNA-1 and shNC groups, and the Volcano plot is presented. **(c)** Venn diagram of differentially expressed genes in AGS and HGC-27 cells. Each set of mapping data was obtained from two independent RNA-seq.

Fig.S4

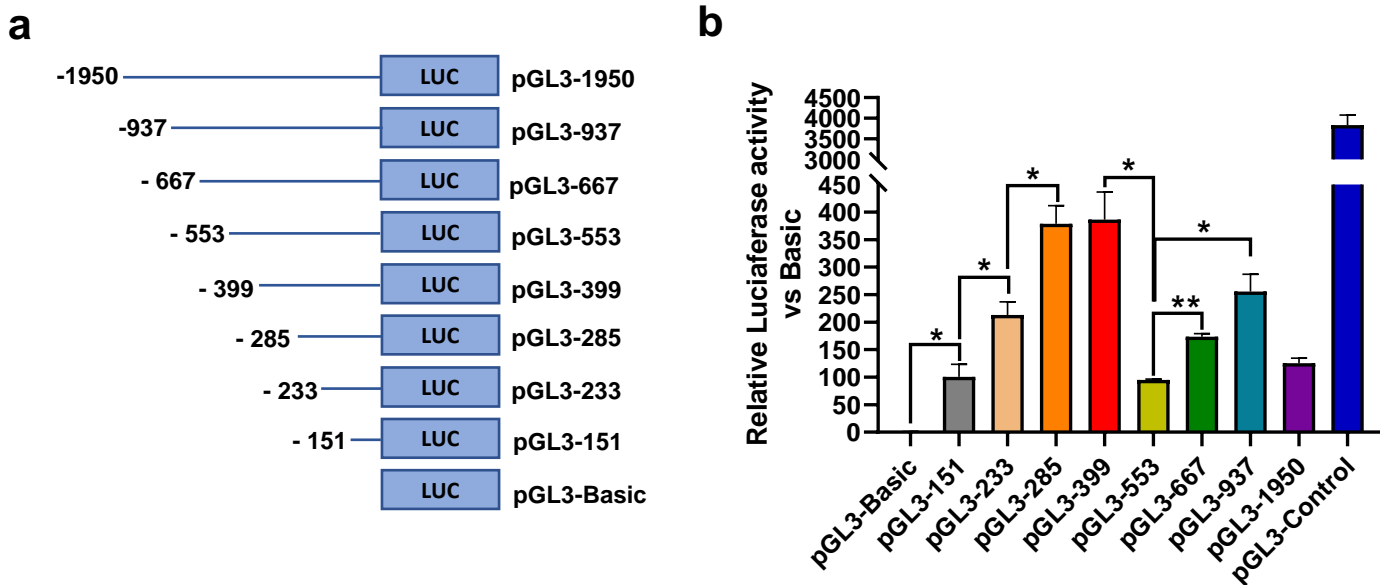


Fig.S4 Identification of core promoter of SAMHD1 gene. (a) Schematic diagram of pGL3 plasmids containing SAMHD1 promoter. (b) Double luciferase reporting assay was used to identify the core promoter of SAMHD1 gene.