

Fig.S1. Precision-Recall curve for the performance of the miR2PE-score in the WMU cohort-1 (A) and WMU cohort-2 (B).

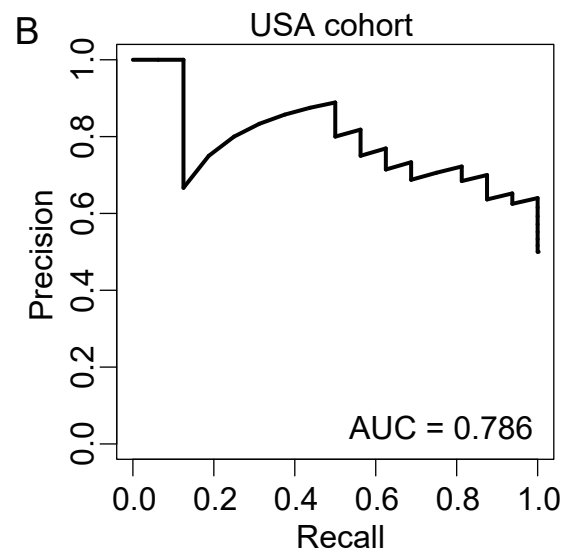
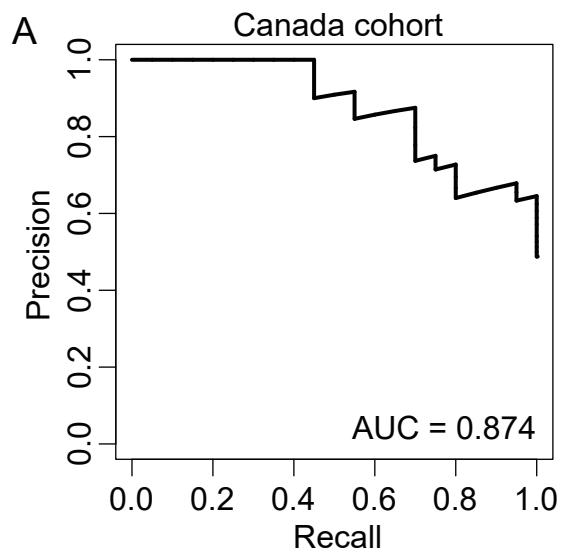


Fig.S2. Precision-Recall curve for the performance of the miR2PE-score in the Canada cohort (A) and USA cohort (B).

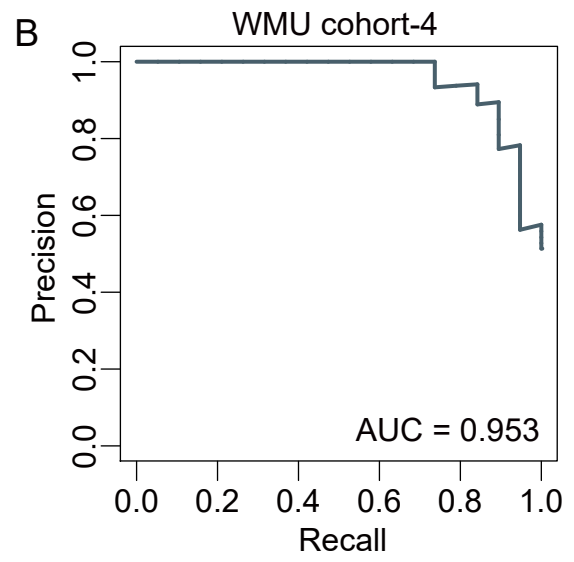
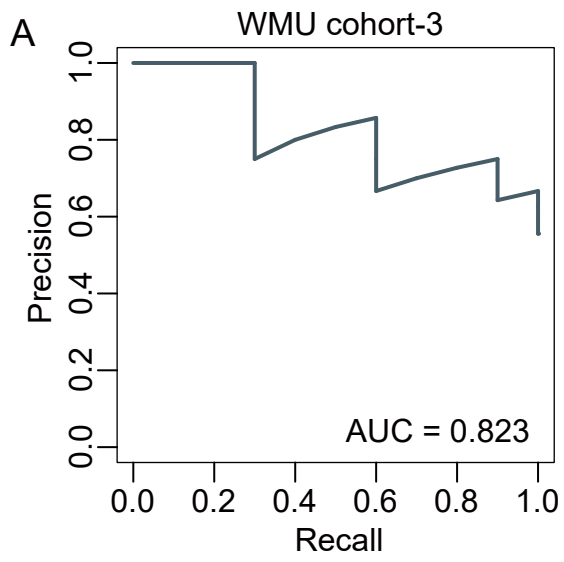
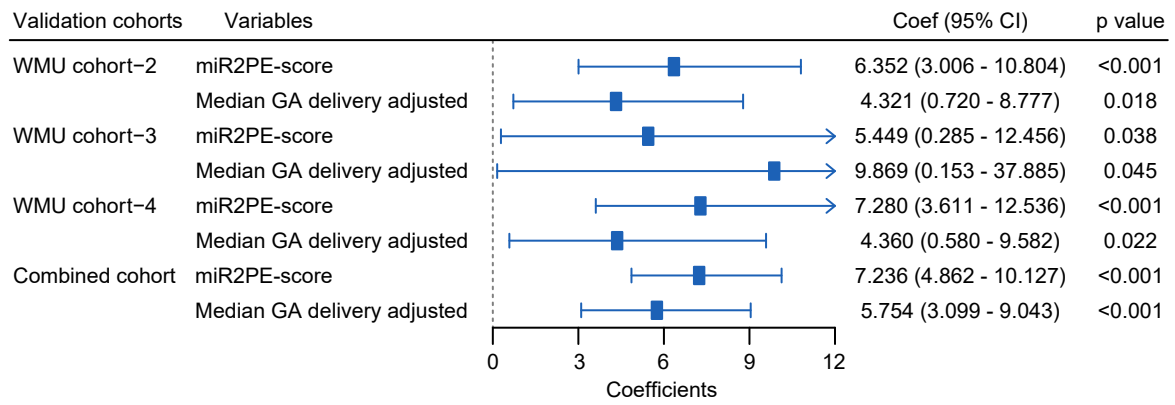


Fig.S3. Precision-Recall curve for the performance of the miR2PE-score in the WMU cohort-3 (A) and WMU cohort-4 (B).



**Fig.S4.** Forest plots of adjusted regression coefficients by gestational ages.

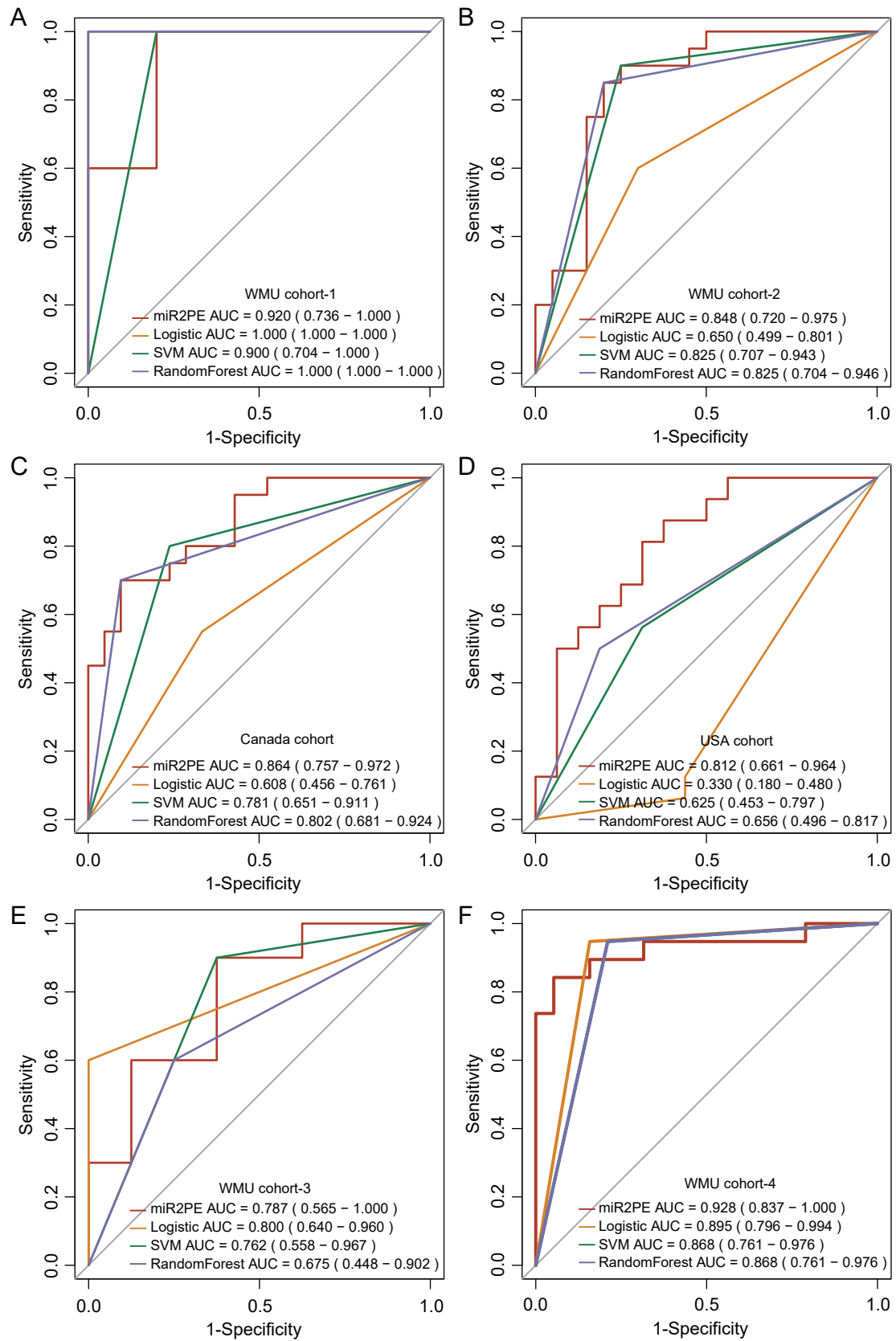


Fig.S5. Performance comparison of the miR2PE-score with other parallel methods to detect PE.