

Supplementals

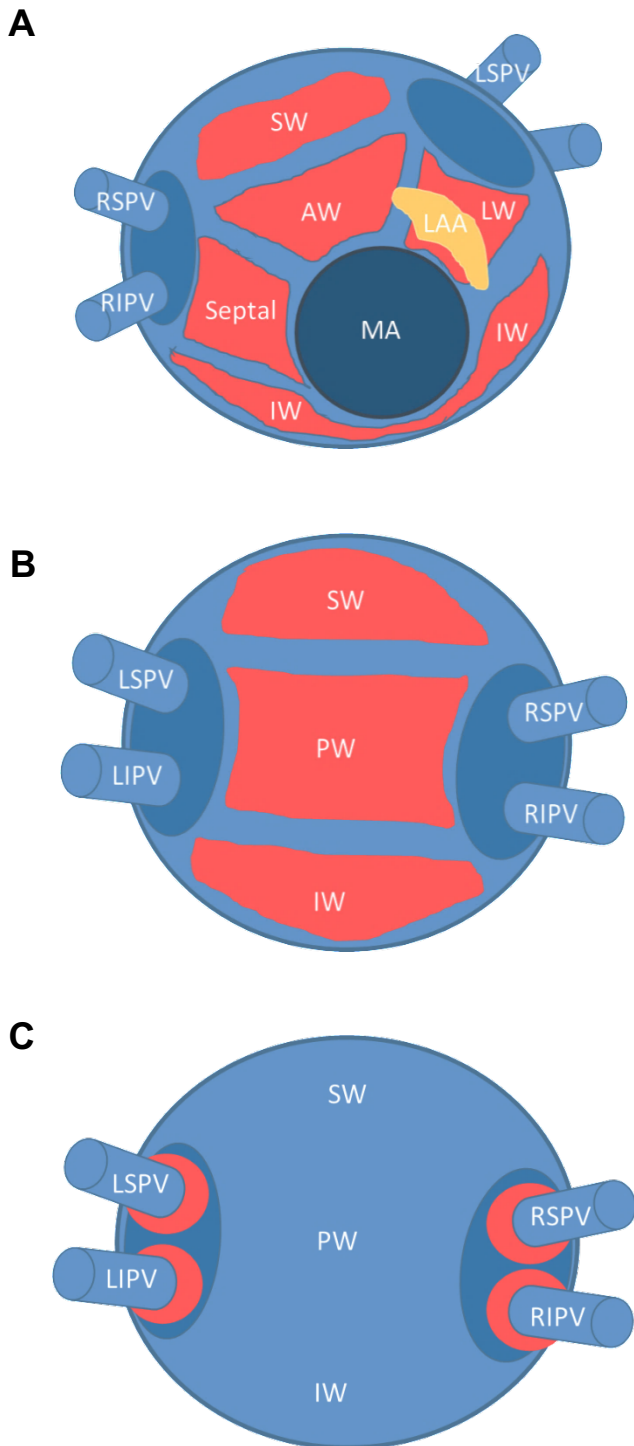


Figure S1: Assessment of LA bipolar voltage maps. LA segmentation. (A: Left Anterior Oblique 50° view; B – C: Posterior-Anterior view). MA, mitral annulus; AW, Anterior wall; SW, Superior wall; IW, Inferior wall; LW, Lateral wall; PW, Posterior wall; LSPV, left superior pulmonary vein; LIPV, left inferior pulmonary vein; RSPV, right superior pulmonary vein; RIPV, right inferior pulmonary vein.

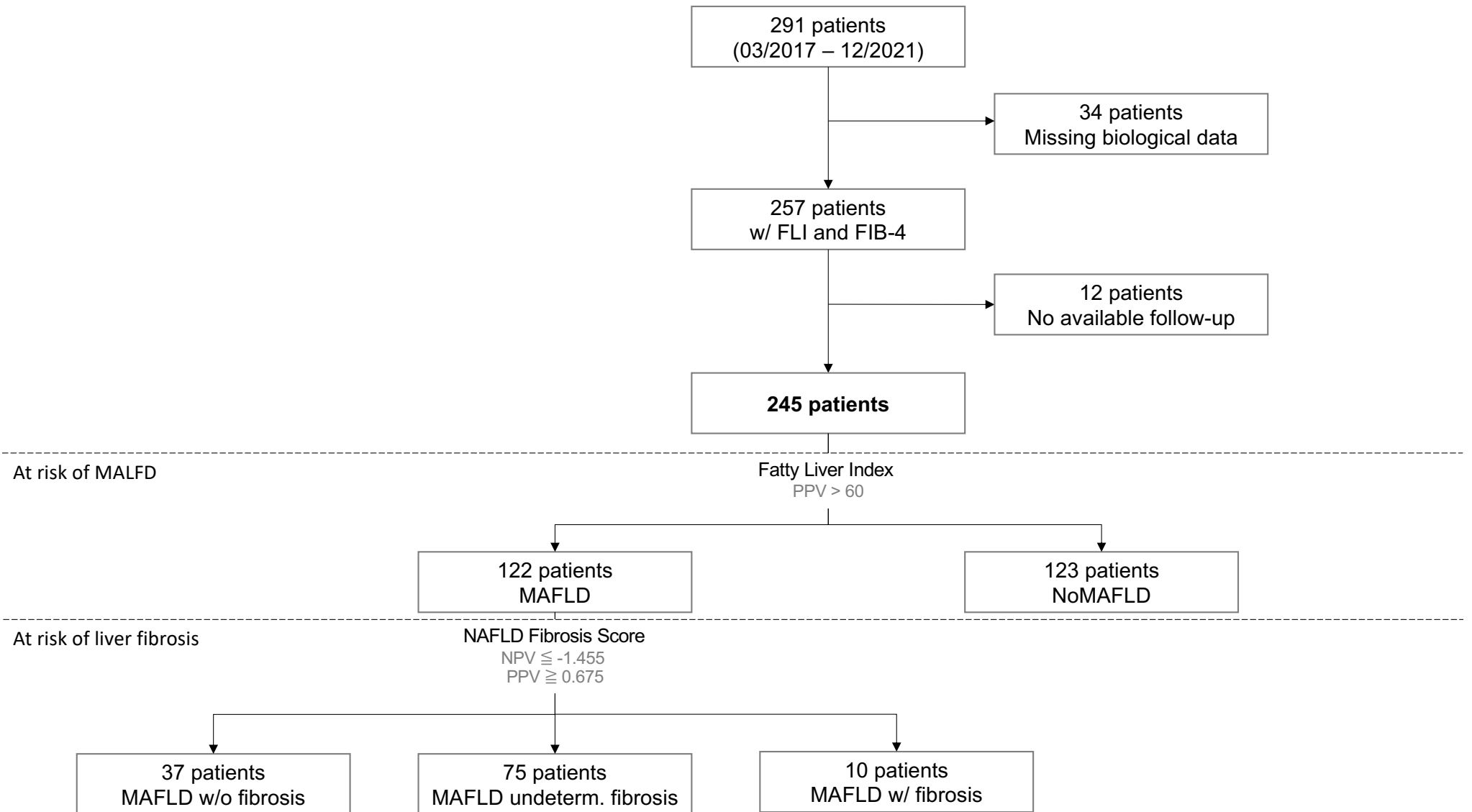
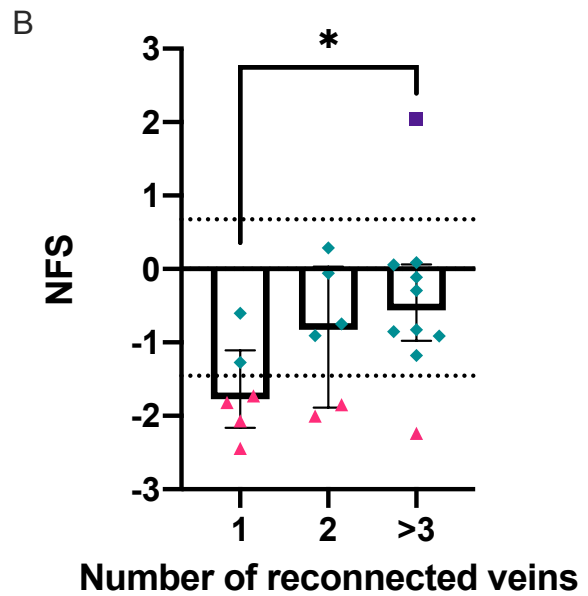
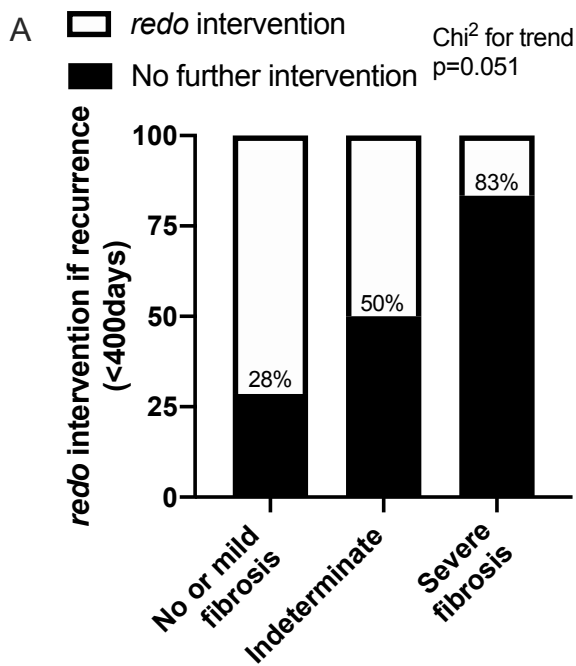


Table S1: Baseline characteristics of patients referred for heart surgery.

	NOMAFLD	MAFLD W/O FIBROSIS	MAFLD W/ SEVERE FIBROSIS
<i>n</i>	12	5	3
<i>Criteria</i>	FLI<60	FLI>60 ; NFS<-1.455	FLI>60 ; NFS>0.675
<i>Age (years)</i>	66.5 [47.3-71.5]	64.0 [54.0-73.0]	62.0 [59.0-75.0]
<i>BMI</i>	26.4 [23.0-28.9]	29.6 [28.2-33.1]	32.8 [31.3-54.9]
<i>HOMA-IR</i>	0.58 [0.46-1.19]	1.03 [0.83-1.60]	0.95 [0.43 - 2.46]
<i>SBP (mmHg)</i>	137 [125-149]	126 [121-139]	125 [120-141]
<i>DBP (mmHg)</i>	84 [78-92]	74 [73-84]	73 [63-92]
<i>LVEF (%)</i>	67 [60-73]	66 [59-69]	63 [60-67]
<i>LAA (cm²)</i>	24 [22.5-29.5]	32 [27-33.5]	41 [24-45]
<i>MVG_i</i>	51 [42-58]	55 [50-63]	59 [51-69]
<i>AoS, n</i>	9	4	2
<i>Mitral, n</i>	3	1	1

Abbreviations: BMI=Body mass index ; SBP=Systolic blood pressure ; DBP=Diastolic blood pressure; LVEF=Left ventricular ejection fraction ; LAA=Left atrial area ; AoS=Aortic stenosis.



NFS : NAFLD Fibrosis Score