

# THE LANCET

## Rheumatology

### Supplementary appendix

This appendix formed part of the original submission and has been peer reviewed. We post it as supplied by the authors.

Supplement to: Figueroa-Parra G, Gilbert EL, Valenzuela-Almada MO, et al. Risk of severe COVID-19 outcomes associated with rheumatoid arthritis and phenotypic subgroups: a retrospective, comparative, multicentre cohort study. *Lancet Rheumatol* 2022; published online Sept 13. [https://doi.org/10.1016/S2665-9913\(22\)00227-2](https://doi.org/10.1016/S2665-9913(22)00227-2).

## Supplementary material

Supplementary table 1.....	2
Supplementary table 2.....	3
Supplementary table 3.....	4
Supplementary table 4.....	6
Supplementary table 5.....	8
Supplementary table 6.....	10
Supplementary figure 1.....	11

**Supplementary table 1.** Risk of severe COVID-19 and secondary outcomes among patients with rheumatoid arthritis stratified by sex.

	Female		Male	
	Patients with RA n=421	Comparators n=2081	Patients with RA N=161	Comparators n=794
<b>Severe COVID-19, n (%)</b>	93 (22)	248 (12)	33 (21)	115 (14)
Follow-up time, person-days	29,788	165,358	11,623	61,192
Rate, per 1,000 days (95% CI)	3.12 (2.49, 3.76)	1.50 (1.31, 1.69)	2.84 (1.87, 3.81)	1.88 (1.54, 2.22)
Unadjusted, HR (95% CI)	2.03 (1.65, 2.50)	Ref.	1.46 (1.07, 1.98)	Ref.
Adjusted main model, HR (95% CI)	2.03 (1.62, 2.55)	Ref.	1.23 (0.88, 1.74)	Ref.
Adjusted mediators model, HR (95% CI)	1.92 (1.50, 2.46)	Ref.	1.12 (0.78, 1.59)	Ref.
<b>Hospitalization, n (%)</b>	90 (21)	241 (12)	31 (19)	114 (14)
Follow-up time, person-days	29,924	165,942	11,746	61,287
Rate, per 1,000 days (95% CI)	3.01 (2.39, 3.63)	1.45 (1.27, 1.64)	2.64 (1.71, 3.57)	1.86 (1.52, 2.20)
Unadjusted, HR (95% CI)	1.89 (1.55, 2.30)	Ref.	1.30 (0.95, 1.76)	Ref.
Adjusted main model, HR (95% CI)	1.84 (1.49, 2.26)	Ref.	1.11 (0.79, 1.55)	Ref.
Adjusted mediators model, HR (95% CI)	1.81 (1.46, 2.25)	Ref.	1.01 (0.71, 1.43)	Ref.
<b>Death, n (%)</b>	18 (4)	39 (2)	8 (5)	20 (3)
Follow-up time, person-days	36,791	184,491	13,980	70,132
Rate, per 1,000 days (95% CI)	0.49 (0.26, 0.72)	0.21 (0.15, 0.29)	0.57 (0.18, 0.97)	0.29 (0.16, 0.41)
Unadjusted, HR (95% CI)	2.48 (1.51, 4.08)	Ref.	1.99 (0.96, 4.13)	Ref.
Adjusted main model, HR (95% CI)	2.38 (1.36, 4.16)	Ref.	1.04 (0.47, 2.33)	Ref.
Adjusted mediators model, HR (95% CI)	2.25 (1.24, 4.10)	Ref.	0.69 (0.28, 1.73)	Ref.
<b>Mechanical ventilation, n (%)</b>	12 (3)	37 (2)	5 (3)	18 (2)
Follow-up time, person-days	36,882	184,116	14,064	69,974
Rate per 1,000 days, (95% CI)	0.33 (0.14, 0.51)	0.20 (0.14, 0.27)	0.36 (0.04, 0.67)	0.26 (0.14, 0.38)
Unadjusted, HR (95% CI)	1.60 (0.90, 2.83)	Ref.	1.37 (0.58, 3.27)	Ref.
Adjusted main model, HR (95% CI)	1.90 (0.95, 3.80)	Ref.	0.94 (0.37, 2.40)	Ref.
Adjusted mediators model, HR (95% CI)	1.70 (0.76, 3.79)	Ref.	0.50 (0.13, 1.85)	Ref.

CI: confidence interval; HR: hazard ratio.

Adjusted main model for age, sex, race, and smoking. Adjusted mediators model for age, sex, race, smoking, BMI, and Charlson comorbidity index (dichotomized as <2 or ≥ 2).

**Supplementary table 2.** Risk of severe COVID-19 and secondary outcomes among patients with rheumatoid arthritis who contracted COVID-19 before vaccines were available.

	<b>Patients with RA n=366</b>	<b>Comparators n=1807</b>
<b>Severe COVID-19, n (%)</b>	77 (21)	233 (13)
Follow-up time, person-days	26,290	141,876
Rate, per 1,000 days (95% CI)	2.93 (2.27, 3.58)	1.64 (1.43, 1.85)
Unadjusted, HR (95% CI)	1.72 (1.39, 2.13)	Ref.
Adjusted main model, HR (95% CI)	1.64 (1.30, 2.07)	Ref.
Adjusted mediators model, HR (95% CI)	1.49 (1.16, 1.91)	Ref.
<b>Hospitalization, n (%)</b>	73 (20)	228 (13)
Follow-up time, person-days	26,486	142,356
Rate, per 1,000 days (95% CI)	2.76 (2.12, 3.39)	1.60 (1.39, 1.81)
Unadjusted, HR (95% CI)	1.55 (1.26, 1.92)	Ref.
Adjusted main model, HR (95% CI)	1.49 (1.19, 1.87)	Ref.
Adjusted mediators model, HR (95% CI)	1.36 (1.07, 1.73)	Ref.
<b>Death, n (%)</b>	18 (5)	42 (2)
Follow-up time, person-days	31,793	159,512
Rate, per 1,000 days (95% CI)	0.57 (0.30, 0.83)	0.26 (0.18, 0.34)
Unadjusted, HR (95% CI)	2.20 (1.35, 3.60)	Ref.
Adjusted main model, HR (95% CI)	1.74 (1.01, 2.98)	Ref.
Adjusted mediators model, HR (95% CI)	1.53 (0.85, 2.76)	Ref.
<b>Mechanical ventilation, n (%)</b>	13 (4)	39 (2)
Follow-up time, person-days	31,849	159,346
Rate per 1,000 days, (95% CI)	0.41 (0.19, 0.63)	0.25 (0.17, 0.32)
Unadjusted, HR (95% CI)	1.64 (0.95, 2.82)	Ref.
Adjusted main model, HR (95% CI)	1.75 (0.93, 3.28)	Ref.
Adjusted mediators model, HR (95% CI)	1.44 (0.74, 2.80)	Ref.

CI: confidence interval; HR: hazard ratio.

Adjusted main model for age, sex, race, and smoking. Adjusted mediators model for age, sex, race, smoking, BMI, and Charlson comorbidity index (dichotomized as <2 or ≥ 2).

**Supplementary table 3.** Risk of severe COVID-19 and secondary outcomes by rheumatoid arthritis (RA) phenotype in comparison to their matched general population.

	<b>RA-ILD n=50</b>	<b>Comparators n=249</b>	<b>Seropositive n=388</b>	<b>Comparators n=1915</b>	<b>Erosive disease n=159</b>	<b>Comparators n=790</b>
<b>Severe COVID-19, n (%)</b>	25 (50)	46 (18)	84 (22)	224 (12)	41 (26)	120 (15)
Follow-up time, person-days	2,285	18,292	27,509	152,483	10,687	60,571
Rate, per 1,000 days (95% CI)	10.90 (6.70, 15.20)	2.50 (1.80, 3.20)	3.10 (2.40, 3.70)	1.50 (1.30, 1.70)	3.80 (2.70, 5.00)	2.00 (1.60, 2.30)
Unadjusted HR (95% CI)	2.89 (2.03, 4.11)	Ref.	2.00 (1.62, 2.47)	Ref.	2.05 (1.54, 2.73)	Ref.
Adjusted main model HR (95% CI)	2.50 (1.66, 3.77)	Ref.	1.97 (1.58, 2.46)	Ref.	1.93 (1.41, 2.63)	Ref.
Adjusted mediators model HR (95% CI)	2.52 (1.52, 4.17)	Ref.	1.89 (1.49, 2.40)	Ref.	2.03 (1.46, 2.84)	Ref.
<b>Hospitalization, n (%)</b>	24 (48)	45 (18)	82 (21)	221 (12)	40 (25)	115 (15)
Follow-up time, person-days	2,368	18,388	27,656	152,739	10,770	60,908
Rate, per 1,000 days, (95% CI)	10.10 (6.10, 14.20)	2.40 (1.70, 3.20)	3.00 (2.30, 3.60)	1.40 (1.30, 1.60)	3.70 (2.60, 4.90)	1.90 (1.50, 2.20)
Unadjusted HR (95% CI)	2.79 (1.97, 3.95)	Ref.	1.85 (1.52, 2.25)	Ref.	1.86 (1.41, 2.44)	Ref.
Adjusted main model HR (95% CI)	2.41 (1.60, 3.62)	Ref.	1.84 (1.49, 2.26)	Ref.	1.77 (1.32, 2.37)	Ref.
Adjusted mediators model HR (95% CI)	2.45 (1.49, 4.02)	Ref.	1.81 (1.46, 2.25)	Ref.	1.89 (1.40, 2.55)	Ref.
<b>Death, n (%)</b>	9 (18)	10 (4)	15 (4)	35 (2)	8 (5)	21 (3)
Follow-up time, person-days	3,877	21,696	33,916	169,998	13,747	69,694
Rate, per 1,000 days, (95% CI)	2.30 (0.80, 3.80)	0.50 (0.20, 0.70)	0.40 (0.20, 0.70)	0.20 (0.10, 0.30)	0.60 (0.20, 1.00)	0.30 (0.20, 0.40)
Unadjusted HR (95% CI)	6.34 (2.72, 14.78)	Ref.	2.34 (1.37, 4.01)	Ref.	2.20 (1.06, 4.56)	Ref.
Adjusted main model HR (95% CI)	5.83 (2.16, 15.70)	Ref.	1.91 (1.07, 3.40)	Ref.	2.16 (0.90, 5.16)	Ref.
Adjusted mediators model HR (95% CI)	5.63 (1.82, 17.45)	Ref.	1.22 (0.61, 2.44)	Ref.	2.44 (0.77, 7.71)	Ref.
<b>Mechanical ventilation, n (%)</b>	5 (10)	6 (2)	12 (3)	31 (2)	5 (3)	14 (2)
Follow-up time, person-days	4,077	21,908	33,920	169,709	13,877	69,926
Rate per 1,000 days, (95% CI)	1.20 (0.20, 2.30)	0.30 (0.10, 0.50)	0.40 (0.20, 0.60)	0.20 (0.10, 0.20)	0.40 (0.00, 0.70)	0.20 (0.10, 0.30)
Unadjusted HR (95% CI)	4.17 (1.54, 11.27)	Ref.	1.90 (1.07, 3.39)	Ref.	1.76 (0.71, 4.38)	Ref.
Adjusted main model HR (95% CI)	2.28 (0.48, 10.82)	Ref.	1.85 (0.95, 3.59)	Ref.	1.28 (0.48, 3.42)	Ref.

Adjusted mediators model HR (95% CI)	2.21 (0.52, 9.47)	Ref.	1.68 (0.82, 3.46)	Ref.	1.02 (0.40, 2.61)	Ref.
---	----------------------	------	----------------------	------	----------------------	------

CI: confidence interval; HR: hazard ratio.

Adjusted main model for age, sex, race, and smoking. Adjusted mediators model for age, sex, race, smoking, BMI, and Charlson comorbidity index (dichotomized as  $<2$  or  $\geq 2$ ).

\*Positivity either to rheumatoid factor or anti-CCP.

**Supplementary table 4:** Risk of severe COVID-19 among patients with mutually exclusive RA phenotypes.

<b>ILD+/Seropositive/Erosion+</b>	<b>Patients with RA N=13</b>	<b>Comparators N=65</b>
Event, n (%)	9 (69)	17 (26)
Follow-up time, person-days	373	4,353
Rate, per 1,000 days (95% CI)	24.13 (8.36, 39.89)	3.91 (2.05, 5.76)
RD, per 1,000 days (95% CI)	20.22 (4.35, 36.10)	-
Unadjusted model, HR (95% CI)	3.12 (1.84, 5.28)	Ref.
Adjusted main model, HR (95% CI)	2.69 (1.20, 6.02)	Ref.
<b>ILD+/Seropositive/Erosion-</b>	<b>Patients with RA N=29</b>	<b>Comparators N=144</b>
Event, n (%)	12 (41)	17 (12)
Follow-up time, person-days	1,550	11,414
Rate, per 1,000 days (95% CI)	7.74 (3.36, 12.12)	1.49 (0.78, 2.20)
RD, per 1,000 days (95% CI)	6.25 (1.82, 10.69)	-
Unadjusted model, HR (95% CI)	3.69 (2.11, 6.44)	Ref.
Adjusted main model, HR (95% CI)	4.95 (2.49, 9.82)	Ref.
<b>ILD+/Seronegative/Erosion+</b>	<b>Patients with RA N=1</b>	<b>Comparators N=5</b>
<i>Not Performed</i>		
<b>ILD+/Seronegative/Erosion-</b>	<b>Patients with RA N=7</b>	<b>Comparators N=35</b>
Event, n (%)	3 (43)	9 (26)
Follow-up time, person-days	362	2,343
Rate, per 1,000 days (95% CI)	8.29 (0.00, 17.67)	3.84 (1.33, 6.35)
RD, per 1,000 days (95% CI)	4.45 (-5.26, 14.15)	-
Unadjusted model, HR (95% CI)	1.43 (0.51, 4.02)	Ref.
Adjusted main model, HR (95% CI)	0.71 (0.12, 4.05)	Ref.
<b>ILD-/Seropositive/Erosion+</b>	<b>Patients with RA N=106</b>	<b>Comparators N=526</b>
Event, n (%)	21 (20)	82 (16)
Follow-up time, person-days	7,682	40,135
Rate, per 1,000 days (95% CI)	2.73 (1.56, 3.90)	2.04 (1.60, 2.49)
RD, per 1,000 days (95% CI)	0.69 (-0.56, 1.94)	-
Unadjusted model, HR (95% CI)	1.48 (0.99, 2.22)	Ref.

Adjusted main model, HR (95% CI)	1.52 (0.98, 2.36)	Ref.
<b>ILD-/Seropositive/Erosion-</b>	<b>Patients with RA N=240</b>	<b>Comparators N=1,180</b>
Event, n (%)	42 (18)	108 (9)
Follow-up time, person-days	17,904	96,581
Rate, per 1,000 days (95% CI)	2.35 (1.64, 3.06)	1.12 (0.91, 1.33)
RD, per 1,000 days (95% CI)	1.23 (0.49, 1.97)	-
Unadjusted model, HR (95% CI)	1.92 (1.40, 2.65)	Ref.
Adjusted main model, HR (95% CI)	1.91 (1.35, 2.69)	Ref.
<b>ILD-/Seronegative/Erosion+</b>	<b>Patients with RA N=36</b>	<b>Comparators N=179</b>
Event, n (%)	8 (22)	12 (7)
Follow-up time, person-days	2,542	15,083
Rate, per 1,000 days (95% CI)	3.15 (0.97, 5.33)	0.80 (0.35, 1.25)
RD, per 1,000 days (95% CI)	2.35 (0.12, 4.58)	-
Unadjusted model, HR (95% CI)	3.43 (1.56, 7.54)	Ref.
Adjusted main model, HR (95% CI)	4.45 (1.81, 10.96)	Ref.
<b>ILD-/Seronegative/Erosion-</b>	<b>Patients with RA N=136</b>	<b>Comparators N=672</b>
Event, n (%)	23 (17)	85 (13)
Follow-up time, person-days	10,304	52,918
Rate, per 1,000 days (95% CI)	2.23 (1.32, 3.14)	1.61 (1.26, 1.95)
RD, per 1,000 days (95% CI)	0.63 (-0.35, 1.60)	-
Unadjusted model, HR (95% CI)	1.40 (0.94, 2.08)	Ref.
Adjusted main model, HR (95% CI)	1.23 (0.80, 1.88)	Ref.

CI: confidence interval; HR: hazard ratio; RD: rate difference.

Adjusted main model for age, sex, race, and smoking.

Seropositivity either to rheumatoid factor or anti-CCP.



**Supplementary Table 5.** The association of rheumatoid arthritis (RA) phenotypes with the risk of severe COVID-19 and other outcomes.

	Patients with rheumatoid arthritis					
	ILD		Serostatus*		Bone erosions	
	Positive n=50	Negative n=532	Positive n=388	Negative n=180	Positive n=159	Negative n=423
<b>Severe COVID-19, n (%)</b>	25 (50)	101 (19)	84 (22)	35 (19)	41 (26)	85 (20)
Follow-up time, person-days	2,285	39,126	27,509	13,208	10,687	30,724
Rate, per 1,000 days (95% CI)	10.90 (6.70, 15.20)	2.60 (2.10, 3.10)	3.10 (2.40, 3.70)	2.60 (1.80, 3.50)	3.80 (2.70, 5.00)	2.80 (2.20, 3.40)
Unadjusted HR (95% CI)	3.43 (2.19, 5.36)	Ref.	1.21 (0.74, 2.00)	Ref.	1.37 (0.95, 1.97)	Ref.
Adjusted model 1 HR (95% CI)	2.61 (1.52, 4.47)	Ref.	1.21 (0.71, 2.05)	Ref.	1.16 (0.81, 1.66)	Ref.
Adjusted model 2 HR (95% CI)	2.45 (1.55, 3.87)	Ref.	1.11 (0.68, 1.81)	Ref.	1.07 (0.76, 1.50)	Ref.
<b>Hospitalization, n (%)</b>	24 (48)	97 (18)	82 (21)	33 (18)	40 (25)	81 (19)
Follow-up time, person-days	2,368	39,302	27,656	13,294	10,770	30,900
Rate, per 1,000 days, (95% CI)	10.10 (6.10, 14.20)	2.50 (2.00, 3.00)	3.00 (2.30, 3.60)	2.50 (1.60, 3.30)	3.70 (2.60, 4.90)	2.60 (2.10, 3.20)
Unadjusted HR (95% CI)	3.01 (1.89, 4.79)	Ref.	1.18 (0.73, 1.91)	Ref.	1.34 (0.94, 1.92)	Ref.
Adjusted model 1 HR (95% CI)	5.75 (0.69, 47.65)	Ref.	1.17 (0.70, 1.96)	Ref.	1.14 (0.80, 1.63)	Ref.
Adjusted model 2 HR (95% CI)	2.15 (1.29, 3.60)	Ref.	1.07 (0.67, 1.72)	Ref.	1.05 (0.75, 1.49)	Ref.
<b>Death, n (%)</b>	9 (18)	17 (3)	15 (4)	10 (6)	8 (5)	18 (4)
Follow-up time, person-days	3,877	46,894	33,916	15,621	13,747	37,024
Rate, per 1,000 days, (95% CI)	2.30 (0.80, 3.80)	0.40 (0.20, 0.50)	0.40 (0.20, 0.70)	0.60 (0.20, 1.00)	0.60 (0.20, 1.00)	0.50 (0.30, 0.70)
Unadjusted HR (95% CI)	8.81 (3.09, 25.09)	Ref.	0.62 (0.21, 1.82)	Ref.	1.20 (0.52, 2.75)	Ref.
Adjusted model 1 HR (95% CI)	7.71 (2.44, 24.37)	Ref.	0.64 (0.21, 1.82)	Ref.	0.94 (0.40, 2.23)	Ref.
Adjusted model 2 HR (95% CI)	7.16 (2.32, 22.07)	Ref.	0.62 (0.20, 1.99)	Ref.	0.88 (0.37, 2.09)	Ref.
<b>Mechanical ventilation, n (%)</b>	5 (10)	12 (2)	12 (3)	5 (3)	5 (3)	12 (3)
Follow-up time, person-days	4,077	46,869	33,920	15,766	13,877	37,069
Rate per 1,000 days, (95% CI)	1.20 (0.20, 2.30)	0.30 (0.10, 0.40)	0.40 (0.20, 0.60)	0.30 (0.00, 0.60)	0.40 (0.00, 0.70)	0.30 (0.10, 0.50)
Unadjusted HR (95% CI)	4.70	Ref.	1.19	Ref.	1.12	Ref.

	(1.49, 14.80)		(0.36, 3.87)		(0.39, 3.17)	
Adjusted model 1 HR (95% CI)	2.40 (0.76, 7.63)	Ref.	1.06 (0.24, 4.73)	Ref.	0.79 (0.26, 2.40)	Ref.
Adjusted model 2 HR (95% CI)	3.01 (0.90, 10.08)	Ref.	1.05 (0.32, 3.43)	Ref.	0.77 (0.27, 2.19)	Ref.

CI: confidence interval; HR: hazard ratio.

Model 1 adjusted for age, sex, race, and wave of infection. Model 2 adjusted for age, sex, b/tsDMARD (yes/no), and wave of infection.

\*Positivity either to rheumatoid factor or anti-CCP.

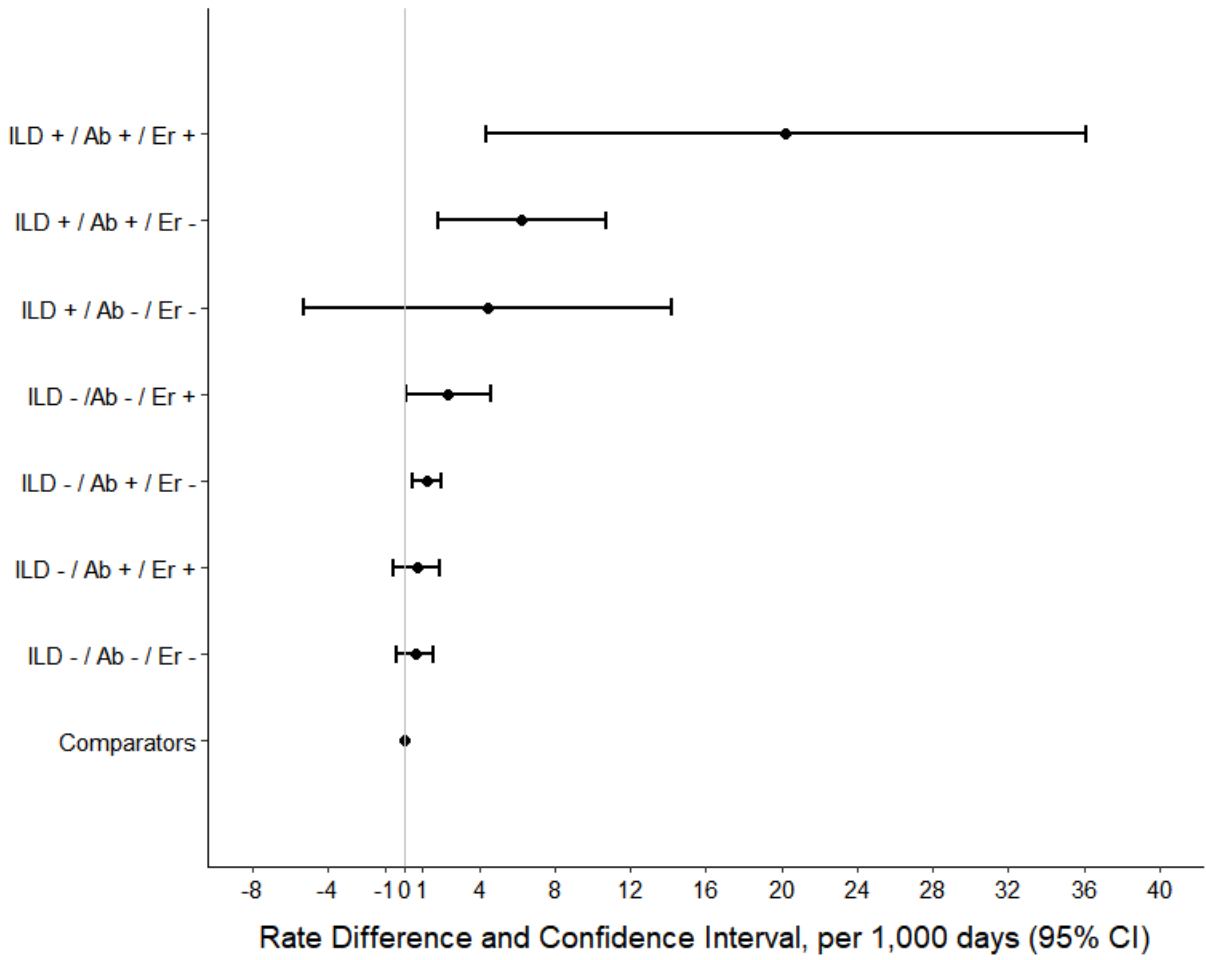
**Supplementary table 6.** Risk of severe COVID-19 and secondary outcomes among patients with rheumatoid arthritis stratified by rheumatoid factor and anti-CCP status.

	Rheumatoid factor		Anti-CCP	
	Positive n=302	Comparators n=1490	Positive n=312	Comparators n=1539
<b>Severe COVID-19, n (%)</b>	70 (23)	188 (13)	61 (20)	168 (11)
Follow-up time, person-days	21,026	117,463	22,684	123,555
Rate, per 1,000 days (95% CI)	3.30 (2.50, 4.10)	1.60 (1.37, 1.83)	2.70 (2.00, 3.40)	1.36 (1.15, 1.57)
Unadjusted, HR (95% CI)	1.99 (1.58, 2.50)	Ref.	1.97 (1.53, 2.53)	Ref.
Adjusted main model, HR (95% CI)	2.03 (1.59, 2.59)	Ref.	1.94 (1.49, 2.54)	Ref.
Adjusted mediators model, HR (95% CI)	1.96 (1.52, 2.55)	Ref.	1.81 (1.36, 2.42)	Ref.
<b>Hospitalization, n (%)</b>	68 (23)	185 (12)	60 (19)	167 (11)
Follow-up time, person-days	21,158	117,713	22,748	123,690
Rate, per 1,000 days (95% CI)	3.20 (2.50, 4.00)	1.57 (1.35, 1.80)	2.60 (2.00, 3.30)	1.35 (1.15, 1.55)
Unadjusted, HR (95% CI)	1.82 (1.46, 2.26)	Ref.	1.82 (1.44, 2.29)	Ref.
Adjusted main model, HR (95% CI)	1.86 (1.48, 2.34)	Ref.	1.82 (1.42, 2.34)	Ref.
Adjusted mediators model, HR (95% CI)	1.88 (1.48, 2.38)	Ref.	1.76 (1.34, 2.30)	Ref.
<b>Death, n (%)</b>	13 (4)	28 (2)	12 (4)	24 (2)
Follow-up time, person-days	26,278	132,180	27,296	136,844
Rate, per 1,000 days (95% CI)	0.50 (0.20, 0.80)	0.21 (0.13, 0.29)	0.40 (0.20, 0.70)	0.18 (0.11, 0.25)
Unadjusted, HR (95% CI)	2.54 (1.42, 4.54)	Ref.	2.67 (1.45, 4.91)	Ref.
Adjusted main model, HR (95% CI)	2.01 (1.03, 3.91)	Ref.	2.16 (1.08, 4.33)	Ref.
Adjusted mediators model, HR (95% CI)	1.22 (0.59, 2.52)	Ref.	1.48 (0.63, 3.46)	Ref.
<b>Mechanical ventilation, n (%)</b>	11 (4)	27 (2)	10 (3)	26 (2)
Follow-up time, person-days	26,266	131,815	27,253	136,310
Rate per 1,000 days, (95% CI)	0.40 (0.20, 0.70)	0.21 (0.13, 0.28)	0.40 (0.10, 0.60)	0.19 (0.12, 0.26)
Unadjusted, HR (95% CI)	2.00 (1.09, 3.66)	Ref.	1.90 (1.01, 3.56)	Ref.
Adjusted main model, HR (95% CI)	1.99 (0.98, 4.03)	Ref.	1.81 (0.82, 3.99)	Ref.
Adjusted mediators model, HR (95% CI)	1.86 (0.84, 4.11)	Ref.	2.22 (0.92, 5.32)	Ref.

CI: confidence interval; HR: hazard ratio.

Adjusted main model for age, race, and smoking. Adjusted mediators model for age, race, smoking, BMI, and Charlson comorbidity index (dichotomized as <2 or ≥ 2).

**Supplementary figure 1.** Rate difference of RA phenotypic subgroups vs matched comparators for severe outcomes.



Ab: Serostatus; Er: Bone erosions; ILD: Interstitial Lung Disease.