

1 **Supplementary Materials for**

2
3 **Characterization of entry pathways, species-specific ACE2 residues determining entry, and**
4 **antibody neutralization evasion of Omicron BA.1, BA.1.1, BA.2, and BA.3 variants**

5
6 Sabari Nath Neerukonda, Richard Wang, Russell Vassell, Haseebullah Baha, Sabrina Lusvarghi,
7 Shufeng Liu, Tony Wang, Carol D. Weiss *, and Wei Wang *

8
9 US Food and Drug Administration, Office of Vaccine Research and Review, Center for
10 Biologics Evaluation, Research and Review, Silver Spring, Maryland, United States of America

11
12 ***: Correspondence:** wei.wang@fda.hhs.gov (W.W) and carol.weiss@fda.hhs.gov (C.D.W)

13
14
15
16 **This PDF file includes:**

17 Supplementary Figures and Figure legends

Supplementary Figures and Figure legends

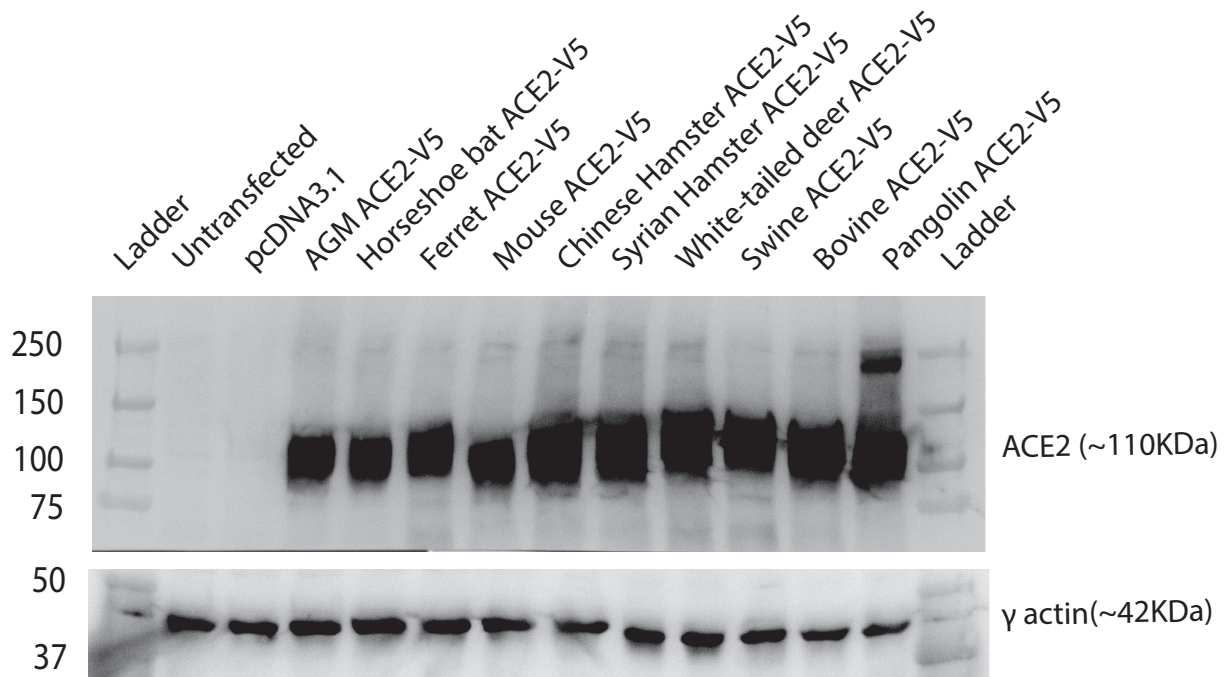


Figure S1. Transient expression of variant species ACE2. Western blotting of V5-tagged ACE2 proteins belonging to different species using Anti-V5 Tag antibody. Cellular control is γ -actin.

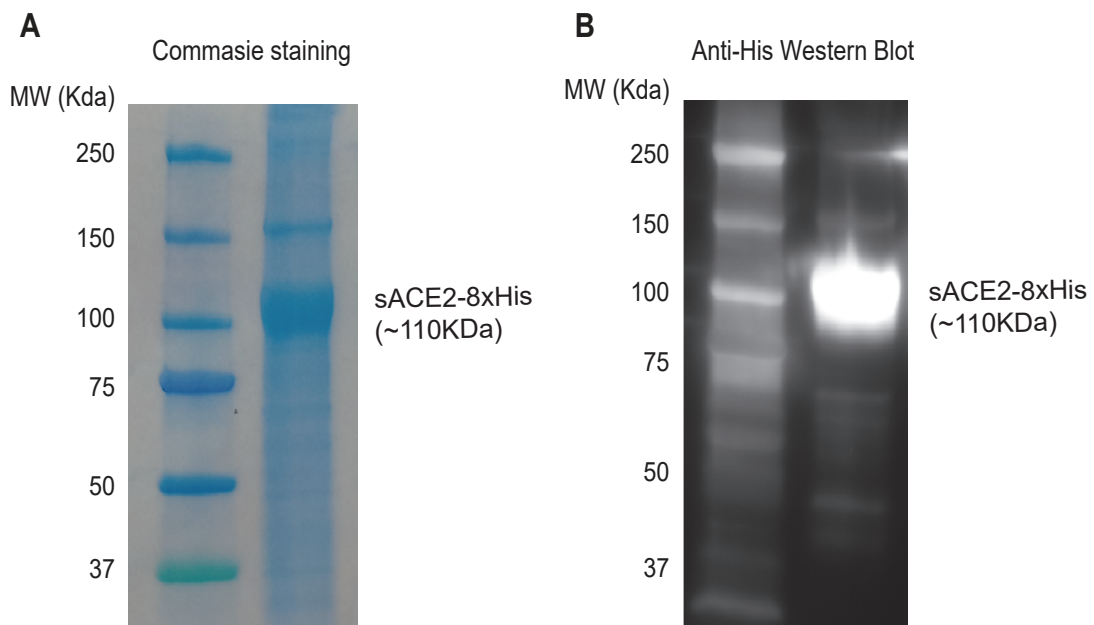


Figure S2. The detection of purified soluble human ACE2. **A.** Coomassie staining of purified soluble ACE2 (sACE2-8XHis) protein. **B.** Western blotting of sACE2-8XHis protein using Anti-6xHis Tag antibody.