

Supplementary Figure 1. CRISPR Screen Workflow.

Flowchart illustrating the workflow and timeline to generate CRISPR library and necessary validation steps, including the generation of BV2-dCas9-VP64 cells and their validation.

Supplemental Figure 2. Comparison of MNV CRISPRa screens.

A) A heat map showing enrichment of genes from the current CRISPRa screens performed in BV2 cells and a previously conducted CRISPRa screen in HeLa-CD300lf with indicated MNV strains. Genes are color-coded based upon their z-score for comparison across differential screening conditions. The genes TBX19 and MROH3 (black boxes) were absent in the library Calabrese while present in Caprano. The genes Obox6 and Olfr290 (black boxes) are murine genes without human homologues.

B) Gene set enrichment analysis (GSEA) was performed on the top genes in MNV CRISPRa screens across the four conditions as indicated by color. Analysis of genes against GO terms is presented in a bubble plot where bubble size represents gene ratio.

Supplemental Figure 3. Coverage maps of deep sequencing of MNV populations.

Alignment of the sequencing reads to the MNVCW3 (left) or MNVCR6 (right) genome for the six individual passaging experiments as indicated. The y-axis depicts sequencing coverage per position. The x-axis denotes the nucleotide position in the genome a diagram of the protein coding regions below.

Supplemental Figure 4. The NS6-7 cleavage sequence is highly conserved amongst MNV strains

A) Sequence alignment of the NS6-7 junction from over 70 MNV strains in Genbank.

B) A sequence logo of the NS6-7 junction from the MNV sequences in **A**.

Supplemental Table 1. BV2 CRISPRa Read Counts

Supplemental Table 2. Analysis output of BV2 CRISPRa screens

Supplemental Table 3. GSEA analysis of MNV CRISPRa screens

Supplemental Table 4 . HeLa-CD300lf CRISPRa Read Counts

Supplemental Table 5. List of sgRNA constructs used in this study

Supplemental Table 6. Mutational analysis of MNV passaging experiments in Trim7 expressing cells

Supplemental Figure 1



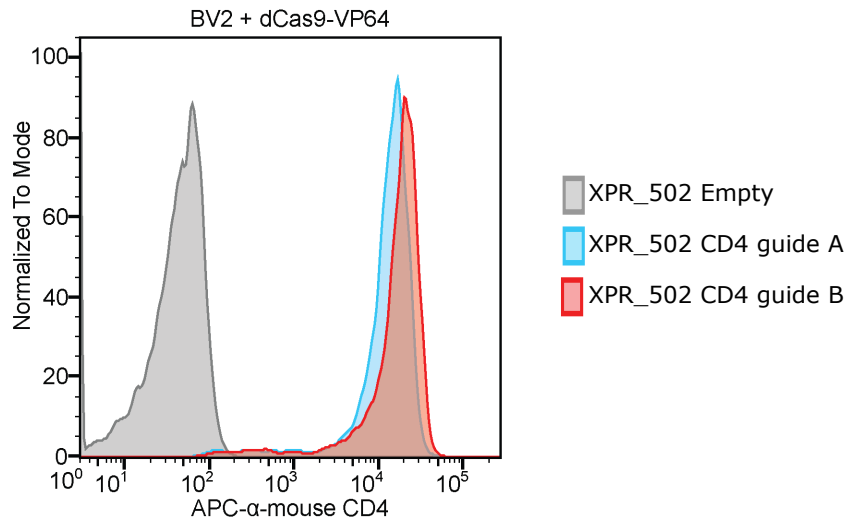
Transduce BV2 cells with dCas9
dCas9-VP64_Blast
Select with Blasticidin



Transduce BV2 cells with Reporter Assay
XPR_502 vector, Cd4 sgRNAs
or
XPR_502 vector, empty
Select with Puromycin



Cytometric assessment of dCas9 activity



Day
0



Transduce dCas9-VP64_Blast BV2 cells with Caprano
sgRNA library in XPR_502
Gene Set A
Gene Set B
Select with Puromycin

Day
5



Split to infection arms
MNV^{CW3}
MNV^{CR6}

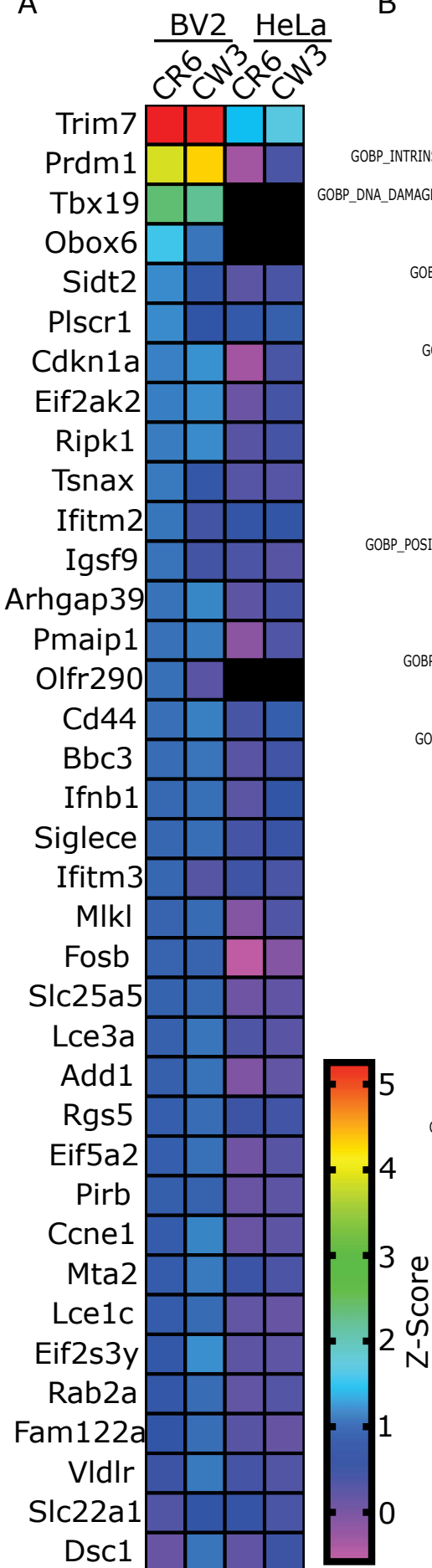
Day
16+



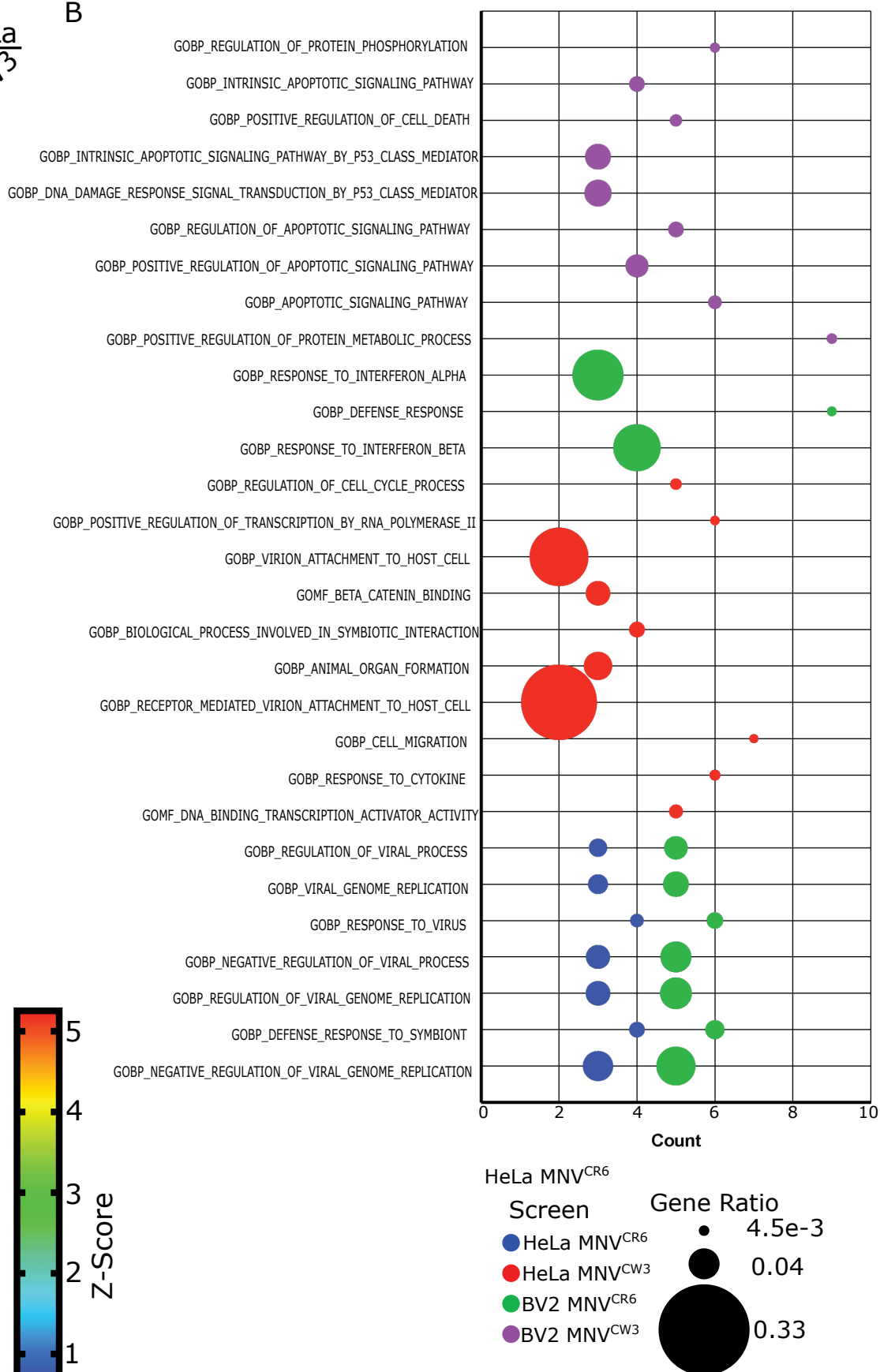
Pellet screen
Genomic DNA extraction
PCR of sgRNAs
NextGen Sequencing

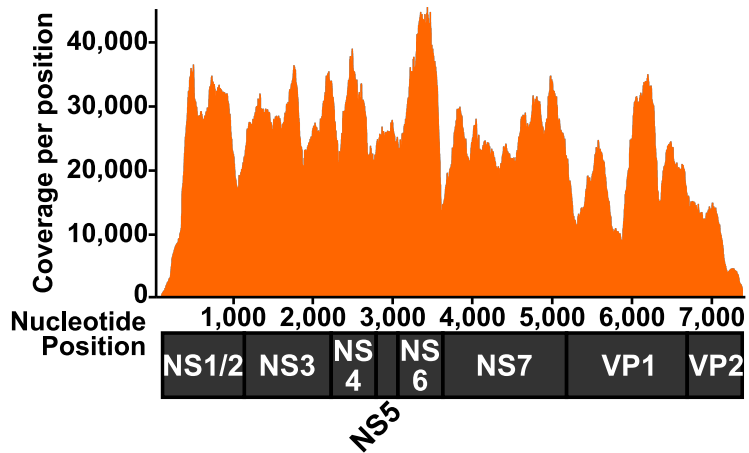
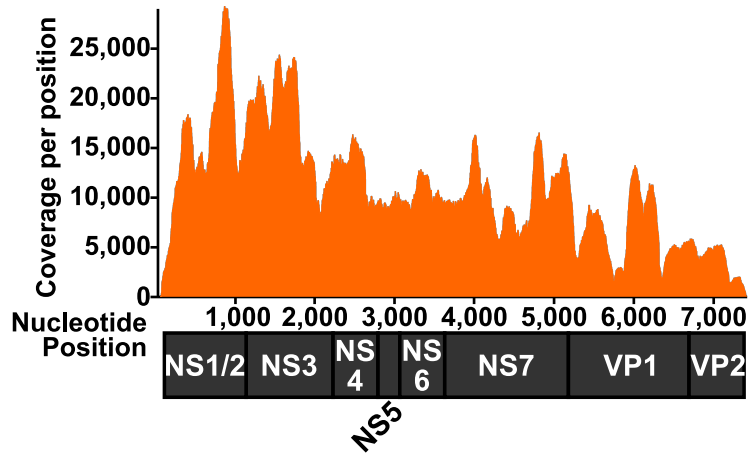
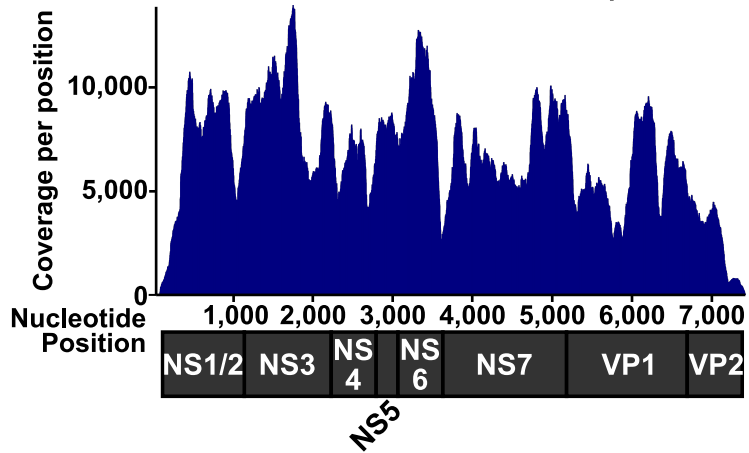
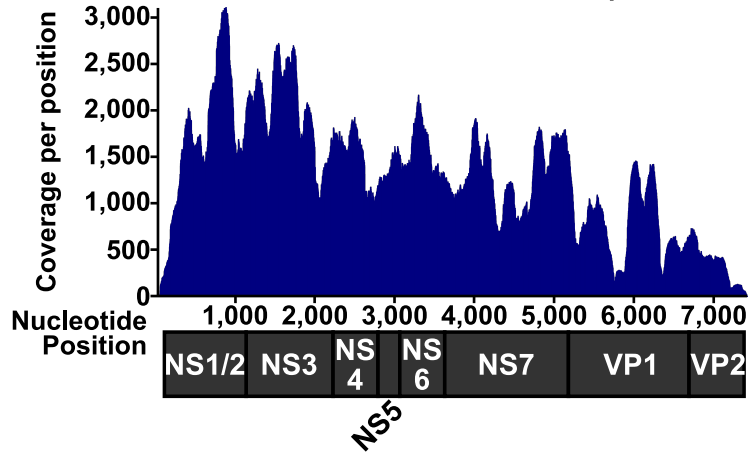
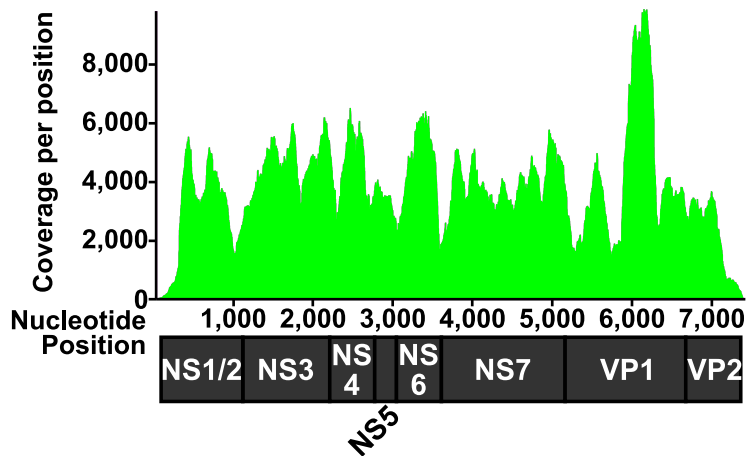
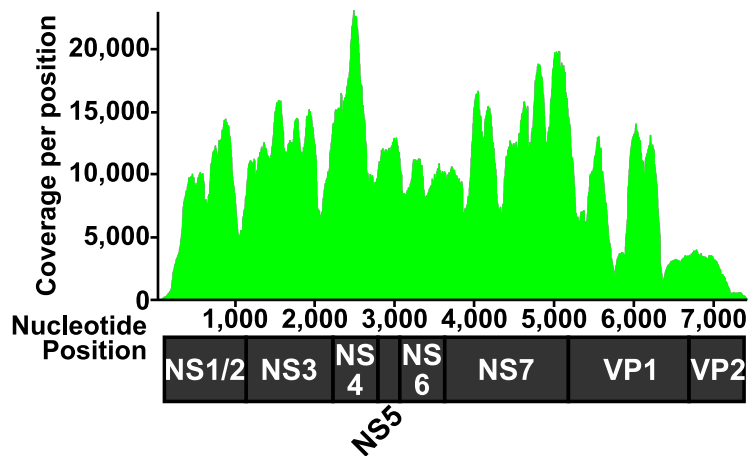
Supplemental Figure 2

A



B



Supplemental Figure 3**MNV^{CW3} + HeLa-CD300lf-Trim7 Replicate A****MNV^{CR6} + HeLa-CD300lf-Trim7 Replicate A****MNV^{CW3} + HeLa-CD300lf-Trim7 Replicate B****MNV^{CR6} + HeLa-CD300lf-Trim7 Replicate B****MNV^{CW3} + BV2-Trim7****MNV^{CR6} + BV2-Trim7**

Supplemental Figure 4

A

Genbank NS6 NS7

```
ABS29274.1 VYKKGNTWVIGVHVAATRSNGTVIAATHGEPTEALEFQGGPMLPRPSGTYAGLPIADY
ABS29272.1 VYKKGNTWVIGVHVAATRSNGTVIAATHGEPTEALEFQGGPMLPRPSGTYAGLPIADY
ACS70958.1 VYKKGNTWVIGVHVAATRSNGTVIAATHGEPTEALEFQGGPMLPRPSGTYAGLPIADY
ABU55594.1 VYKKGNTWVIGVHVAATRSNGTVIAATHGEPTEALEFQGGPMLPRPSGTYAGLPIADY
ABU55603.1 VYKKGNTWVIGVHVAATRSNGTVIAATHGEPTEALEFQGGPMLPRPSGTYAGLPIADY
ABU55543.1 VYKKGNTWVIGVHVAATRSNGTVIAATHGEPTEALEFQGGPMLPRPSGTYAGLPIADY
ABU55540.1 VYKKGNTWVIGVHVAATRSNGTVIAATHGEPTEALEFQGGPMLPRPSGTYAGLPIADY
ABU55558.1 VYKKGNTWVIGVHVAATRSNGTVIAATHGEPTEALEFQGGPMLPRPSGTYAGLPIADY
ABU55546.1 VYKKGNTWVIGVHVAATRSNGTVIAATHGEPTEALEFQGGPMLPRPSGTYAGLPIADY
ABU55549.1 VYKKGNTWVIGVHVAATRSNGTVIAATHGEPTEALEFQGGPMLPRPSGTYAGLPIADY
AA063098.2 VYKKGNTWVIGVHVAATRSNGTVIAATHGEPTEALEFQGGPMLPRPSGTYAGLPIADY
ABU55561.1 VYKKGNTWVIGVHVAATRSNGTVIAATHGEPTEALEFQGGPMLPRPSGTYAGLPIADY
ABU55555.1 VYKKGNTWVIGVHVAATRSNGTVIAATHGEPTEALEFQGGPMLPRPSGTYAGLPIADY
ABU55552.1 VYKKGNTWVIGVHVAATRSNGTVIAATHGEPTEALEFQGGPMLPRPSGTYAGLPIADY
ABJ98943.1 VYKKGNTWVIGVHVAATRSNGTVIAATHGEPTEALEFQGGPMLPRPSGTYAGLPIADY
AJZ71463.1 VYKKGNTWVIGVHVAATRSNGTVIAATHGEPTEALEFQGGPMLPRPSGTYAGLPIADY
AG059889.1 VYKKGNTWVIGVHVAATRSNGTVIAATHGEPTEALEFQGGPMLPRPSGTYAGLPIADY
ABB90153.1 VYKKGNTWVIGVHVAATRSNGTVIAATHGEPTEALEFQGGPMLPRPSGTYAGLPIADY
ABU55564.1 VYKKGNTWVIGVHVAATRSNGTVIAATHGEPTEALEFQGGPMLPRPSGTYAGLPIADY
ABU55621.1 VYKKGNTWVIGVHVAATRSNGTVIAATHGEPTEALEFQGGPMLPRPSGTYAGLPIADY
ABU55624.1 VYKKGNTWVIGVHVAATRSNGTVIAATHGEPTEALEFQGGPMLPRPSGTYAGLPIADY
AHK24787.1 VYKKGNTWVIGVHVAATRSNGTVIAATHGEPTEALEFQGGPMLPRPSGTYAGLPIADY
AHK24790.1 VYKKGNTWVIGVHVAATRSNGTVIAATHGEPTEALEFQGGPMLPRPSGTYAGLPIADY
ABU55627.1 VYKKGNTWVIGVHVAATRSNGTVIAATHGEPTEALEFQGGPMLPRPSGTYAGLPIADY
ALS39668.1 VYKKGNTWVIGVHVAATRSNGTVIAATHGEPTEALEFQGGPMLPRPSGTYAGLPIADY
ABI95834.1 VYKKGNTWVIGVHVAATRSNGTVIAATHGEPTEALEFQGGPMLPRPSGTYAGLPIADY
ABP99037.1 VYKKGNTWVIGVHVAATRSNGTVIAATHGEPTEALEFQGGPMLPRPSGTYAGLPIADY
AEA07711.1 VYKKGNTWVIGVHVAATRSNGTVIAATHGEPTEALEFQGGPMLPRPSGTYAGLPIADY
ABU55612.1 VYKKGNTWVIGVHVAATRSNGTVIAATHGEPTEALEFQGGPMLPRPSGTYAGLPIADY
ABU55615.1 VYKKGNTWVIGVHVAATRSNGTVIAATHGEPTEALEFQGGPMLPRPSGTYAGLPIADY
ABU55618.1 VYKKGNTWVIGVHVAATRSNGTVIAATHGEPTEALEFQGGPMLPRPSGTYAGLPIADY
ACJ72215.1 VYKKGNTWVIGVHVAATRSNGTVIAATHGEPTEALEFQGGPMLPRPSGTYAGLPIADY
AF084034.1 VYKKGNTWVIGVHVAATRSNGTVIAATHGEPTEALEFQGGPMLPRPSGTYAGLPIADY
ACJ72218.1 VYKKGNTWVIGVHVAATRSNGTVIAATHGEPTEALEFQGGPMLPRPSGTYAGLPIADY
ABU55570.1 VYKKGNTWVIGVHVAATRSNGTVIAATHGEPTEALEFQGGPMLPRPSGTYAGLPIADY
ABU55591.1 VYKKGNTWVIGVHVAATRSNGTVIAATHGEPTEALEFQGGPMLPRPSGTYAGLPIADY
ABU55567.1 VYKKGNTWVIGVHVAATRSNGTVIAATHGEPTEALEFQGGPMLPRPSGTYAGLPIADY
ABU55582.1 VYKKGNTWVIGVHVAATRSNGTVIAATHGEPTEALEFQGGPMLPRPSGTYAGLPIADY
ATI21290.1 VHKKGNTWVVLGVHVAATRSNGTVIAATQGEPTLEALELQGS-LPRPTGTYAGLPIADY
ABU55588.1 VYKKGNTWVIGVHVAATRSNGTVIAATHGEPTEALEFQGGPMLPRPSGTYAGLPIADY
ABU55585.1 VYKKGNTWVIGVHVAATRSNGTVIAATHGEPTEALEFQGGPMLPRPSGTYAGLPIADY
AOH87329.1 VYKKGNTWVIGVHVAATRSNGTVIAATHGEPTEALEFQGGPMLPRPSGTYAGLPIADY
ABU55573.1 VYKKGNTWVIGVHVAATRSNGTVIAATHGEPTEALEFQGGPMLPRPSGTYAGLPIADY
AJZ71460.1 VYKKGNTWVIGVHVAATRSNGTVIAATHGEPTEALEFQGGPMLPRPSGTYAGLPIADY
AOH87333.1 VYKKGNTWVIGVHVAATRSNGTVIAATHGEPTEALEFQGGPMLPRPSGTYAGLPIADY
ABU55576.1 VYKKGNTWVIGVHVAATRSNGTVIAATHGEPTEALEFQGGPMLPRPSGTYAGLPIADY
ABU55579.1 VYKKGNTWVIGVHVAATRSNGTVIAATHGEPTEALEFQGGPMLPRPSGTYAGLPIADY
AVC63616.1 VYKKGNTWVIGVHVAATRSNGTVIAATHGEPTEALEFQGGPMLPRPSGTYAGLPIADY
ABB02422.1 VYKKGNTWVIGVHVAATRSNGTVIAATHGEPTEALEFQGGPMLPRPSGTYAGLPIADY
AVY51162.1 VYKKGNTWVIGVHVAATRSNGTVIAATHGEPTEALEFQGGPMLPRPSGTYAGLPIADY
AEE10026.1 VYKKGNTWVIGVHVAATRSNGTVIAATHGEPTEALEFQGGPMLPRPSGTYAGLPIADY
ABU55609.1 VYKKGNTWVIGVHVAATRSNGTVIAATHGEPTEALEFQGGPMLPRPSGTYAGLPIADY
ABP99040.1 VYKKGNTWVIGVHVAATRSNGTVIAATHGEPTEALEFQGGPMLPRPSGTYAGLPIADY
AEE10023.1 VYKKGNTWVIGVHVAATRSNGTVIAATHGEPTEALEFQGGPMLPRPSGTYAGLPIADY
ABU55606.1 VYKKGNTWVIGVHVAATRSNGTVIAATHGEPTEALEFQGGPMLPRPSGTYAGLPIADY
AEY83582.1 VYKKGNTWVIGVHVAATRSNGTVIAATHGEPTEALEFQGGPMLPRPSGTYAGLPIADY
ABB02416.1 VYKKGNTWVIGVHVAATRSNGTVIAATHGEPTEALEFQGGPMLPRPSGTYAGLPIADY
AEE10014.1 VYKKGNTWVIGVHVAATRSNGTVIAATHGEPTEALEFQGGPMLPRPSGTYAGLPIADY
AEE10011.1 VYKKGNTWVIGVHVAATRSNGTVIAATHGEPTEALEFQGGPMLPRPSGTYAGLPIADY
AEE10017.1 VYKKGNTWVIGVHVAATRSNGTVIAATHGEPTEALEFQGGPMLPRPSGTYAGLPIADY
AEE10020.1 VYKKGNTWVIGVHVAATRSNGTVIAATHGEPTEALEFQGGPMLPRPSGTYAGLPIADY
AEE10008.1 VYKKGNTWVIGVHVAATRSNGTVIAATHGEPTEALEFQGGPMLPRPSGTYAGLPIADY
AEE10005.1 VYKKGNTWVIGVHVAATRSNGTVIAATHGEPTEALEFQGGPMLPRPSGTYAGLPIADY
AEE09999.1 VYKKGNTWVIGVHVAATRSNGTVIAATHGEPTEALEFQGGPMLPRPSGTYAGLPIADY
AEE10002.1 VYKKGNTWVIGVHVAATRSNGTVIAATHGEPTEALEFQGGPMLPRPSGTYAGLPIADY
Q0F88697.1 VYKKGNTWVIGVHVAATRSNGTVIAATHGEPTEALEFQGGPMLPRPSGTYAGLPIADY
ABU55597.1 VYKKGNTWVIGVHVAATRSNGTVIAATHGEPTEALEFQGGPMLPRPSGTYAGLPIADY
ABU55600.1 VYKKGNTWVIGVHVAATRSNGTVIAATHGEPTEALEFQGGPMLPRPSGTYAGLPIADY
BAH04373.1 VYKKGNTWVIGVHVAATRSNGTVIAATHGEPTEALEFQGGPMLPRPSGTYAGLPIADY
BAH04376.1 VYKKGNTWVIGVHVAATRSNGTVIAATHGEPTEALEFQGGPMLPRPSGTYAGLPIADY
BAL60899.1 VYKKGNTWVIGVHVAATRSNGTVIAATHGEPTEALEFQGGPMLPRPSGTYAGLPIADY
ATZ76933.1 VYKKGNTWVIGVHVAATRSNGTVIAATHGEPTEALEFQGGPMLPRPSGTYAGLPIADY
AWB14625.1 VYKKGNTWVIGVHVAATRSNGTVIAATHGEPTEALEFQGGPMLPRPSGTYAGLPIADY
AIY30134.1 VYKKGNTWVIGVHVAATRSNGTVIAATHGEPTEALEFQGGPMLPRPSGTYAGLPIADY
AQY60267.1 VYKKGNTWVIGVHVAATRSNGTVIAATHGEPTEALEFQGGPMLPRPSGTYAGLPIADY
QPI71229.1 VYKKGNTWVIGVHVAATRSNGTVIAATHGEPTEALEFQGGPMLPRPSGTYAGLPIADY
ABB02419.1 VYKKGNTWVIGVHVAATRSNGTVIAATHGEPTEALEFQGGPMLPRPSGTYAGLPIADY
AFD62271.1 VYKKGNTWVIGVHVAATRSNGTVIAATHGEPTEALEFQGGPMLPRPSGTYAGLPIADY
AG061997.1 VYKKGNTWVIGVHVAATRSNGTVIAATHGEPTEALEFQGGPMLPRPSGTYAGLPIADY
```

B

