

iScience, Volume 25

Supplemental information

Multifaceted roles of GRAS transcription

factors in growth and stress

responses in plants

Vandana Jaiswal, Mrinalini Kakkar, Priya Kumari, Gaurav Zinta, Vijay Gahlaut, and Sanjay Kumar

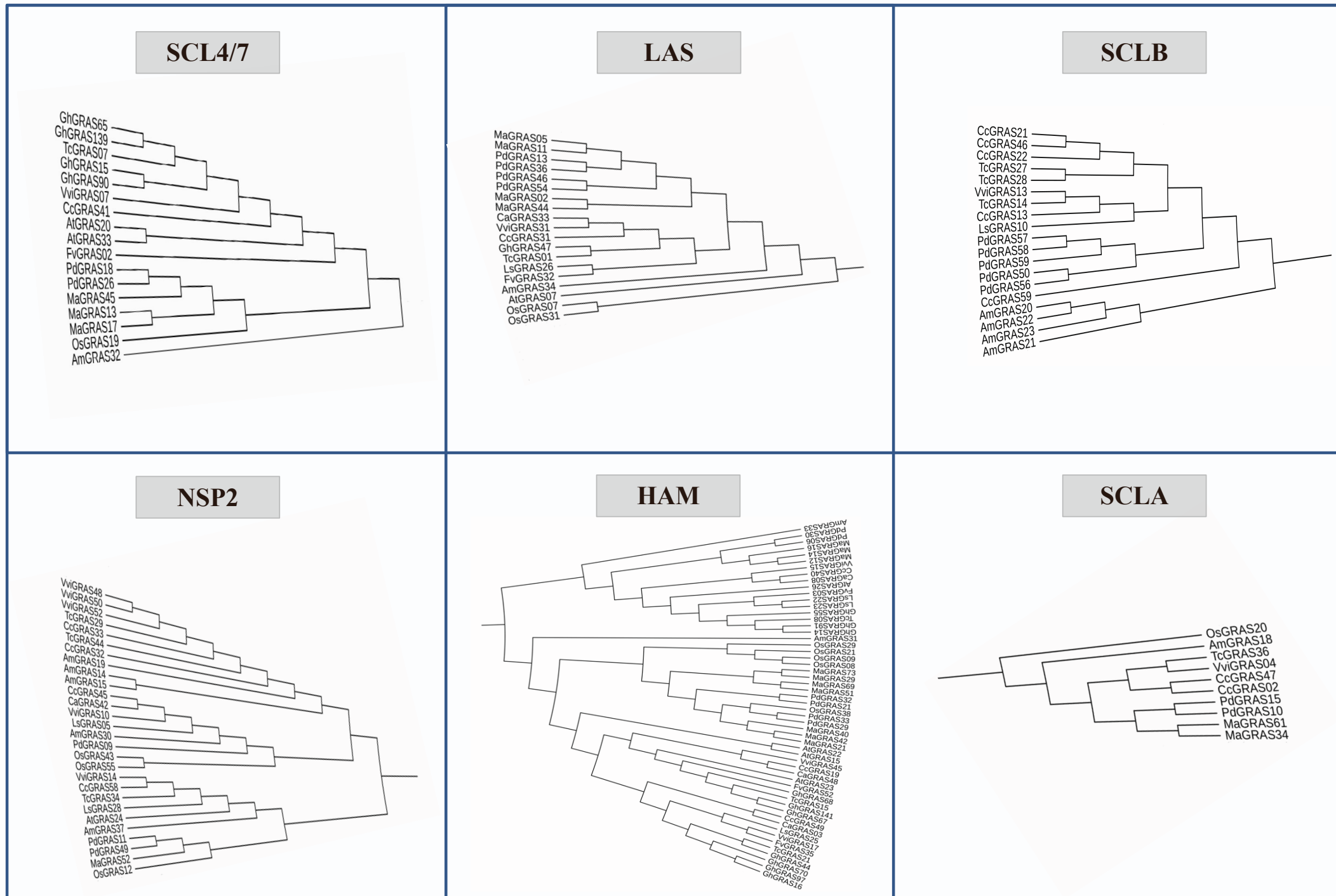


Figure S1. Details zoomed view of individual clade belongs to six different GRAS sub-families (SCL4/7, LAS, SCLB, NSP2, HAM and SCLA) as represented in Figure 2, Related to Figure 2.

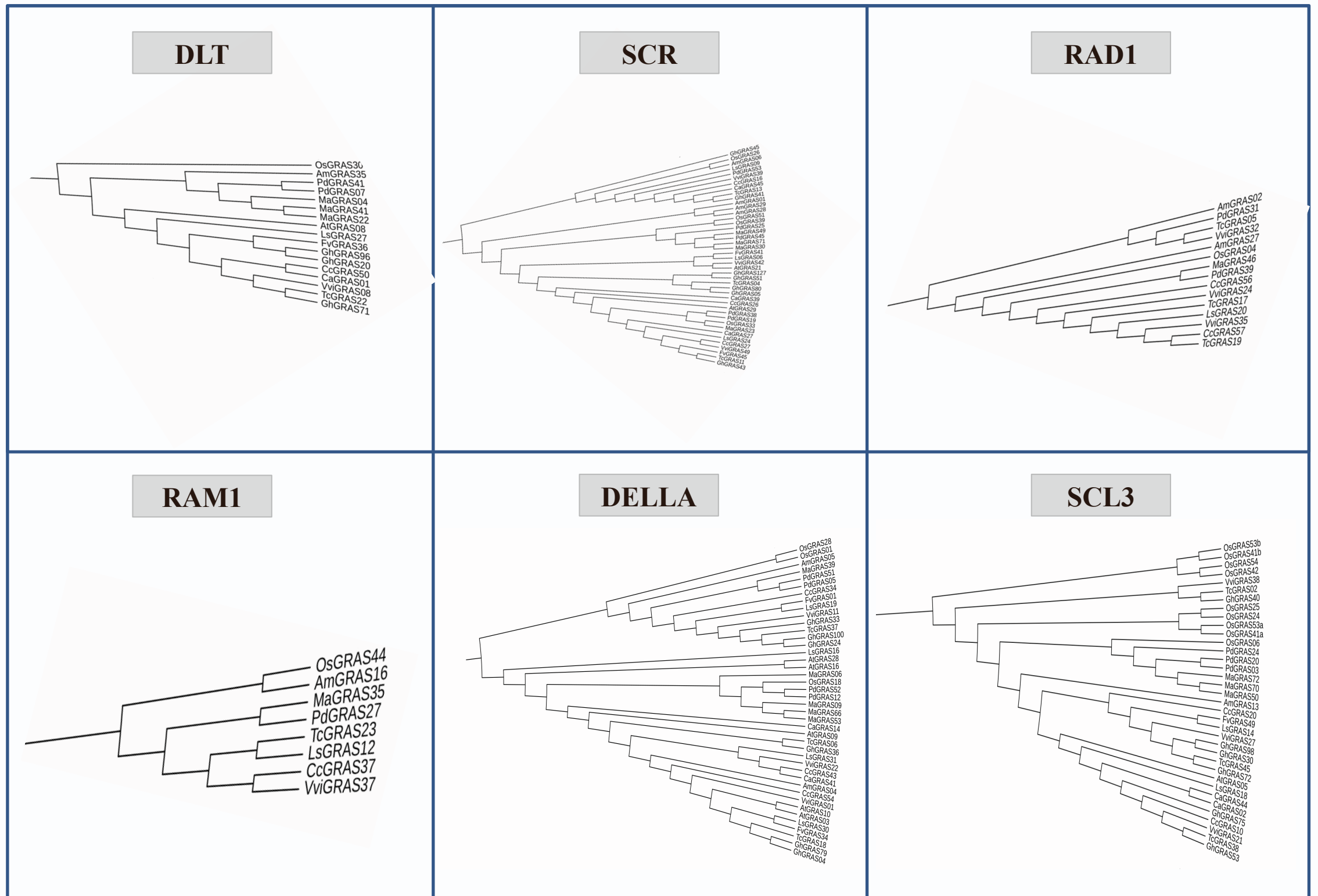


Figure S2. Details zoomed view of individual clade belongs to six different GRAS sub-families (DLT, SCR, RAD1, RAM1, DELLA and SCL3) as represented in Figure 2, Related to Figure 2.

