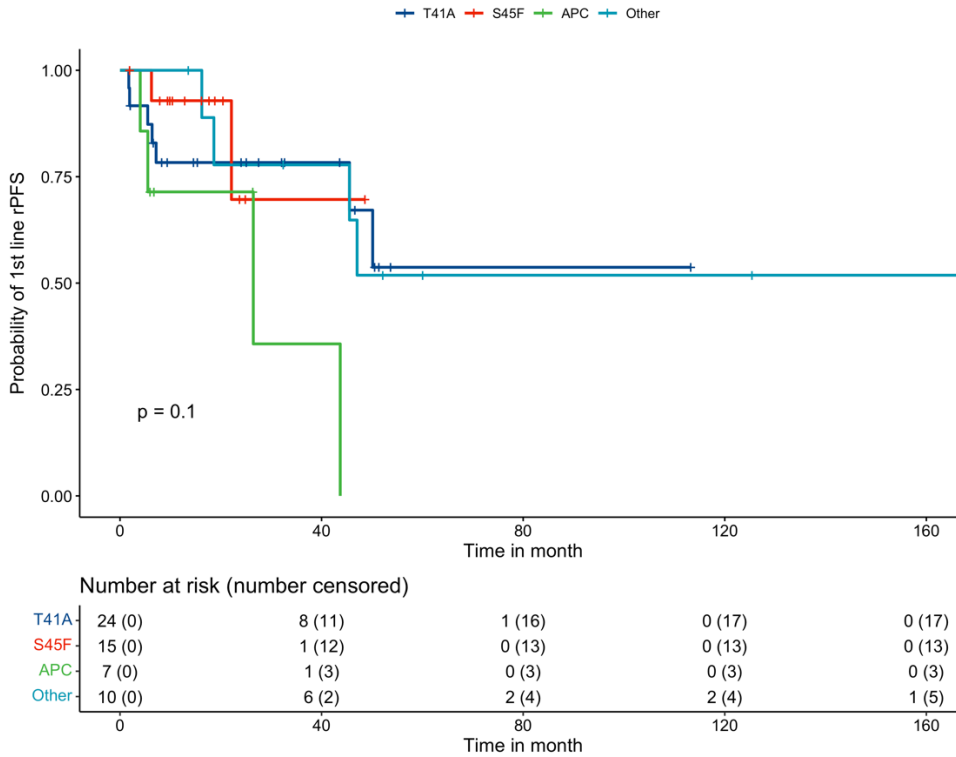
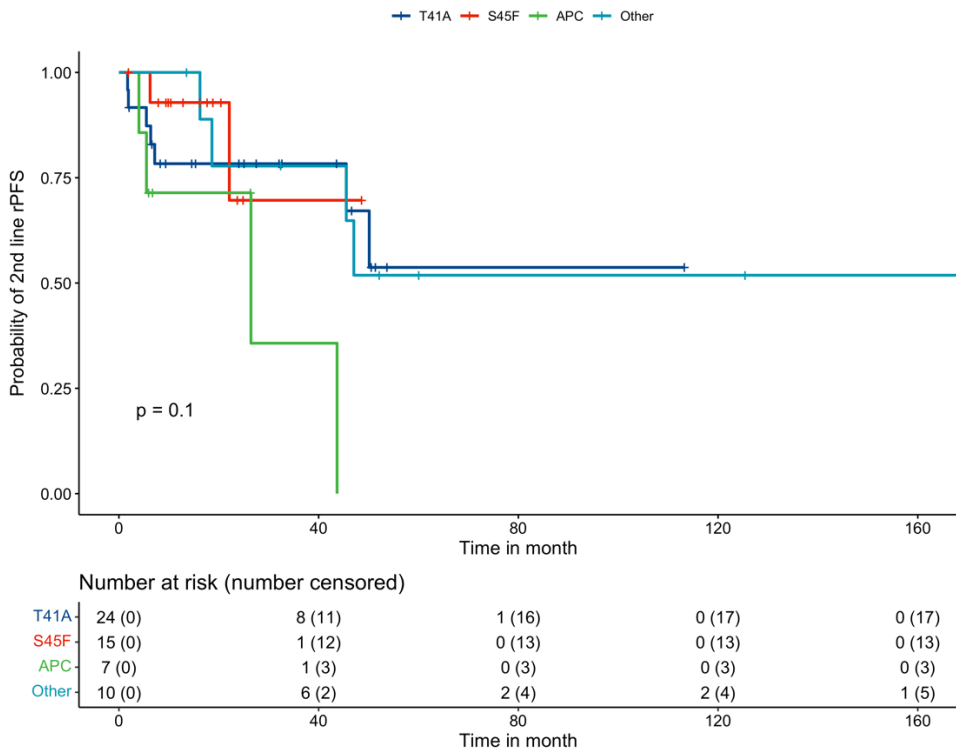


**A – First line RECIST PFS by mutation subtype**



Median PFS	(Months, 95%CI)
T41A	NR [46-NR]
S45F	NR [22-NR]
APC	26 [5.5-NR]
Negative/other	NR [46-NR]
1-year PFS	(Proportion, 95%CI)
T41A	0.78 [0.63-0.97]
S45F	0.93 [0.80-1.0]
APC	0.71 [0.45-1.0]
Negative/other	1.0 [1.0-1.0]

**B – Second line RECIST PFS by mutation subtype**



Median PFS	(Months, 95%CI)
T41A	NR [NR-NR]
S45F	NR [16-NR]
APC	52 [7.0 -NR]
Negative/other	NR [10-NR]
1-year PFS	(Proportion, 95%CI)
T41A	0.91 [0.79-1.0]
S45F	0.92 [0.79-1.0]
APC	0.60 [0.29-1.0]
Negative/other	0.71 [0.50-1.0]

**Figure S2. Kaplan-Meier survival curves for first and second line RECIST PFS by mutation subtype, individual patients.** Survival curves and median clinical PFS shown for (A) first line RECIST PFS, and (B) second line RECIST PFS.