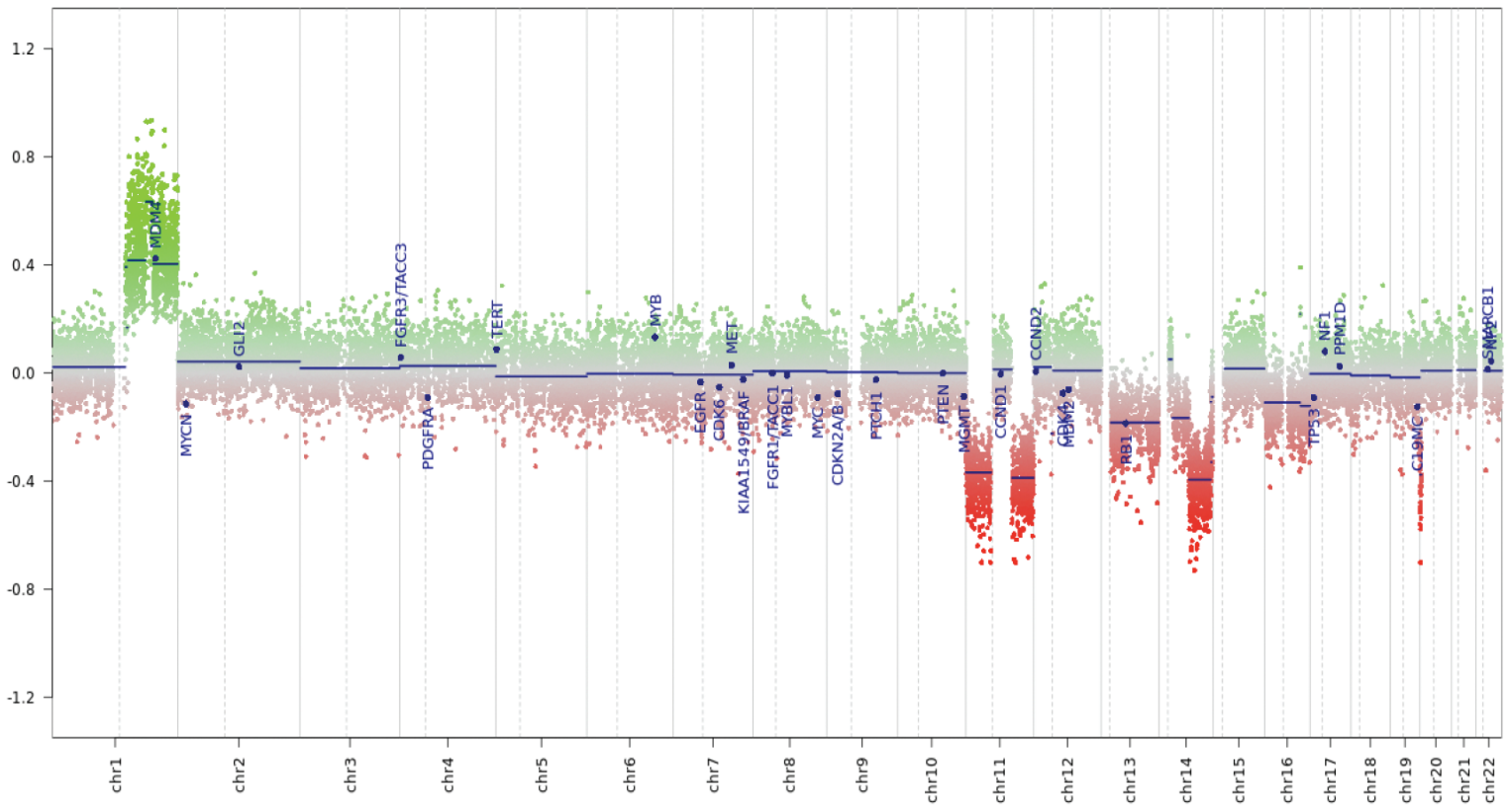


Supplemental figure 5.



**Brain tumor methylation classifier results (v11b4)**

| Methylation classes (MCs with score >= 0.3)             | Calibrated score | Interpretation |
|---|------------------|----------------|
| methylation class diffuse midline glioma H3 K27M mutant | 0.96             | match          |

Legend: Match (score >= 0.9) No match (score < 0.9): possibly still relevant for low tumor content and low DNA quality cases. Match to MC family member (score >= 0.5)