

Supplemental Table 1. Characteristics of people with systemic autoimmune rheumatic diseases with test-confirmed COVID-19, overall and stratified by resolved or prolonged symptom duration by the World Health Organization definition of 90 days or longer (n=429).

| | Overall n=429 | Symptoms resolved in less than 90 days n=387 | Prolonged symptom duration 90 days or longer (active or resolved) n=42 |
|--|--------------------------|--|--|
| Median COVID-19 symptom duration (or as of survey if ongoing), days (IQR) | 14 (7, 20) | 14 (7, 21) | 180 (120, 211.5) |
| COVID-19 symptom resolution | | | |
| Yes | 398 (92.8) | 387 (100) | 11 (26.2) |
| No | 24 (5.6) | 0 (0.0) | 24 (57.1) |
| Not sure | 7 (1.6) | 0 (0.0) | 7 (16.7) |
| Date of COVID-19 onset | | | |
| December 2019 to June 2020 | 104 (24.2) | 94 (24.3) | 10 (23.8) |
| July 2020 to December 2020 | 205 (47.8) | 179 (46.3) | 26 (61.9) |
| January 2021 to July 2021 | 120 (28.0) | 114 (29.5) | 6 (14.3) |
| Acute COVID-19 severity | | | |
| Not hospitalized and no difficulties performing daily activities | 154 (35.9) | 165 (42.6) | 9 (21.4) |
| Not hospitalized but had difficulties performing daily activities | 206 (48.0) | 179 (46.3) | 27 (64.3) |
| Hospitalized | 41 (9.6) | 35 (9) | 6 (14.3) |
| Hospitalized and required ICU care | 8 (1.9) | 8 (2.1) | 0 (0.0) |

| | | | |
|--|-------------|-------------|-----------|
| Age (years), mean (SD) | 47.8 (12.5) | 47.7 (12.6) | 51.8 (13) |
| Age categories, years | | | |
| 18-29 | 37 (8.6) | 35 (9.0) | 2 (4.8) |
| 30-49 | 191 (44.5) | 175 (45.2) | 16 (38.1) |
| 50-69 | 185 (43.1) | 164 (42.4) | 21 (50) |
| 70+ | 16 (3.7) | 13 (3.4) | 3 (7.1) |
| Female sex | 358 (83.4) | 323 (83.5) | 35 (83.3) |
| Race/ethnicity | | | |
| Asian (South, East Asian) | 11 (2.6) | 10 (2.6) | 1 (2.4) |
| Black | 13 (3.0) | 13 (3.4) | 0 (0.0) |
| Hispanic, Latinx or Latin American | 84 (19.6) | 81 (20.9) | 3 (7.1) |
| Middle Eastern or North African | 11 (2.6) | 11 (2.8) | 0 (0.0) |
| American Indian/ Alaska Native/Aboriginal/ Indigenous/ 1st Nations | 1 (0.2) | 1 (0.3) | 0 (0.0) |
| White | 257 (60.0) | 224 (57.9) | 33 (78.6) |
| Other | 48 (11.2) | 43 (11.1) | 5 (11.9) |
| WHO region | | | |
| Americas | 270 (62.9) | 244 (63) | 26 (61.9) |
| European | 135 (31.5) | 119 (30.7) | 16 (38.1) |
| African | 1 (0.2) | 1 (0.3) | 0 (0.0) |
| South-East Asian | 8 (1.9) | 8(2.1) | 0 (0.0) |
| Western Pacific | 1 (0.2) | 1 (0.3) | 0 (0.0) |
| Eastern Mediterranean | 10 (2.3) | 10 (2.6) | 0 (0.0) |
| Education | | | |
| High school (secondary level/GED) or less | 67 (15.6) | 62 (16.0) | 5 (11.9) |

| | | | |
|---|------------|------------|-----------|
| Some college | 101 (23.5) | 92 (23.8) | 9 (21.4) |
| Bachelor degree (graduated college) | 107 (24.9) | 95 (24.5) | 12 (28.6) |
| Graduate or professional degree | 140 (32.6) | 134 (34.6) | 16 (38.1) |
| SARD type | | | |
| Rheumatoid arthritis | 167 (38.9) | 158 (40.8) | 9 (21.4) |
| Systemic lupus erythematosus | 65 (15.2) | 62 (16) | 3 (7.1) |
| Systemic sclerosis | 18 (4.2) | 17 (4.4) | 1 (2.4) |
| Sjögren's syndrome | 50 (11.7) | 42 (10.9) | 8 (19) |
| Systemic vasculitis | 32 (7.5) | 27 (7) | 5 (11.9) |
| Spondyloarthritis, other than psoriatic arthritis | 47 (11.0) | 40 (10.3) | 7 (16.7) |
| Psoriatic arthritis | 31 (7.2) | 28 (7.2) | 3 (7.1) |
| Other connective tissue disease* | 15 (3.5) | 11 (2.8) | 4 (9.5) |
| Myositis | 51 (11.9) | 46 (11.9) | 5 (11.9) |
| Sarcoidosis | 2 (0.5) | 2 (0.5) | 0 (0) |
| Antiphospholipid syndrome | 11 (2.6) | 9 (2.3) | 2 (4.8) |
| Autoinflammatory disease | 4 (0.9) | 4 (1) | 0 (0.0) |
| Comorbidity count, mean (SD) | 4.4 (2.5) | 4.3 (2.5) | 5.3 (2.1) |
| Individual comorbidities | | | |
| Hypertension | 114 (26.6) | 95 (24.5) | 19 (45.2) |
| Lung disease‡ | 76 (17.7) | 69 (17.8) | 7 (16.7) |
| Obesity | 100 (23.3) | 88 (22.7) | 12 (28.6) |
| Diabetes | 28 (6.5) | 26 (6.7) | 2 (4.8) |
| Cardiovascular disease | 17 (4.0) | 12 (3.1) | 5 (11.9) |
| Osteoarthritis | 34 (7.9) | 28 (7.2) | 6 (14.3) |

| | | | |
|----------------|------------|------------|----------|
| Fibromyalgia | 51 (11.9) | 42 (10.9) | 9 (21.4) |
| No comorbidity | 143 (33.3) | 137 (35.4) | 6 (14.3) |

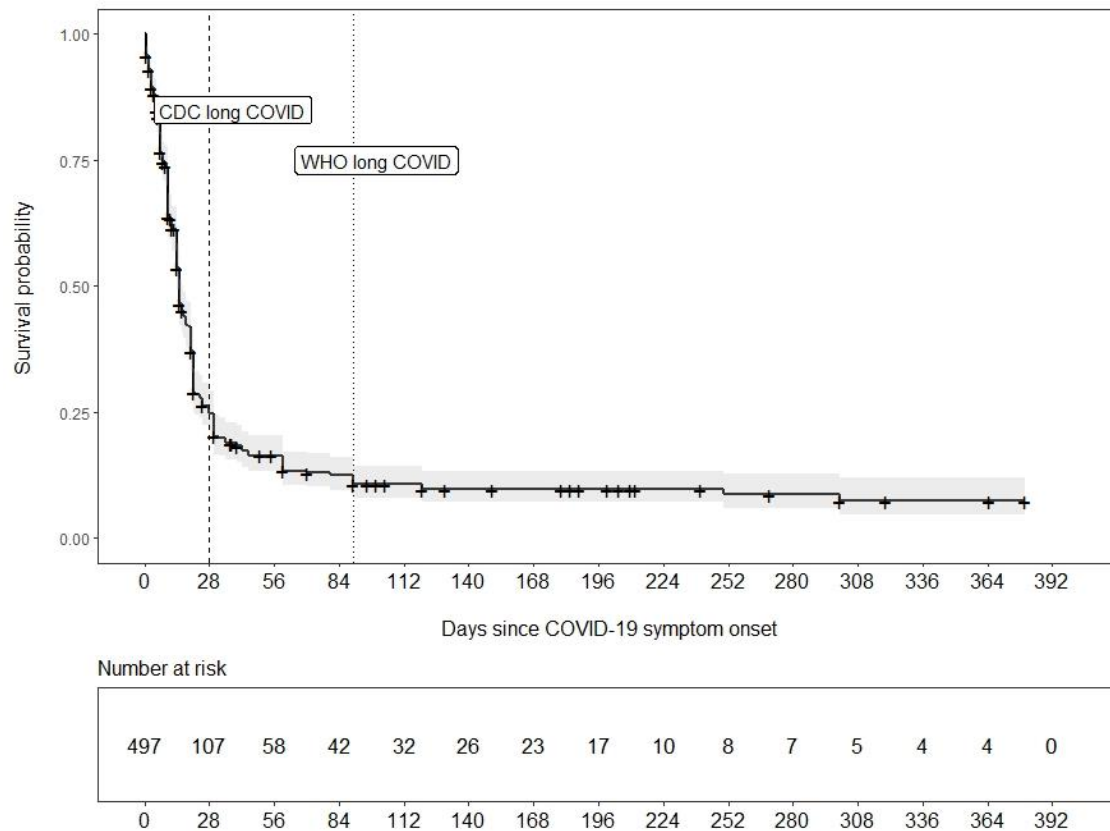
n (%) are presented unless indicated otherwise.

*Other connective tissue disease includes mixed connective tissue disease and undifferentiated connective tissue disease.

‡Lung disease includes asthma, emphysema, chronic bronchitis, chronic obstructive pulmonary disease, pulmonary hypertension, interstitial lung disease, idiopathic pulmonary fibrosis, and other lung diseases.

COVID-19, coronavirus disease 2019; GED, general equivalency degree; ICU, intensive care unit; IQR, interquartile range; SARD, systemic autoimmune rheumatic disease; SD, standard deviation; WHO, World Health Organization.

Supplemental Figure 1. Kaplan Meier survival curve for outcome of symptom resolution among systemic autoimmune rheumatic diseases with report of test-confirmed COVID-19 (n=497). The censoring event was ongoing symptom duration at time of survey (either unresolved or unsure if resolved). This secondary analysis also included 56 people with unresolved COVID-19 symptoms and <28 days duration at time of survey. The vertical lines at days 28 and 90 indicate prolonged symptom duration, as defined by the US Centers for Disease Control and Prevention and the World Health Organization, respectively. The symptom durations at the 25th, 50th, 75th, 95th, and 99th percentiles were 7, 14, 21, 150, and 301 days, respectively.



Supplemental Table 2. Characteristics of people with systemic autoimmune rheumatic diseases with test-confirmed COVID-19 and unresolved symptoms of <28 days duration at time of survey (n=56).

| | Symptom duration less than 28 days (unresolved) n=56 |
|---|--|
| Median ongoing COVID-19 symptom duration at time of survey, days (IQR) | 7 (4, 12) |
| COVID-19 symptom resolution | |
| Yes | 0 (0.0) |
| No | 46 (82.1) |
| Not sure | 10 (17.9) |
| Date of COVID-19 onset | |
| December 2019 to June 2020 | 7 (12.5) |
| July 2020 to December 2020 | 15 (26.8) |
| January 2021 to July 2021 | 34 (60.7) |
| Acute COVID-19 severity | |
| Not hospitalized and no difficulties performing daily activities | 25 (44.6) |
| Not hospitalized but had difficulties performing daily activities | 25 (44.6) |
| Hospitalized | 6 (10.7) |
| Hospitalized and required ICU care | 0 (0.0) |
| Age (years), mean (SD) | 48.4 (12.3) |
| Age categories, years | |
| 18-29 | 2 (3.6) |
| 30-49 | 35 (62.5) |
| 50-69 | 15 (26.8) |
| 70+ | 4 (7.1) |
| Female sex | 50 (89.3) |
| Race/ethnicity | |
| Asian (South, East Asian) | 3 (5.4) |
| Black | 1 (1.8) |

| | |
|---|-----------|
| Hispanic, Latinx or Latin American | 6 (10.7) |
| Middle Eastern or North African | 1 (1.8) |
| American Indian/ Alaska Native/ Aboriginal/ Indigenous/ 1st Nations | 1 (1.8) |
| White | 36 (64.3) |
| Other | 8 (14.3) |
| WHO region | |
| Americas | 29 (51.8) |
| European | 21 (37.5) |
| African | 2 (3.6) |
| South-East Asian | 2 (3.6) |
| Western Pacific | 0 (0.0) |
| Eastern Mediterranean | 1 (1.8) |
| Education | |
| High school (secondary level/GED) or less | 12 (21.4) |
| Some college | 15 (26.8) |
| Bachelor degree (graduated college) | 15 (26.8) |
| Graduate or professional degree | 14 (25.0) |
| SARD type | |
| Rheumatoid arthritis | 33 (58.9) |
| Systemic lupus erythematosus | 8 (14.3) |
| Systemic sclerosis | 1 (1.8) |
| Sjögren's syndrome | 7 (12.5) |
| Systemic vasculitis | 4 (7.1) |
| Spondyloarthritis, other than psoriatic arthritis | 6 (10.7) |
| Psoriatic arthritis | 2 (3.6) |
| Other connective tissue disease* | 3 (5.4) |
| Myositis | 4 (7.1) |
| Sarcoidosis | 0 (0.0) |
| Antiphospholipid syndrome | 0 (0.0) |
| Autoinflammatory disease | 0 (0.0) |

| | |
|-------------------------------------|-----------|
| Comorbidity count, mean (SD) | 4.4 (2.6) |
| Individual comorbidities | |
| Hypertension | 15 (26.8) |
| Lung disease‡ | 8 (14.3) |
| Obesity | 11 (19.6) |
| Diabetes | 5 (8.9) |
| Cardiovascular disease | 3 (5.4) |
| Osteoarthritis | 2 (3.6) |
| Fibromyalgia | 5 (8.9) |
| No comorbidity | 15 (26.8) |

n (%) are presented unless indicated otherwise.

*Other connective tissue disease includes mixed connective tissue disease and undifferentiated connective tissue disease.

‡Lung disease includes asthma, emphysema, chronic bronchitis, chronic obstructive pulmonary disease, pulmonary hypertension, interstitial lung disease, idiopathic pulmonary fibrosis, and other lung diseases.

COVID-19, coronavirus disease 2019, GED, general equivalency degree; ICU, intensive care unit; IQR, interquartile range; SARD, systemic autoimmune rheumatic disease; SD, standard deviation; WHO, World Health Organization.

Supplemental Table 3. Characteristics of people with systemic autoimmune rheumatic diseases with possible COVID-19, overall and stratified by resolved or prolonged symptom duration by US Centers for Disease Control and Prevention definition of 28 days or longer (n=381).

| | All Respondents n=381 | Symptom duration less than 28 days (resolved) n=229 | Symptom duration 28 days or longer n=152 |
|--|--------------------------|--|---|
| Median COVID-19 symptom duration (or as of survey if ongoing), days (IQR) | 20 (10, 42) | 10 (7, 15) | 49 (30, 150) |
| COVID-19 symptom resolution | | | |
| Yes | 337 (88.5) | 229 (100.0) | 108 (71.1) |
| No | 27 (7.1) | 0 (0.0) | 27 (17.8) |
| Not sure | 17 (4.5) | 0 (0.0) | 17 (11.2) |
| COVID-19 diagnosis | | | |
| Diagnosed myself based on symptoms | 249 (65.4) | 156 (68.1) | 93 (61.2) |
| My doctor diagnosed me based only on symptoms | 116 (30.4) | 61 (26.6) | 55 (36.2) |
| I was diagnosed based on positive test results | 0 (0.0) | 0 (0.0) | 0 (0.0) |
| Not sure | 12 (3.1) | 9 (3.9) | 3 (2.0) |
| Other | 4 (1.0) | 3 (1.3) | 1 (0.7) |
| Date of COVID-19 onset | | | |
| December 2019 to June 2020 | 282 (74.0) | 151 (65.9) | 131 (86.2) |
| July 2020 to December 2020 | 56 (14.7) | 46 (20.1) | 10 (6.6) |
| January 2021 to July 2021 | 41 (10.8) | 31 (13.5) | 10 (6.6) |
| Acute COVID-19 severity | | | |

| | | | |
|---|------------|------------|------------|
| Not hospitalized and no difficulties performing daily activities | 126 (33.1) | 92 (40.2) | 34 (22.4) |
| Not hospitalized but had difficulties performing daily activities | 248 (65.1) | 135 (59) | 113 (74.3) |
| Hospitalized | 7 (1.8) | 2 (0.9) | 5 (3.3) |
| Hospitalized and required ICU care | 0 (0.0) | 0 (0.0) | 0 (0.0) |
| Age categories, years | | | |
| 18-29 | 20 (5.2) | 15 (6.6) | 5 (3.3) |
| 30-49 | 158 (41.5) | 95 (41.5) | 63 (41.4) |
| 50-69 | 173 (45.4) | 104 (45.4) | 69 (45.4) |
| 70+ | 30 (7.9) | 15 (6.6) | 15 (9.9) |
| Female sex | 329 (86.4) | 192 (83.8) | 137 (90.1) |
| Race/ethnicity | | | |
| Asian (South, East Asian) | 7 (1.8) | 3 (1.3) | 4 (2.6) |
| Black | 6 (1.6) | 6 (2.6) | 0(0) |
| Hispanic, Latinx or Latin American | 33 (8.7) | 24 (10.5) | 9 (5.9) |
| Middle Eastern or North African | 8 (2.1) | 5 (2.2) | 3 (2.0) |
| American Indian/ Alaska Native/ Aboriginal/ Indigenous/ 1st Nations | 1 (0.3) | 0 (0.0) | 1 (0.7) |
| White | 280 (73.5) | 162 (70.7) | 118 (77.6) |
| Other | 45 (11.8) | 29 (12.7) | 16 (10.5) |
| WHO region | | | |
| Americas | 215 (56.4) | 130 (56.8) | 85 (55.9) |
| European | 152 (39.9) | 89 (38.9) | 63 (41.4) |
| African | 3 (0.8) | 2 (0.9) | 1 (0.7) |

| | | | |
|---|------------|-----------|-----------|
| South-East Asian | 4 (1.0) | 4 (1.7) | 0 (0.0) |
| Western Pacific | 2 (0.5) | 1 (0.4) | 1 (0.7) |
| Eastern Mediterranean | 3 (0.8) | 2 (0.9) | 1 (0.7) |
| Education | | | |
| High school (secondary level/GED) or less | 43 (11.3) | 29 (12.7) | 14 (9.2) |
| Some college | 92 (24.1) | 54 (23.6) | 38 (25.0) |
| Bachelor degree (graduated college) | 97 (25.5) | 56 (24.5) | 41 (27.0) |
| Graduate or professional degree | 148 (38.8) | 90 (39.3) | 58 (38.2) |
| SARD type | | | |
| Rheumatoid arthritis | 166 (43.6) | 95 (41.5) | 71 (46.7) |
| Systemic lupus erythematosus | 75 (19.7) | 44 (19.2) | 31 (20.4) |
| Systemic sclerosis | 10 (2.6) | 7 (3.1) | 3 (2.0) |
| Sjögren's syndrome | 62 (16.3) | 39 (17.0) | 23 (15.1) |
| Systemic vasculitis | 21 (5.5) | 12 (5.2) | 9 (5.9) |
| Spondyloarthritis, other than psoriatic arthritis | 33 (8.7) | 18 (7.9) | 15 (9.9) |
| Psoriatic arthritis | 26 (6.8) | 18 (7.9) | 8 (5.3) |
| Other connective tissue disease* | 46 (12.1) | 27 (11.8) | 19 (12.5) |
| Myositis | 43 (11.3) | 24 (10.5) | 19 (12.5) |
| Sarcoidosis | 4 (1.0) | 3 (1.3) | 1 (0.7) |
| Antiphospholipid syndrome | 16 (4.2) | 8 (3.5) | 8 (5.3) |
| Autoinflammatory disease | 7 (1.8) | 5 (2.2) | 2 (1.3) |
| Comorbidity count, median (IQR) | 1 (0, 2) | 1 (0, 2) | 1 (0, 2) |
| Individual comorbidities | | | |

| | | | |
|------------------------|------------|-----------|-----------|
| Hypertension | 106 (27.8) | 65 (28.4) | 41 (27.0) |
| Lung disease‡ | 114 (29.9) | 56 (24.5) | 58 (38.2) |
| Obesity | 90 (23.6) | 52 (22.7) | 38 (25.0) |
| Diabetes | 21 (5.5) | 15 (6.6) | 6 (3.9) |
| Cardiovascular disease | 27 (7.1) | 15 (6.6) | 12 (7.9) |
| Osteoarthritis | 61 (16.0) | 30 (13.1) | 31 (20.4) |
| Fibromyalgia | 86 (22.6) | 46 (20.1) | 40 (26.3) |
| No comorbidity | 105 (27.6) | 65 (28.4) | 40 (26.3) |

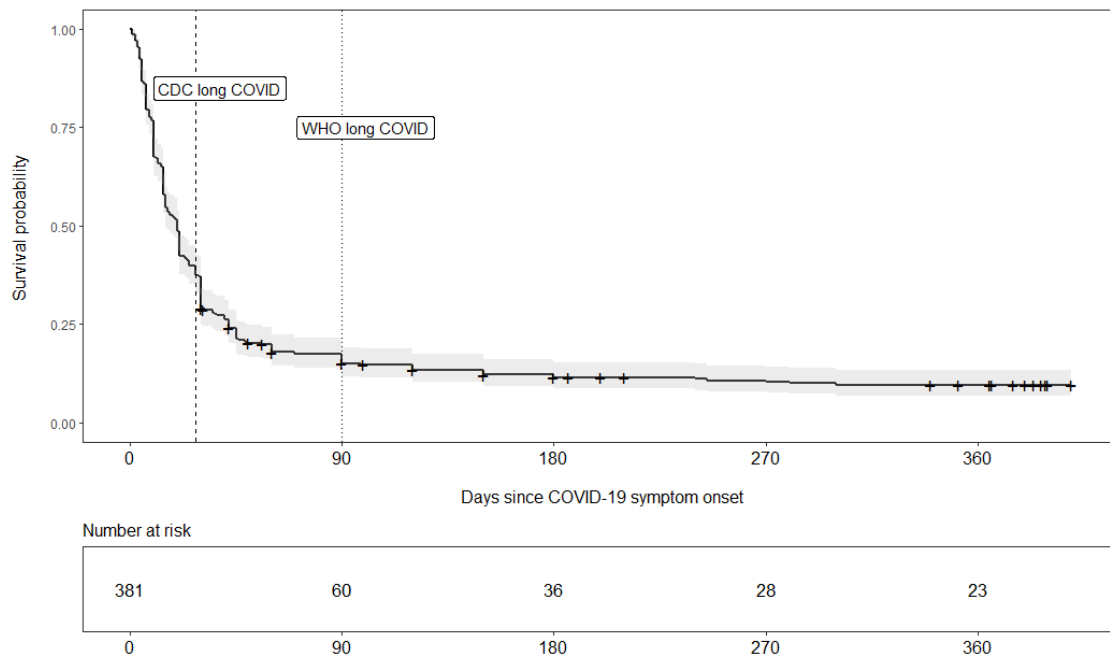
n (%) are presented unless indicated otherwise.

*Other connective tissue disease includes mixed connective tissue disease and undifferentiated connective tissue disease.

‡Lung disease includes asthma, emphysema, chronic bronchitis, chronic obstructive pulmonary disease, pulmonary hypertension, interstitial lung disease, idiopathic pulmonary fibrosis, and other lung diseases.

COVID-19, coronavirus disease 2019; GED, general equivalency degree; ICU, intensive care unit; IQR, interquartile range; SARD, systemic autoimmune rheumatic disease; SD, standard deviation; WHO, World Health Organization.

Supplemental Figure 2. Kaplan Meier survival curve for outcome of symptom resolution among systemic autoimmune rheumatic diseases with report of possible COVID-19 (n=381). The censoring event was ongoing symptom duration at time of survey (either unresolved or unsure if resolved). The vertical lines at days 28 and 90 indicate prolonged symptom duration, as defined by the US Centers for Disease Control and Prevention and the World Health Organization, respectively. The symptom durations at the 25th, 50th, 75th, 95th, and 99th percentiles were 10, 20, 42, 365, and 400 days, respectively.



Supplemental Table 3. Characteristics of people with systemic autoimmune rheumatic diseases with test-confirmed and possible COVID-19, overall and stratified by resolved or prolonged symptom duration by US Centers for Disease Control and Prevention definition of 28 days or longer (n=822).

| | All Respondents n=822 | Symptom duration less than 28 days (resolved) n=563 | Symptom duration 28 days or longer n=259 |
|--|--------------------------|--|---|
| Median COVID-19 symptom duration (or as of survey if ongoing), days (IQR) | 15 (8, 30) | 10 (7, 16) | 56 (30, 150) |
| COVID-19 symptom resolution | | | |
| Yes | 735 (89.4) | 563 (100.0) | 172 (66.4) |
| No | 59 (7.2) | 0 (0.0) | 59 (22.8) |
| Not sure | 28 (3.4) | 0 (0.0) | 28 (10.8) |
| COVID-19 diagnosis | | | |
| Diagnosed myself based on symptoms | 249 (30.2) | 156 (27.7) | 93 (35.9) |
| My doctor diagnosed me based only on symptoms | 116 (13.2) | 334 (59.3) | 107 (41.3) |
| I was diagnosed based on positive test results | 441 (53.6) | 61 (10.8) | 55 (21.2) |
| Not sure | 12 (1.5) | 9 (1.6) | 3 (1.2) |
| Other | 4 (0.5) | 3 (0.5) | 1 (0.4) |
| Date of COVID-19 onset | | | |
| December 2019 to June 2020 | 390 (47.4) | 230 (40.9) | 160 (61.8) |
| July 2020 to December 2020 | 264 (32.1) | 194 (34.5) | 70 (27) |
| January 2021 to July 2021 | 166 (20.2) | 138 (24.5) | 28 (10.8) |
| Acute COVID-19 severity | | | |

| | | | |
|---|------------|------------|------------|
| Not hospitalized and no difficulties performing daily activities | 301 (36.6) | 249 (44.2) | 52 (20.1) |
| Not hospitalized but had difficulties performing daily activities | 459 (55.8) | 281 (49.9) | 178 (68.7) |
| Hospitalized | 53 (6.4) | 28 (5.0) | 25 (9.7) |
| Hospitalized and required ICU care | 9 (1.1) | 5 (0.9) | 4 (1.5) |
| Age categories, years | | | |
| 18-29 | 57 (6.9) | 45 (8.0) | 12 (4.6) |
| 30-49 | 355 (43.2) | 254 (45.1) | 101 (39.0) |
| 50-69 | 364 (44.3) | 238 (42.3) | 126 (48.6) |
| 70+ | 46 (5.6) | 26 (4.6) | 20 (7.7) |
| Female sex | 698 (84.9) | 468 (83.1) | 230 (88.8) |
| Race/ethnicity | | | |
| Asian (South, East Asian) | 18 (2.2) | 10 (1.8) | 8 (3.1) |
| Black | 19 (2.3) | 14 (2.5) | 5 (1.9) |
| Hispanic, Latinx or Latin American | 117 (14.2) | 96 (17.1) | 21 (8.1) |
| Middle Eastern or North African | 19 (2.3) | 15 (2.7) | 4 (1.5) |
| American Indian/ Alaska Native/ Aboriginal/ Indigenous/ 1st Nations | 2 (0.2) | 1 (0.2) | 1 (0.4) |
| White | 548 (66.7) | 356 (63.2) | 192 (74.1) |
| Other | 94 (11.4) | 67 (11.9) | 27 (10.4) |
| WHO region | | | |
| Americas | 492 (59.9) | 341 (60.6) | 151 (58.3) |
| European | 292 (35.5) | 191 (33.9) | 101 (39.0) |
| African | 4 (0.5) | 3 (0.5) | 1 (0.4) |

| | | | |
|---|------------|------------|------------|
| South-East Asian | 12 (1.5) | 11 (2.0) | 1 (0.4) |
| Western Pacific | 3 (0.4) | 2 (0.4) | 1 (0.4) |
| Eastern Mediterranean | 13 (1.6) | 10 (1.8) | 3 (1.2) |
| Education | | | |
| High school (secondary level/GED) or less | 113 (13.7) | 84 (14.9) | 29 (11.2) |
| Some college | 195 (23.7) | 136 (24.2) | 59 (22.8) |
| Bachelor degree (graduated college) | 207 (25.2) | 138 (24.5) | 69 (26.6) |
| Graduate or professional degree | 302 (36.7) | 201 (35.7) | 101 (39.0) |
| SARD type | | | |
| Rheumatoid arthritis | 340 (41.4) | 234 (41.6) | 106 (40.9) |
| Systemic lupus erythematosus | 144 (17.5) | 99 (17.6) | 45 (17.4) |
| Systemic sclerosis | 28 (3.4) | 23 (4.1) | 5 (1.9) |
| Sjögren's syndrome | 113 (13.7) | 75 (13.3) | 38 (14.7) |
| Systemic vasculitis | 53 (6.4) | 36 (6.4) | 17 (6.6) |
| Spondyloarthritis, other than psoriatic arthritis | 83 (10.1) | 51 (9.1) | 32 (12.4) |
| Psoriatic arthritis | 57 (6.9) | 44 (7.8) | 13 (5.0) |
| Other connective tissue disease* | 61 (7.4) | 38 (6.7) | 23 (8.9) |
| Myositis | 94 (11.4) | 62 (11) | 32 (12.4) |
| Sarcoidosis | 6 (0.7) | 5 (0.9) | 1 (0.4) |
| Antiphospholipid syndrome | 27 (3.3) | 15 (2.7) | 12 (4.6) |
| Autoinflammatory disease | 11 (1.3) | 8 (1.4) | 3 (1.2) |
| Comorbidity count, median (IQR) | 1 (0, 2) | 1 (0, 2) | 1 (0, 2) |
| Individual comorbidities | | | |

| | | | |
|------------------------|------------|------------|-----------|
| Hypertension | 223 (27.1) | 144 (25.6) | 79 (30.5) |
| Lung disease‡ | 194 (23.6) | 111 (19.7) | 83 (32) |
| Obesity | 192 (23.4) | 123 (21.8) | 69 (26.6) |
| Diabetes | 49 (6) | 35 (6.2) | 14 (5.4) |
| Cardiovascular disease | 44 (5.4) | 25 (4.4) | 19 (7.3) |
| Osteoarthritis | 96 (11.7) | 51 (9.1) | 45 (17.4) |
| Fibromyalgia | 137 (16.7) | 81 (14.4) | 56 (21.6) |
| No comorbidity | 250 (30.4) | 185 (32.9) | 65 (25.1) |

n (%) are presented unless indicated otherwise.

*Other connective tissue disease includes mixed connective tissue disease and undifferentiated connective tissue disease.

‡Lung disease includes asthma, emphysema, chronic bronchitis, chronic obstructive pulmonary disease, pulmonary hypertension, interstitial lung disease, idiopathic pulmonary fibrosis, and other lung diseases.

COVID-19, coronavirus disease 2019; GED, general equivalency degree; ICU, intensive care unit; IQR, interquartile range; SARD, systemic autoimmune rheumatic disease; SD, standard deviation; WHO, World Health Organization.

Supplemental Figure 3. Kaplan Meier survival curve for outcome of symptom resolution among systemic autoimmune rheumatic diseases with report of test-confirmed and possible COVID-19 (n=822). The censoring event was ongoing symptom duration at time of survey (either unresolved or unsure if resolved). The vertical lines at days 28 and 90 indicate prolonged symptom duration, as defined by the US Centers for Disease Control and Prevention and the World Health Organization, respectively. The symptom durations at the 25th, 50th, 75th, 95th, and 99th percentiles were 8, 15, 30, 210, and 398 days, respectively.

