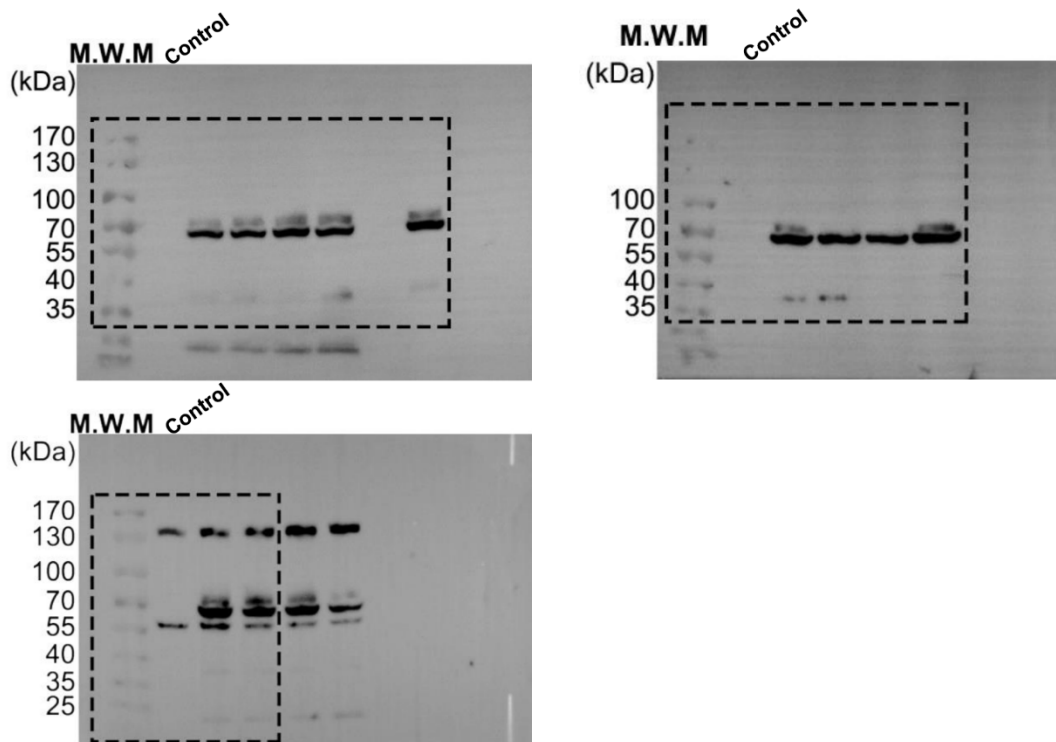


Supplementary information

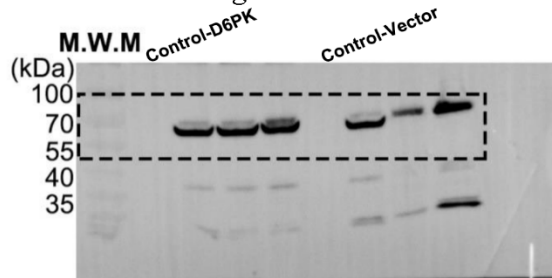
**Structural insights into auxin recognition
and efflux by *Arabidopsis* PIN1**

In the format provided by the
authors and unedited

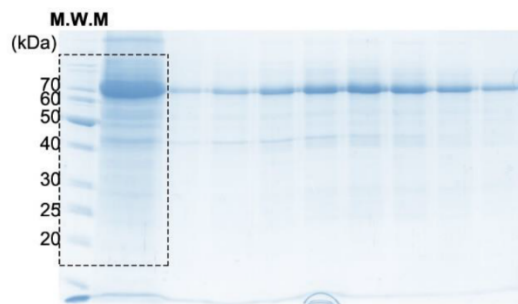
Extended Data Fig. 2a



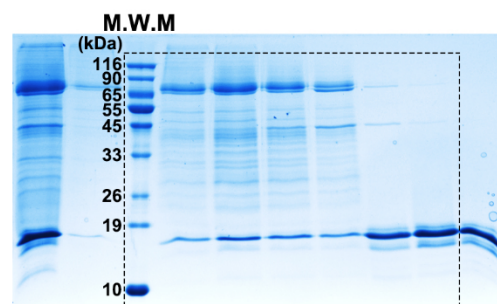
Extended Data Fig. 2d



Extended Data Fig. 2g



Extended Data Fig. 3a



Supplementary Figure 1. Uncropped western blot or Coomassie-blue staining SDS-PAGE gel scans. The cropped areas for use in the figures are indicated by a black dashed box.