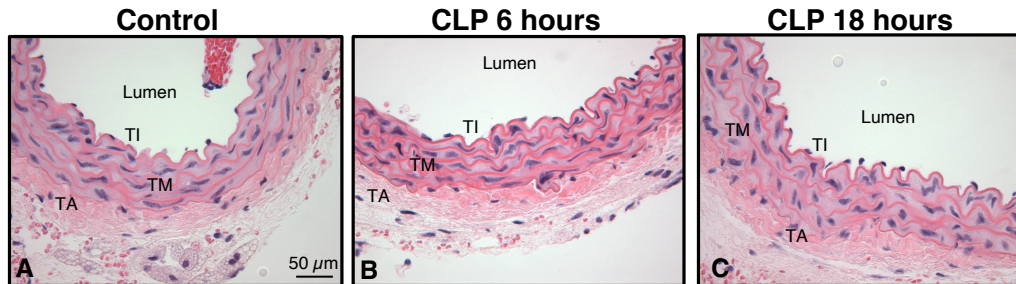
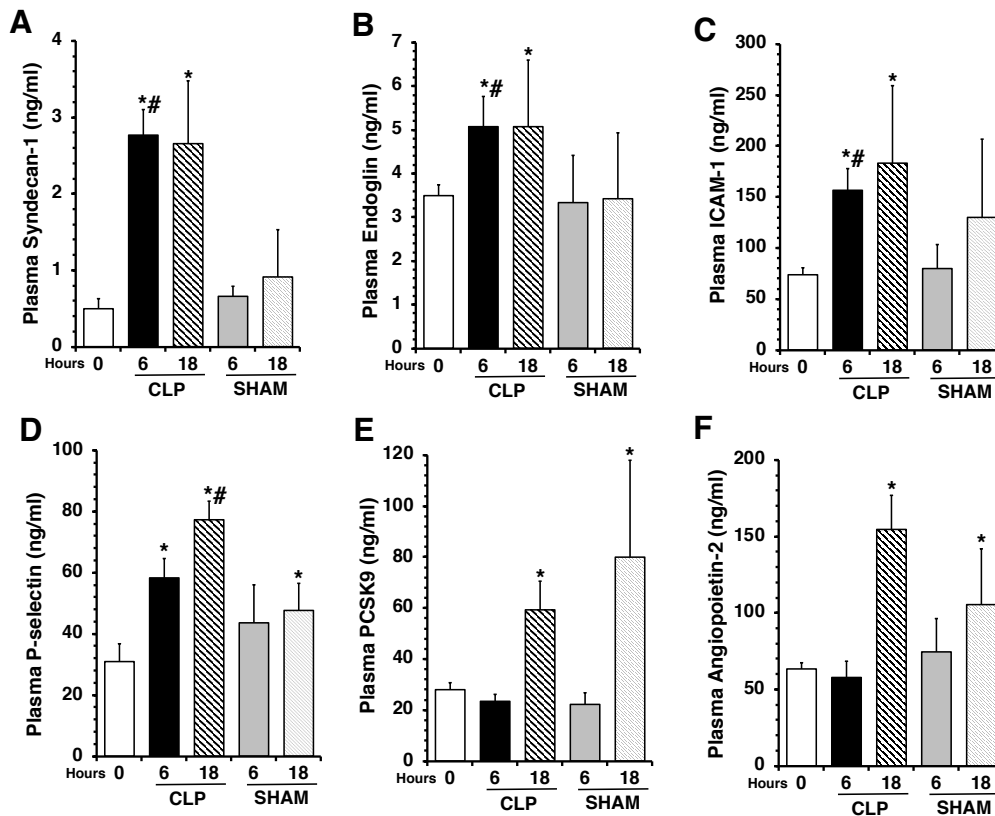


Supplementary Material

Supplementary Figures



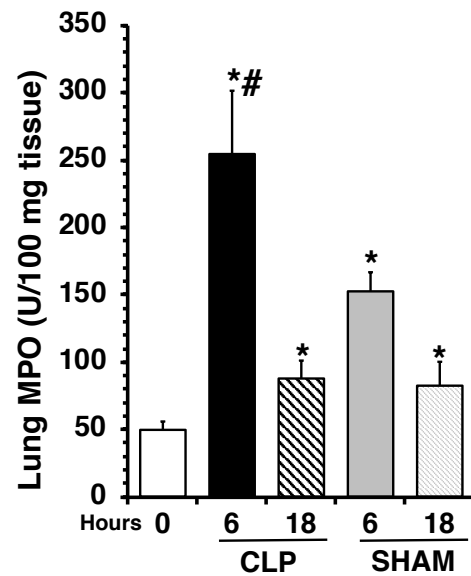
Supplementary Figure S1. Representative histology photomicrographs of thoracic aorta sections of a control mouse (A) or mice subjected to polymicrobial sepsis at 6 h (B) and 18 h (C) after cecal ligation and puncture (CLP) with normal morphology of tunica intima (TI), tunica media (TM), and tunica adventitia (TA). Magnification x400. A similar pattern was seen in n=4-8 different tissue sections in each experimental group.



Supplementary Figure S2. Plasma levels of Syndecan-1 (A), Endoglin (B), ICAM-1 (C), P-selectin (D), PCSK9 (E), and Angiopoietin-2 (F) at 0 h, 6 h and 18 h after cecal ligation and puncture (CLP)

or sham surgery (SHAM). Data represents the mean \pm SEM of 10-13 mice for group (n=10 control group at 0 h, n=13 at 6 h CLP, n=11 at 18 h CLP, n=9 at 6 h SHAM, n=8 at 18 h SHAM).

*Represents $P < 0.05$ versus control mice at time 0; #represents $P < 0.05$ versus sham mice.



Supplementary Figure S3. Activity of myeloperoxidase (MPO) in lung (A), liver (B), kidney (C) at 6 h after cecal ligation and puncture (CLP) or sham surgery (SHAM). Data represents the mean \pm SEM of 8-17 mice for group (n=17 control group at 0 h, n=13 at 6 h CLP, n=11 at 18 h CLP, n=9 at 6 h SHAM, n=8 at 18 h SHAM). *Represents $P < 0.05$ versus control mice at time 0; #represents $P < 0.05$ versus sham mice.