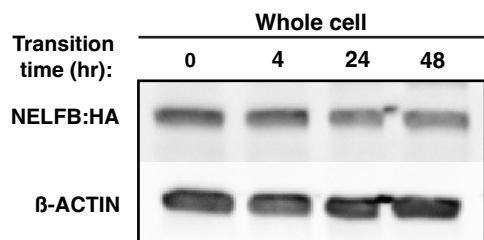
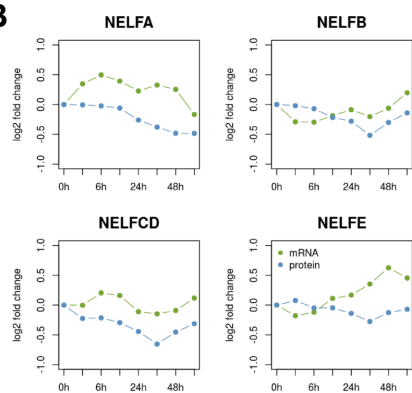
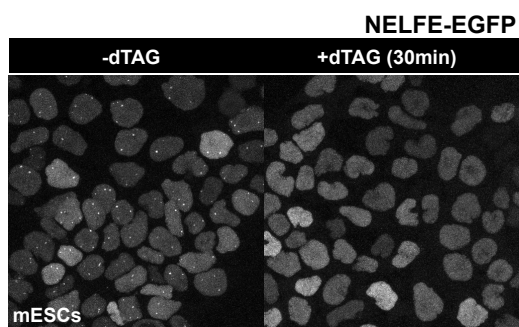
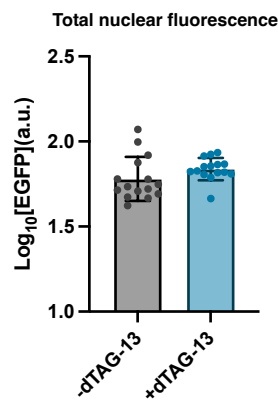
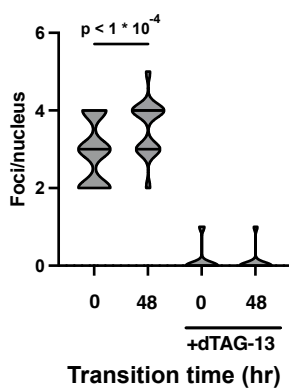
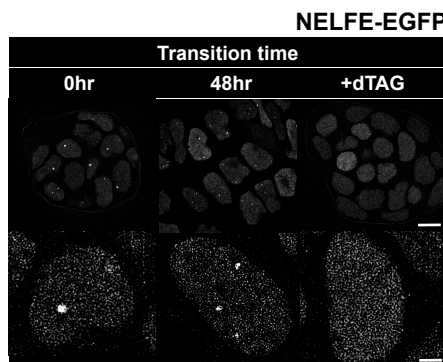
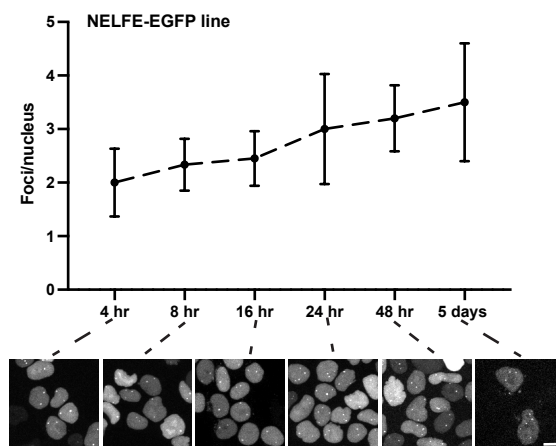


A

B

C

D

E

F

G

H


Transition time (hr): 4 8 16 24 48 5 days

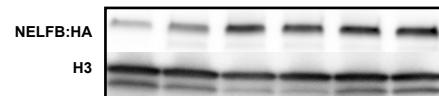


Fig S6. NELF is recruited to chromatin during pluripotency transitions, related to

Figure 6

- (A) Western blot of whole cell lysates during pluripotency transitions, related to Figure 6A.
- (B) Expression of NELF complex genes during pluripotency (0-72 hr).
- (C) Nelfe-EGFP transgene construct design.
- (D) Live images of NELFE-EGFP with and without 30 mins of dTAG-13. Scale bar 10 μ m.
- (E) Whole nucleus EGFP fluorescence quantification of images in Figure S6C.
- (F) Violin plot of NELF bodies per nuclei using super-resolution microscopy.
- (G) Live super-resolution images of NELFE-EGFP. Scale bar: top 10 μ m; bottom 2 μ m.
- (H) Top: plot showing number of Nelf bodies using NELFE-EGFP during pluripotency transitions and 5 days after initiation. Mean and standard deviation are shown. Middle: representative images of the time points in the plot above. Scale bar 10 μ m. Bottom: Chromatin fraction western blot of NELFB at the same time points shown above.