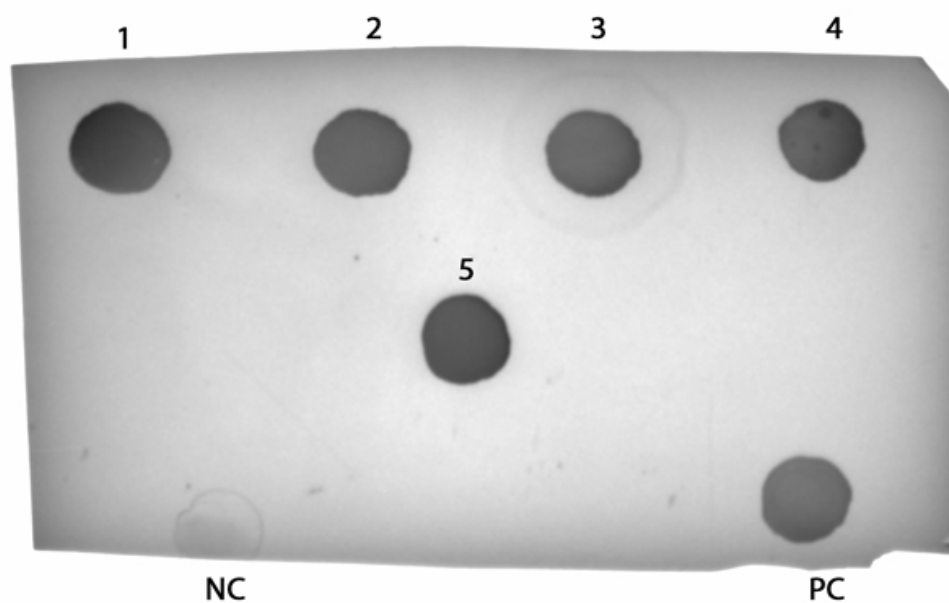


SDS-PAGE loading order: Marker, β Barrel, Ferritin, β Barrel_Ferritin, mI3, β Barrel_mI3, Encapsulin, β Barrel_Encapsulin, AP205, β Barrel_AP205, Qbeta, β Barrel_Qbeta, HBcAg, β Barrel_HBcAg. Acquired using ImageLab software from BioRad. From this image, figure 2 was generated.



Dot Blot loading order of different (1) β barrel-ferritin, (2) β barrel-mI3, (3) β barrel-Encapsulin, (4) β barrel-AP205, (5) β barrel-HBcAg, (NC) Negative control represented by naked ferritin, (PC) Positive control represented by monomeric β barrel. Acquired using ImageLab from BioRad. From this image, figure 4 was generated