

**Supplementary table 1: Baseline characteristics of the patients with PPs and EMPs**

	<b>PPs N= 230</b>	<b>EMPs N=26</b>	<b>P value</b>
<b>Gender (male), n (%)</b>	133 (57.8%)	15 (57.6%)	
<b>Age (years), median( range)</b>			
<b>ISS , n(%)*</b>			
• I	84 (50%)	8 (47%)	NS
• II	47 (27.9%)	3 (17.6%)	NS
• III	37 (22%)	6 (35% <sup>9</sup> )	NS
<b>Heavy chain type, n( %)</b>			
• IgG	110 (47.8%)	14 (53.8%)	NS
• IgA	58 (25.2%)	7 (26.9%)	NS
• Ligh chain	47 (20.4%)	3 (11.5%)	NS
• IgD	4 (1.7%)	-	NS
• IgM	2 (0.8%)	-	
• Non- secretory	7 (3%)	1 (3.8%)	NS
• Biclonal	2 (0.8%)	-	
• Unknown		1 (3.8%)	
<b>Ligh chain type, n (%)</b>			
• Kappa	129 (56%)	11 (42.3% <sup>9</sup> )	NS
• Lambda	91 (39.5%)	12 (46.1%)	NS
• Non-secretory	7 (3%)	1 (3.8%)	NS
• Biclonal	2 (0.08%)	-	
• Unknown	1 (0.04%)	2 (7.6%)	
<b>Serum M-protein s (g/L)(mean±SD)</b>	24.05±21.3	29.07±18.2	NS
<b>Bone marrow plasma cells (%) (mean±SD)</b>	31±28	31±35	NS

\*Available in 185 patients

**Supplementary table S2: Initial therapy in the overall series according to the presence or absence of Ps**

	<b>Patients without Ps N=1048</b>	<b>Patients with Ps N=256</b>	<b>P value</b>
<b>QT</b>	728 (69.4%)	145 (56.6%)	<0.001
<b>PI</b>	134 (12.7%)	46 (17.9%)	0.03
<b>IMiD</b>	55 (5.2%)	15 (5.8%)	NS
<b>PI+IMiD</b>	106 (10.1%)	44 (17.1%)	0.001
<b>MAB</b>	13 (1.2%)	3 (1.1%)	NS

**Supplementary table 3: detailed therapy at initial diagnosis in the overall series according to the presence or absence of Ps**

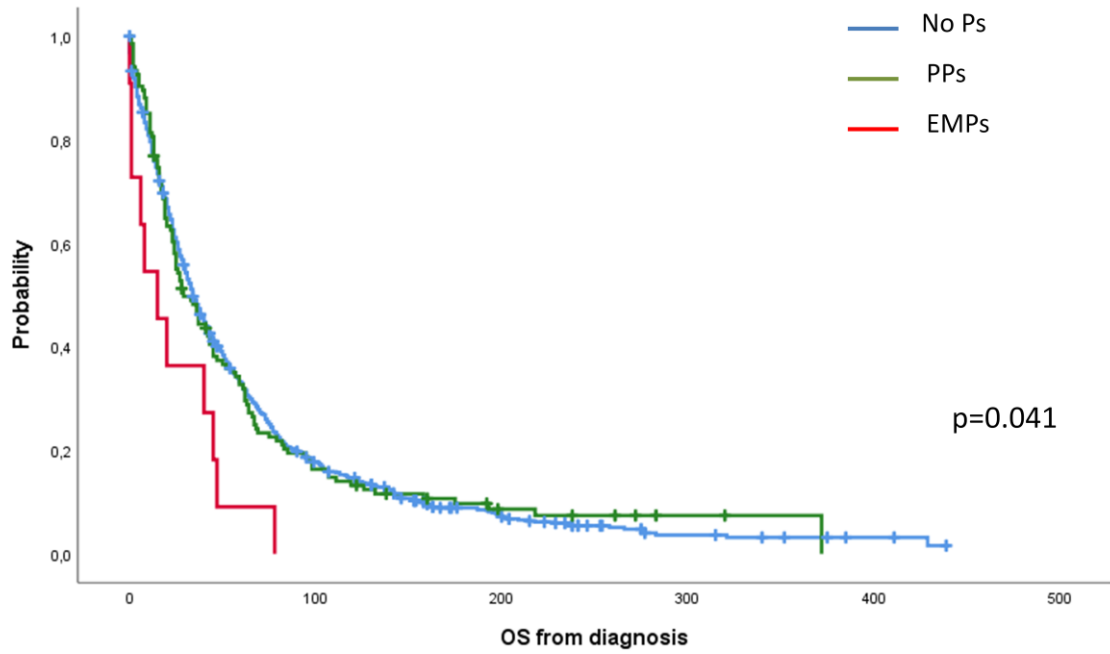
	<b>Patients without Ps N=1048</b>	<b>Patients with Ps N=256</b>	<b>P value</b>
<b>QT</b>	728 (69.4%)	145 (56.6%)	<0.001
• Melphalan/prednisone	285 (27.1%)	45 (17.5%)	
• Cyclophosphamide/dexa or prednisone	120 (11.4%)	19 (7.4%)	
• VCMP/VBAP	106 (10.1%)	22 (8.5%)	
• VBMCP/VBAD	103 (9.8%)	28 (10.9%)	
• VAD	26 (2.4%)	7 (2.7%)	
• Others	88 (8.3%)	24 (9.3%)	
<b>PI</b>	134 (12.7%)	46 (17.9%)	0.03
• Bortezomib/dexamethasone	67 (6.3%)	19 (7.4%)	
• MPV	36 (3.4%)	19 (7.4%)	
• Others	31 (2.9%)	8 (3.1%)	
<b>IMiD</b>	55 (5.2%)	15 (5.8%)	NS
• Thal/dex	20 (1.9%)	10 (3.9%)	
• Len/dex	16 (1.5%)	5 (1.9%)	
• LEn/dex/clarithromycin	12 (1.1%)	-	
• Others	5 (0.4%)		
<b>PI+IMiD</b>	106 (10.1%)	44 (17.1%)	0.001
• VTD	71 (6.7%)	30 (11.7%)	
• VRD	18 (1.7%)	8 (3.1%)	
• MPV/Rd	10 (0.9%)	3 (1.1%)	
• Others	7 (0.6%)	3 (1.1%)	
<b>MAb</b>	13 (1.2%)	3 (1.1%)	NS
• MPV-daratumumab	7 (0.6%)	2 (0.7%)	
• Lena/dexa/elotuzumab	5 (0.4%)	1 (0.3%)	

**Supplementary table 4: detailed therapy at first relapse in the overall series according to the presence or absence of Ps**

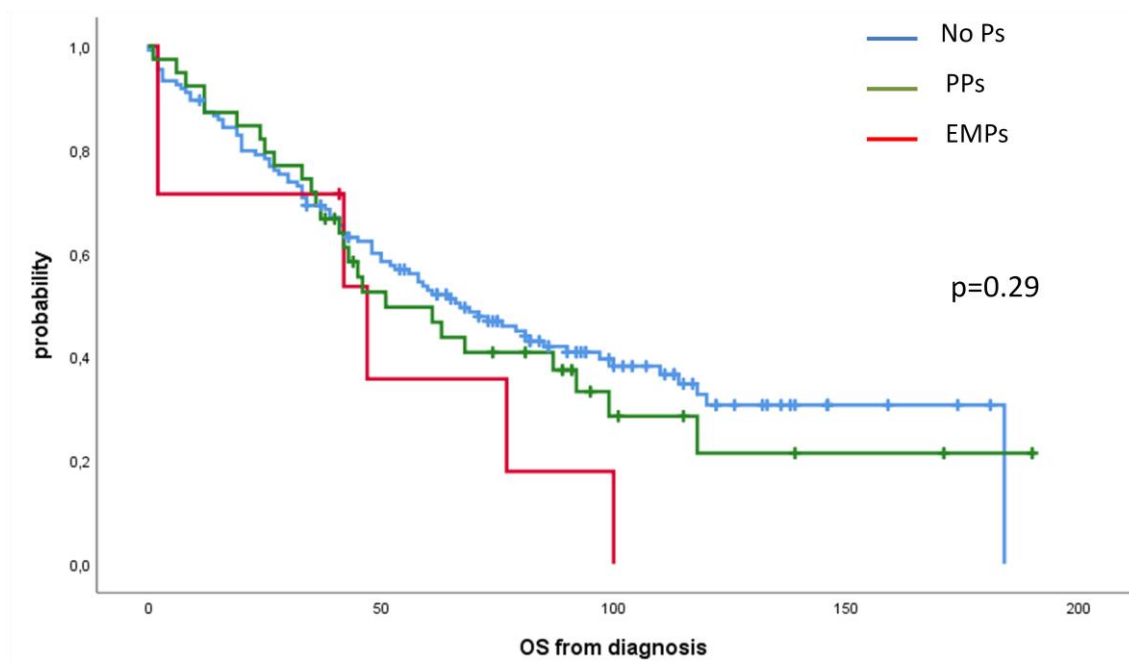
	<b>Patients without Ps N=775</b>	<b>Patients with Ps N=192</b>	<b>P value</b>
<b>Received salvage therapy</b>	N= 576	N= 178	
<b>QT</b>	298	88	NS
• <b>Melphalan/prednisone</b>	66	9	
• <b>Cyclophosphamide/dexa or prednisone</b>	87	22	
• <b>VCMP/VBAP</b>	21		
• <b>VBAD or VBAP</b>	54	20	
• <b>Others</b>	70	30	
<b>PI</b>	118	40	NS
• <b>Bortezomib/dexamethasone</b>	45	15	
• <b>bortezomib</b>	23	7	
• <b>Carfilzomib/dexamethasone</b>	12	2	
• <b>MPV</b>	10	2	
• <b>Others</b>	28	14	
<b>IMiD</b>	94	16	0.01
• <b>Len/dex</b>	66	9	
• <b>Thalidomide</b>	23	5	
• <b>Others</b>	5	2	
<b>PI+IMiD</b>	38	17	NS
• <b>KRd</b>	29	14	
• <b>Others</b>	9	3	
<b>MAB</b>	25	-	
• <b>DRd</b>	10		
• <b>DVd</b>	7		
• <b>DKd</b>	6		
• <b>Others</b>	2		

**Supplementary figure 1:** overall survival from diagnosis according to the initial therapy a) conventional chemotherapy, b) PI-based, c) IMiD-based, d) PI+IMiD-based

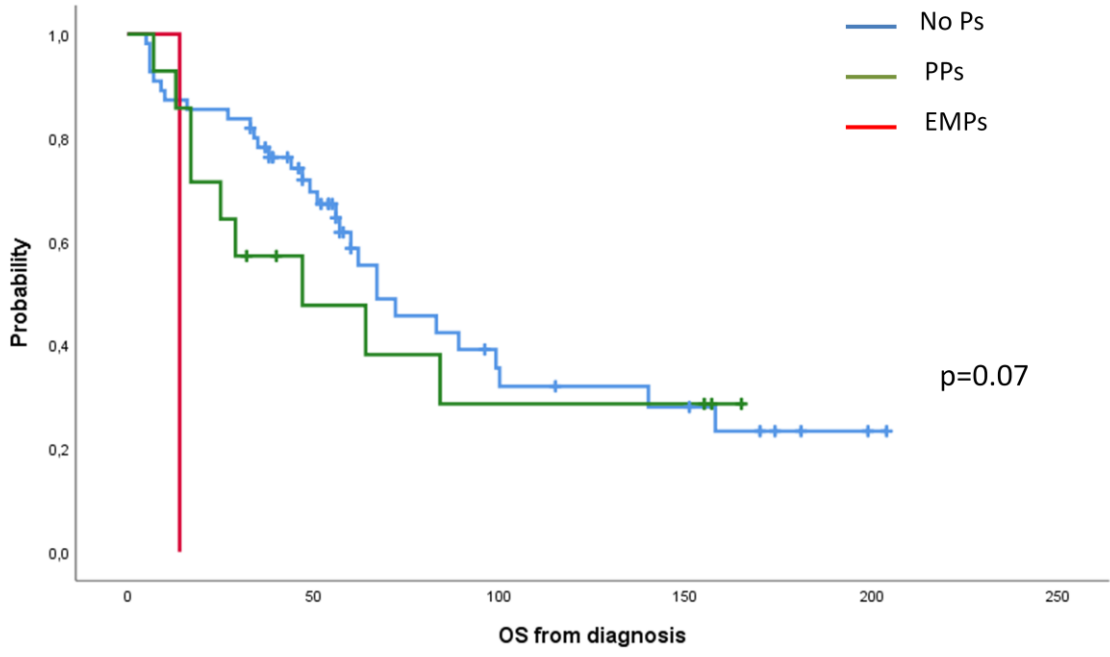
A



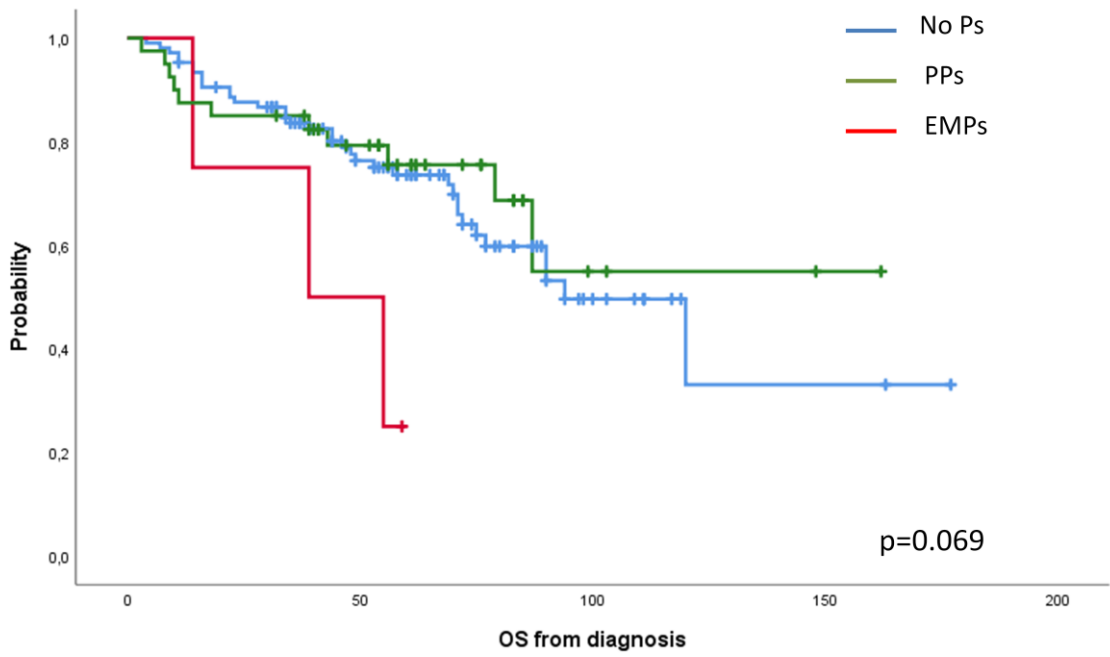
B



C

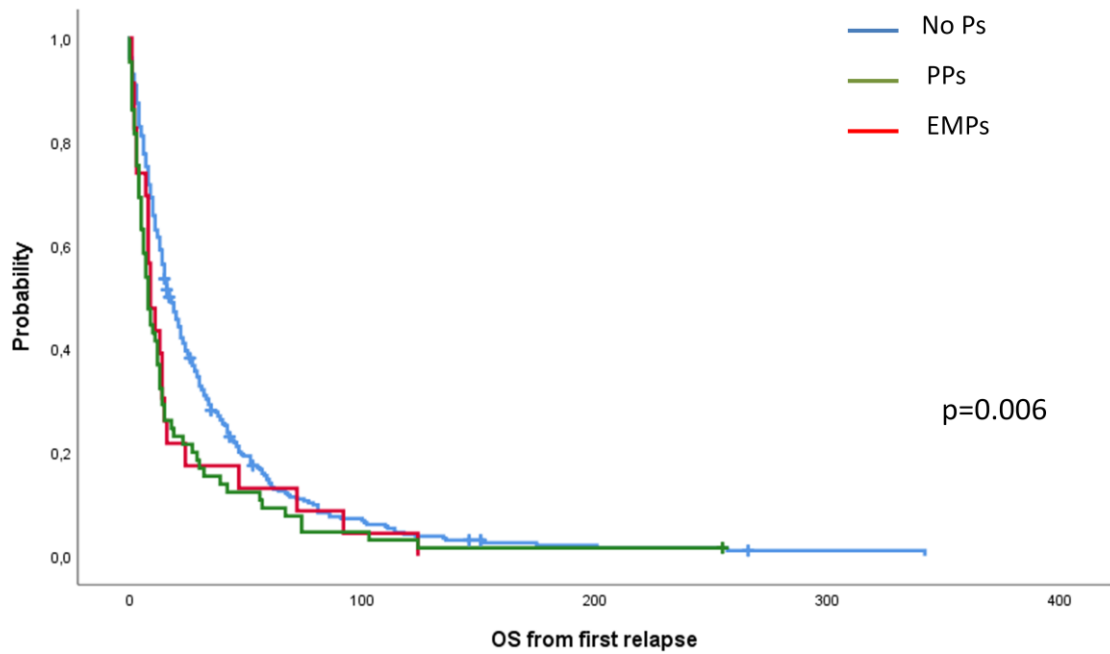


D

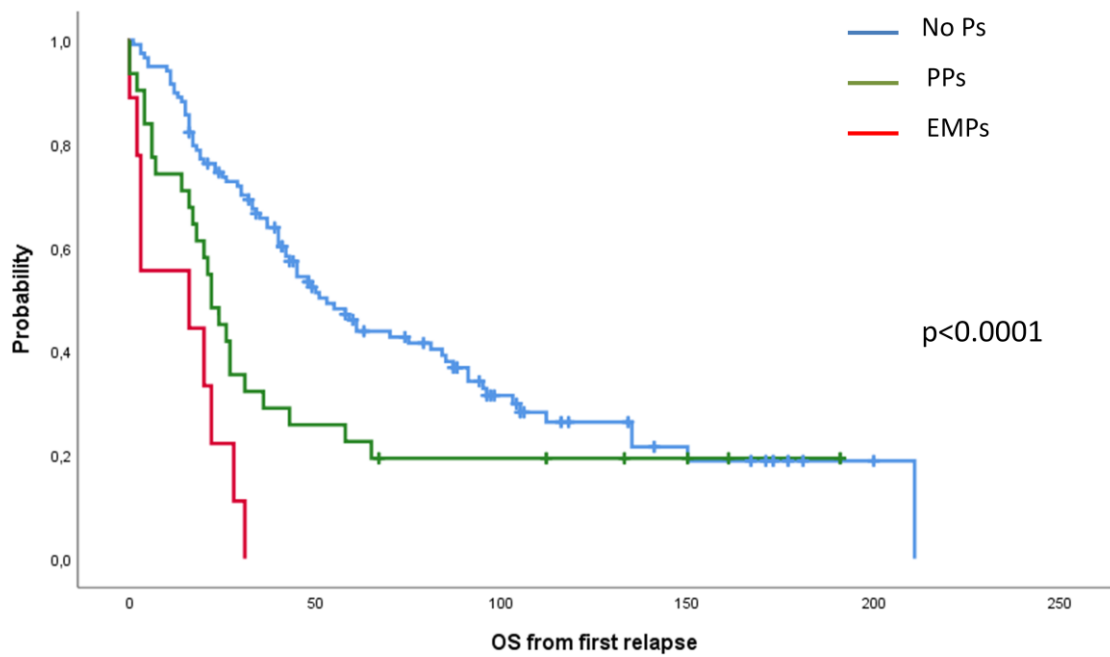


Supplementary figure 2: overall survival from first relapse according to salvage therapy a) conventional chemotherapy, b) PI-based, c) IMiD-based, d) PI+IMiD-based

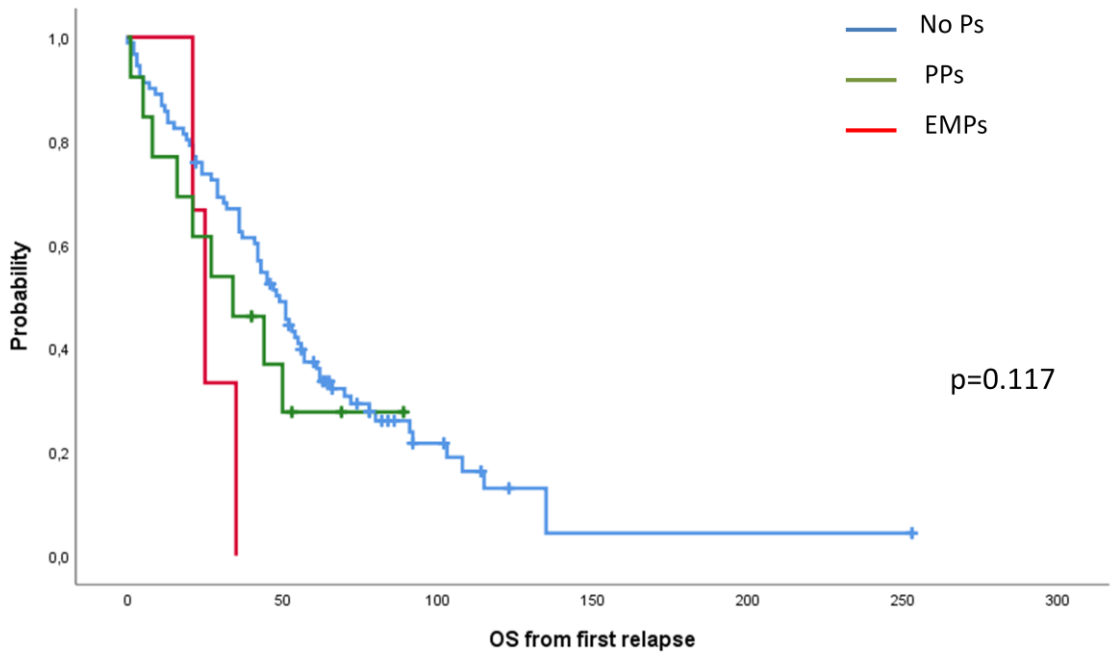
A



B



C



D

